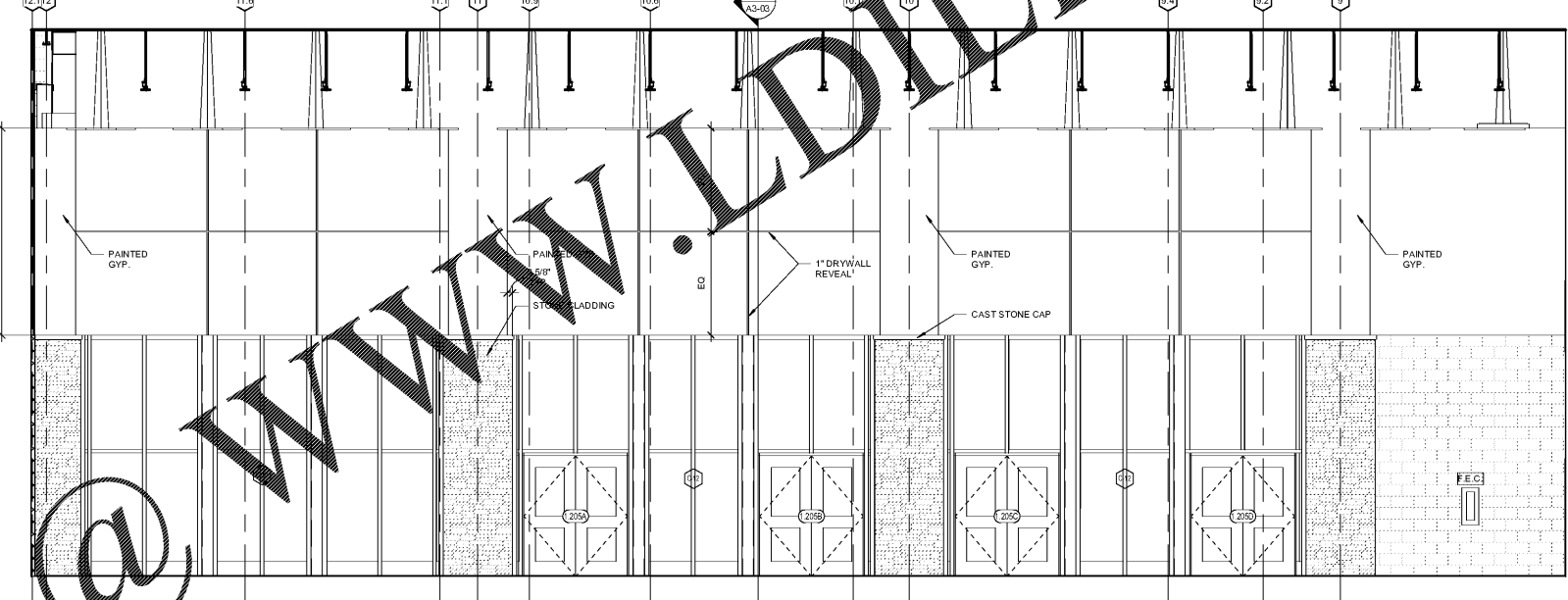
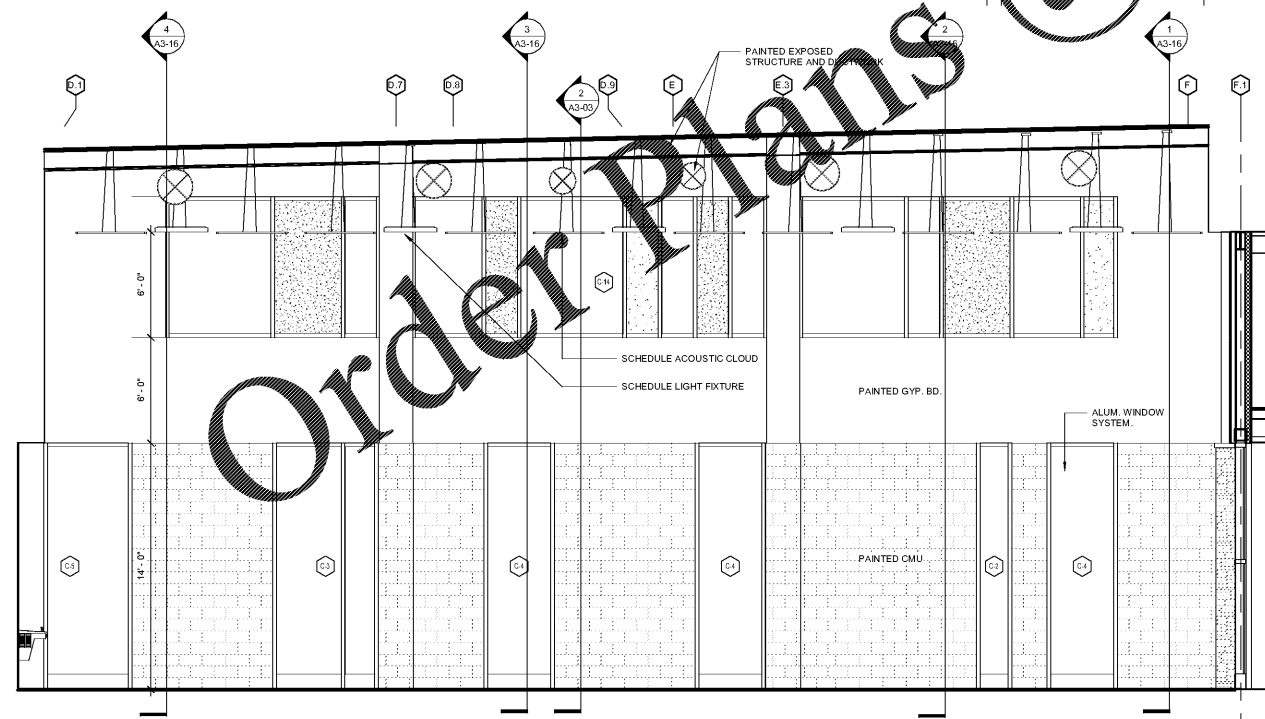


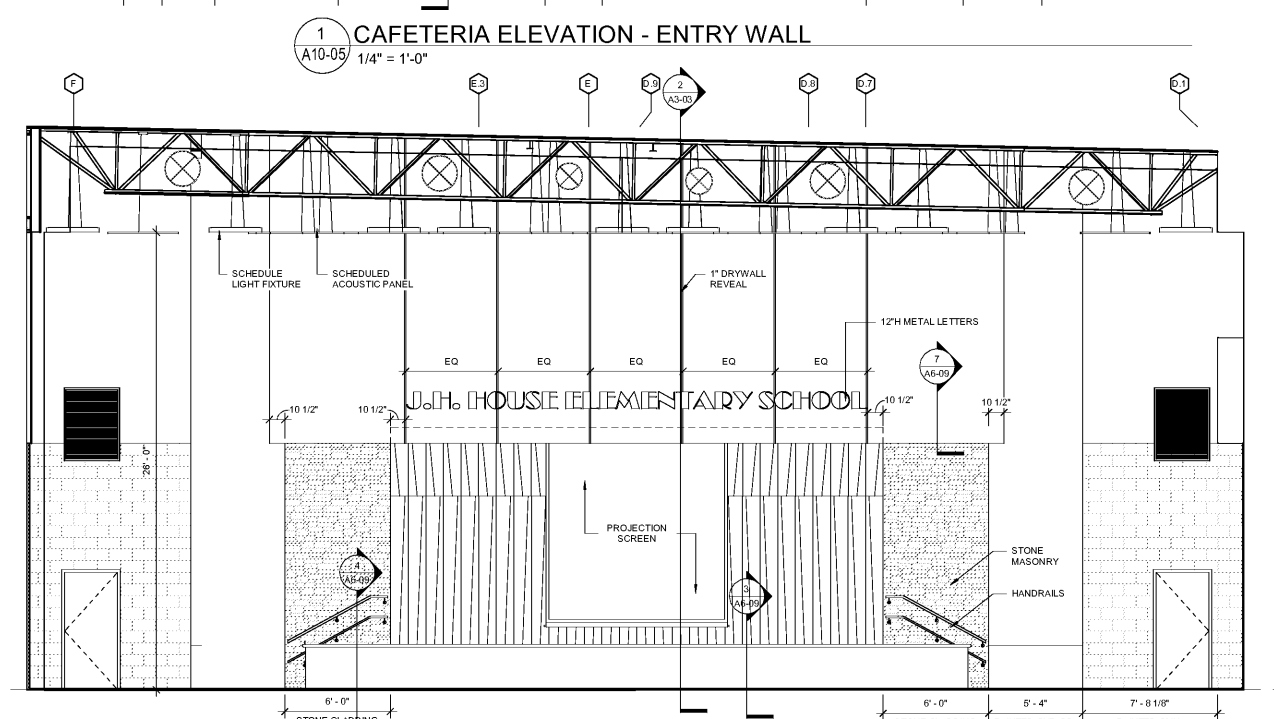
3 CAFETERIA ELEVATION - SERVING LINE
A10-05 1/4" = 1'-0"



1 CAFETERIA ELEVATION - ENTRY WALL
A10-05 1/4" = 1'-0"



4 CAFETERIA ELEVATION - EXT. WALL
A10-05 1/4" = 1'-0"



2 CAFETERIA ELEVATION - STAGE WALL
A10-05 1/4" = 1'-0"

WWW.LDILine.com

Order Plans

Smallwood, Reynolds, Stewart & Associates, Inc. Architects

One Piedmont Center, Suite 303 3565 Piedmont Road Atlanta, Georgia 30305

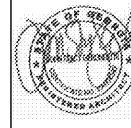
REV. NO.	DATE	REVISIONS / PRINTED	REMARKS
1	10/01/19	PROGRESS PRINT	
2	10/01/19	DESIGN CHECK SET	
3	10/01/19	ISSUED FOR BIDDING	
4	10/01/19	PERMIT / ISSUE	

INSTRUCTIONAL UNIT	AREA	COVERED AREAS (I.E. CANOPIES)	TOTAL
REGULAR CLASSROOMS	71,153 SF		
MUSIC	3,239 SF		
PHYSICAL EDUCATION	106,831 SF		
ART CENTER			
ART			
TOTAL	181,223 SF	5,188 SF	186,411 SF

PROJECT SUMMARY

PROJECT: J.H. HOUSE ELEMENTARY SCHOOL
 GRADES: PRE-K THROUGH 5TH
 P.T.E. #00
 G.O.D.E.# TO BE ASSIGNED

RCPS


 CITY OF DECATUR, GEORGIA
 DEPARTMENT OF COMMUNITY DEVELOPMENT
 100 W. HUNTER STREET, SUITE 200
 DECATUR, GA 30030

CAFETERIA INTERIOR ELEVATIONS

J.H. HOUSE ELEMENTARY SCHOOL

3100 Zingira Road NE, Conyers, GA 30012

DATE	10-01-2019
JOB NO.	218036.00
SHEET NO.	A10-05

ISSUED FOR CONSTRUCTION