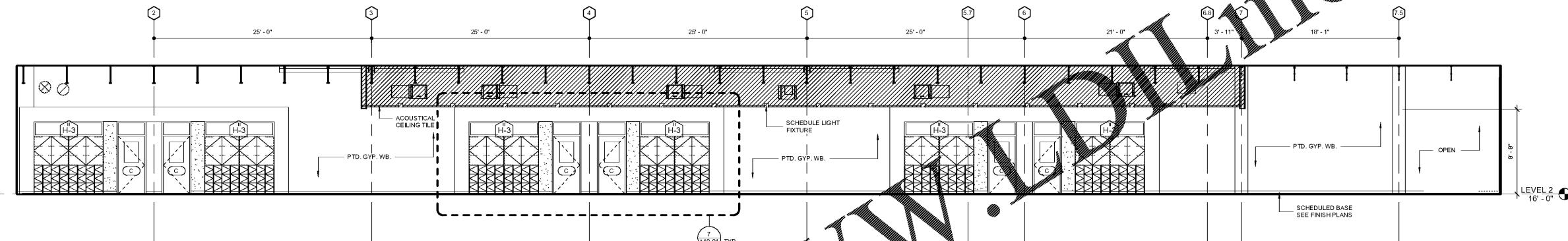
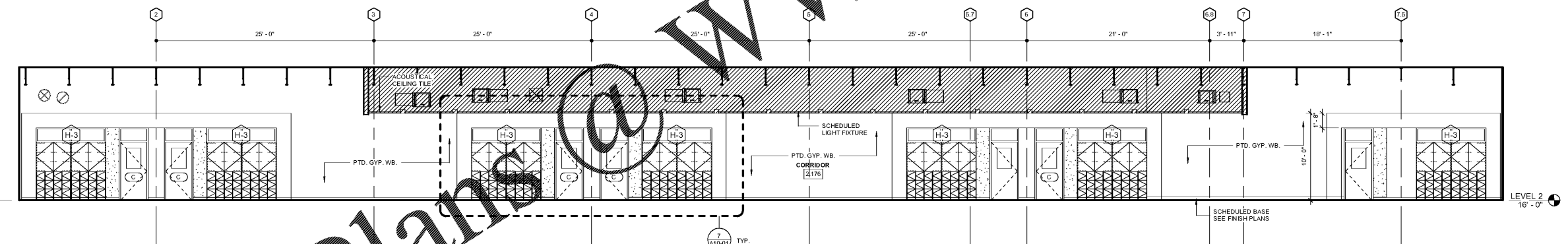


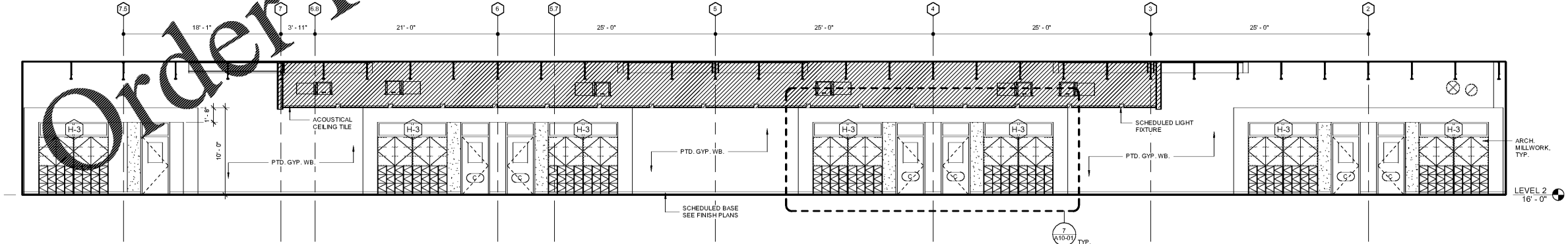
4 LEVEL 02C- CLASSROOM CORRIDOR- -SOUTH
A10-04 3/16" = 1'-0"



3 LEVEL 02B- CLASSROOM CORRIDOR- NORTH
A10-04 3/16" = 1'-0"



2 LEVEL 02C- CLASSROOM CORRIDOR NORTH
A10-04 3/16" = 1'-0"



1 LEVEL 02B- CLASSROOM CORRIDOR- SOUTH
A10-04 3/16" = 1'-0"

Order Plans @ WWW.DJLine.com

Smallwood, Reynolds, Stewart & Associates, Inc. Architects

One Piedmont Center, Suite 303 3565 Piedmont Road Atlanta, Georgia 30305

2ND FLOOR CORRIDOR ELEVATIONS

J.H. HOUSE ELEMENTARY SCHOOL
3100 Zingira Road NE, Conyers, GA 30012

REV. NO.	DATE	REMARKS
0001	10-01-2019	PROGRESS PRINT
0002	10-01-2019	DESIGN CHECK SET
0003	10-01-2019	ISSUED FOR BIDDING
0004	10-01-2019	PERMIT / ISSUE

INSTRUCTIONAL UNIT	REVISIONS / PRINTED
REGULAR CLASSROOMS	46
REGULAR FLEX AREAS	1
MUSIC	1
PHYSICAL EDUCATION	1
ART CENTER	1
ART	1
TOTAL	51

PROJECT SUMMARY	PROJECT AREA	PROJECT UNIT
J.H. HOUSE ELEMENTARY SCHOOL	71,153 SF	LEVEL 02
GRADE: PRE-K THROUGH 5TH	32,238 SF	LEVEL 02
P.T.E. # TO BE ASSIGNED	108,391 SF	TOTAL
G.O.D.E. # TO BE ASSIGNED	108,391 SF	TOTAL
	COVERED AREAS (IE CANOPIES)	
	5,188 SF	
	COVERED AREAS (BY 2)	
	2,255 SF	
	TOTAL	

DATE: 10-01-2019
JOB NO: 218036.00
SHEET NO: A10-04

ISSUED FOR CONSTRUCTION