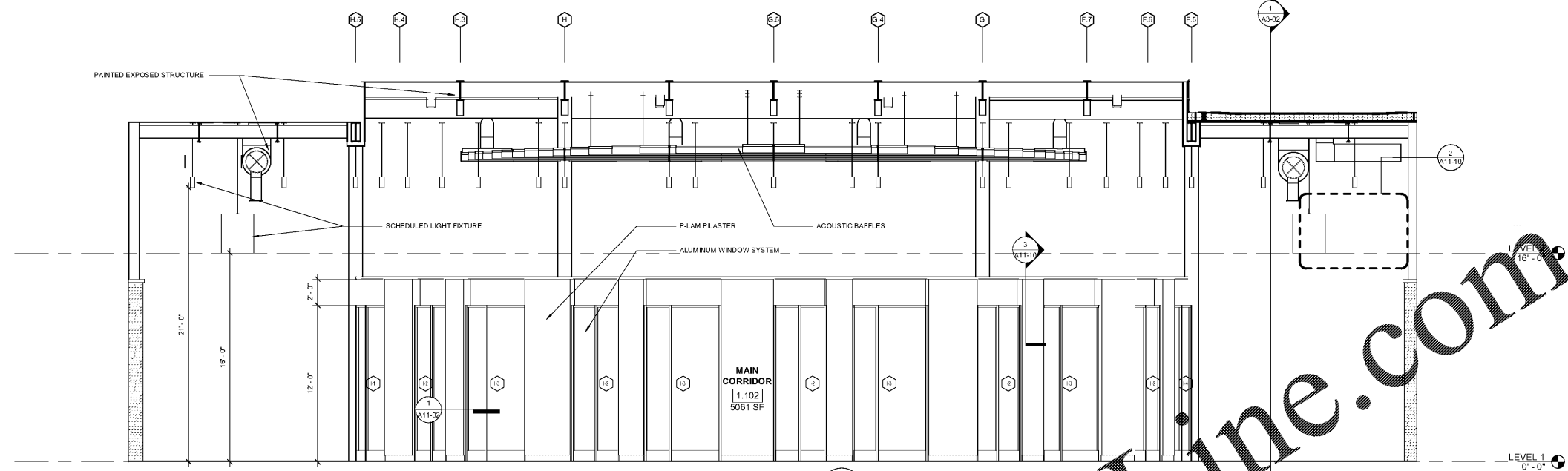
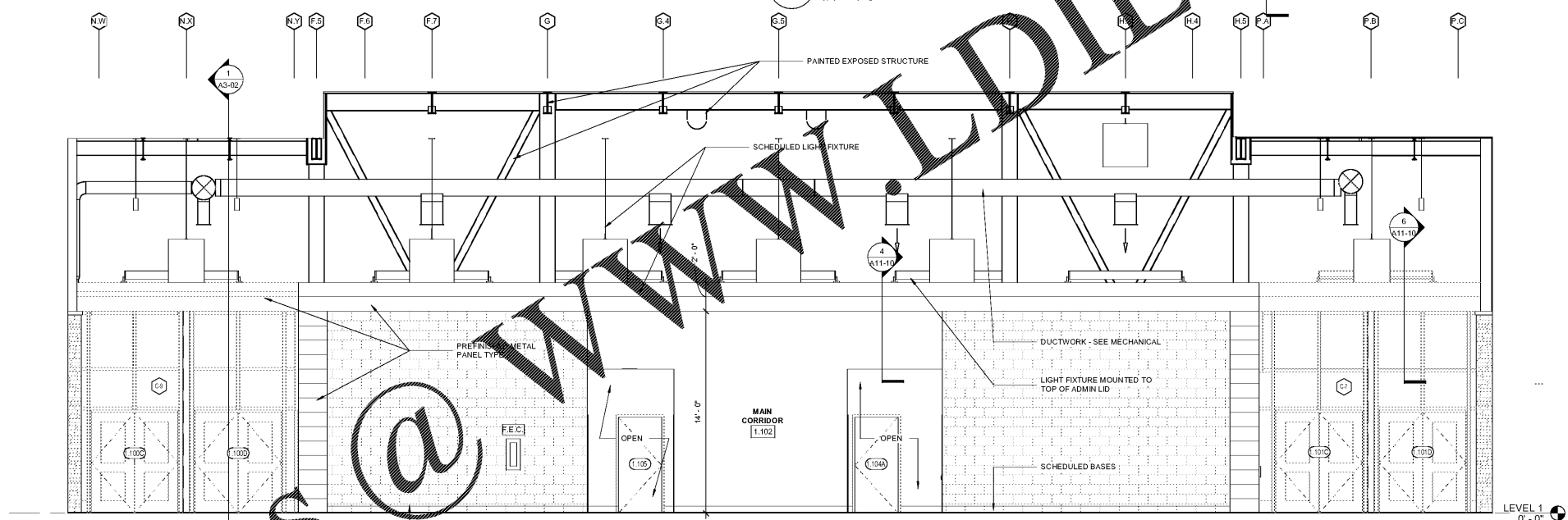


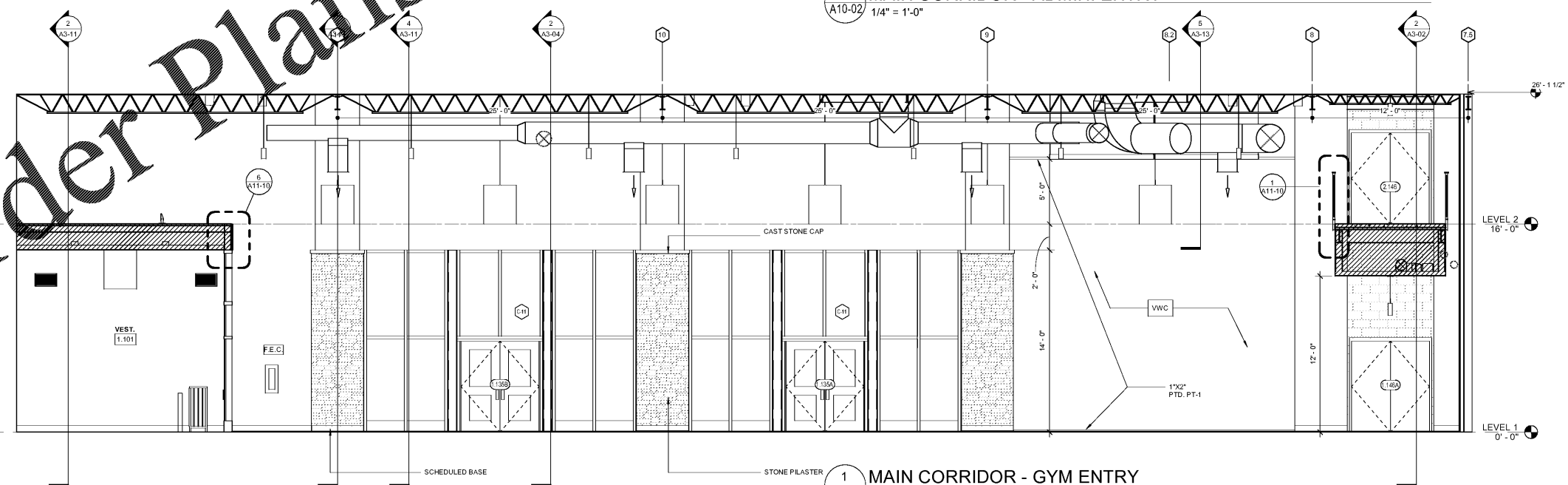
Order Plans @ WWW.LDLINE.COM



4 MAIN CORRIDOR - MEDIA CENTER SIDE
1/4" = 1'-0"



3 MAIN CORRIDOR - ADMIN. ENTRY
1/4" = 1'-0"



1 MAIN CORRIDOR - GYM ENTRY
1/4" = 1'-0"

Smallwood, Reynolds, Stewart & Associates, Inc. Architects
 One Piedmont Center, Suite 303 3565 Piedmont Road Atlanta, Georgia 30305

MAIN CORRIDOR ELEVATIONS
J.H. HOUSE ELEMENTARY SCHOOL
 3100 Zingira Road NE, Conyers, GA 30012

DATE: 10-01-2019
 JOB NO.: 218036.00
 SHEET NO.: A10-02

ISSUED FOR CONSTRUCTION

REV. NO.	DATE	REMARKS
1	08/13/19	PROGRESS PRINT
2	09/19/19	DESIGN CHECK SET
3	10/01/19	ISSUED FOR BID / PERMIT / ISSUE

INSTRUCTIONAL UNIT	71,193 SF	71,193 SF
REGULAR CLASSROOMS	32,239 SF	32,239 SF
MUSIC	10,637 SF	10,637 SF
PHYSICAL EDUCATION	5,186 SF	5,186 SF
ART CENTER	5,186 SF	5,186 SF
ART	5,186 SF	5,186 SF
TOTAL	71,193 SF	71,193 SF

RCPS
 CITY OF CONYERS
 CONYERS, GEORGIA