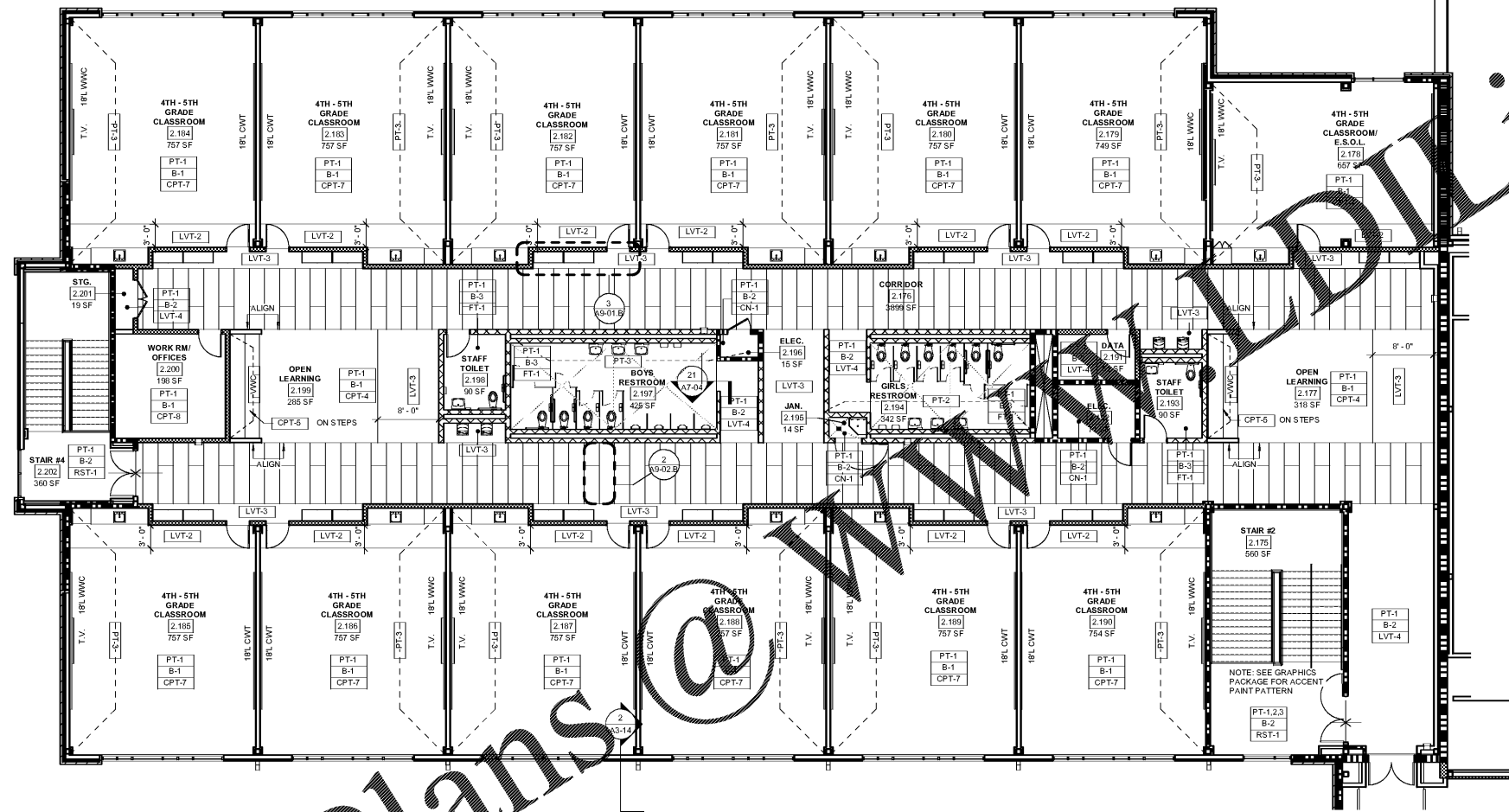
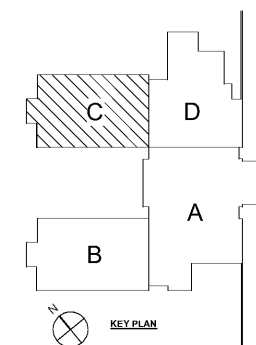
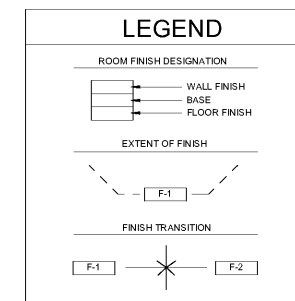


Order Plans @ [www.ArchitectsOnline.com](http://www.ArchitectsOnline.com)



1 LEVEL 02 - PART C FINISH PLAN  
A9-02.C 1/8" = 1'-0"

- GENERAL NOTES**
1. PROVIDE CORNER GUARDS AT ALL OUTSIDE CORNERS OF GYP. BD. PARTITIONS
  2. PROVIDE 4" H RUBBER BASE AT BASE CABINETS.
  3. ALL COUNTER TOPS TO BE SS-1
  4. ALL WINDOWS TO RECEIVE SS-2 SILL
  5. EXPOSED CEILINGS TO BE PT-6 U.N.O.
  6. GYP. BD. CEILINGS TO BE PT-6 U.N.O.
  7. WALL PAINT TO BE PT-1, U.N.O.
  8. DOOR FRAMES & RAILINGS TO BE PT-5
  9. EXPOSED ROUND HSS STEEL COLUMNS AT MAIN CORRIDOR TO BE PT-2
  10. EXPOSED 3" STRUCTURAL BEAMS AT MAIN CORRIDOR TO BE PT-6
  11. EXPOSED DECKING AT MAIN CORRIDOR TO BE PT-7



REV. NO.	DATE	REMARKS
00/01		PROGRESS PRINT
00/02		ISSUE FOR BID / PERMIT / CLOSE

REVISIONS / PRINTED	45	81
INSTRUCTIONAL UNITS		
REGULAR CLASSROOMS	71,185 SF	
MUSIC	3,238 SF	
PHYSICAL EDUCATION	106,531 SF	
PHYSICAL EDUCATION CENTER	5,188 SF	
ART	2,258 SF	
TOTAL	188,390 SF	

PROJECT SUMMARY	PROJECT SUMMARY
REGULAR CLASSROOMS	71,185 SF
MUSIC	3,238 SF
PHYSICAL EDUCATION	106,531 SF
PHYSICAL EDUCATION CENTER	5,188 SF
ART	2,258 SF
TOTAL	188,390 SF



SMALLWOOD, REYNOLDS, STEWART & ASSOCIATES, INC.  
REGISTERED PROFESSIONAL ARCHITECTS  
1000 W. BERRY STREET, SUITE 200  
ATLANTA, GEORGIA 30303

<b>LEVEL 02- PART C FINISH PLAN</b>	
J.H. HOUSE ELEMENTARY SCHOOL 3100 Zingira Road NE, Conyers, GA 30012	
DATE	10-01-2019
JOB NO.	218036.00
SHEET NO.	A9-02.C

ISSUED FOR CONSTRUCTION

Smallwood, Reynolds, Stewart & Associates, Inc. Architects | One Piedmont Center, Suite 303 3565 Piedmont Road Atlanta, Georgia 30305