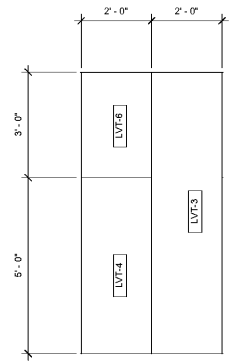
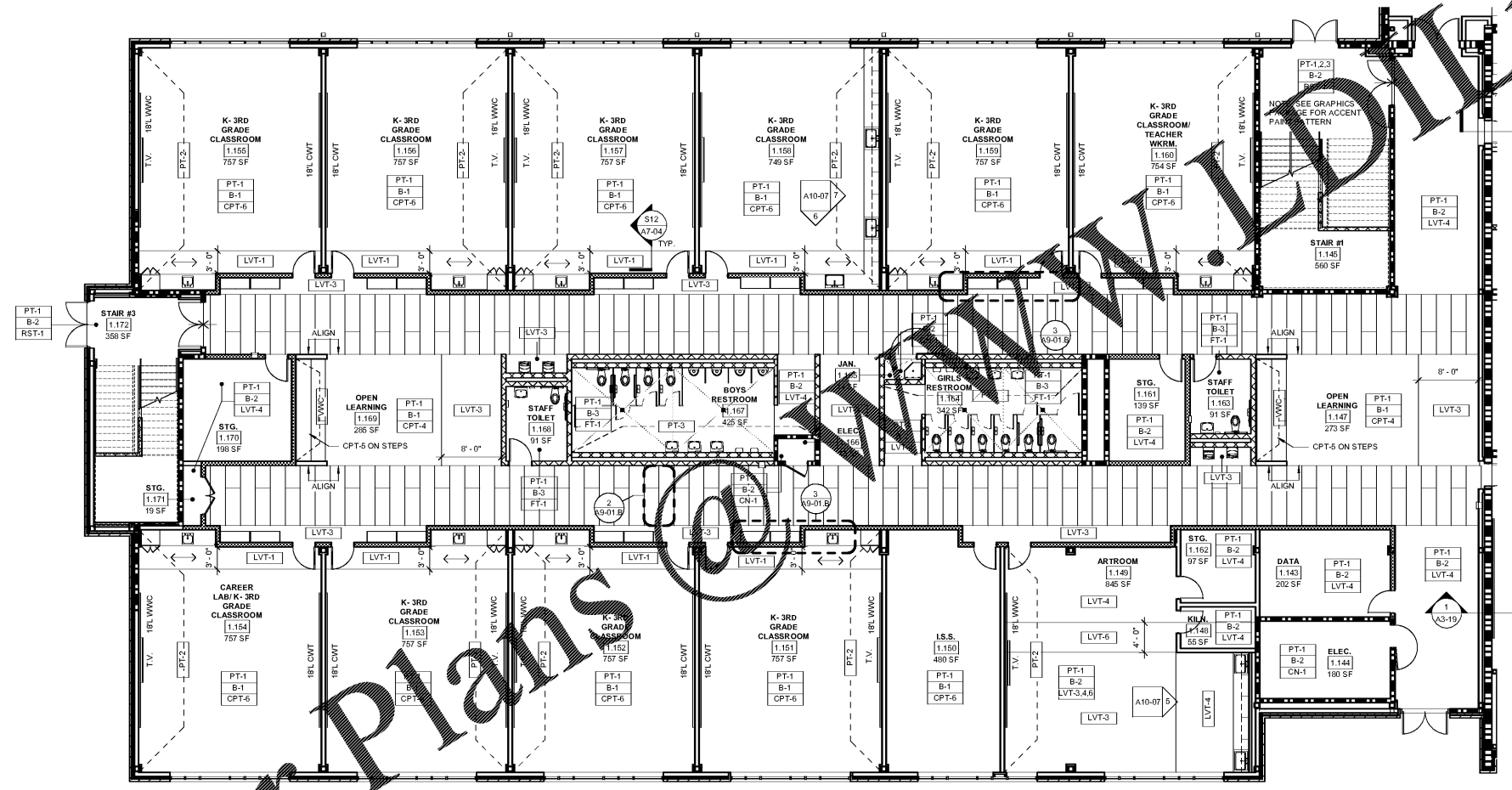
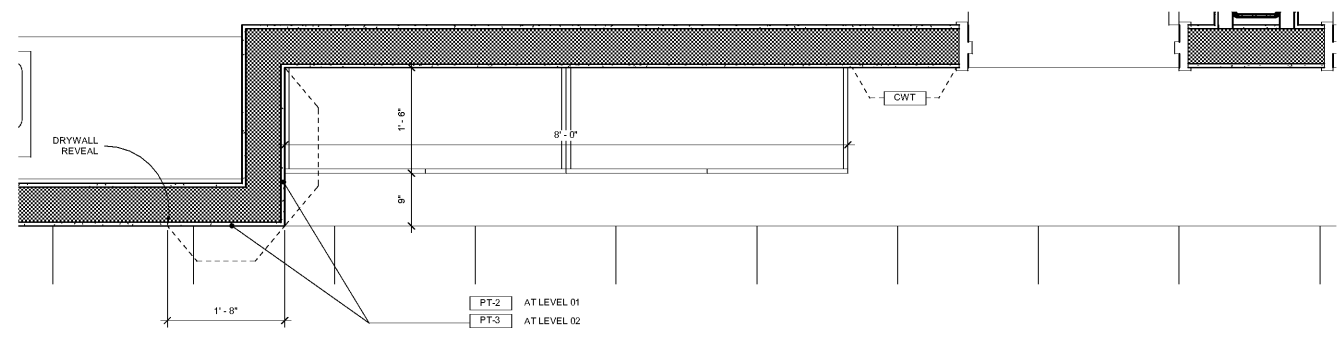


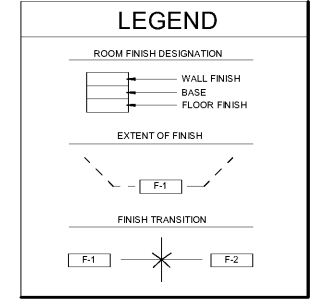
2 TYPICAL FLOOR PATTERN (LEVEL 01)  
A9-01.B 1/2" = 1'-0"



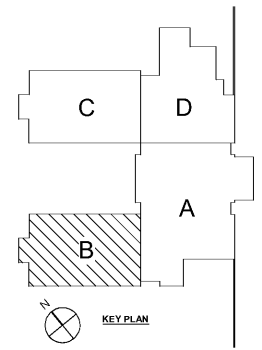
3 PART B FINISH PLAN -ACCENT COLOR  
A9-01.B 1" = 1'-0"



- GENERAL NOTES**
1. PROVIDE CORNER GUARDS AT ALL OUTSIDE CORNERS OF GYP. BD. PARTITIONS
  2. PROVIDE #4 RUBBER BASE AT BASE CABINETS.
  3. ALL COUNTERTOPS TO BE SS-1
  4. ALL WINDOWS TO RECEIVE SS-2 SILL
  5. EXPOSED CEILINGS TO BE PT-4 U.N.O.
  6. GYP. BD. CEILINGS TO BE PT-6 U.N.O.
  7. WALL PAINT TO BE PT-1 U.N.O.
  8. DOOR FRAMES & RAILINGS TO BE PT-6
  9. EXPOSED ROUND HSS STEEL COLUMNS AT MAIN CORRIDOR TO BE PT-2
  10. EXPOSED STRUCTURAL BEAMS AT MAIN CORRIDOR TO BE PT-5
  11. EXPOSED DECKING AT MAIN CORRIDOR TO BE PT-7



1 LEVEL 01 - PART B FINISH PLAN  
A9-01.B 1/8" = 1'-0"



REV. NO.	DATE	REMARKS
46	10/01/19	PROGRESS PRINT
45	09/01/19	ISSUED FOR BID / PERMIT / GIVE

INSTRUCTIONAL UNITS	REGULAR CLASSROOMS	REGULAR FLEX-AREAS	MUSIC	PHYSICAL EDUCATION	ART CENTER	ART	TOTAL
46	71,152 SF	32,238 SF	106,631 SF	5,188 SF	5,188 SF	2,258 SF	112,655 SF

PROJECT SUMMARY	PROJECT NAME	PROJECT LOCATION	PROJECT OWNER	PROJECT ARCHITECT
1	J.H. HOUSE ELEMENTARY SCHOOL	3100 Zingira Road NE, Conyers, GA 30012	STEWART & ASSOCIATES, INC.	SMALLWOOD, REYNOLDS, STEWART & ASSOCIATES, INC.



STEWART & ASSOCIATES, INC.  
1000 W. BROADWAY, SUITE 200  
CONYERS, GA 30012  
PH: 770.942.1111  
WWW.STEWAARTARCHITECTS.COM

SMALLWOOD, REYNOLDS, STEWART & ASSOCIATES, INC.  
1000 W. BROADWAY, SUITE 200  
CONYERS, GA 30012  
PH: 770.942.1111  
WWW.SMALLWOODREYNOLDSSTEWARTARCHITECTS.COM

**LEVEL 01 - PART B FINISH PLAN**  
J.H. HOUSE ELEMENTARY SCHOOL  
3100 Zingira Road NE, Conyers, GA 30012

DATE: 10-01-2019  
JOB NO.: 218036.00  
SHEET NO.: A9-01.B

ISSUED FOR CONSTRUCTION

Order Plans @ [www.drawingonline.com](http://www.drawingonline.com)

Smallwood, Reynolds, Stewart & Associates, Inc. Architects One Piedmont Center, Suite 303 3565 Piedmont Road Atlanta, Georgia 30305