

REFLECTED CEILING PLAN LEGEND

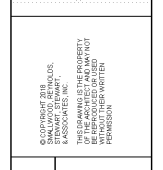
SYM.	DESCRIPTION	CEILING TYPE LEGEND	
[Symbol]	2X4 RECESSED LIGHT FIXTURE	A	2' X 2' SUSPENDED ACOUSTIC CEILING
[Symbol]	LINEAR LIGHT FIXTURE	B	2' X 2' SUSPENDED ACOUSTIC CEILING (WATER RESISTIVE)
[Symbol]	DOWNLIGHT	C	2' X 2' STAINLESS STEEL PANELS
[Symbol]	LED DOWNLIGHT	D	EXPOSED STRUCTURE (SEE NOTES ABOVE)
[Symbol]	SUPPLY	E	EIFS SOFFIT
[Symbol]	RETURN	F	SUSPENDED GYPSUM BOARD
[Symbol]	ACOUSTICAL PANEL	F1	1 HOUR RATED GYPSUM BOARD
[Symbol]	SKYDOME LIGHT FIXTURE	G	SUSPENDED LINEAR METAL (FAUX W.D. FINISH) CEILING
[Symbol]	HORIZONTAL BLINDS	H	SUSPENDED ACOUSTIC BAFFLE CEILING
[Symbol]	CEILING TAG	J	SUSPENDED ACOUSTIC BAFFLE CEILING
[Symbol]	CEILING HEIGHT	K	TO ABOVE OR BELOW
[Symbol]	GWS - CEILING FINISH		
[Symbol]	CEILING TYPE		

- ### REFLECTED CEILING PLAN GENERAL NOTES
- ALL MECHANICAL, ELECTRICAL, PLUMBING AND MISCELLANEOUS CONDUIT ITEMS TO BE LOCATED TIGHT TO STRUCTURAL ABOVE. FOLLOW PROFILE OF BEAMS WHERE APPLICABLE.
 - PROVIDE METAL INVERTS AT ALL EXPOSED AREAS IN PUBLIC SPACES.
 - ALL VESSEL SYSTEMS INCLUDING STRUCTURAL AND UTILITIES TO BE PAINTED (TBD).
 - PROVIDE FLAME MOUNT FIRE PROTECTION DEVICES AT ALL GYPSUM BOARD AREAS.
 - ANY REFUSE LOCATED AT GYP. BOARD SOFFITS / CEILINGS TO BE LINEAR TYPE DEVICE AND MOUNT FLUSH WITH ADJACENT ELEMENT.

REV. NO.	DATE	REMARKS
00010	08/01/19	PROGRESS PRINT
00019	05/06/19	ISSUE FOR BID / PERMIT / GIVE

INSTRUCTIONAL UNIT	REGULAR CLASSROOMS	REGULAR FLEX-AREAS	MUSIC	PHYSICAL EDUCATION	ART CENTER	TOTAL
	46					46

PROJECT SUMMARY	PROJECT AREA	LEVEL	COVERED AREA (I.E. CANOPIES)	COVERED AREA (I-BY 2)	TOTAL
J.H. HOUSE ELEMENTARY SCHOOL	71,152 SF	02	3,232 SF	5,188 SF	8,420 SF
GRADE: PRE-K THRU 5TH	3,232 SF				3,232 SF
P.T.E. #00	108,831 SF				108,831 SF
G.O.D.E.# TO BE ASSIGNED					



REFLECTED CEILING PLAN - LEVEL 02 PART C

J.H. HOUSE ELEMENTARY SCHOOL
3100 Zingira Road NE, Conyers, GA 30012

DATE: 10-01-2019
JOB NO: 218036.00
SHEET NO: A8-02C

ISSUED FOR CONSTRUCTION

1 REFLECTED CEILING PLAN - LEVEL 02 PART C
A8-02C 1/8" = 1'-0"

