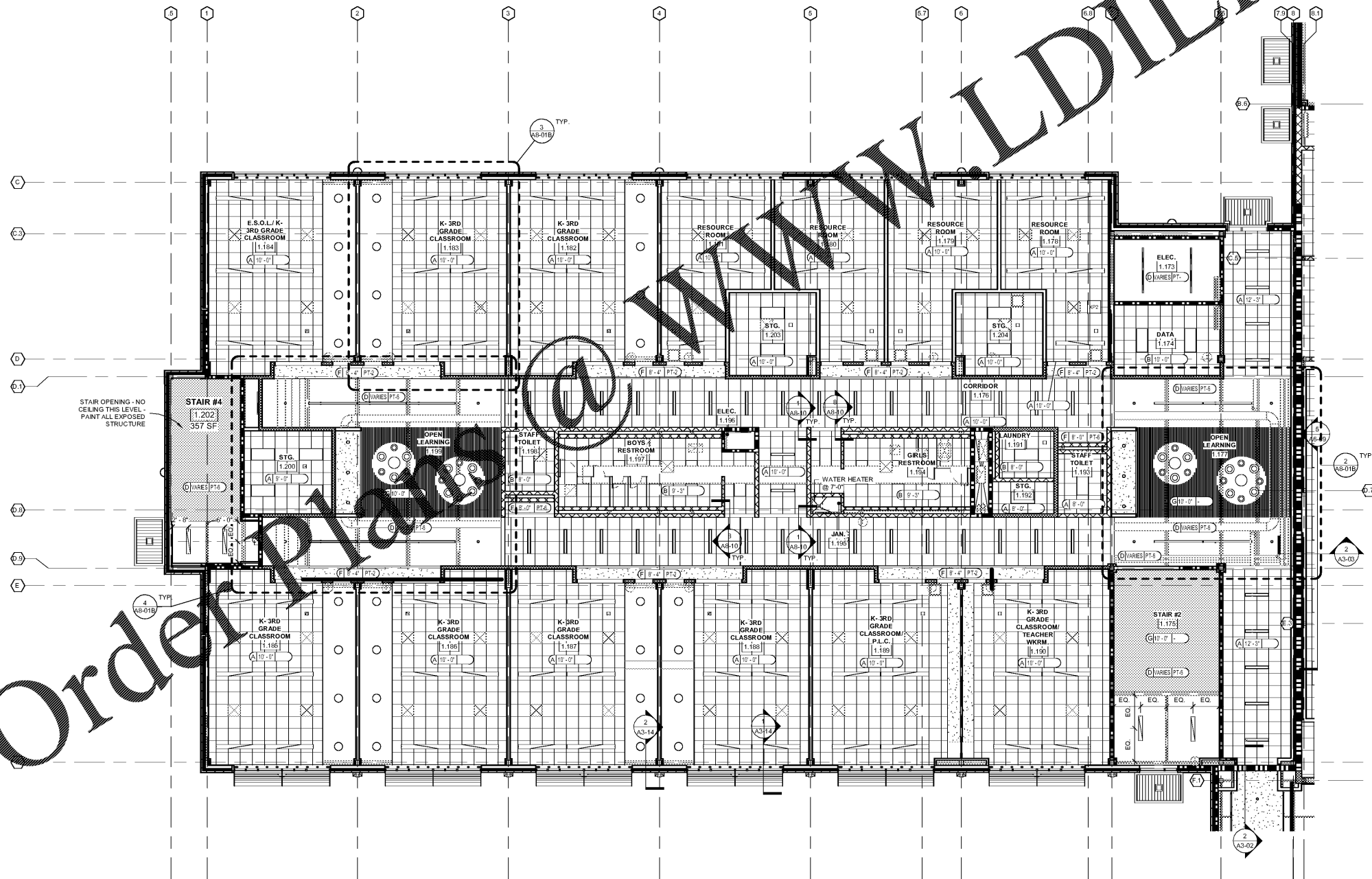


Order Plans



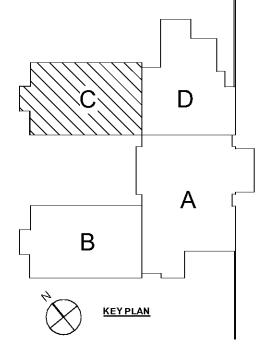
REFLECTED CEILING PLAN LEGEND

SYM.	DESCRIPTION	CEILING TYPE LEGEND
[Symbol]	2X4 RECESSED LIGHT FIXTURE	A 2' X 2' SUSPENDED ACOUSTIC CEILING
[Symbol]	LINEAR LIGHT FIXTURE	B 2' X 2' SUSPENDED ACOUSTIC CEILING (WATER RESISTIVE)
[Symbol]	DOWNLIGHT	C 2' X 2' STAINLESS STEEL PANELS
[Symbol]	LED DOWNLIGHT	D EXPOSED STRUCTURE (SEE NOTES ABOVE)
[Symbol]	SUPPLY	E EIFS SOFFIT
[Symbol]	RETURN	F SUSPENDED GYPSUM BOARD
[Symbol]	ACOUSTICAL PANEL	FI 1 HOUR RATED GYPSUM BOARD
[Symbol]	SKYDOME LIGHT FIXTURE	G SUSPENDED LINEAR MET. (FAUX WD. FINISH)
[Symbol]	HORIZONTAL BLINDS	H SUSPENDED ACOUSTIC BAFFLE CEILING
[Symbol]	CEILING TAG	J CLOUDING

CEILING TAG: 8'-0" GWB CEILING HEIGHT, CEILING FINISH, CEILING TYPE (OPEN TO ABOVE OR BELOW)

- ### REFLECTED CEILING PLAN GENERAL NOTES
- ALL MECHANICAL, ELECTRICAL, PLUMBING AND MISCELLANEOUS CONDUIT ITEMS TO BE LOCATED TIGHT TO STRUCTURE SLAB ABOVE. FOLLOW PROFILE OF BEAMS WHERE APPLICABLE.
 - PROVIDE ALL INSULATED DUCT AT ALL EXPOSED AREAS IN PUBLIC SPACES.
 - VISIBLE THROUGH STRUCTURAL AND UTILITIES TO BE PAINTED (TBD).
 - PROVIDE FLUSH MOUNT FIRE PROTECTION DEVICES AT ALL GYPSUM BOARD AREAS.
 - ANY DEVICES LOCATED AT GYP. BOARD SOFFITS / CEILINGS TO BE LINEAR TYPE DEVICE AND MOUNTED FLUSH WITH ADJACENT ELEMENT.

1 REFLECTED CEILING PLAN-LEVEL 01 PART C
A8-01C 1/8" = 1'-0"



Smallwood, Reynolds, Stewart & Associates, Inc. Architects

One Piedmont Center, Suite 303 3565 Piedmont Road Atlanta, Georgia 30305

REVISIONS / PRINTED

REV. NO.	DATE	REMARKS
1	10/01/19	PROGRESS PRINT
2	10/01/19	ISSUED FOR BID / PERMIT / CLOSE

INSTRUCTIONAL UNITS

REGULAR CLASSROOMS	71,153 SF	46
REGULAR CLASSROOMS	32,239 SF	4
MUSIC	106,631 SF	1
PHYSICAL EDUCATION		1
ART CENTER		1
ART	5,186 SF	1
TOTAL	215,209 SF	54

PROJECT SUMMARY

REGULAR CLASSROOMS: 71,153 SF
 GRADE: PRE-K THROUGH 5TH
 P.T.E. ROOM: 5,186 SF
 G.O.D.E.#: TO BE ASSIGNED

COVERED AREAS (I.E. CANOPIES)
 COVERED AREAS: 5,186 SF
 TOTAL: 215,209 SF

RCPS

STATE OF GEORGIA

REGISTERED PROFESSIONAL ARCHITECT

SMALLWOOD, REYNOLDS, STEWART & ASSOCIATES, INC.
 3100 ZINGIRA ROAD NE, CONYERS, GA 30012

REFLECTED CEILING PLAN-LEVEL 01 PART C

J.H. HOUSE ELEMENTARY SCHOOL
 3100 Zingira Road NE, Conyers, GA 30012

DATE: 10-01-2019
 JOB NO.: 218036.00
 SHEET NO.: A8-01C

ISSUED FOR CONSTRUCTION