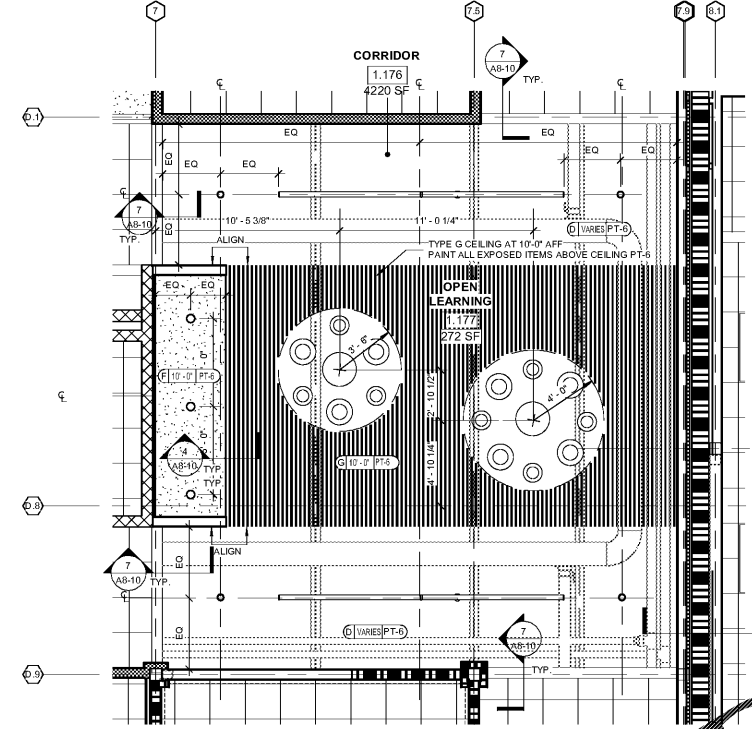


4 TYP. OPEN LEARNING AREA 2  
A8-01B 1/4" = 1'-0"

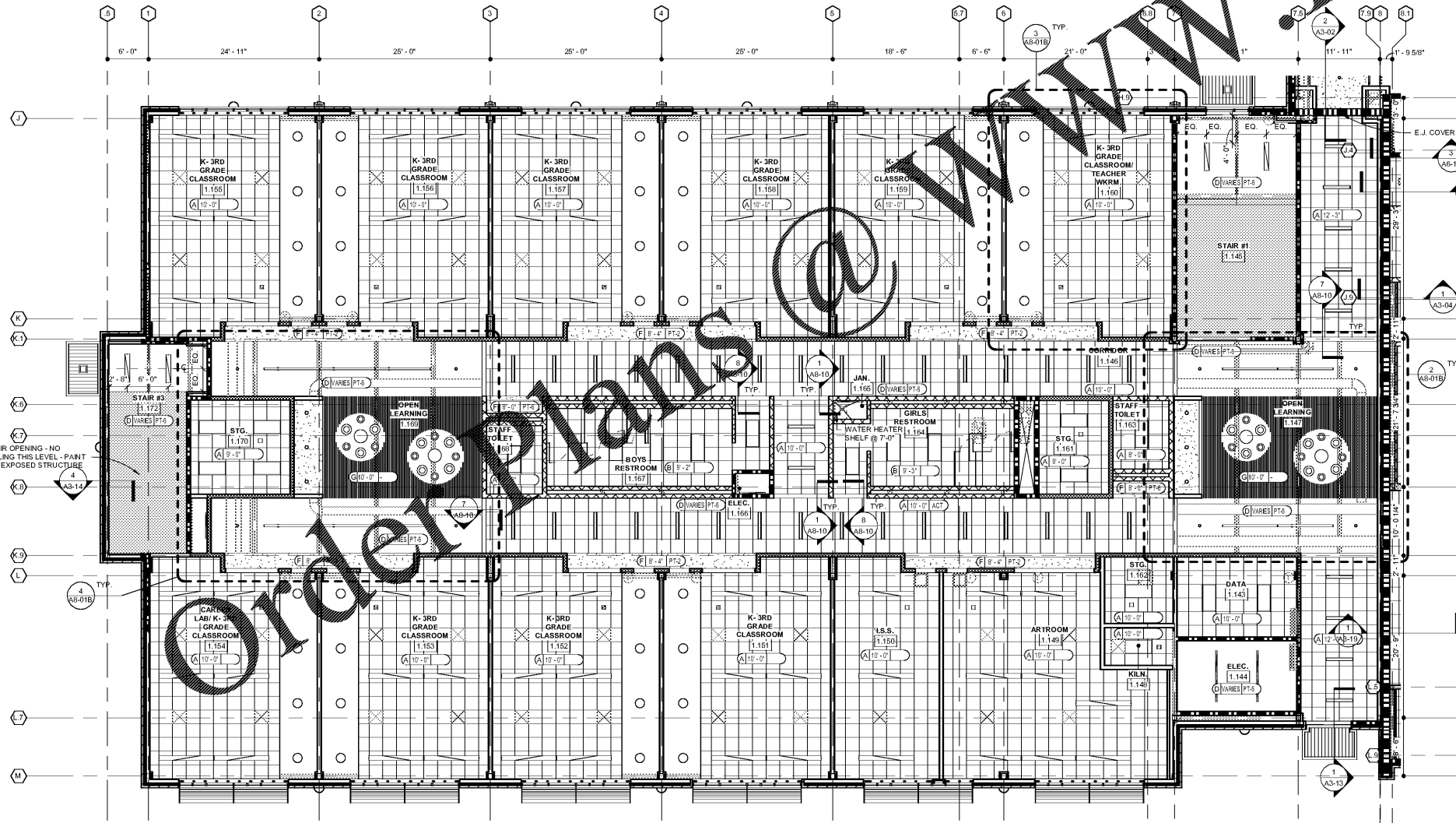


2 TYP. OPEN LEARNING AREA 1  
A8-01B 1/4" = 1'-0"

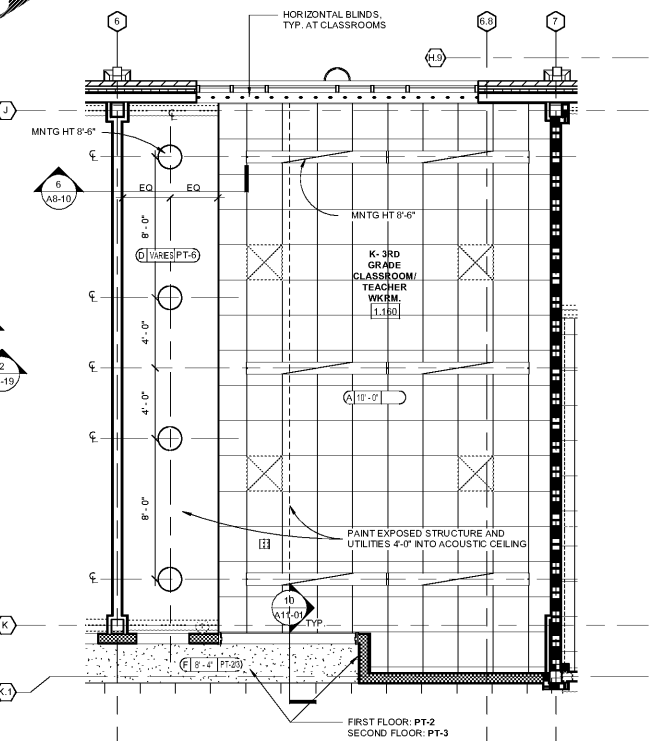
### REFLECTED CEILING PLAN LEGEND

SYM.	DESCRIPTION	CEILING TYPE LEGEND
[Symbol]	2X4 RECESSED LIGHT FIXTURE	A 2' X 2' SUSPENDED ACOUSTIC CEILING
[Symbol]	LINEAR LIGHT FIXTURE	B 2' X 2' SUSPENDED ACOUSTIC CEILING (WATER RESISTIVE)
[Symbol]	DOWNLIGHT	C 2' X 2' STAINLESS STEEL PANELS
[Symbol]	LED DOWNLIGHT	D EXPOSED STRUCTURE (SEE NOTES ABOVE)
[Symbol]	SUPPLY	E EIFS SOFFIT
[Symbol]	RETURN	F SUSPENDED GYPSUM BOARD
[Symbol]	ACOUSTICAL PANEL	F1 1 HOUR RATED GYPSUM BOARD
[Symbol]	SKYDOME LIGHT FIXTURE	G SUSPENDED LINEAR LIGHT (FALX W.D. FINISH)
[Symbol]	HORIZONTAL BLINDS	H SUSPENDED ACOUSTIC Baffle CEILING
[Symbol]	CEILING TAG	J SUSPENDED ACOUSTIC CLOUD CEILING
[Symbol]	CEILING HEIGHT	K TO ABOVE OR BELOW
[Symbol]	CEILING FINISH	
[Symbol]	CEILING TYPE	

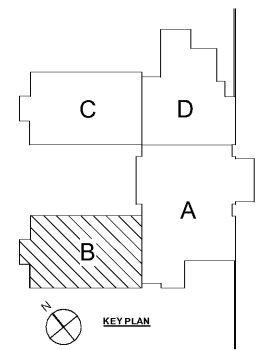
- ### REFLECTED CEILING PLAN GENERAL NOTES
- ALL MECHANICAL, ELECTRICAL, PLUMBING AND MISCELLANEOUS CONDUIT ITEMS TO BE LOCATED TIGHT TO STRUCTURE OR LAB ABOVE. FOLLOW PROFILE OF BEAMS WHERE APPLICABLE.
  - PROVIDE INSULATION TO ALL EXPOSED AREAS IN PUBLIC SPACES.
  - ALL MECHANICAL ITEMS, PLUMBING STRUCTURAL AND UTILITIES TO BE PAINTED (TBD).
  - PROVIDE FRESH AIR FIRE PROTECTION DEVICES AT ALL GYPSUM BOARD AREAS.
  - IF DIFF. LOCATED AT GYP. BOARD SOFFITS / CEILING TO BE LINEAR TYPE DEVICE AND PAINTED FINISH WITH ADJACENT ELEMENT.



1 REFLECTED CEILING PLAN-LEVEL 01 PART B  
A8-01B 1/8" = 1'-0"



3 TYPICAL CLASSROOM RCP  
A8-01B 1/4" = 1'-0"



REV. NO.	DATE	REMARKS
00019	08/10/19	PROGRESS PRINT
00018	05/08/19	ISSUE FOR BID / PERMIT / CLOSE

INSTRUCTIONAL UNIT	REGULAR CLASSROOMS	REGULAR FLEX AREAS	MUSIC	PHYSICAL EDUCATION	ART CENTER	TOTAL
46	71,153 SF	3,223 SF	106,831 SF	COVERED AREAS (IE CANOPIES)	5,188 SF	182,395 SF
				COVERED AREAS (BY 2)		182,395 SF

PROJECT SUMMARY	PROJECT NAME	PROJECT LOCATION	PROJECT NUMBER
RCPS	J.H. HOUSE ELEMENTARY SCHOOL	3100 Zingira Road NE, Conyers, GA 30012	218036.00



DATE	10-01-2019
JOB NO.	218036.00
SHEET NO.	A8-01B

Smallwood, Reynolds, Stewart & Associates, Inc. Architects  
 One Piedmont Center, Suite 303 3565 Piedmont Road Atlanta, Georgia 30305  
 REFLECTED CEILING PLAN-LEVEL 01 PART B  
 J.H. HOUSE ELEMENTARY SCHOOL  
 3100 Zingira Road NE, Conyers, GA 30012  
 ISSUED FOR CONSTRUCTION