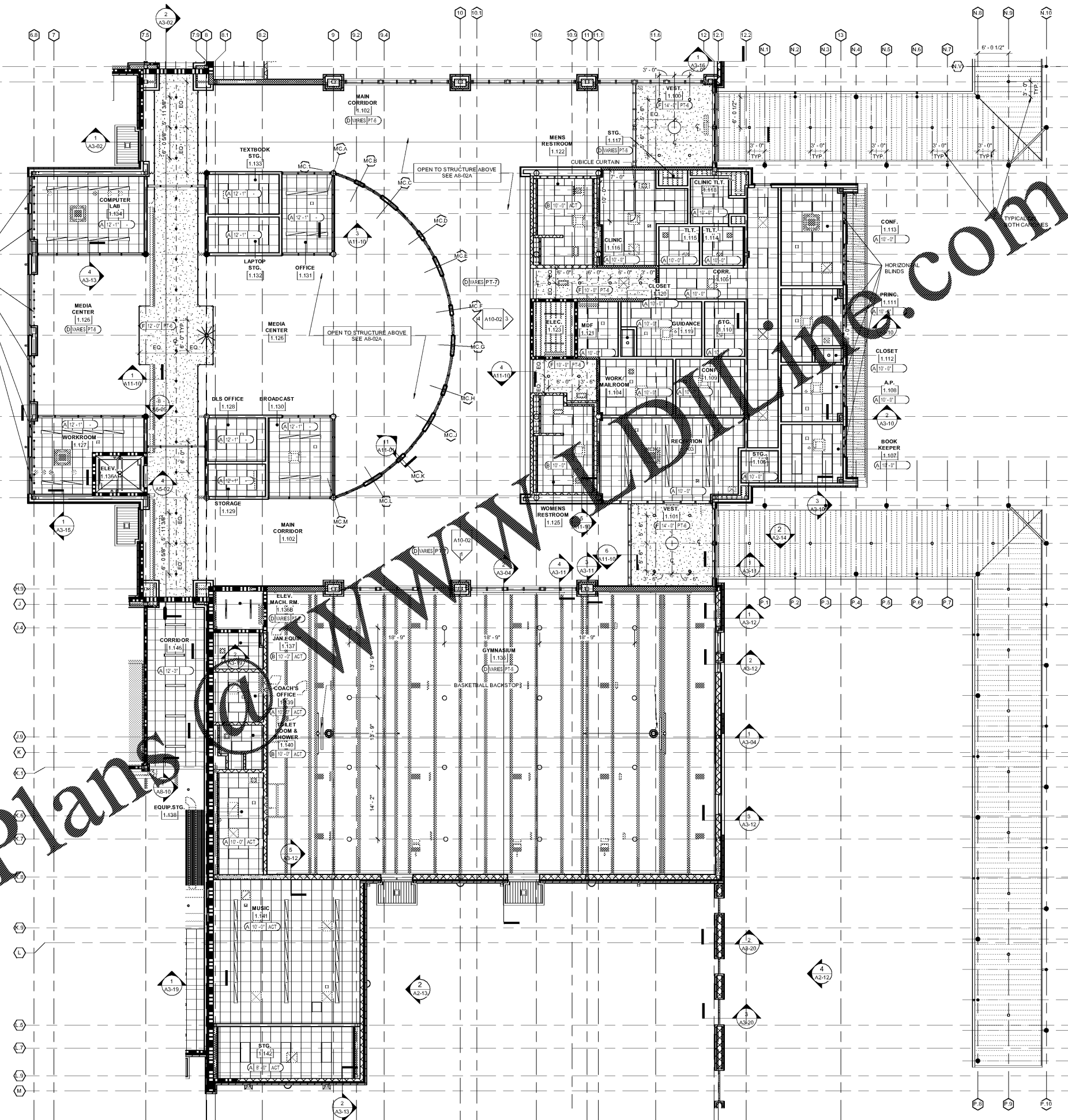
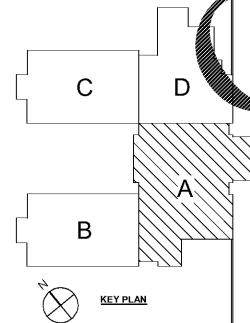


REFLECTED CEILING PLAN LEGEND		
SYM.	DESCRIPTION	CEILING TYPE LEGEND
	2X4 RECESSED LIGHT FIXTURE	A 2' X 2' SUSPENDED ACOUSTIC CEILING
	LINEAR LIGHT FIXTURE	B 2' X 2' SUSPENDED ACOUSTIC CEILING (WATER RESISTIVE)
	DOWNLIGHT	C 2' X 2' STAINLESS STEEL PANELS
	LED DOWNLIGHT	D EXPOSED STRUCTURE (SEE NOTES ABOVE)
	SUPPLY	E EIFS SOFFIT
	RETURN	F SUSPENDED GYPSUM BOARD
	ACOUSTICAL PANEL	F1 1 HOUR RATED GYPSUM BOARD
	SKYDOME LIGHT FIXTURE	G SUSPENDED LINEAR METAL (FAUX WD. FINISH) CEILING
	HORIZONTAL BLINDS	H SUSPENDED ACOUSTIC BAFFLE CEILING
	CEILING TAG	J SUSPENDED ACOUSTIC CLOUD CEILING
	CEILING HEIGHT	OPEN TO ABOVE OR BELOW
	CEILING FINISH	
	CEILING TYPE	

- REFLECTED CEILING PLAN GENERAL NOTES**
- ALL MECHANICAL, ELECTRICAL, PLUMBING AND MISCELLANEOUS CONDUIT ITEMS TO BE LOCATED TIGHT TO STRUCTURAL SLAB ABOVE. FOLLOW PROFILE OF BEAMS WHERE APPLICABLE.
 - PROVIDE METAL, INSULATED DUCT AT ALL EXPOSED AREAS IN PUBLIC SPACES.
 - ALL VISIBLE ITEMS INCLUDING STRUCTURAL AND UTILITIES TO BE PAINTED (TBD).
 - PROVIDE FLUSH MOUNT FIRE PROTECTION DEVICES AT ALL GYPSUM BOARD AREAS.
 - ANY DIFFUSERS LOCATED AT GYP. BOARD SOFFITS / CEILINGS TO BE LINEAR TYPE FLUSH MOUNTED FLUSH WITH ADJACENT ELEMENT.



1 REFLECTED CEILING PLAN-LEVEL 01 PART A
A8-01A 1/8" = 1'-0"

Smallwood, Reynolds, Stewart & Associates, Inc. Architects
 One Piedmont Center, Suite 303 3565 Piedmont Road Atlanta, Georgia 30305

PROJECT SUMMARY
 PROJECT: J.H. HOUSE ELEMENTARY SCHOOL
 GRADE: PRE-K THROUGH 5TH
 P.T.E. #00
 G.O.D.E.# TO BE ASSIGNED

REVISIONS / PRINTED

REV. NO.	DATE	REMARKS
00/010		PROGRESS PRINT
00/019		ISSUED FOR BID / PERMIT / CLOSE

INSTRUCTIONAL UNITS

UNITS	45	51
REGULAR CLASSROOMS		
REGULAR CLASSROOMS	71,153 SF	
MUSIC	3,233 SF	
PHYSICAL EDUCATION	106,831 SF	
ART CENTER		
ART		
TOTAL	181,217 SF	

BUILDING AREA

LEVEL	LEVEL SQ. FT.	TOTAL
LEVEL 01	181,217 SF	
TOTAL	181,217 SF	

COVERED AREAS (SEE CANNOTIONS)

COVERED AREAS	5,188 SF	1,188 SF
COVERED AREAS	5,188 SF	
COVERED AREAS		1,188 SF
TOTAL	6,376 SF	

RCPS
 RICHMOND COUNTY PUBLIC SCHOOLS

J.H. HOUSE ELEMENTARY SCHOOL
 3100 Zingira Road NE, Conyers, GA 30012

DATE: 10-01-2019
 JOB NO.: 218036.00
 SHEET NO.: A8-01A

ISSUED FOR CONSTRUCTION