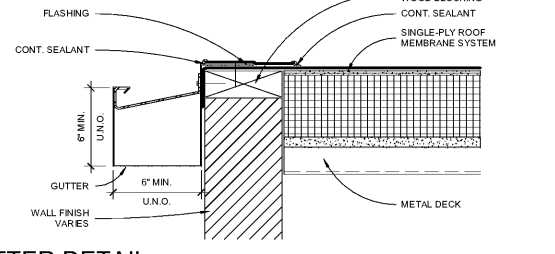
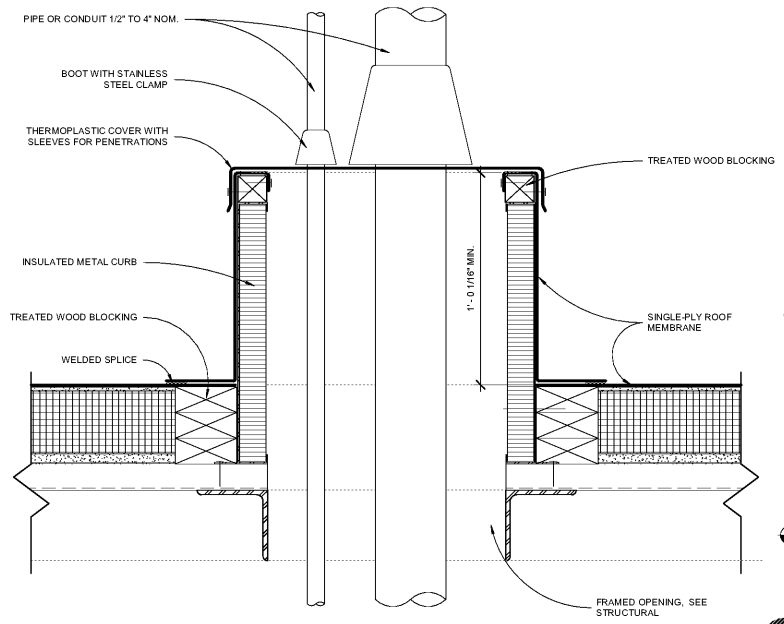


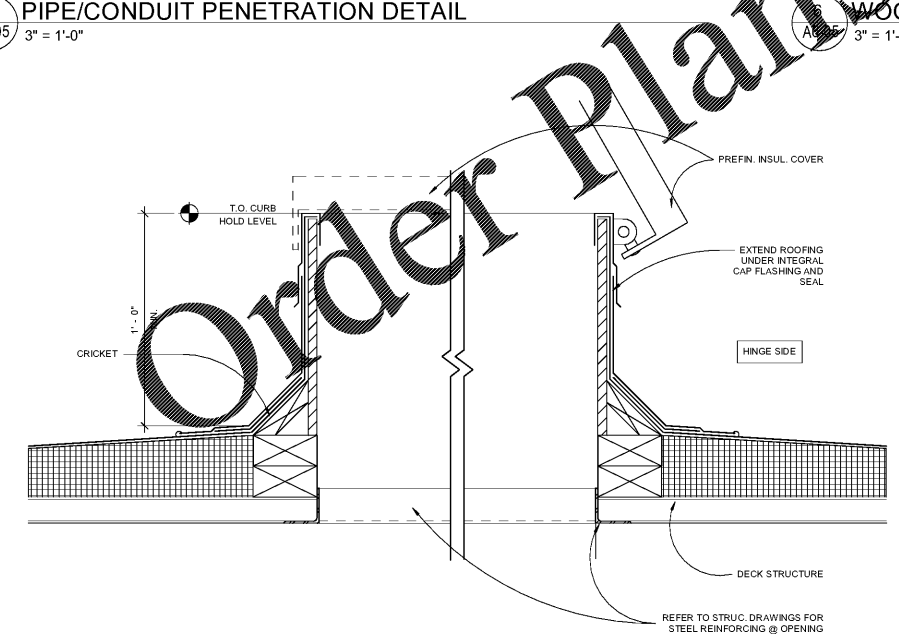
13 GRAVEL STOP DETAIL  
A6-05 3" = 1'-0"



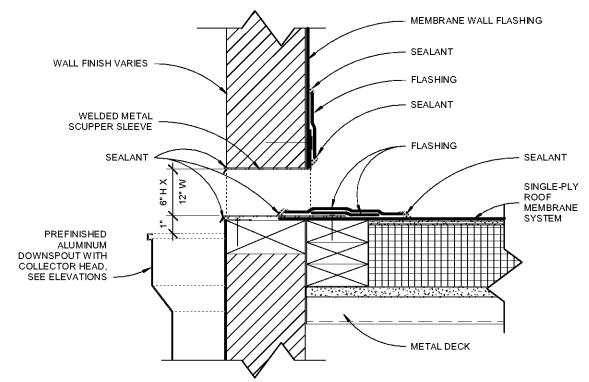
11 GUTTER DETAIL  
A6-05 3" = 1'-0"



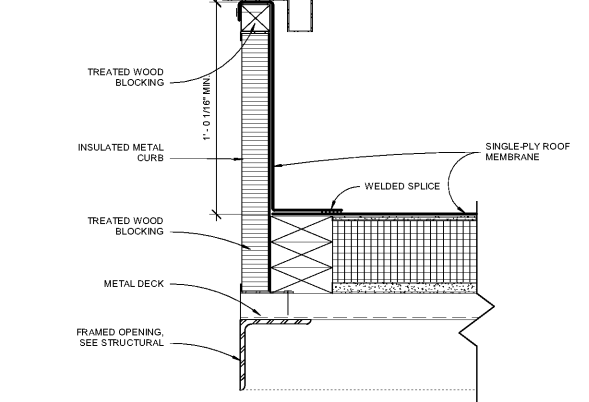
7 PIPE/CONDUIT PENETRATION DETAIL  
A6-05 3" = 1'-0"



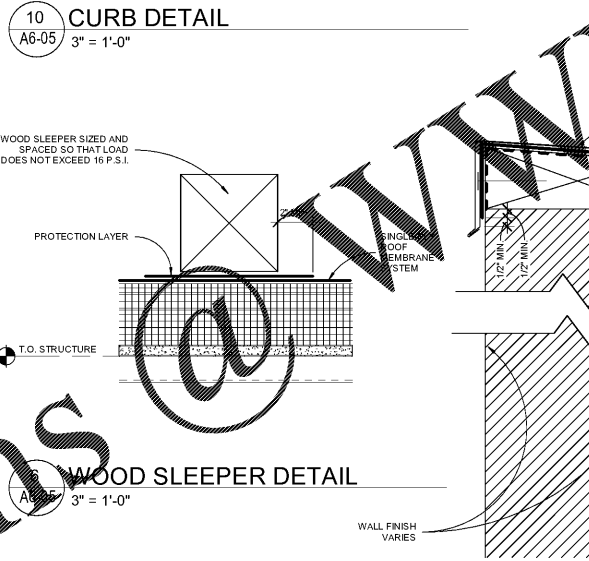
3 ROOF HATCH DETAIL  
A6-05 1 1/2" = 1'-0"



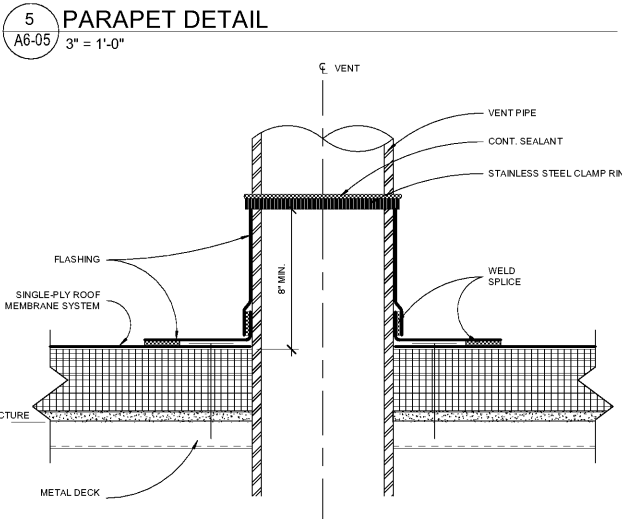
12 SCUPPER DETAIL  
A6-05 3" = 1'-0"



10 CURB DETAIL  
A6-05 3" = 1'-0"

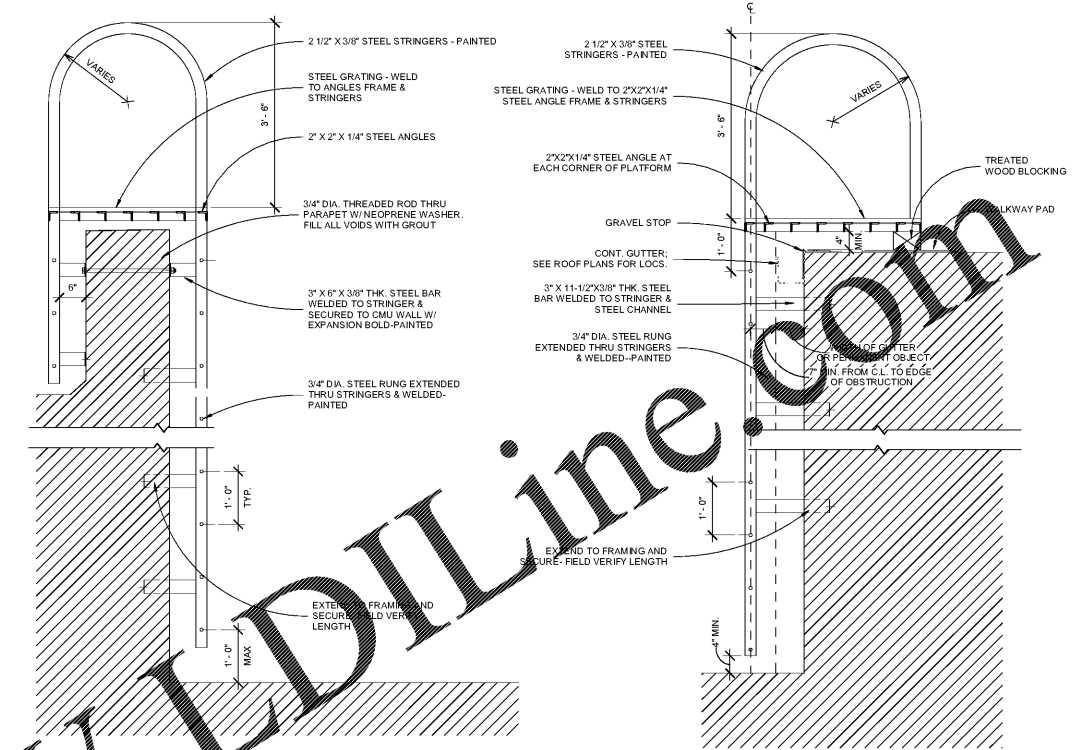


WOOD SLEEPER DETAIL  
A6-05 3" = 1'-0"

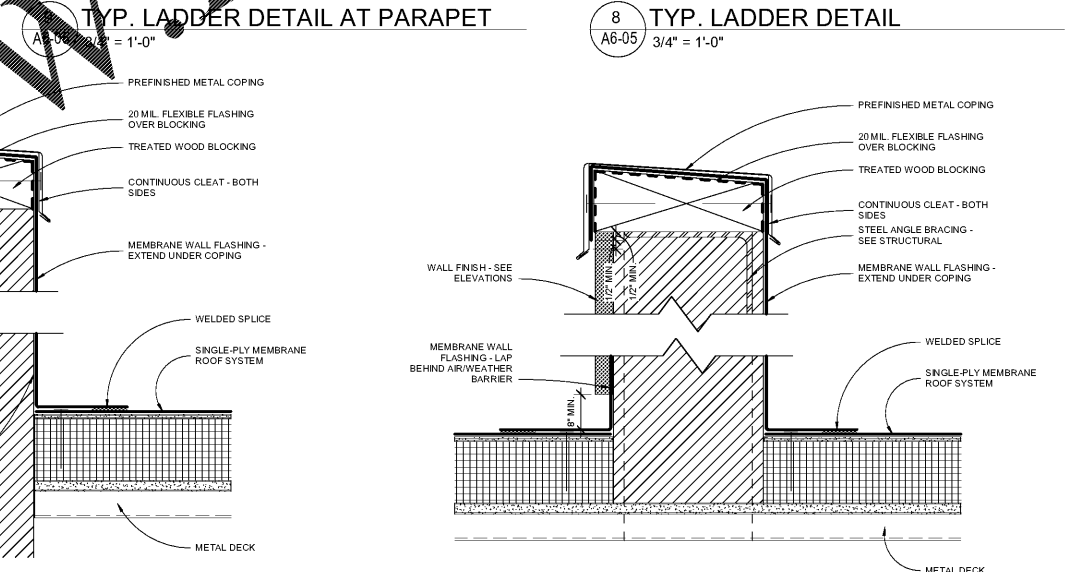


5 PARAPET DETAIL  
A6-05 3" = 1'-0"

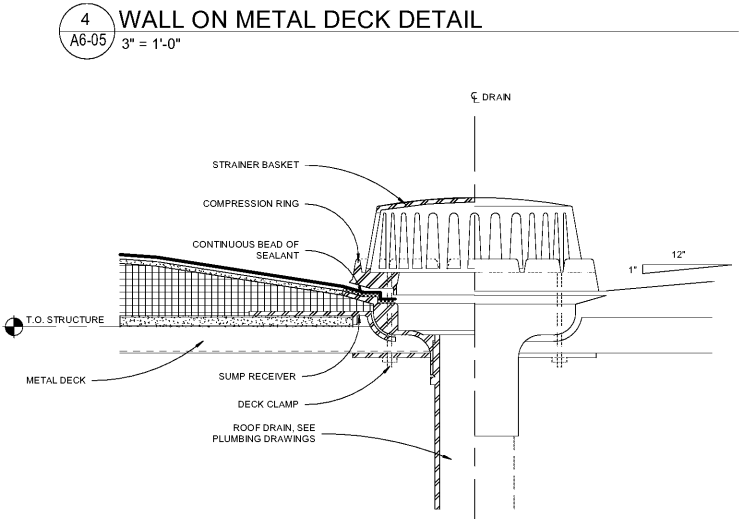
2 VENT PIPE DETAIL  
A6-05 3" = 1'-0"



TYP. LADDER DETAIL AT PARAPET  
A6-05 3" = 1'-0"



8 TYP. LADDER DETAIL  
A6-05 3/4" = 1'-0"



1 ROOF DRAIN DETAIL  
A6-05 3" = 1'-0"

4 WALL ON METAL DECK DETAIL  
A6-05 3" = 1'-0"

Order Plans @ WWW.LDILine.com

REV. NO.	DATE	REVISIONS / PRINTED
00010		ISSUE FOR PERMIT / ISSUE

INSTRUCTIONAL UNIT	
REGULAR CLASSROOMS	46
REGULAR PLEX AREAS	1
MUSIC	1
PHYSICAL EDUCATION	1
ART	1
TOTAL	51

BUILDING AREA	
LEVEL 01	71,153 SF
LEVEL 02	32,239 SF
TOTAL	103,392 SF
COVERED AREAS (IE CANOPIES)	
COVERED AREAS	6,186 SF
TOTAL	109,578 SF



DESIGNED BY: STUART & ASSOCIATES, INC.  
 PREPARED BY: STUART & ASSOCIATES, INC.  
 CHECKED BY: STUART & ASSOCIATES, INC.  
 APPROVED BY: STUART & ASSOCIATES, INC.

**TYPICAL ROOF DETAILS**  
**J.H. HOUSE ELEMENTARY SCHOOL**  
 3100 Zingira Road NE, Conyers, GA 30012

DATE: 10-01-2019  
 JOB NO: 218036.00  
 SHEET NO: A6-05  
 ISSUED FOR CONSTRUCTION

Smallwood, Reynolds, Stewart & Associates, Inc. Architects  
 One Piedmont Center, Suite 303 3565 Piedmont Road Atlanta, Georgia 30305