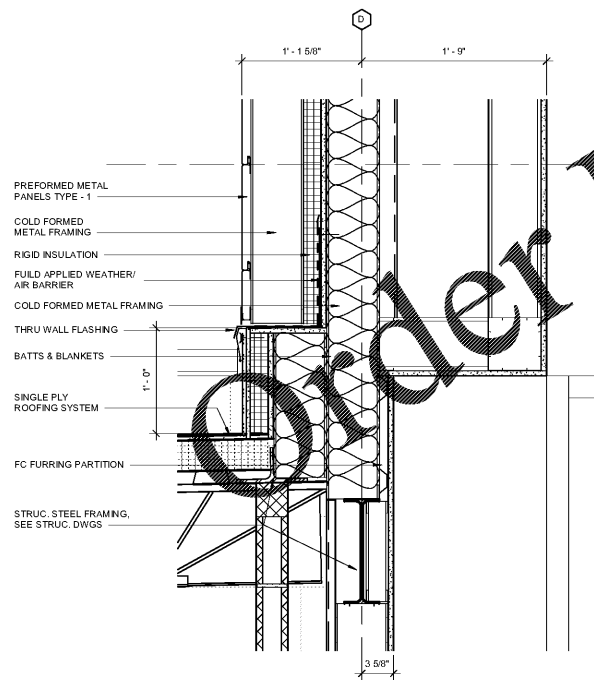
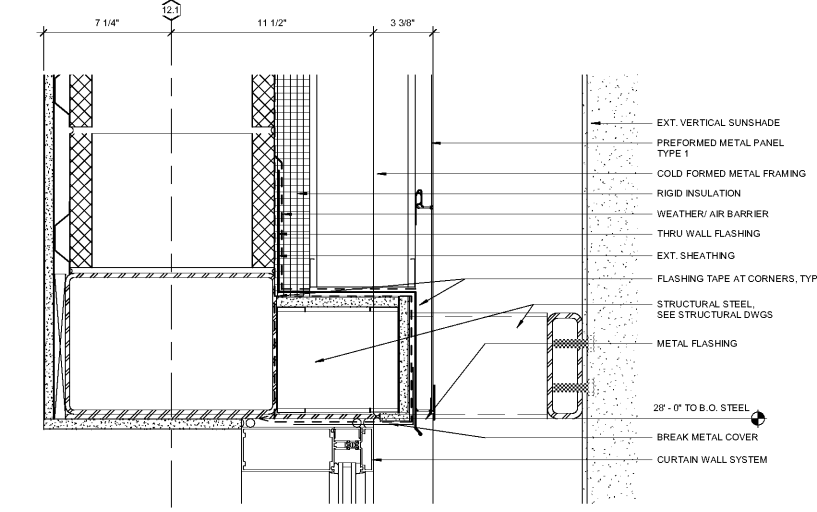


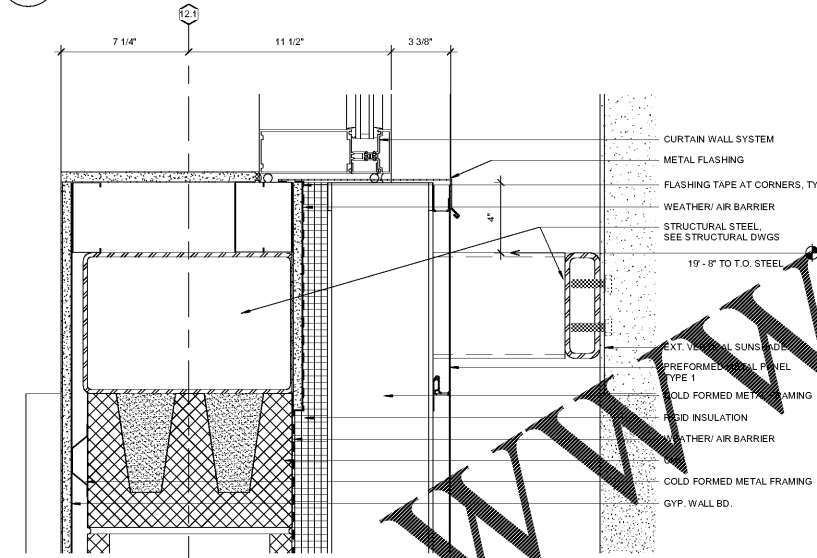
9 LADDER DETAIL AT E.J.
 A6-04 3/4" = 1'-0"



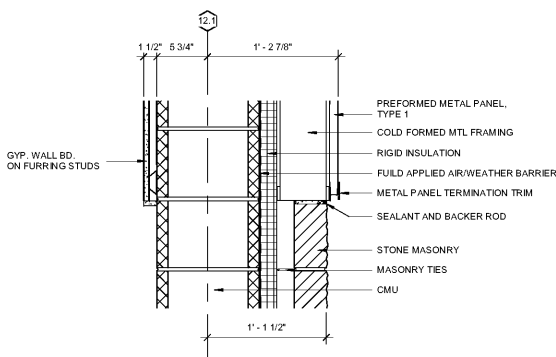
4 DETAIL AT STAFF DINING-CAFE ROOF
 A6-04 1 1/2" = 1'-0"



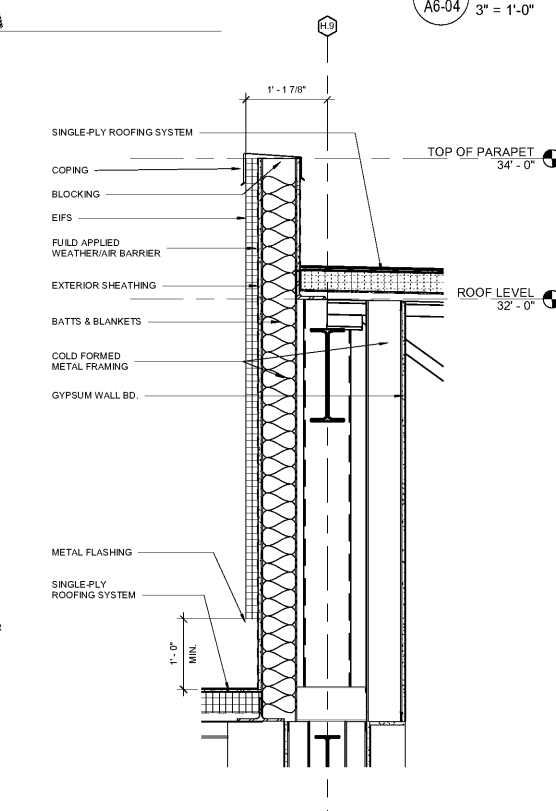
8 HEAD DETAIL @ GYM
 A6-04 3" = 1'-0"



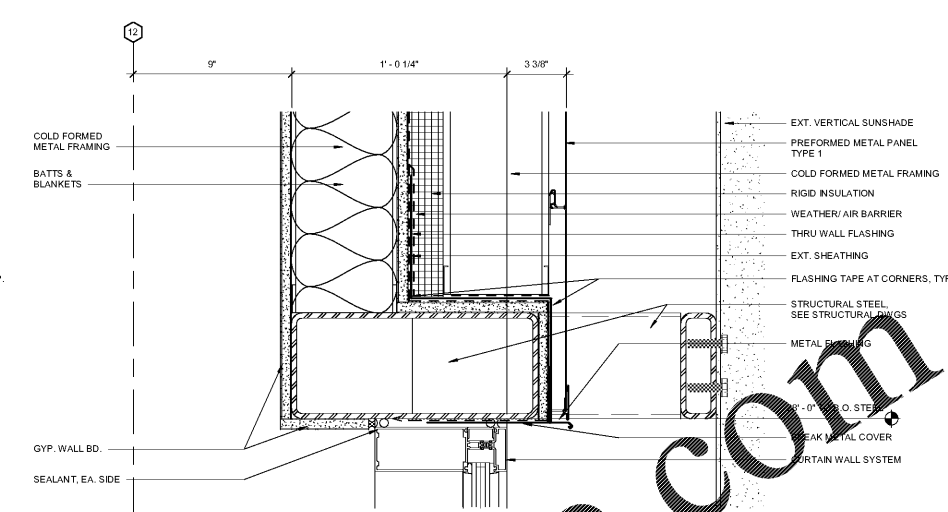
6 SILL DETAIL @ GYM
 A6-04 3" = 1'-0"



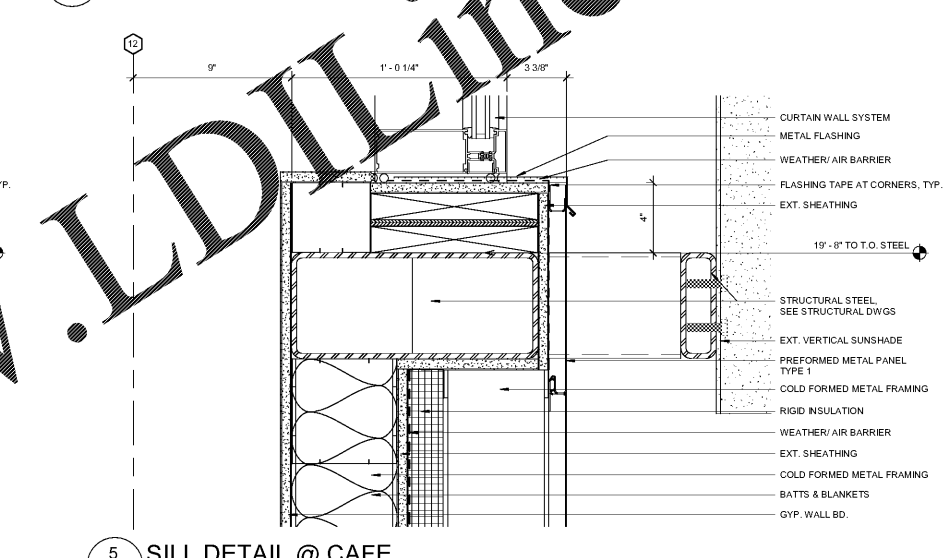
3 DETAIL AT METAL PANEL/MASONRY
 A6-04 1 1/2" = 1'-0"



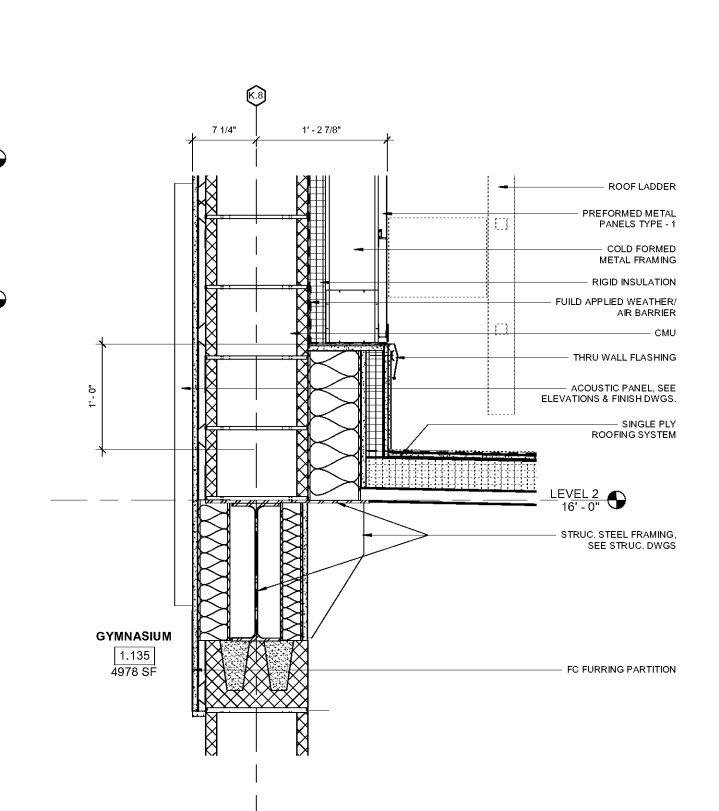
2 DETAIL AT HIGH/LOW ROOF
 A6-04 1" = 1'-0"



7 HEAD DETAIL @ CAFE
 A6-04 3" = 1'-0"



5 SILL DETAIL @ CAFE
 A6-04 3" = 1'-0"



1 DETAIL AT MUSIC ROOM ROOF
 A6-04 1 1/2" = 1'-0"

Smallwood, Reynolds, Stewart & Associates, Inc. Architects

One Piedmont Center, Suite 303 3565 Piedmont Road Atlanta, Georgia 30305

EXTERIOR DETAILS

J.H. HOUSE ELEMENTARY SCHOOL
 3100 Zingira Road NE, Conyers, GA 30012

DATE 10-01-2019
 JOB NO. 218036.00
 SHEET NO. A6-04

ISSUED FOR CONSTRUCTION

REV. NO.	DATE	REMARKS
46		
47		
48		
49		
50		
51		

INSTRUCTIONAL UNITS	REGULAR CLASSROOMS	REGULAR FLEX AREAS	MUSIC	PHYSICAL EDUCATION	ART CENTER	TOTAL
REGULAR AREA	71,153 SF	32,238 SF	10,653 SF			
COVERED AREAS (I.E. CANOPIES)			5,198 SF			
TOTAL	103,844 SF	37,436 SF	15,851 SF			157,131 SF

RCPS

SEALANT, EA. SIDE