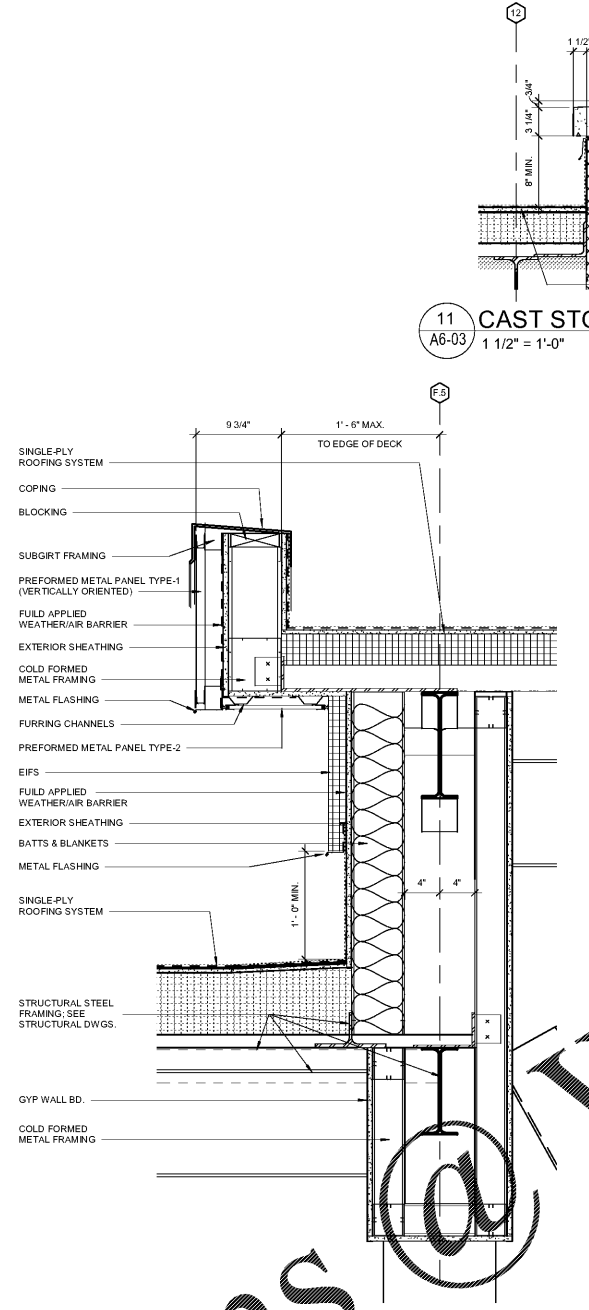
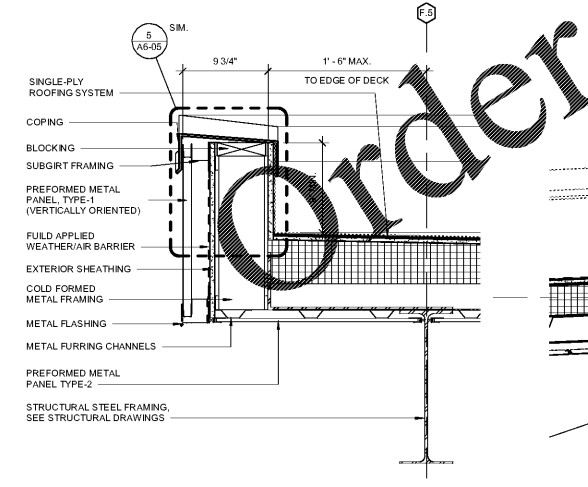


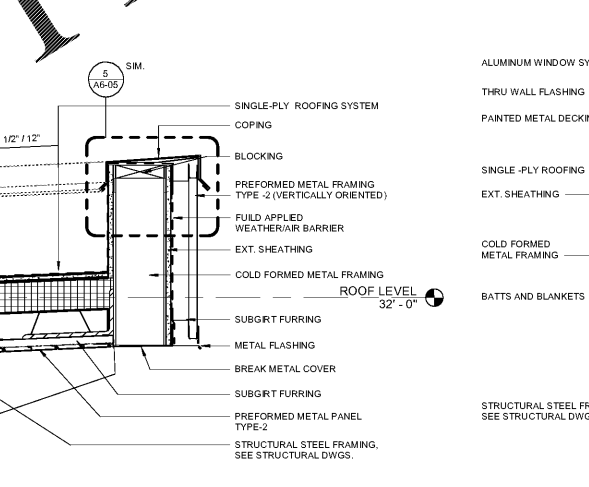
8 SECTION AT BUTTERFLY ROOF
A6-03 1 1/2" = 1'-0"



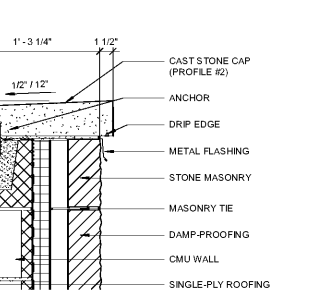
7 SECTION AT BUTTERFLY ROOF
A6-03 1/2" = 1'-0"



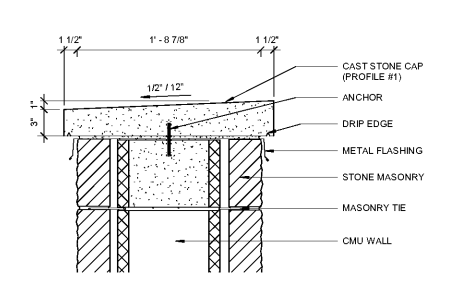
4 SECTION AT BUTTERFLY ROOF
A6-03 1 1/2" = 1'-0"



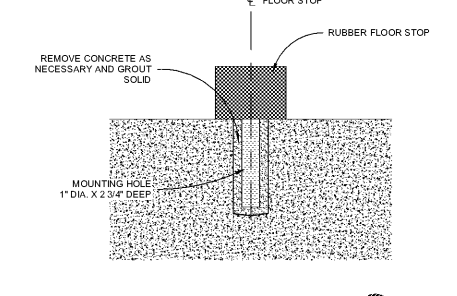
3 DETAIL @ BUTTERFLY ROOF
A6-03 1 1/2" = 1'-0"



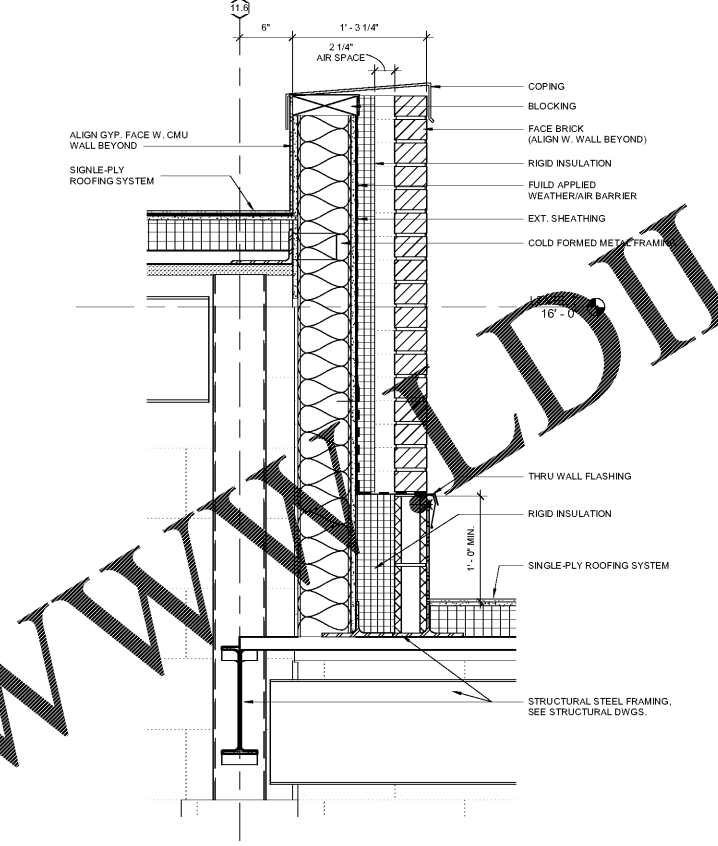
11 CAST STONE CAP AT STAFF DINING
A6-03 1 1/2" = 1'-0"



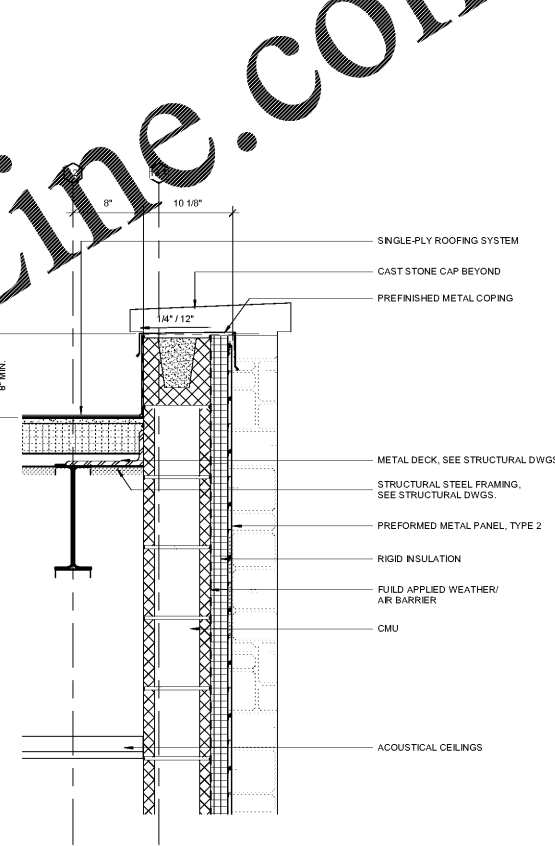
10 CAST STONE CAP AT SCREEN WALL
A6-03 1 1/2" = 1'-0"



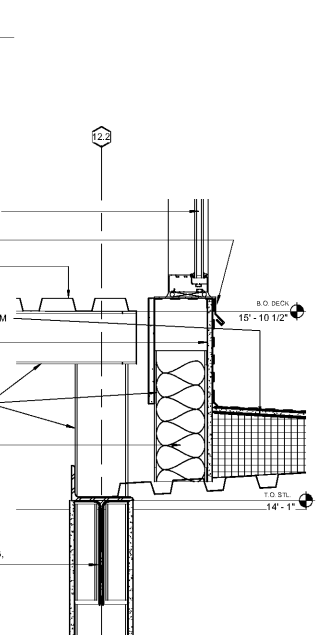
9 EXTERIOR DOOR STOP DETAIL
A6-03 6" = 1'-0"



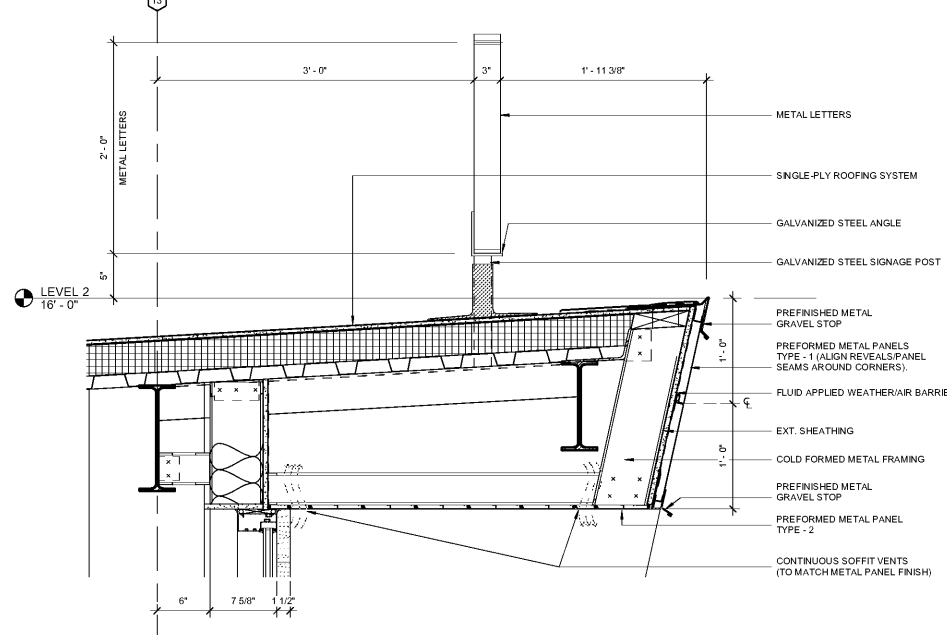
6 DETAIL AT STAFF DINING - 1
A6-03 1 1/2" = 1'-0"



5 DETAIL AT STAFF DINING
A6-03 1 1/2" = 1'-0"



2 ADMIN. ROOF DETAIL - 1
A6-03 1 1/2" = 1'-0"



1 ADMIN. ROOF DETAIL
A6-03 1 1/2" = 1'-0"

Order Plans

WWW.DILine.com

Smallwood, Reynolds, Stewart, & Associates, Inc. Architects

One Piedmont Center, Suite 303 3565 Piedmont Road Atlanta, Georgia 30305

REV. NO.	DATE	REVISIONS / PRINTED
00010	ISSUED FOR PERMIT	08/11/2019

INSTRUCTIONAL UNIT	LEVEL SQ. FT.	COVERED AREAS (SEE CHANGES)	TOTAL
REGULAR CLASSROOMS	71,152 SF		71,152 SF
REGULAR FLEX AREAS	3,223 SF		3,223 SF
MUSIC	10,633 SF		10,633 SF
PHYSICAL EDUCATION			
ART CENTER			
ART			
TOTAL	85,008 SF		85,008 SF

RCPS

J.H. HOUSE ELEMENTARY SCHOOL
3100 Zingira Road NE, Conyers, GA 30012

DATE: 10-01-2019
JOB NO: 218036.00
SHEET NO: A6-03

ISSUED FOR CONSTRUCTION