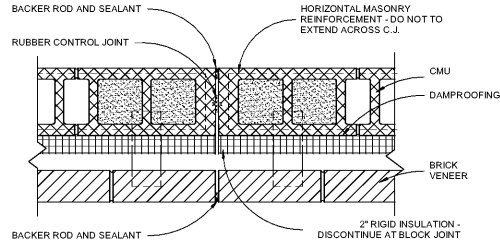
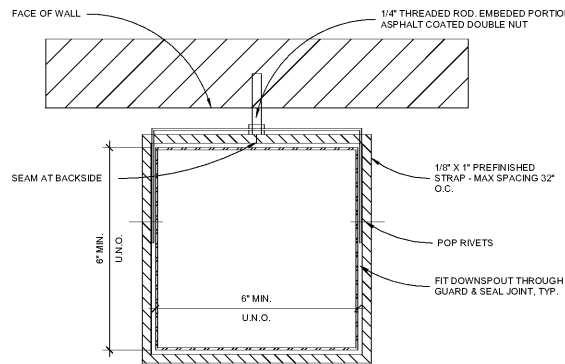


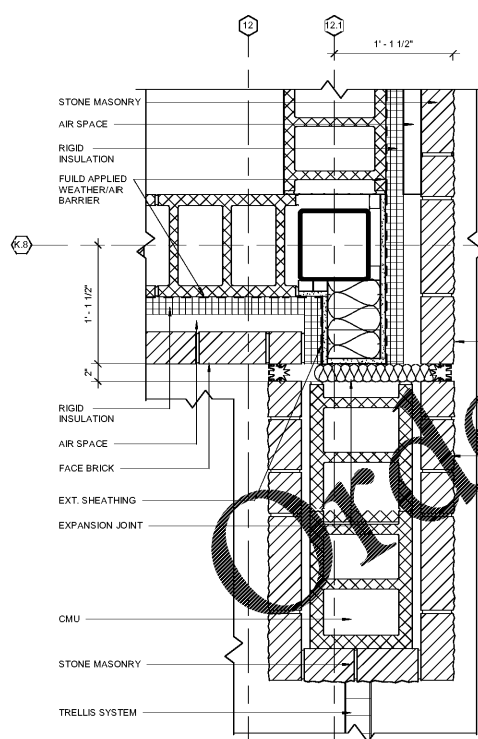
13 SUNSHADE DETAIL
A6-01 1 1/2" = 1'-0"



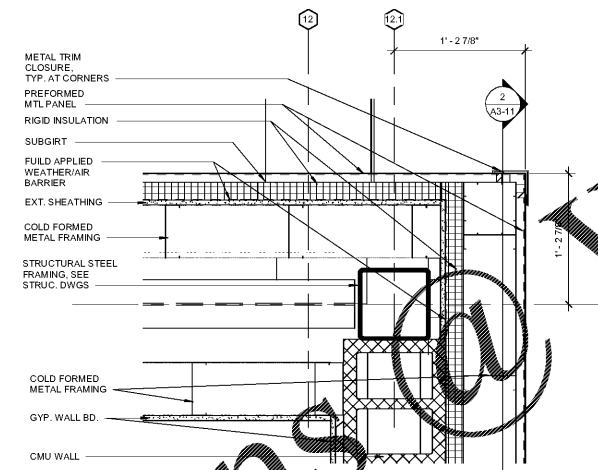
12 TYP. MASONRY C.J. DETAIL
A6-01 1 1/2" = 1'-0"



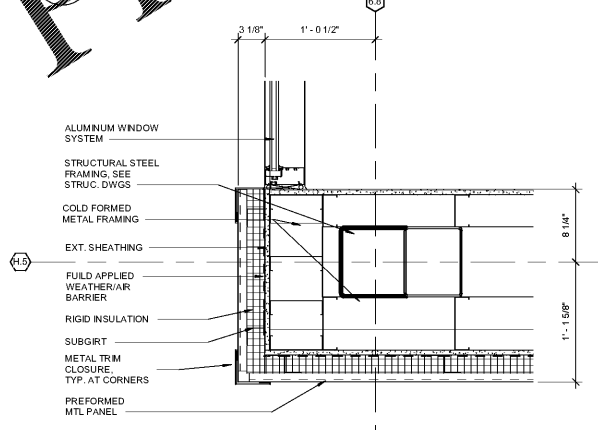
8 ENLARGED DOWNSPOUT DETAIL
A6-01 6" = 1'-0"



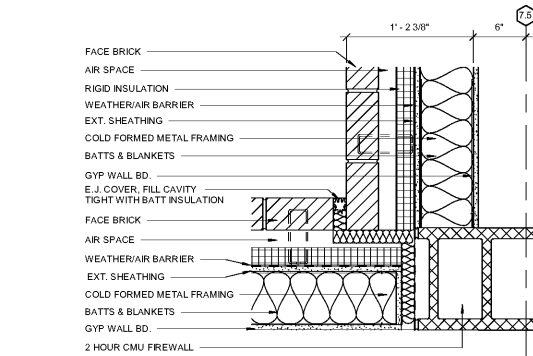
4 DETAIL AT GYM EXPANSION JOINT
A6-01 1 1/2" = 1'-0"



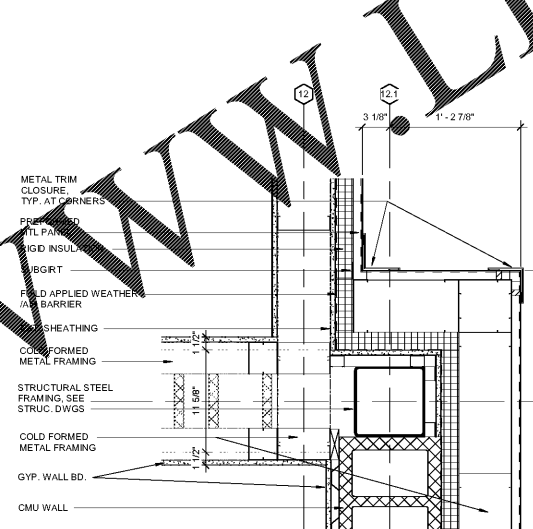
PLAN DETAIL - GYM & VEST. - ROOF
A6-01 1 1/2" = 1'-0"



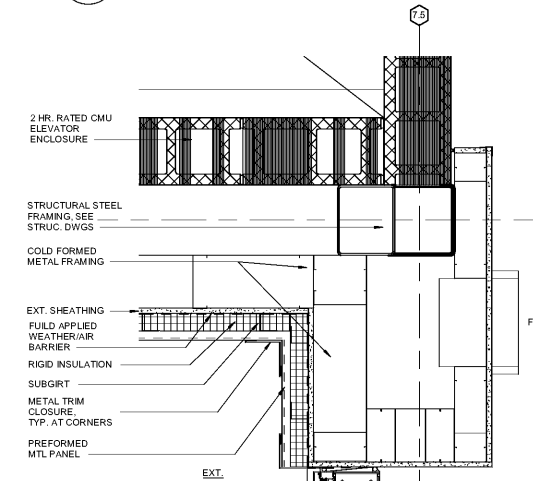
3 DETAIL AT WORKROOM EXT. WALL
A6-01 1 1/2" = 1'-0"



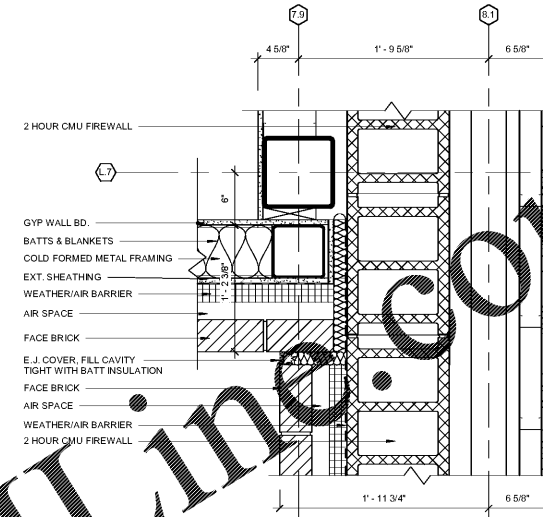
10 DETAIL AT EXPANSION JOINT
A6-01 1 1/2" = 1'-0"



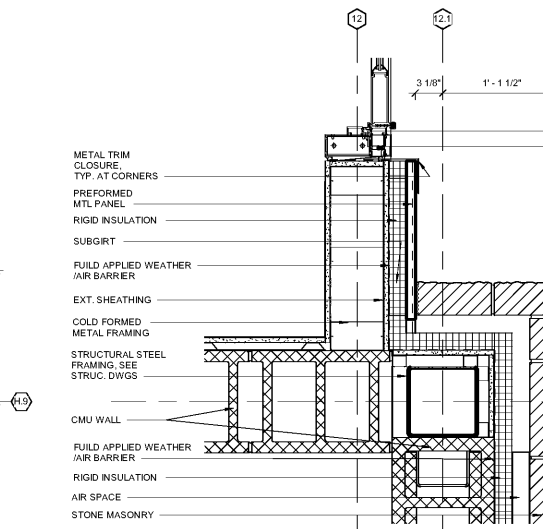
6 PLAN DETAIL - GYM & VEST. - L.02
A6-01 1 1/2" = 1'-0"



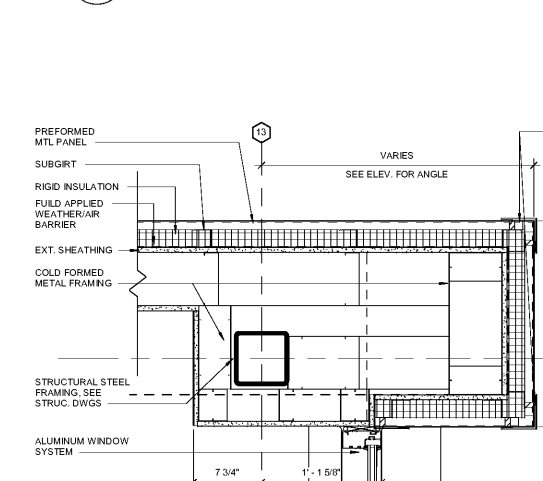
2 DETAIL AT ELEVATOR EXT. WALL
A6-01 1 1/2" = 1'-0"



9 DETAIL AT EXPANSION JOINT
A6-01 1 1/2" = 1'-0"



5 PLAN DETAIL - GYM & VEST. - L.01
A6-01 1 1/2" = 1'-0"



1 PLAN DETAIL AT ADMIN. EXT. WALL
A6-01 1 1/2" = 1'-0"

Order Plans @

WWW.LDILINE.COM

Smallwood, Reynolds, Stewart, & Associates, Inc. Architects

One Piedmont Center, Suite 303 3565 Piedmont Road Atlanta, Georgia 30305

REV. NO.	DATE	REMARKS
0001	08/13/19	PROGRESS PRINT
0002	09/19/19	ISSUED FOR BID / PERMIT / CLOSE

REVISIONS / PRINTED	
46	81

INSTRUCTIONAL UNITS	
REGULAR CLASSROOMS	71,153 SF
REGULAR FLEX AREAS	32,239 SF
MUSIC	106,531 SF
PHYSICAL EDUCATION	5,198 SF
ART CENTER	5,198 SF
AET	2,255 SF
TOTAL	212,575 SF

BUILDING AREA	
LEVEL 01	71,153 SF
LEVEL 02	32,239 SF
TOTAL	103,392 SF

COVERED AREAS (I.E. CANOPIES)	
COVERED AREAS	5,198 SF
COVERED BY 2	2,255 SF
TOTAL	7,453 SF

PROJECT SUBMITTAL: J.H. HOUSE ELEMENTARY SCHOOL
GRADE: PRE-K THROUGH 5TH
P.T.E. #00 TO BE ASSIGNED
C.O.D.E.# TO BE ASSIGNED

RCPS

ISSUED PLAN DETAILS

J.H. HOUSE ELEMENTARY SCHOOL
3100 Zingira Road NE, Conyers, GA 30012

DATE: 10-01-2019
JOB NO.: 218036.00
SHEET NO.: A6-01

ISSUED FOR CONSTRUCTION