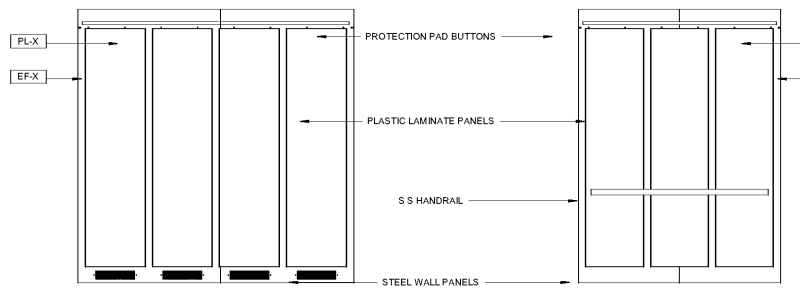
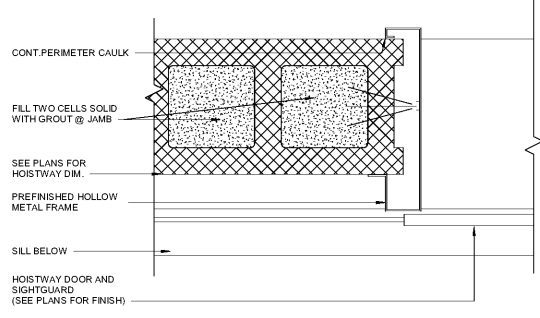


10 ELEVATOR HEAD DETAIL  
A5-02 3" = 1'-0"

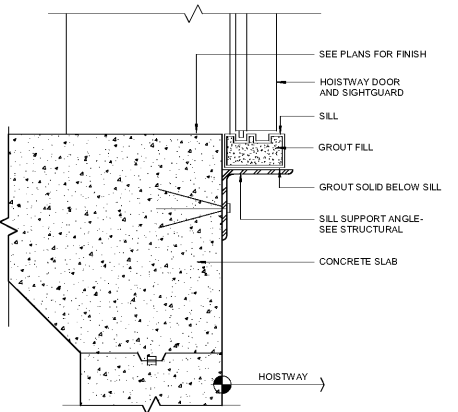


6 ELEVATOR ELEVATION B  
A5-02 1/2" = 1'-0"

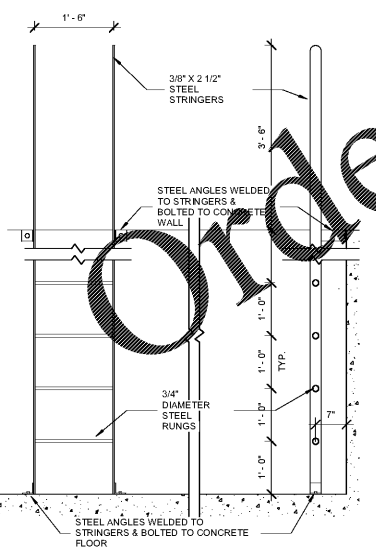
5 ELEVATOR ELEVATION A  
A5-02 1/2" = 1'-0"



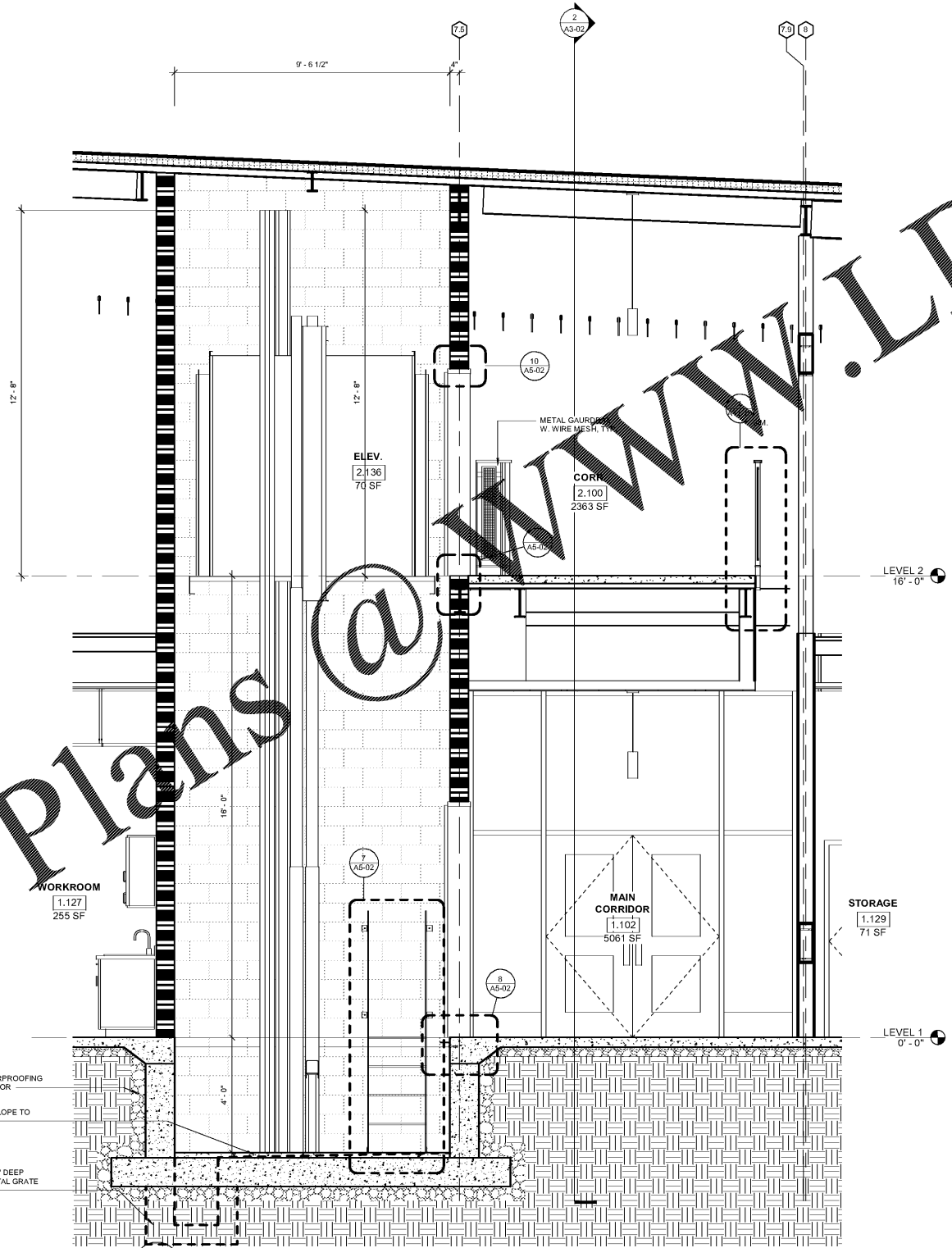
9 ELEVATOR JAMB DETAIL  
A5-02 3" = 1'-0"



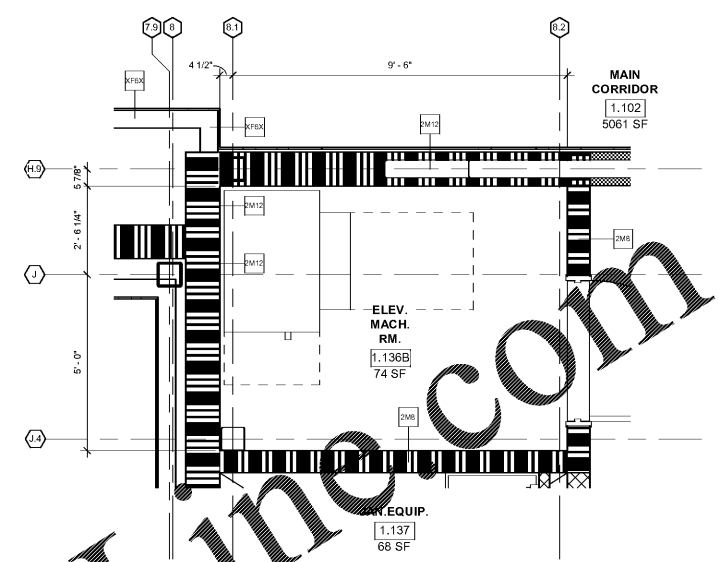
8 ELEVATOR SILL DETAIL  
A5-02 3" = 1'-0"



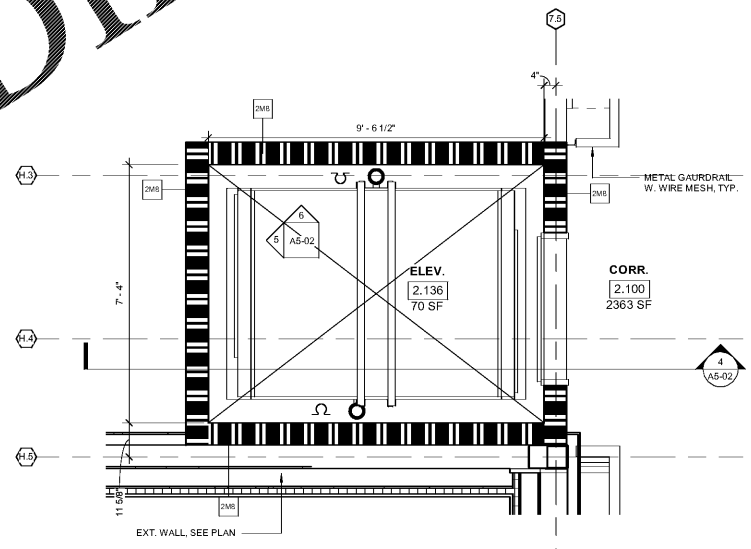
7 ELEVATOR PIT LADDER  
A5-02 3/4" = 1'-0"



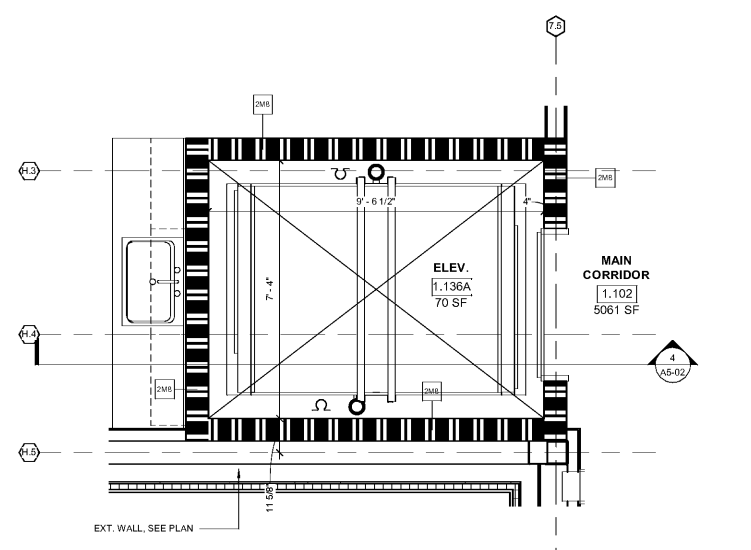
4 ELEVATOR SECTION  
A5-02 1/2" = 1'-0"



3 ENLARGED ELEVATOR MACHINE RM PLAN  
A5-02 1/2" = 1'-0"



2 ENLARGED ELEVATOR PLAN - LEVEL 2  
A5-02 1/2" = 1'-0"



1 ENLARGED ELEVATOR PLAN - LEVEL 1  
A5-02 1/2" = 1'-0"

Order Plans @ www.LDHLinc.com

Smallwood, Reynolds, Stewart & Associates, Inc. Architects

One Piedmont Center, Suite 303 3565 Piedmont Road Atlanta, Georgia 30305

REV. NO.	DATE	REMARKS
1	10/01/19	ISSUE FOR BID / PERMIT / CLOSE
2		
3		
4		
5		
6		
7		
8		
9		
10		

REVISIONS / PRINTED	REVISIONS / PRINTED
45	81
REGULAR CLASSROOMS	71,153 SF
REGULAR CLASSROOMS	32,238 SF
MUSIC	106,631 SF
PHYSICAL EDUCATION	5,188 SF
ART CENTER	5,188 SF
AET	5,188 SF
TOTAL	2,285 SF

**ELEVATOR DETAILS**

**J.H. HOUSE ELEMENTARY SCHOOL**  
3100 Zingira Road NE, Conyers, GA 30012

DATE: 10-01-2019  
JOB NO: 218036.00  
SHEET NO: A5-02

ISSUED FOR CONSTRUCTION