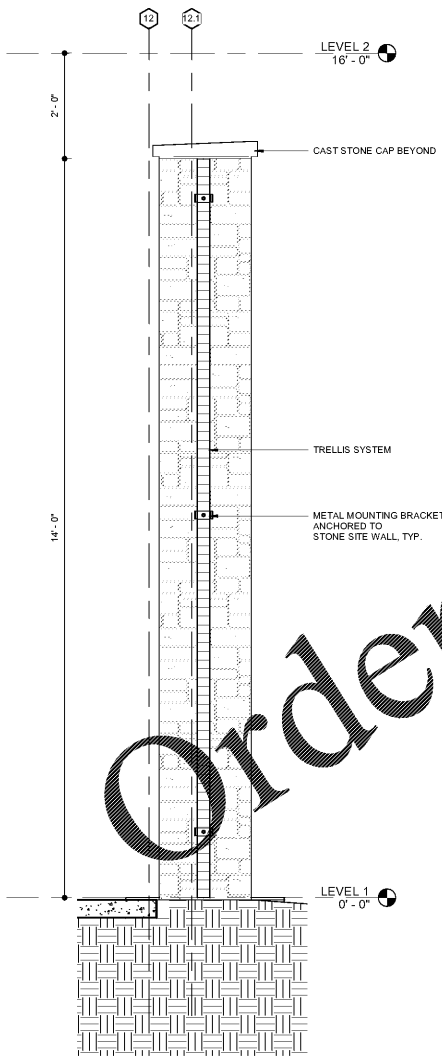
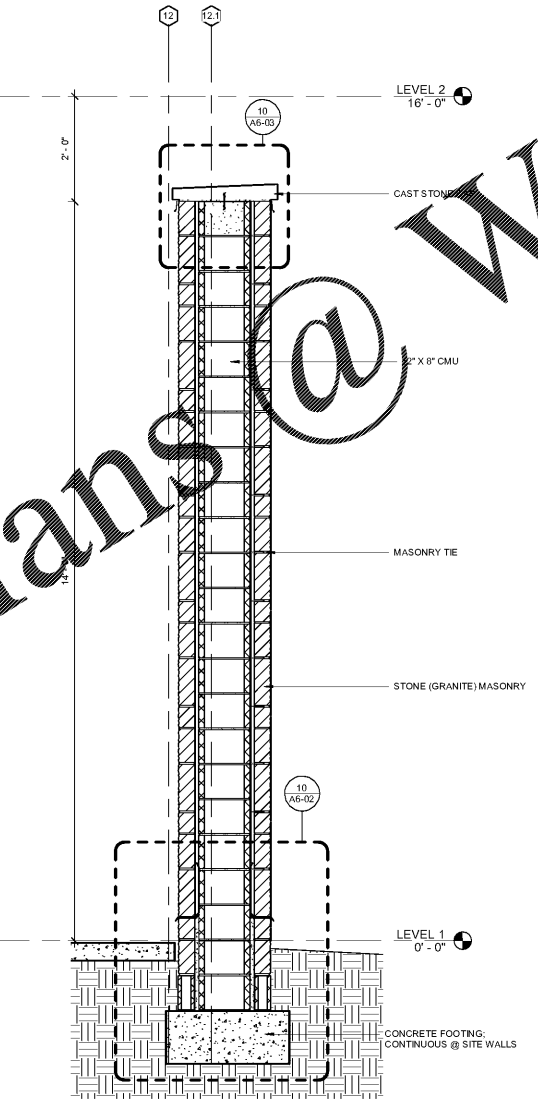


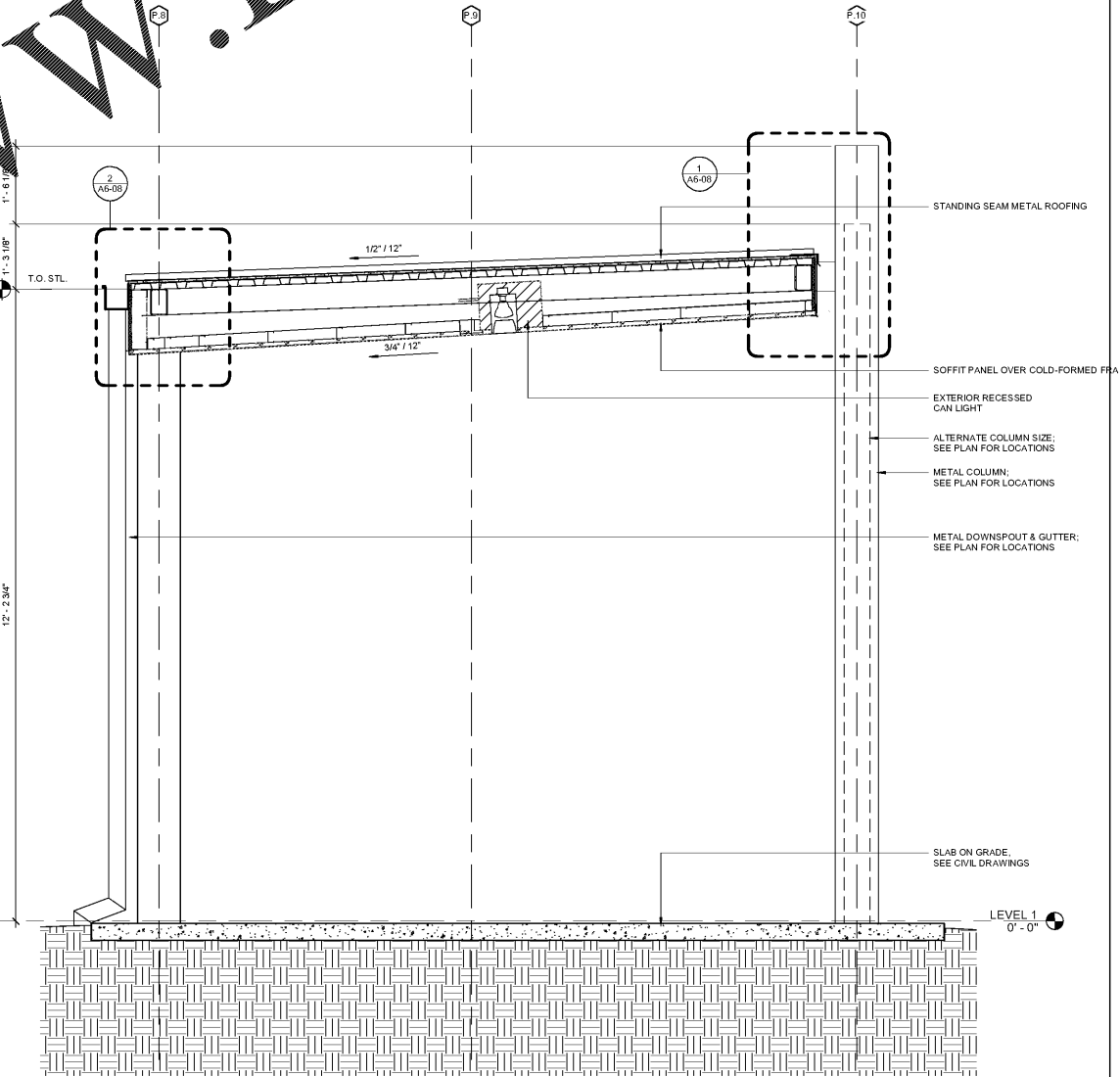
4 SERVICE YARD WALL  
1/2" = 1'-0"



3 SITE SCREEN WALL - PLANTER  
3/4" = 1'-0"



2 SITE SCREEN WALL - STONE  
3/4" = 1'-0"



1 SECTION AT ENTRY CANOPY  
3/4" = 1'-0"

Order Plans @ www.LDILine.com

REV. NO.	DATE	REMARKS
1	08/10/19	PROGRESS PRINT
2	09/03/19	ISSUED FOR BIDDING
3	10/01/19	PERMITS
4		
5		

INSTRUCTIONAL UNITS	NO.
REGULAR CLASSROOMS	46
MUSIC	1
PHYSICAL EDUCATION	1
ART CENTER	1
TOTAL	51

BUILDING AREA	SF
LEVEL 01	71,152 SF
LEVEL 02	32,229 SF
TOTAL	103,381 SF



STEWART & ASSOCIATES, INC. ARCHITECTS  
1525 OLD OAK RIDGE DRIVE, SUITE 200  
DECATUR, GEORGIA 30034  
PH: 404.251.8888  
WWW.STEWARTANDASSOCIATES.COM

Smallwood, Reynolds, Stewart & Associates, Inc. Architects One Piedmont Center, Suite 303 3565 Piedmont Road Atlanta, Georgia 30305

SITE SECTIONS	
J.H. HOUSE ELEMENTARY SCHOOL 3100 Zingira Road NE, Conyers, GA 30012	
DATE	10-01-2019
JOB NO.	218036.00
SHEET NO.	A3-20

ISSUED FOR CONSTRUCTION