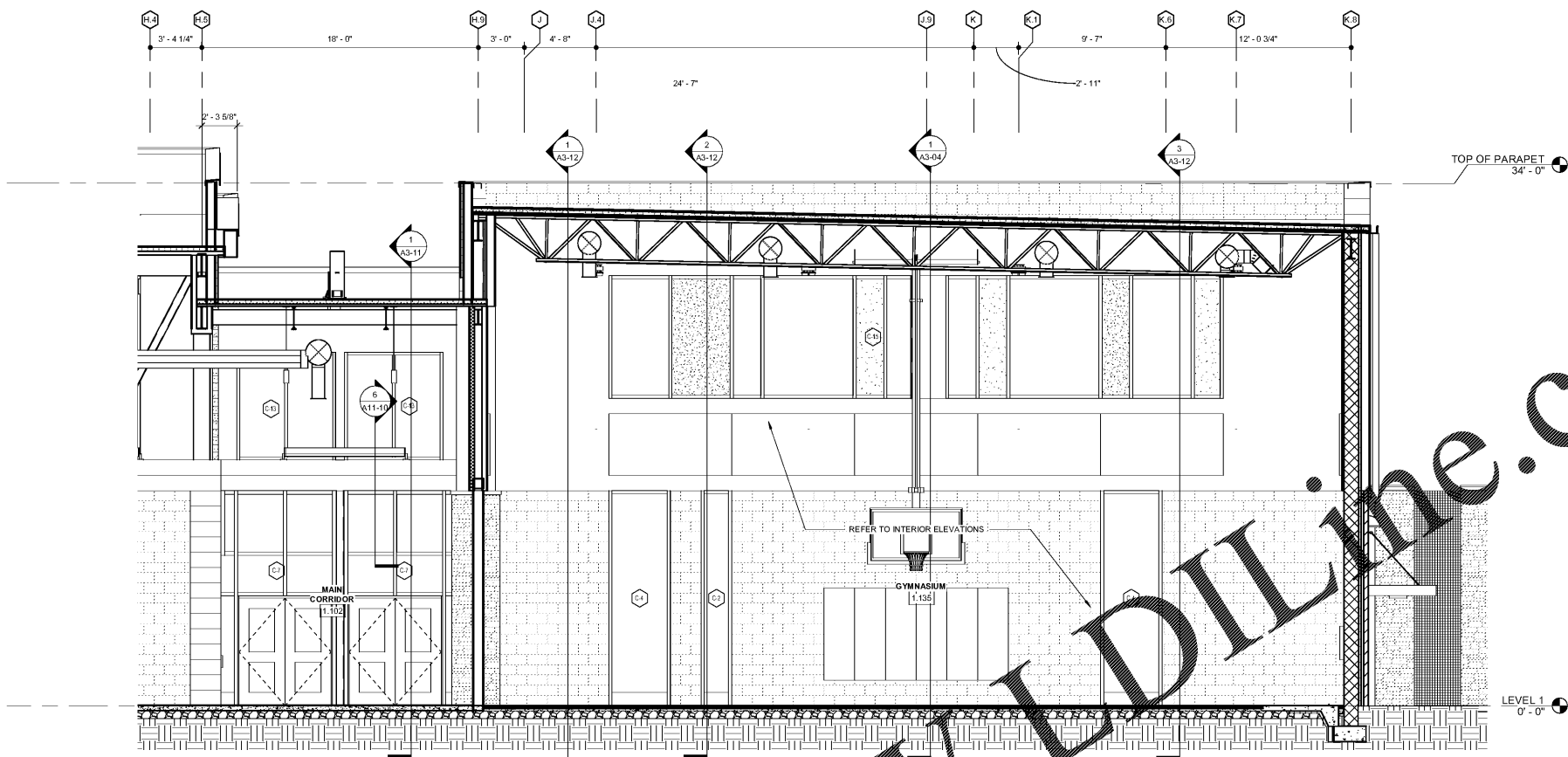


1 SECTION THRU GYMNASIUM - 1
A3-04 1/4" = 1'-0"



2 SECTION THRU GYMNASIUM
A3-04 1/4" = 1'-0"

REV. NO.	DATE	REMARKS
1	10/01/19	ISSUED FOR BID / PERMIT / CLOSE
2		
3		
4		
5		
6		
7		
8		
9		
10		
11		
12		
13		
14		
15		
16		
17		
18		
19		
20		
21		
22		
23		
24		
25		
26		
27		
28		
29		
30		
31		
32		
33		
34		
35		
36		
37		
38		
39		
40		
41		
42		
43		
44		
45		
46		
47		
48		
49		
50		
51		
52		
53		
54		
55		
56		
57		
58		
59		
60		
61		
62		
63		
64		
65		
66		
67		
68		
69		
70		
71		
72		
73		
74		
75		
76		
77		
78		
79		
80		
81		
82		
83		
84		
85		
86		
87		
88		
89		
90		
91		
92		
93		
94		
95		
96		
97		
98		
99		
100		

REVISIONS / PRINTED	REV. NO.	DATE	REMARKS
	46		
	47		
	48		
	49		
	50		
	51		
	52		
	53		
	54		
	55		
	56		
	57		
	58		
	59		
	60		
	61		
	62		
	63		
	64		
	65		
	66		
	67		
	68		
	69		
	70		
	71		
	72		
	73		
	74		
	75		
	76		
	77		
	78		
	79		
	80		
	81		
	82		
	83		
	84		
	85		
	86		
	87		
	88		
	89		
	90		
	91		
	92		
	93		
	94		
	95		
	96		
	97		
	98		
	99		
	100		

PROJECT SUMMARY	REVISIONS / PRINTED
ONE PIEDMONT CENTER, SUITE 303 3565 PIEDMONT ROAD ATLANTA, GEORGIA 30305	
J.H. HOUSE ELEMENTARY SCHOOL	
3100 ZINGIRA ROAD NE, CONYERS, GA 30012	
ISSUED FOR CONSTRUCTION	



STEWART & ASSOCIATES, INC.
REGISTERED PROFESSIONAL ARCHITECTS
1000 W. BROADWAY, SUITE 1000
ATLANTA, GEORGIA 30309
PHONE: 404.525.1234
WWW.STEWARTANDASSOCIATES.COM

DATE: 10-01-2019
JOB NO.: 218036.00
SHEET NO.: A3-04

SMALLWOOD, REYNOLDS, STEWART, STEWART & ASSOCIATES, INC. ARCHITECTS
BUILDING SECTIONS
J.H. HOUSE ELEMENTARY SCHOOL
3100 ZINGIRA ROAD NE, CONYERS, GA 30012
ISSUED FOR CONSTRUCTION