

GENERAL NOTES:
GUTTERS AND DOWNSPOUTS ARE TO MATCH EXT. MATERIAL 2 (DARK GRAY), UNLESS SPECIFIED OTHERWISE.

EXT. MATERIAL FINISH LEGEND	
1	LIGHT GRAY METAL FINISH
2	DARK GRAY METAL FINISH

REV. NO.	DATE	REVISIONS / PRINTED
1	10/01/13	ISSUE FOR PERMIT / ISSUE

INSTRUCTIONAL UNITS	
REGULAR CLASSROOMS	46
MUSIC	1
PHYSICAL EDUCATION	1
ART CENTER	1
TOTAL	51

BUILDING AREA	
LEVEL 01	71,193 SF
LEVEL 02	32,239 SF
TOTAL	103,432 SF



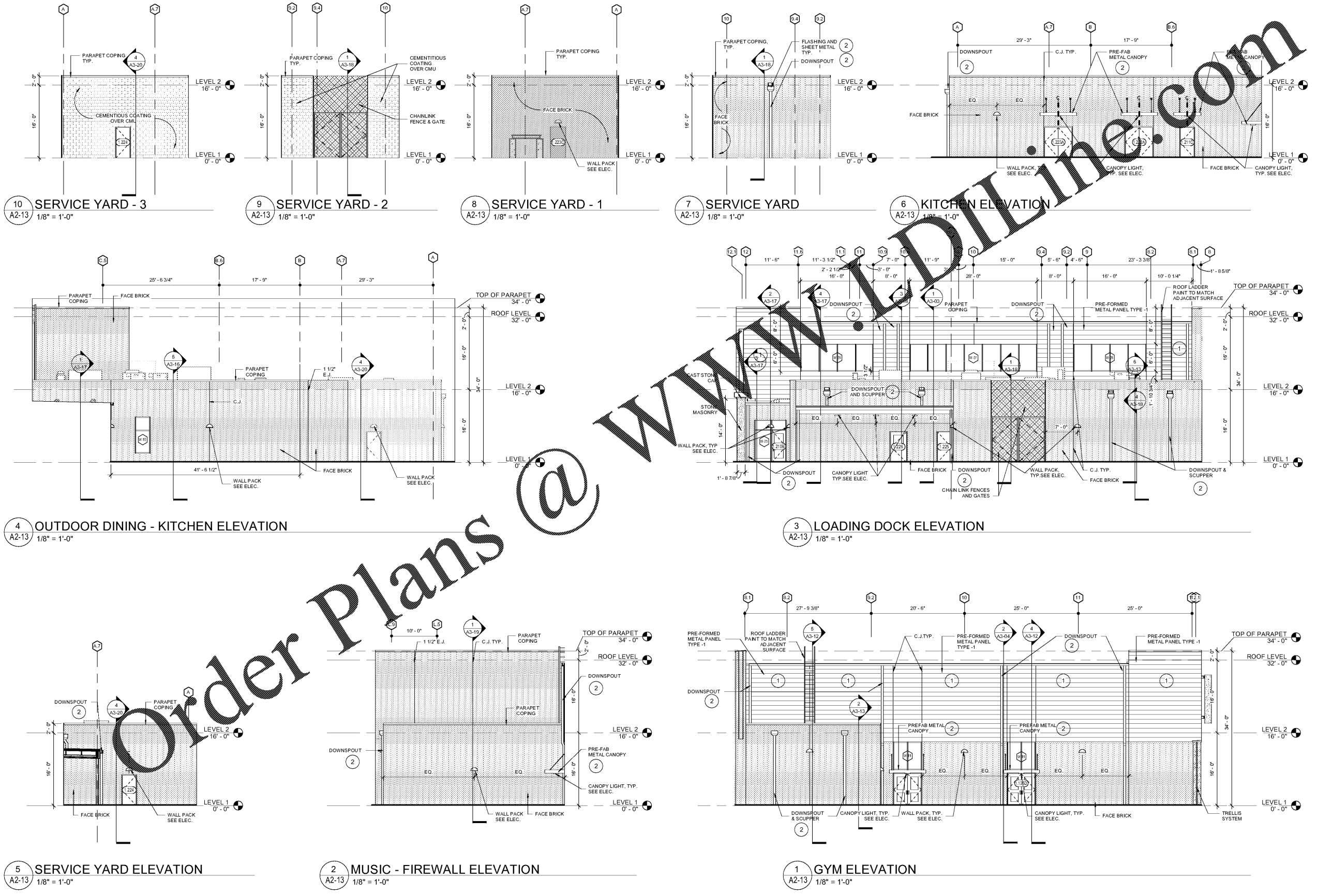
PROJECT SUMMARY
J.H. HOUSE ELEMENTARY SCHOOL
GRADE PRE-K THROUGH 5TH
P.T.E. 800
C.O.D. # 1 TO BE ASSIGNED

ENLARGED ELEVATIONS
J.H. HOUSE ELEMENTARY SCHOOL
3100 Zingira Road NE, Conyers, GA 30012

DATE	10-01-2019
JOB NO.	218036.00
SHEET NO.	A2-13

ISSUED FOR CONSTRUCTION

Smallwood, Reynolds, Stewart & Associates, Inc. Architects
One Piedmont Center, Suite 303 3565 Piedmont Road Atlanta, Georgia 30305



Order Plans @

WWW.DIPLINE.COM