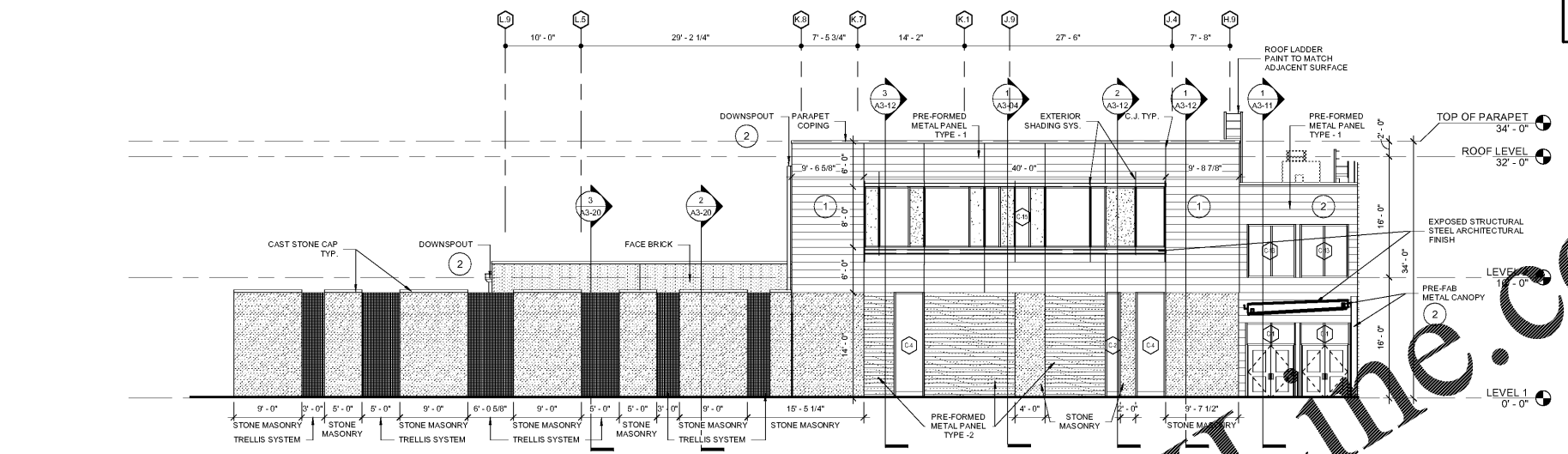
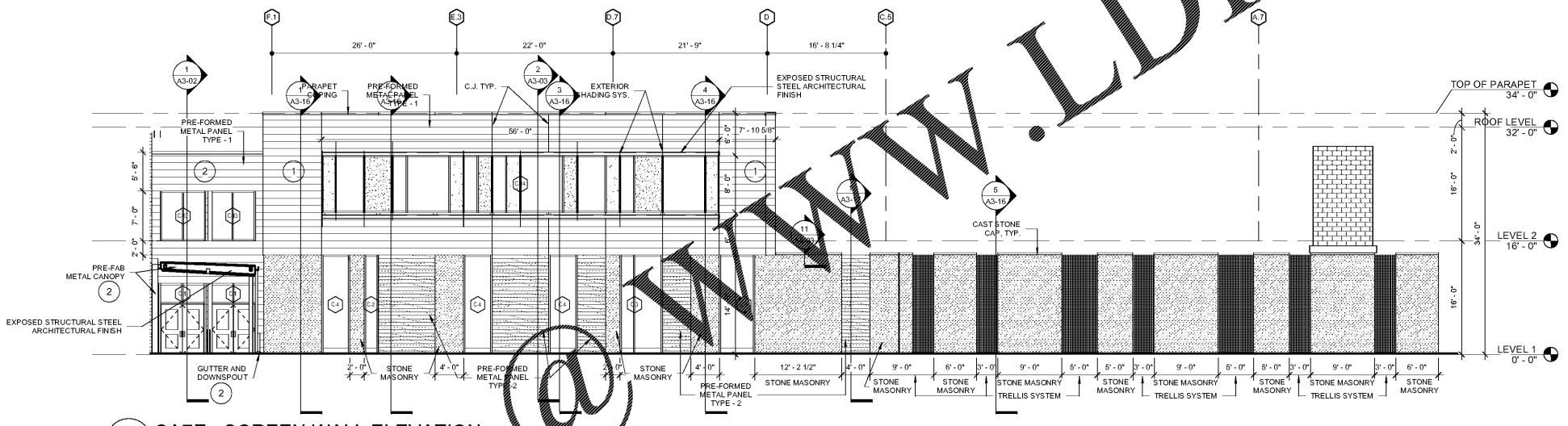


GENERAL NOTES:
GUTTERS AND DOWNSPOUTS ARE TO MATCH EXT. MATERIAL 2 (DARK GRAY), UNLESS SPECIFIED OTHERWISE.

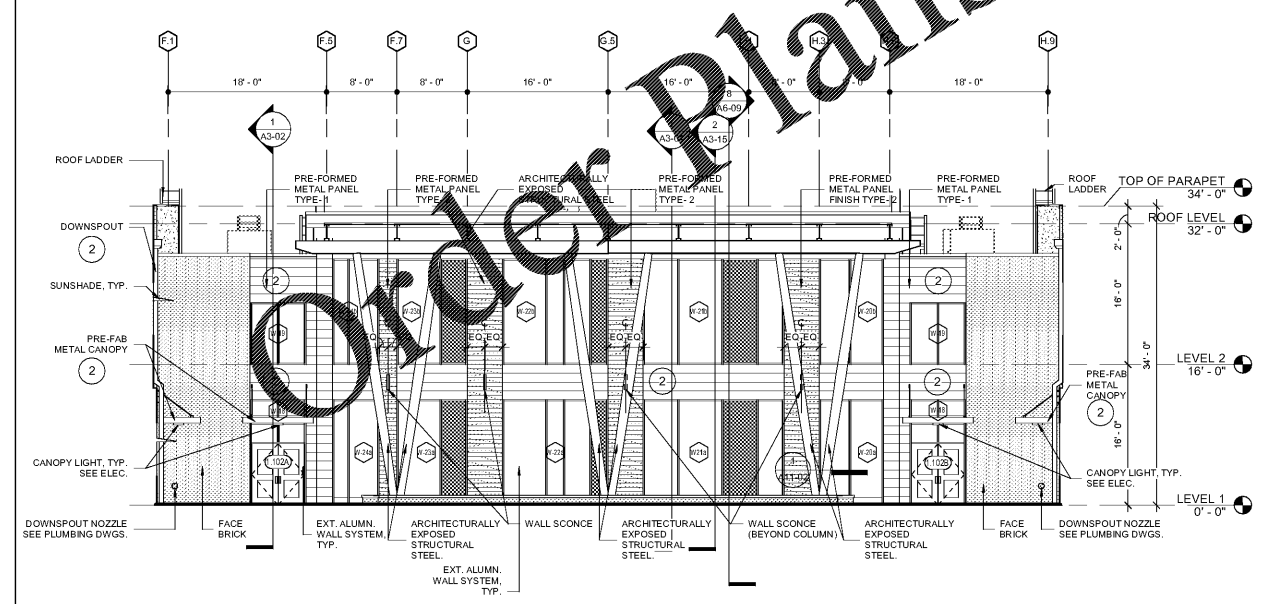
EXT. MATERIAL FINISH LEGEND	
1	LIGHT GRAY METAL FINISH
2	DARK GRAY METAL FINISH



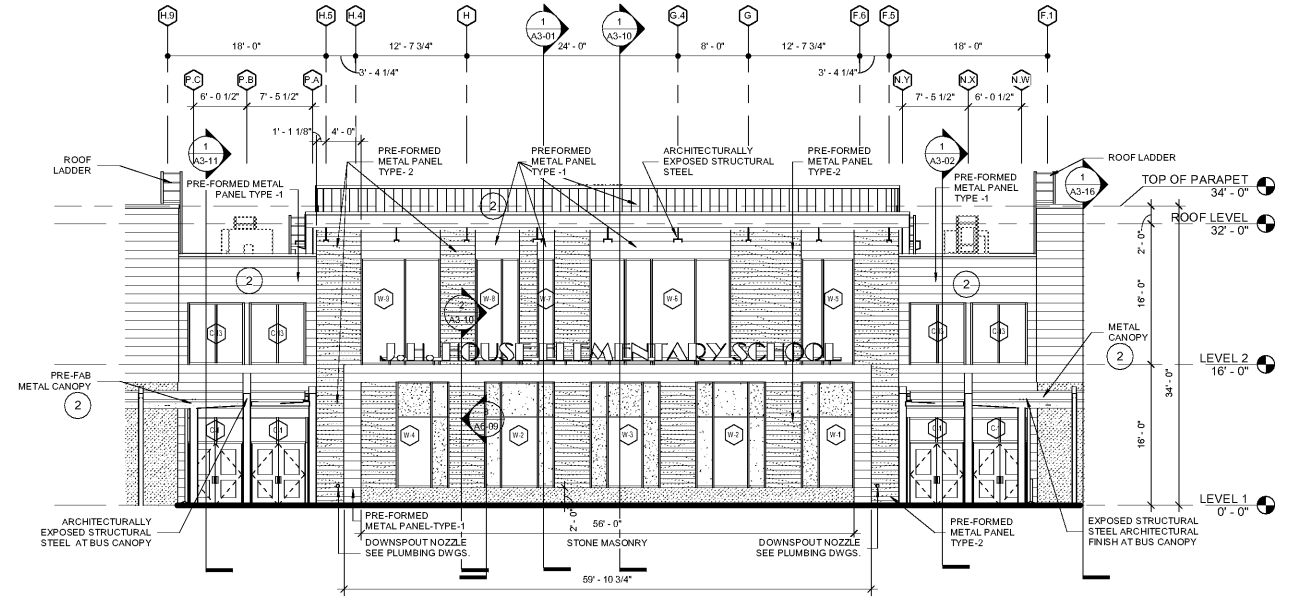
4 GYM-SCREEN WALL ELEVATION
A2-12 1/8" = 1'-0"



3 CAFE - SCREEN WALL ELEVATION
A2-12 1/8" = 1'-0"



2 MEDIA CENTER ELEVATION
A2-12 1/8" = 1'-0"



1 FRONT ENTRY ELEVATION
A2-12 1/8" = 1'-0"

Smallwood, Reynolds, Stewart & Associates, Inc. Architects

One Piedmont Center, Suite 303 3565 Piedmont Road Atlanta, Georgia 30305

ENLARGED ELEVATIONS

J.H. HOUSE ELEMENTARY SCHOOL
3100 Zingira Road NE, Conyers, GA 30012

DATE: 10-01-2019
JOB NO.: 218036.00
SHEET NO.: A2-12

REV. NO.	DATE	REMARKS
0001	10/01/19	ISSUED FOR BIDDING
0002	10/01/19	ISSUED FOR PERMIT
0003	10/01/19	PROGRESS PRINT
0004	10/01/19	PROGRESS PRINT

REVISIONS / PRINTED	
46	81
47	81
48	81
49	81
50	81
51	81
52	81
53	81
54	81
55	81
56	81
57	81
58	81
59	81
60	81
61	81
62	81
63	81
64	81
65	81
66	81
67	81
68	81
69	81
70	81
71	81
72	81
73	81
74	81
75	81
76	81
77	81
78	81
79	81
80	81
81	81

INSTRUCTIONAL UNITS	
REGULAR CLASSROOMS	71,143 SF
REGULAR CLASSROOMS	3,238 SF
MUSIC	106,831 SF
PHYSICAL EDUCATION	5,188 SF
ART CENTER	5,188 SF
TOTAL	192,588 SF

BUILDING AREA	
LEVEL 01	71,143 SF
LEVEL 02	3,238 SF
TOTAL	106,831 SF

COVERED AREAS (IE CANOPIES)	
COVERED AREAS	5,188 SF
COVERED AREAS (BY 2)	5,188 SF
TOTAL	10,376 SF

PROJECT SUMMARY: J.H. HOUSE ELEMENTARY SCHOOL, GRADES PRE-K THROUGH 5TH, P.T.E. 800, G.O.D.E.# 10 TO BE ASSIGNED

RCPS

STATE OF GEORGIA

REGISTERED PROFESSIONAL ARCHITECT

SMALLWOOD, REYNOLDS, STEWART & ASSOCIATES, INC.

REGISTERED PROFESSIONAL ARCHITECT

ISSUED FOR CONSTRUCTION