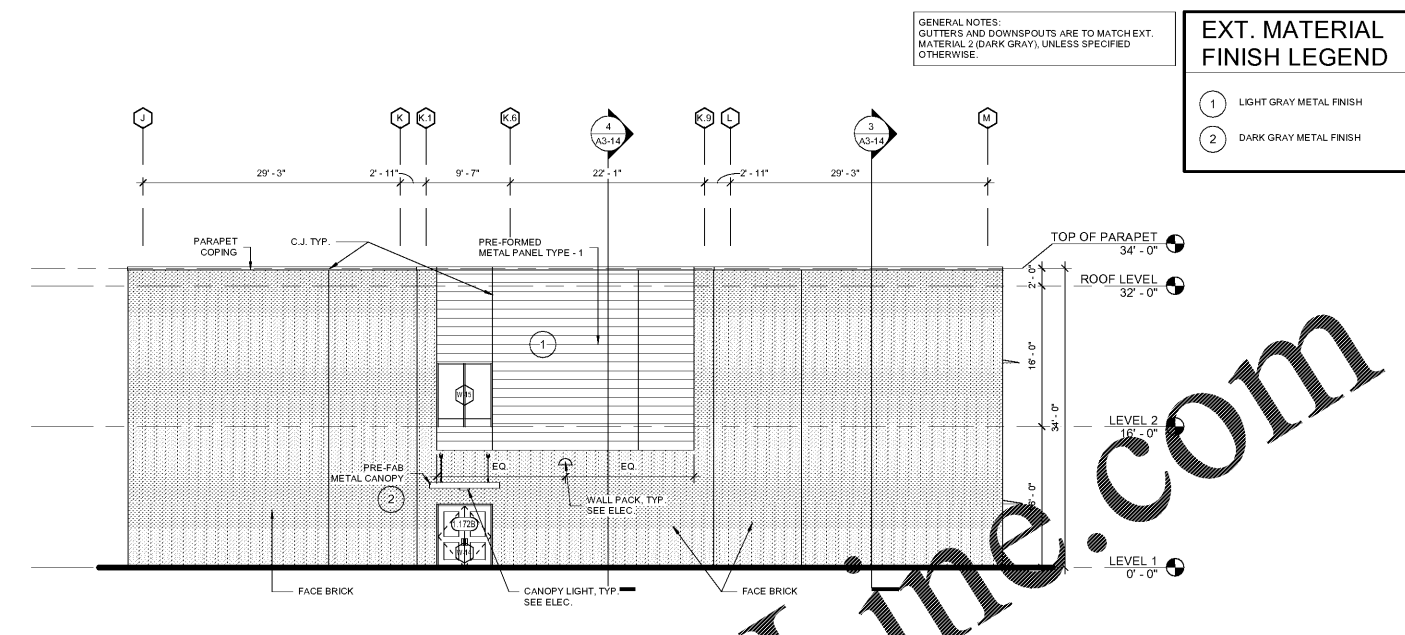
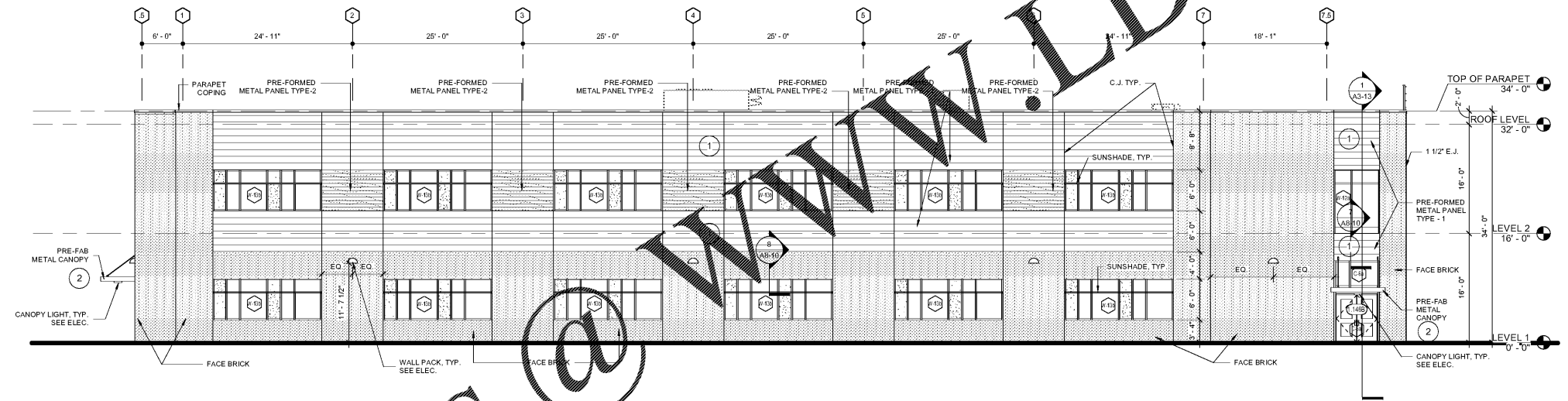


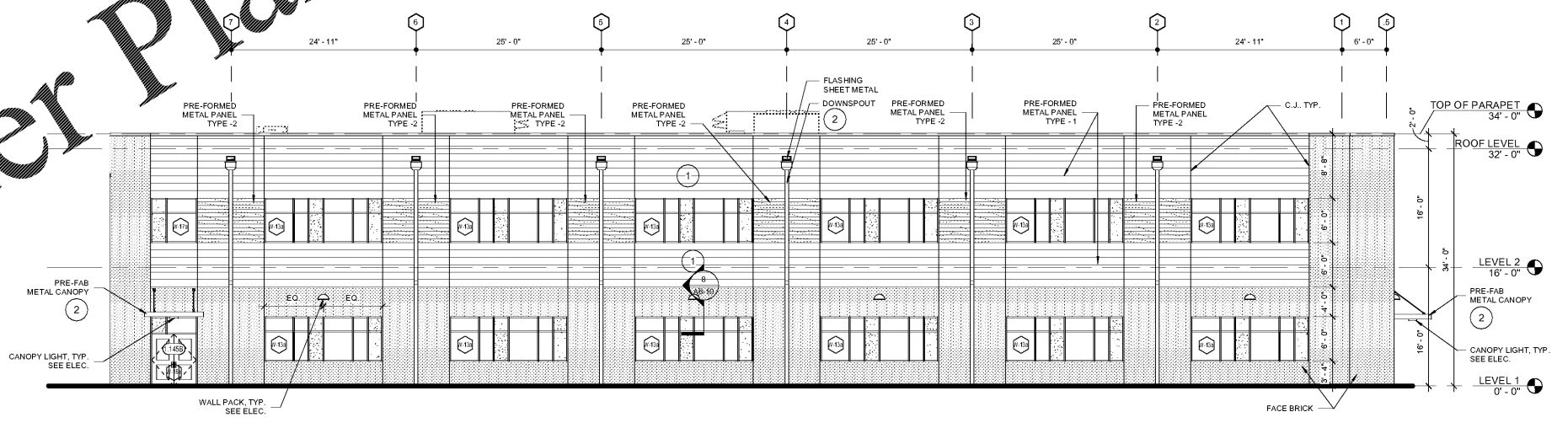
Order Plans @



3 WEST ELEVATION - CLASSROOM WING - SOUTH SIDE
A2-11 1/8" = 1'-0"



2 SOUTH ELEVATION - CLASSROOM WING
A2-11 1/8" = 1'-0"



1 CLASSROOM WING - COURTYARD SIDE - NORTH ELEVATION
A2-11 1/8" = 1'-0"

GENERAL NOTES:
GUTTERS AND DOWNSPOUTS ARE TO MATCH EXT. MATERIAL 2 (DARK GRAY), UNLESS SPECIFIED OTHERWISE.

EXT. MATERIAL FINISH LEGEND	
1	LIGHT GRAY METAL FINISH
2	DARK GRAY METAL FINISH

Smallwood, Reynolds, Stewart & Associates, Inc. Architects

ENLARGED ELEVATIONS

J.H. HOUSE ELEMENTARY SCHOOL
3100 Zingira Road NE, Conyers, GA 30012

DATE: 10-01-2019
JOB NO.: 218036.00
SHEET NO.: A2-11

ISSUED FOR CONSTRUCTION

REV. NO.	DATE	REMARKS
01	10/01/19	ISSUED FOR PERMIT
02	07/28/19	PROGRESS PRINT
03	07/28/19	PROGRESS PRINT

INSTRUCTIONAL UNIT	REGULAR CLASSROOMS	REGULAR FLEX-AREAS	MUSIC	PHYSICAL EDUCATION	ART CENTER	ART	TOTAL
45	71,152 SF	32,238 SF	106,631 SF	5,188 SF	5,188 SF	2,255 SF	118,052 SF
TOTAL	71,152 SF	32,238 SF	106,631 SF	5,188 SF	5,188 SF	2,255 SF	118,052 SF

PROJECT SUMMARY: J.H. HOUSE ELEMENTARY SCHOOL, GRADES PRE-K THROUGH 5TH, P.T.E. 800, C.D.O. # TO BE ASSIGNED

RCPS

STATE OF GEORGIA
DEPARTMENT OF EDUCATION
OFFICE OF GENERAL SERVICES