

REV. NO.	DATE	REMARKS
04/05/13		QISE PRELIMINARY
05/03/13		PROGRESS PRINT
07/28/13		PROGRESS PRINT
08/16/13		QISE CHECK SET
09/03/13		ISSUE FOR PERMIT
09/03/13		PERMIT QISE

INSTRUCTIONAL UNITS	REGULAR CLASSROOMS	REGULAR FLEX-AREAS	MUSIC	PHYSICAL EDUCATION	ART CENTER	ART	TOTAL
45	71,153 SF	32,238 SF	106,391 SF				209,782 SF
4							4,186 SF
1							2,253 SF
81							216,221 SF

PROJECT SUMMARY	REGULAR CLASSROOMS	REGULAR FLEX-AREAS	MUSIC	PHYSICAL EDUCATION	ART CENTER	ART	TOTAL
71,153 SF	32,238 SF	106,391 SF					209,782 SF
4,186 SF							4,186 SF
2,253 SF							2,253 SF
216,221 SF							216,221 SF

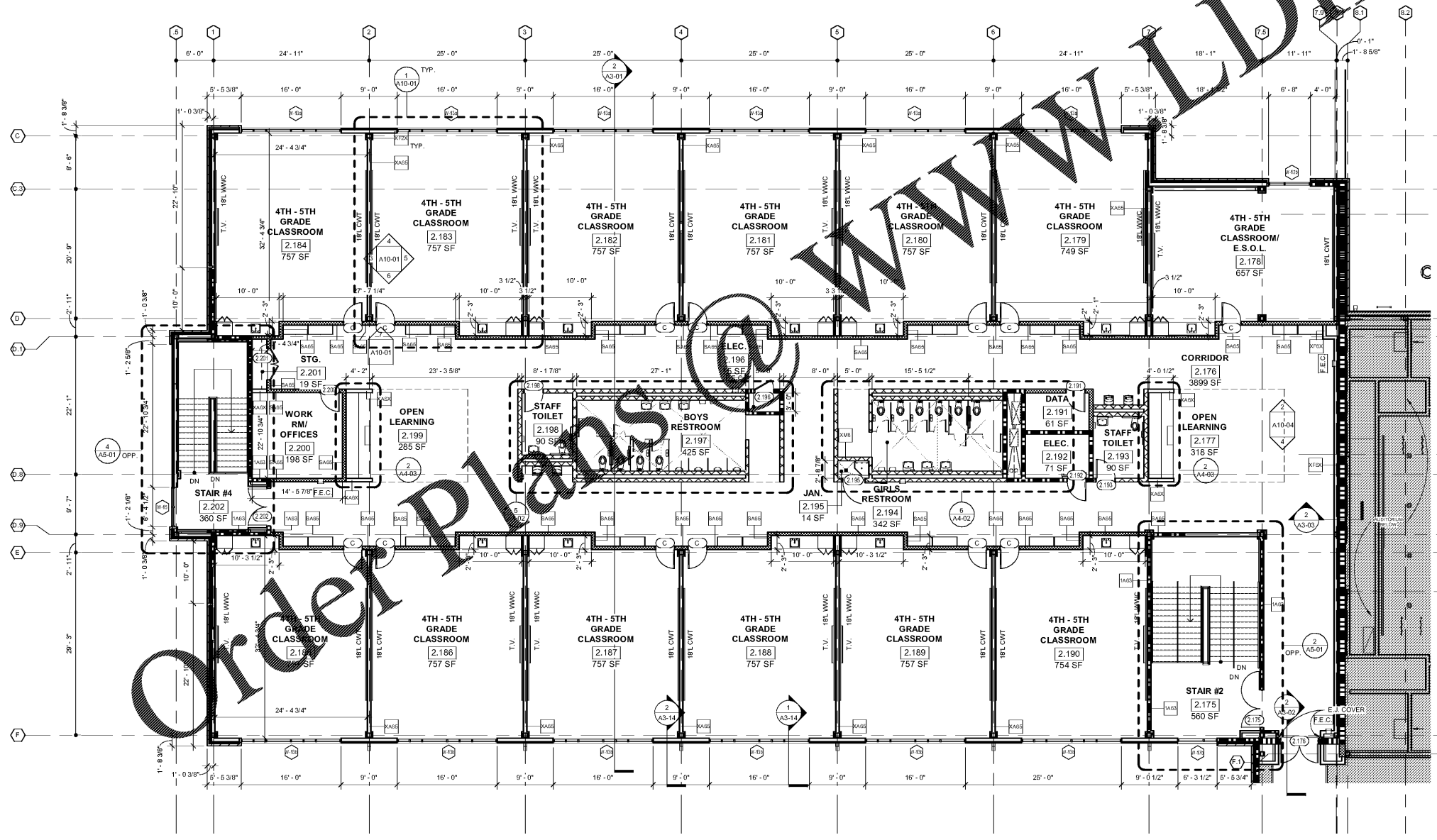


DAVID L. REYNOLDS
 PROFESSIONAL ENGINEER
 LICENSE NO. 10000
 STATE OF GEORGIA

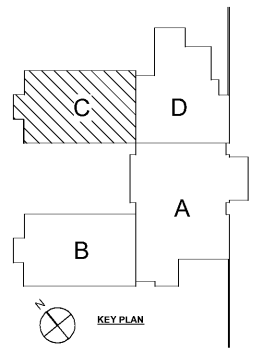
LEVEL 02 PART C
 J.H. HOUSE ELEMENTARY SCHOOL
 3100 Zingira Road NE, Conyers, GA 30012

DATE: 10-01-2019
 JOB NO.: 218036.00
 SHEET NO.: A1-02.C
 ISSUED FOR CONSTRUCTION

Smallwood, Reynolds, Stewart & Associates, Inc. Architects | One Piedmont Center, Suite 303 3565 Piedmont Road Atlanta, Georgia 30305



RATED WALLS LEGEND	
[Symbol: Dashed lines]	ONE HOUR RATED FIRE BARRIER
[Symbol: Solid lines]	TWO HOUR RATED FIRE BARRIER
[Symbol: Thick solid lines]	THREE HOUR RATED FIRE BARRIER
[Symbol: Stippled area]	SMOKE PARTITION



1 LEVEL 02 - PART C
 1/8" = 1'-0"

WWW.DILine.com

Order Plans