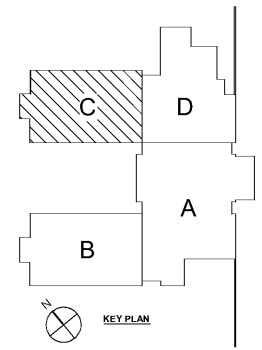


1 LEVEL 01 - PART C
A1-01.C 1/8" = 1'-0"

RATED WALLS LEGEND	
	ONE HOUR RATED FIRE BARRIER
	TWO HOUR RATED FIRE BARRIER
	THREE HOUR RATED FIRE BARRIER
	SMOKE PARTITION



REV. NO.	DATE	REMARKS
04/05/13		SCHE PRELIMINARY
05/03/13		PROGRESS PRINT
07/28/13		PROGRESS PRINT
08/16/13		SCHE CHECK SET
09/01/13		ISSUE FOR PERMIT
		PERMIT SCHE

INSTRUCTIONAL UNITS	
REGULAR CLASSROOMS	71,152 SF
REGULAR CLASSROOMS	32,238 SF
MUSIC	106,631 SF
PHYSICAL EDUCATION	
ART CENTER	
ART	5,186 SF
TOTAL	2,255 SF

PROJECT SUMMARY	
PROJECT NAME	J.H. HOUSE ELEMENTARY SCHOOL
OWNER	DEKALB COUNTY SCHOOLS
DESIGNER	SMALLWOOD, REYNOLDS, STEWART & ASSOCIATES, INC.
DATE	10-01-2019



SMALLWOOD, REYNOLDS, STEWART & ASSOCIATES, INC.
REGISTERED PROFESSIONAL ARCHITECTS
1000 W. BUCKLEBOURNE DRIVE, SUITE 100
ALPHARETTA, GA 30005
PH: 770-241-1111
WWW.SMALLWOOD-REYNOLDS-STEWARD.COM

LEVEL 01 PART C
J.H. HOUSE ELEMENTARY SCHOOL
3100 Zingira Road NE, Conyers, GA 30012

DATE	10-01-2019
JOB NO.	218036.00
SHEET NO.	A1-01.C

ISSUED FOR CONSTRUCTION

Smallwood, Reynolds, Stewart & Associates, Inc. Architects

One Piedmont Center, Suite 303 3565 Piedmont Road Atlanta, Georgia 30305