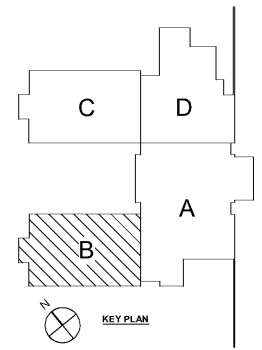


1 LEVEL 01 - PART B  
A1-01.B 1/8" = 1'-0"

	ONE HOUR RATED FIRE BARRIER
	TWO HOUR RATED FIRE BARRIER
	THREE HOUR RATED FIRE BARRIER
	SMOKE PARTITION



Smallwood, Reynolds, Stewart & Associates, Inc. Architects

One Piedmont Center, Suite 303 3565 Piedmont Road Atlanta, Georgia 30305

**LEVEL 01 PART B**

**J.H. HOUSE ELEMENTARY SCHOOL**  
3100 Zingira Road NE, Conyers, GA 30012

DATE: 10-01-2019  
JOB NO.: 218036.00  
SHEET NO.: A1-01.B

ISSUED FOR CONSTRUCTION

REV. NO.	DATE	REMARKS
04/05/19		SCHE PRELIMINARY
05/03/19		PROGRESS PRINT
07/28/19		PROGRESS PRINT
08/16/19		SCHE CHECK SET
09/01/19		ISSUE FOR PERMIT
		PERMIT SCHE

INSTRUCTIONAL UNITS	
REGULAR CLASSROOMS	71,150 SF
MUSIC	32,230 SF
PHYSICAL EDUCATION	106,631 SF
ART CENTER	5,186 SF
<b>TOTAL</b>	<b>215,197 SF</b>

BUILDING AREA	
LEVEL 01	71,150 SF
TOTAL	215,197 SF

COVERED AREAS (I.E. CANOPIES)	
COVERED AREAS	5,186 SF
TOTAL	215,197 SF

PROJECT SUMMARY: J.H. HOUSE ELEMENTARY SCHOOL, GRADES PRE-K THROUGH 5TH, P.T.E. 800, C.D.O. # 1 TO BE ASSIGNED

RCPS

STATE OF GEORGIA

REGISTERED ARCHITECT