



PHILLIPS

CONSULTANT

SEAL

ISSUE & REVISION RECORD

This document is © Phillips Partnership, P.C. and is considered an instrument of Service and is solely for use with respect to the project as indicated herein. All rights reserved. This document may not be reproduced without the prior written consent of Phillips Partnership, P.C.

PROJECT

Hilton Garden Inn
CURRENT VERSION

MALL OF GEORGIA

NEW CONSTRUCTION
4 STORIES-116 GUESTROOMS

CURRENT CODE

CONSTRUCTION TYPE 1

CONSTRUCTION TYPE 2

Hilton Garden Inn Ariston,
Mall of Georgia, Buford,
GA

CLIENT



PHILLIPS JOB NUMBER 1903613

ISSUE DATE 08-07-19

DRAWN BY/CHECKED BY Author / Checker

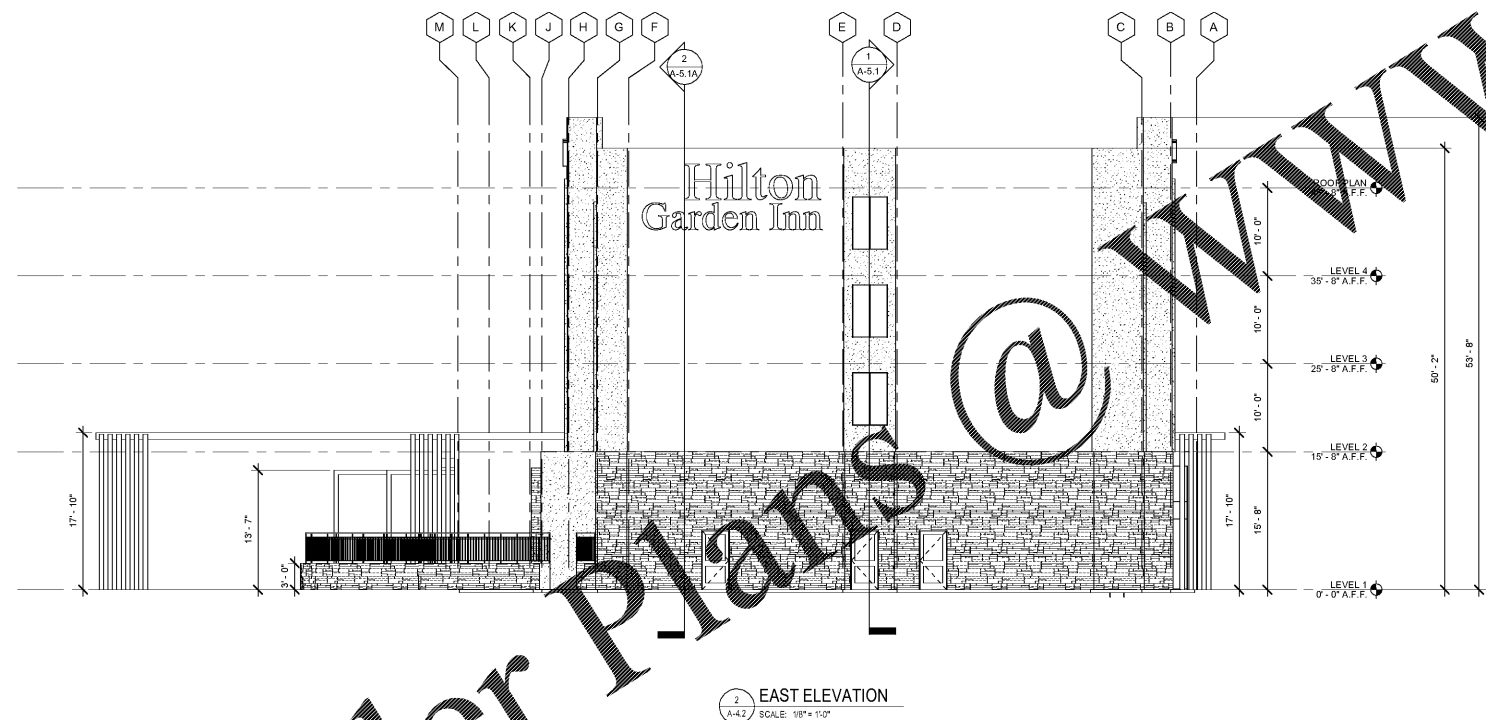
DRAWING TITLE
EXTERIOR ELEVATION
SOUTH/EAST

SHEET NUMBER

A-4.2

5901 PEACHTREE DUNWOODY RD.
BUILDING A, SUITE 450
ATLANTA, GEORGIA 30328

PHILLIPSPART.COM 770-394-1616



- GENERAL NOTES**
- REF. DOOR AND WINDOW SCHEDULES, SHEET A-8.1 & A-8.3, FOR ADDITIONAL INFORMATION.
 - ALL ROOF MOUNTED ITEMS TO BE PRE-FINISHED OR PAINTED TO MATCH ROOF MATERIAL.
 - EIFS COLORS ARE INTEGRAL IN THE FINISH AND SHALL NOT BE A PAINTED FINISH.
 - EIFS TO BE MOISTURE DRAINABLE TYPE. PROVIDE EIFS & STONE CONTROL JOINT PER MANUFACTURE RECOMMENDATIONS.
 - VERIFY LOCATION OF ALL LOUVERS, VENTS, ROOF DRAIN & OVERFLOW DRAIN DISCHARGE NOZZLES, & MECH EXHAUST W/ MEP DWGS.
 - IMPACT/ABUSE RESISTANT FINISH TO BE PROVIDED FROM GRADE TO LEVEL 2 FLOOR ELEVATION. (UP TO MIN. 8' ABOVE ADJ. GRADE/SIDEWALK). REF. PROJECT SPECIFICATIONS.
 - CONTRACTOR SHALL PROVIDE SAMPLES OF ALL EXTERIOR MATERIALS, COLORS AND FINISHES FOR APPROVAL TO OWNER, ARCHITECT, FRANCHISE, AND LOCAL JURISDICTION (AS APPLICABLE) FOR APPROVAL BY ALL PARTIES PRIOR TO START OF WORK.
 - PROVIDE KNOX BOX AT THE FRONT DOOR, AND BY FIRE COMMAND ENTRANCE COORD. EXACT LOCATION & REQUIREMENTS W/ LOCAL AUTHORITY JURISDICTION PRIOR TO START OF WORK.
 - ALL LOUVERS AND PENETRATIONS SHALL BE LOCATED ENTIRELY WITHIN EIFS BANDS OR ENTIRELY OUTSIDE OF BANDS.
 - OWNER'S SIGN CONTRACTOR SHALL BE RESPONSIBLE FOR DESIGN, DOCUMENTS, PERMITS/ APPROVALS FOR ALL EXTERIOR SIGNAGE. GC TO COORDINATE AND VERIFY BACKING REQUIREMENTS AND EXACT SIGN LOCATIONS PRIOR TO START OF WORK.
 - EIFS TO TERMINATE PER MANUFACTURER'S RECOMMENDATIONS ABOVE SLAB ON GRADE. INSTALL STRIP WITH HOLES ON BOTTOM FOR DRAINAGE

- EXTERIOR LIGHTING NOTES & REQUIREMENTS**
- ALL LIGHTING SHALL CAST DOWN, NOT UP OR OUT.
 - LIGHT SOURCES SHALL NOT BE VISIBLE.
 - MAX HEIGHT OF LIGHTING IS 25'-0\".
 - LIGHTING OF BUILDING FACES IS NOT PERMITTED PER CCODG.
 - ALL OUTDOOR LIGHTING FIXTURES SHALL COMPLY WITH THE CBC AND OR CITY OF BUFORD SHIELDING AND FILTERING OF OUTDOOR LIGHTING.
 - ALL LIGHTING TO BE SHIELDED TO PREVENT DIRECT VISIBILITY OF THE LIGHT SOURCE ADJACENT PROPERTIES.
 - SHIELD AS REQUIRED WITH CUT-OFF FIXTURES AND DEFLECTORS TO DIRECT LIGHT DOWNWARD.
 - ALL LIGHTING FIXTURE TO BE OF SIMILAR DESIGN AND CHARACTER AS THE COMPONENTS OF THE BUILDING.

GRAPHIC	KEY	EXTERIOR FINISH
	STONE S-1	MANUF: CORONADO PRODUCT: CULTURED STONE STYLE: SAWTOOTH LEDGE COLOR: MOUNT VERNON
	EIFS E-1	MANUF: PAREX OR EQUAL PRODUCT: CERASTONE STYLE: STONE COLOR: ASH
	EIFS E-2	MANUF: PAREX OR EQUAL PRODUCT: TUFFSTONE GRANITE STYLE: STONE COLOR: PENISULA
	EIFS E-T1	MANUF: PAREX OR EQUAL STYLE: VARIANCE FINISH SMOOTH COLOR: ALLOY 208
	FX WOOD W-1	MANUF: DASSO XTR STYLE: RAINGLAD SIDING COLOR: FUSED BAMBOO
	FINISH A-1	MANUF: ALUCABOND METAL PANEL OR EQUAL COLOR: CLEAR ANODIZED
	FINISH F-1	PRE-FINISHED DARK BRONZE ANODIZED.
	FINISH F-1	DARK BRONZE ANODIZED ALUMINUM
	FINISH F-1	PAINT EXTERIOR FACE OF DOOR & FRAME TO MATCH COLOR OF ADJACENT EXTERIOR WALL FINISH
	PAINT PT-2	PAINT EXTERIOR FACE OF DOOR & FRAME TO MATCH COLOR OF ADJACENT EXTERIOR WALL FINISH

Order Plans @

WWW.LDILLINE.COM