

PHILLIPS

CONSULTANT \_\_\_\_\_

SEAL \_\_\_\_\_

ISSUE & REVISION RECORD \_\_\_\_\_

This document is the property of Phillips Partnership, P.C. and is considered an instrument of service and is loaned for use with respect to the project as indicated herein. All rights reserved. This document may not be reproduced without the prior written consent of Phillips Partnership, P.C.

PROJECT \_\_\_\_\_

**Hilton Garden Inn**  
CURRENT VERSION

**MALL OF GEORGIA**

NEW CONSTRUCTION  
4 STORIES-116 GUESTROOMS

CURRENT CODE

CONSTRUCTION TYPE 1

CONSTRUCTION TYPE 2

**Hilton Garden Inn Ariston,  
Mall of Georgia, Buford,  
GA**

CLIENT \_\_\_\_\_



PHILLIPS JOB NUMBER 1963613

ISSUE DATE 08-07-19

DRAWN BY/CHECKED BY \_\_\_\_\_ Author / Checker

DRAWING TITLE

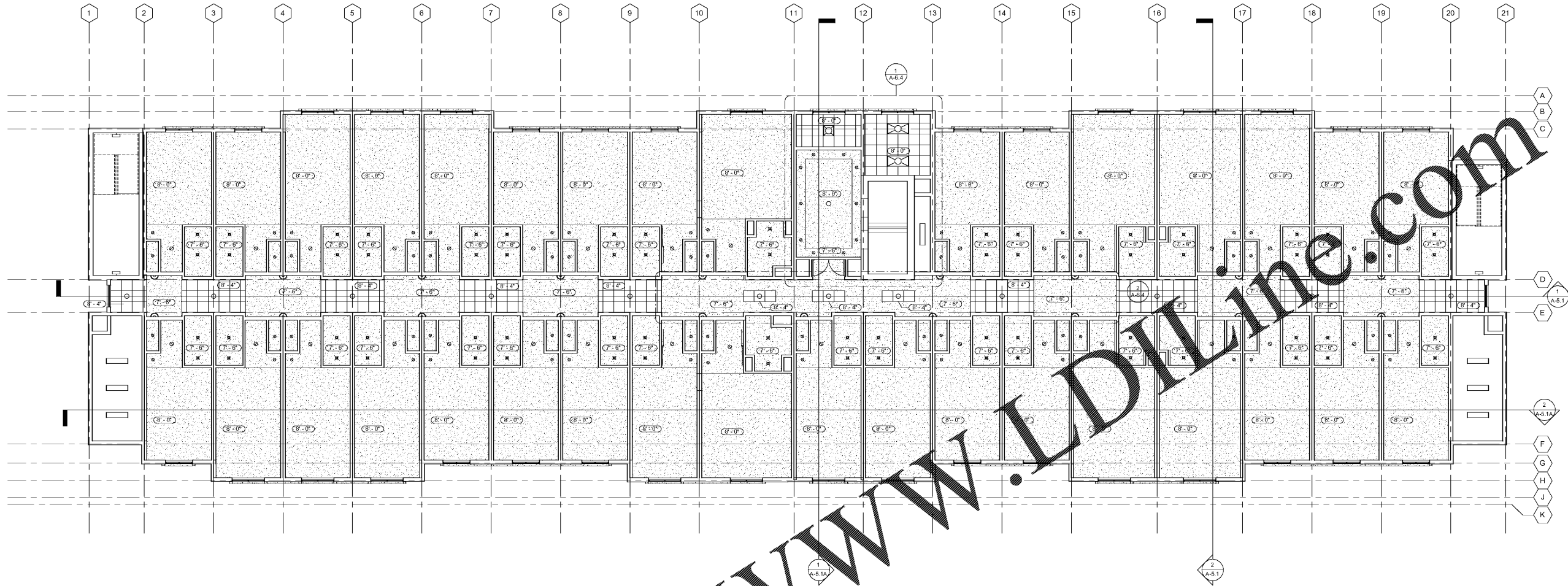
**REFLECTED CEILING  
PLAN- LEVEL 2-3**

SHEET NUMBER \_\_\_\_\_

**A-3.2**

5901 PEACHTREE DUNWOODY RD.  
BUILDING A, SUITE 450  
ATLANTA, GEORGIA 30328

PHILLIPSPART.COM 770-394-1616



1 LEVEL 2-3 REFLECTED CEILING PLANS  
SCALE: 1/8" = 1'-0"

REFER TO INTERIOR DOCUMENTS FOR CEILING "CLOUD" DIMENSIONS, FINISHES AND DECORATIVE LIGHTING FIXTURES

**RCP NOTES: LOBBY AREA**

- 1 EXTERIOR MATERIAL - REFER TO ELEVATIONS FINISH KEY
- 2 CONCEALED ROLL DOWN SHADE WITH FLUSH CLOSURE TO SPAN ENTIRE WIDTH OF WINDOW OR STOREFRONT OPENING - EXPOSED FACES OF CLOSURE & CLOSURE MOUNT PAINTED TO MATCH ADJACENT C.G. REFER TO ID DOCUMENTS. SEE INTERIOR DESIGNER FOR CEILING TREATMENT OVER STOREFRONT WINDOW
- 3 PRIME AND PAINTED TUBE STEEL OPEN CANOPY AREA WITH STAINED WOOD TRUSS INFILL - SYSTEM TO BE UPLIGHTED BY SCONCES ON TUBE STEEL STRUCTURE WITH SUPPLY POWER RUN IN CONCEALED CONDUIT.
- 4 VERTICAL THROW UPLIGHT @ STAIR TOWER
- 5 SPEAKER - FLUSH MOUNTED AT INTERIOR - SURFACE MOUNT AT EXTERIOR MOUNT AT CANOPY
- 6 LAUNDRY CHUTE, MECH. SHAFT & ELEVATOR
- 7 FOR MILLWORK REFER TO INTERIOR DESIGNER DOCUMENTS.
- 8 FOR CEILING MOUNTED DRAPERY ROD AND HEAVY DUTY CONCEALED DRAPERY TRACK, PROVIDE BLOCKING AT WALL AS REQ.
- 9 FOR LIGHTING AND MILLWORK AROUND SERVING AREA SEE INTERIOR DESIGNER DOCUMENTS
- 10 FOR WALL CABINETS PROVIDE BLOTTING AT SOFFIT AS REQ.
- 11 ALUM NUM COMMERCIAL SHIPAL SOFFIT WITH WOOD GRAIN TO MATCH FAUX WOOD WALL FINISH. LED INSET LIGHTING AND STRIP LIGHTING AT INTERIOR PERIMETER

**GENERAL NOTES:**

1. ALL RECESSED LIGHT FIXTURES, SPRINKLER HEADS AND PENDANT LIGHT FIXTURES IN THE CEILING TILE ARE CENTERED IN THE TILE UNLESS OTHERWISE NOTED
2. RECESSED LIGHT FIXTURES IN ENTRY VESTIBULE TO BE CENTERED ON DOOR AND SIDE LIGHT.
3. REFER TO FFBE PACKAGE FOR FURNITURE, BUILD-IN MILLWORK AND FINISH SPECIFICATIONS. FIXTURES PROVIDED IN FFBE PACKAGE TO BE INCLUDED IN CONTRACTOR'S INSTALLATION COST.
4. EMERGENCY LIGHTING AND ILLUMINATED "EXIT" SIGNS TO COMPLY WITH AND BE PROVIDED PER GOVERNING CODES, AHJ & FRANCHISE STANDARDS. REFER TO ELEC. DWGS. FOR TYPE AND LOCATIONS. EMERGENCY LIGHTS SHALL ALSO BE PROVIDED IN PUBLIC RESTROOMS.
5. REFER TO ELECTRICAL AND MECHANICAL DWGS FOR CEILING MOUNTED FIXTURES SCHEDULES, AND VERIFY LOCATIONS WITH ARCHITECTURAL AND INTERIOR DOCUMENTS.
6. ANY ELECTRICAL FIXTURE OR MECHANICAL DUCT THAT PENETRATES A RATED WALL OR CEILING ASSEMBLY MUST HAVE RATED FIXTURES AND FIRE DAMPERS TO MAINTAIN THE REQUIRED RATING
7. NON-RATED RECESSED ELECTRICAL FIXTURES WHICH PENETRATE A RATED WALL OR CEILING ASSEMBLY SHALL BE SURROUNDED BY A 1 HOUR FIRE RATED GYP/UM BD. RECESSED BOX ENCLOSURE.
8. VERIFY, COORDINATE AND INSTALL BLOCKING AS REQUIRED FOR ALL WALL AND CEILING MOUNTED FIXTURES.
9. LOCATE ALL PLUMBING SHUT-OFF VALVES ABOVE SUSPENDED ACOUSTIC TILE CEILING. (CEILING ACCESS PANELS REQUIRED AT GYP/UM BD. CEILING.
10. FIRE EXTINGUISHERS, SMOKE DETECTORS AND OTHER EMERGENCY DEVICES TO BE LOCATED PER LOCAL CODE.
11. SPRINKLER SYSTEM DESIGN BY SPRINKLER CONTRACTOR UNDER SEPARATE PERMIT. SPRINKLER CONTRACTOR TO COORDINATE LOCATIONS OF SPRINKLER HEADS AND WITH ALLOWABLE DISTANCE FROM CORRIDOR BULKHEADS, ELECTRICAL AND MECHANICAL FIXTURES. SPRINKLER HEADS SHALL NOT BE PLACED IN BULKHEADS. SPRINKLER HEADS IN CEILING IN PUBLIC AREAS TO BE CONCEALED. ALL OTHERS HEADS TO BE SEMI-RECESSED.
12. ANY PORTION OF A WALL SCONCE OR OTHER OBJECT THAT PROTRUDES INTO THE CIRCULATION PATH ABOVE 27" A.F.F. AND BELOW 80" A.F.F. IS LIMITED TO A 4" MAXIMUM PROJECTION.
13. MINIMUM HEIGHT OF ANY OCCUPIED SPACE IS 7'-0" A.F.F. INCLUDING CORRIDORS, BATHROOMS, KITCHENS, AND STORAGE ROOMS. LAUNDRY ROOMS HAVE A MINIMUM HEIGHT OF 7'-0" A.F.F.
14. PROVIDE EMERGENCY LIGHTING PER LOCAL CODE.
15. CENTER LINE OF WALL DEVICES TO BE MOUNTED AT 15" A.F.F. TYPICAL U.N.D.
16. REFER TO HILTON GARDEN INN FOR HILTON BRAND STANDARDS ADDITIONAL LIGHTING REQUIREMENTS

**RCP LEGEND:** SYMBOLS ARE NOT TO SCALE

- (D-1) DECORATIVE WALL SCONCE - REFER TO FFBE POK. FIXTURE TO PROTRUDE MAX. 4" FROM WALL.
- (D-2) DECORATIVE ROUND SUSPENDED LIGHT FIXTURE - REFER TO FFBE PACKAGE
- (D-3) DECORATIVE SQUARE SURFACE MOUNT LIGHT FIXTURE. REFER TO FFBE PACKAGE
- (R-1): RECESSED DOWNLIGHT
- (R-2): RECESSED WALL WASH
- (R-3): RECESSED DOWNLIGHT W/ LENS (FLUORESCENT LAMP) - UL WET LABEL
- (R-4): SMALL RECESSED DOWNLIGHT (HALOGEN LAMP) NARROW BEAM SPREAD
- (R-5): SURFACE MOUNTED FIXTURE
- (R-6): EXT. RECESSED DOWNLIGHT WALL WASHER - (UL WET LABEL)
- (T-1): 2X2 LAY-IN FLUORESCENT FIXTURE
- (T-2): 2X4 LAY-IN FLUOR. FIXTURE
- (T-3): 1X4 SURFACE MOUNTED FLUORESCENT FIXTURE
- (C-1): RECESSED FLUORESCENT COVE FIXTURE - 4FT
- (W-1): WALL MOUNTED STRIP LIGHT - 4FT
- (S-1): WALL SCONCE @ POOL AREA (UL WET LABEL)
- (S-2): WALL SCONCE @ REAR ENTRY (UL WET LABEL)
- (S-3): EXTERIOR SCONCE (UPLIGHT)
- (S-4): EXTERIOR SCONCE (UPLIGHT)
- (S-5): EXTERIOR FLOODLIGHT
- (S-6): EXTERIOR SCONCE DOWNLIGHT
- (G-1): EXTERIOR HEAVY DUTY LIGHT STRING
- VEE CONTROL JOINT
- (P-3) IN-GROUND UPLIGHT
- \* PROVIDE EMERGENCY LIGHTING AS REQUIRED BY LOCAL CODE

Order Plans @ WWW.IDDLINE.COM