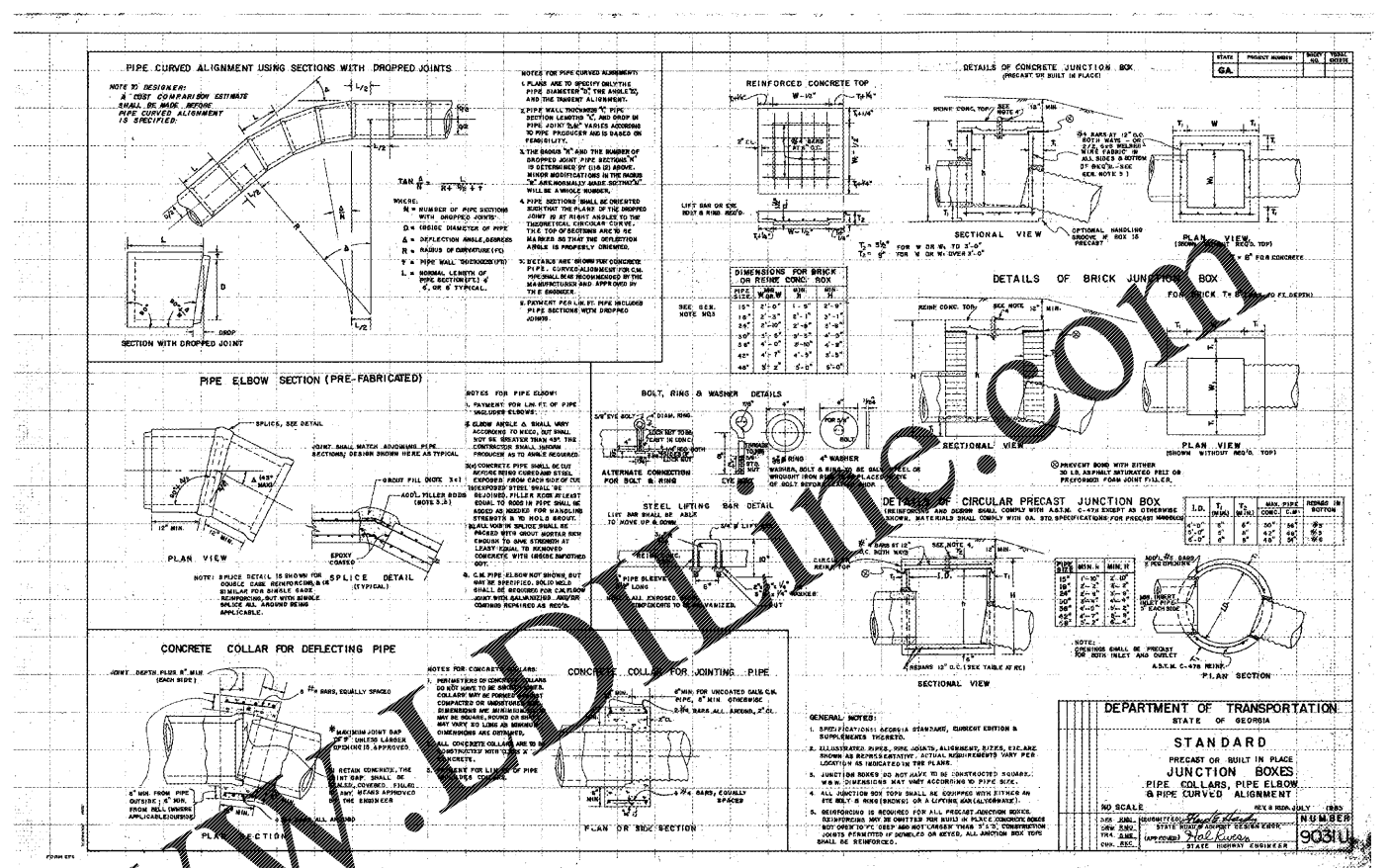


1 STANDARD DROP INLET WITH HOOD NTS



2 JUNCTION BOX NTS

1/24/2018 Neenah Foundry | Heavy Duty

**TRENCH CASTINGS: HEAVY DUTY**

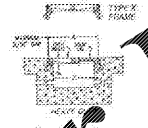
Neenah Foundry offers a variety of heavy duty cast iron trench castings. Select from the list below to find the trench castings that fit your needs.

R-4990 and R-4999 Series

**R-4990 and R-4999 Series**

**Heavy Duty Trench**

Materials: All frames and grates/rids are furnished standard in ductile iron, except 30" for heavy-duty use. For extra heavy-duty use or superior durability requirements, see the Alloycast and Boost Series and our R-4993X & R-4994X series.



These trench castings are furnished in 24" standard lengths. When ordered in lengths other than 24", the length will be rounded up to the next 24" length. The ends of the trench castings are finished with chamfered edges. The ends of the trench castings are finished with chamfered edges. The ends of the trench castings are finished with chamfered edges.

Un-bolted Catalog No.	Bolted Catalog No.	A	B	C	Type A	Type C	Type D	Type E	Type P	Type Q
R-4990-AX	R-4999-AX	8	1-1/2	6	x	x	x	x	x	x
R-4990-BX	R-4999-BX	10	1-1/2	8	x	x	x	x	x	x
R-4990-CX	R-4999-CX	12	1-1/2	10	x	x	x	x	x	x
R-4990-DX	R-4999-DX	14	1-1/2	12	x	x	x	x	x	x
R-4990-EX	R-4999-EX	17	1-1/2	15	x	x	x	x	x	x
R-4990-FX	R-4999-FX	20	1-1/2	18	x	x	x	x	x	x
R-4990-GX	R-4999-GX	23	1-1/2	21	x	x	x	x	x	x
R-4990-HX	R-4999-HX	26	1-1/2	24	x	x	x	x	x	x

x - indicates availability

1/24/2018 Neenah Foundry | Heavy Duty

Bolted Catalog No.	A	B	C	Type A	Type C	Type D	Type E	Type P	Type Q
R-4990-JX	30	2	27	x	x	x			
R-4990-KX	33	2	30	x	x	x	x		
R-4990-LX	36	2	33	x	x	x			
R-4990-MX	39	2	36	x	x	x			
R-4990-NX	45	2	42	x	x	x			
R-4990-OX	51	2	48	x		x			

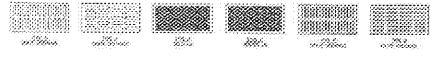
x - indicates availability

**Read Carefully Before Ordering**

The various standard trench drains are available with a number of alternatives. It is important to examine all of the variables carefully and specify your requirements fully. Your order will be entered correctly and promptly if it includes the following information:

- Complete catalog number
- Frame and pieces, when required
- Type of lid or grate: A, C, D, E, P or Q
- Length of trench sections
- Angles and intersections
- Load requirements

\* Trenches with angles, intersections, size changes, or other special requirements require detail drawings prior to ordering. Contact your sales representative or product engineering for assistance.



3 TRENCH DRAIN NTS



**ingenium**  
PLANNING & ENGINEERING

4498 N DALE PERRY HWY  
SUITE 250  
TAMPA, FL 33634  
813.301.0084  
WWW.INGENIUMTEAM.COM



HILTON GARDEN INN  
BUFORD, GEORGIA  
MALL OF GEORGIA BLVD &  
WOODWARD CROSSING BLVD



CLIENT:

**PHG BUFORD, LLC**  
3500 LENOX ROAD, SUITE 625  
ATLANTA, GEORGIA 30326  
PHONE: (404) 497-4111

**REVISION HISTORY**

NO.	DATE	DESCRIPTION
1	11/06/2019	ISSUE FOR PERMITS

THE CIVIL ENGINEER REGULARLY UPDATES ELECTRONIC FILES DURING THE DEVELOPMENT OF A PROJECT. AS A RESULT, THE DATA INCLUDED IN ANY CAD FILE OR DRAWING PRIOR TO ITS FINAL RELEASE DOES NOT NECESSARILY REFLECT THE COMPLETE SCOPE OR CONTENT AS REVISED IN THE CONTRACT. THE CONTENTS IN THESE FILES MAY THEREFORE BE PRELIMINARY, INCOMPLETE, MORE IN PROGRESS, AND SUBJECT TO CHANGE. FURTHERMORE, THE INFORMATION CONTAINED HEREIN IS THE SOLE PROPERTY OF THE CIVIL ENGINEER. THE ORIGINAL DRAWING REPRESENTED BY THIS INFORMATION SHALL NOT BE LOANED, ALTERED, OR REPRODUCED IN ANY MANNER WITHOUT THE EXPRESS WRITTEN CONSENT OF THE CIVIL ENGINEER. THESE PLANS ARE SUBJECT TO FEDERAL COPYRIGHT LAWS AND ANY USE OF SAME WITHOUT EXPRESS WRITTEN PERMISSION OF THE CIVIL ENGINEER IS PROHIBITED.

PROJ # 18060  
DWG NAME 18060 COILDWG  
ISSUE DATE 11/06/2019  
PROJ MGR EF

UTILITY DETAILS V

C04.6  
SHEET NUMBER

FOR PERMITS