

GENERAL UTILITY NOTES

- SEE SHEET C04.1 FOR GENERAL NOTES.
- SEE MEP PLANS FOR CONTINUATION OF ALL UTILITIES INTO BUILDING.
- SANITARY LATERALS SHALL HAVE A MINIMUM FALL OF 1/8".
- CONTRACTOR SHALL FIELD VERIFY ALL EXISTING UTILITIES AND THEIR LOCATIONS AND ELEVATIONS PRIOR TO STARTING CONSTRUCTION.
- THE FINAL LOCATION OF FIRE HYDRANTS, VALVES, WATER LINES, BACKFLOW PREVENTERS, ETC. SHALL BE DETERMINED DURING CONSTRUCTION. NOTIFY THE ENGINEER OF ANY CHANGES TO LOCATION OR CONFIGURATION. NFPA CODES SHALL BE ADHERED TO.
- THE CONTRACTOR SHALL CONTACT PUBLIC UTILITIES INSPECTIONS AT LEAST 72 HOURS PRIOR TO ANY CONSTRUCTION ACTIVITY.
- ALL WORK TO BE DONE IN STRICT ACCORDANCE WITH LOCAL GOVERNING CODES.
- UTILITY CONDUIT MATERIAL FOR ELECTRIC, TELEPHONE, AND CABLE SHALL BE INSTALLED PER UTILITY PROVIDER SPECIFICATIONS.
- CONTRACTOR TO BUILD CONCRETE TRANSFORMER PAD AND INSTALL SCHEDULE 80 PVC CONDUIT AND PULL STRING WITH SHEEPING BENDS.

NOTES

- DESIGN AND INSTALLATION OF UNDERGROUND SUPPLY PIPING WILL BE THE RESPONSIBILITY OF A GEORGIA CERTIFICATE OF COMPETENCY HOLDER FOR AUTOMATIC FIRE SPRINKLER SYSTEMS. FDC TO INCLUDE CHECK VALVE AUTO-DRIP VALVE AND SIGN READING: "AUTO-SPRINKLER OR AUTO-SPRINKLER-STAND PIPES." HOSE CONNECTIONS TO BE STANDARD THREADS PER NFPA 163.
- INSTALLATION/REPAIR OF UNDERGROUND FIRE SPRINKLER WATER SUPPLIES SHALL BE PERFORMED BY A UTILITY OR FIRE SPRINKLER CONTRACTOR OR FLUPEING CONTRACTOR LICENSED UNDER CHAPTER 4, TITLE 26, SECTION 25-11-7.
- BOTTOM SLAB TO B7.1 TO BE 12" IN THICKNESS.

UTILITY LEGEND

UTILITY	LINE TYPE/SYMBOL	REFERENCE
DOMESTIC WATER LINE	— DW — DW —	3" PVC
FIRE WATER LINE	— FW — FW —	8" DIP
BUILDING FIRE SPRINKLER LINE	— FWS — FWS —	8" DIP
IRRIGATION WATER LINE	— IRR — IRR —	1 1/2" PVC
DOMESTIC WATER METER (WM)	— WM —	SEE PLANS
IRRIGATION METER (IRR)	— IRR —	SEE PLANS
BACKFLOW PREVENTER (BFP)	— BFP —	N/A
FIRE VAULT (DCC)	— DCC —	N/A
DC BACKFLOW PREVENTER	— DCBP —	DETAIL 1, SHEET C04.2
WATER TAP OR TEE	— WT —	DETAIL 4, SHEET C04.2
GATE VALVE (GV)	— GV —	DETAILS 4 & 6, SHEET C04.2
THRUST BLOCK (TB)	— TB —	DETAIL 2, SHEET C04.2
FIRE HYDRANT (FH)	— FH —	N/A
FIRE DEPARTMENT CONNECTION	— FDC —	SEE ARCH. PLANS
SANITARY SENDER (SS)	— SS —	6" PVC
SANITARY MANHOLE (SM)	— SM —	DETAIL 4, SHEET C04.3
GENERAL CLEANOUT (CO)	— CO —	DETAIL 1, SHEET C04.3
SAMPLING MANHOLE	— SM —	N/A
SANITARY STRUCTURE NUMBER	— SN —	SEE PLANS
UNDERGROUND ELECTRIC LINE-PRIMARY	— UGE-P — UGE-P —	(2) 4" PVC
UNDERGROUND ELECTRIC LINE-SECONDARY	— UGE-S — UGE-S —	(2) 4" PVC
POST INDICATOR VALVE	— PIV —	N/A
SITE LIGHTING POLE	— SL —	SEE ARCH. PLANS
TRANSFORMER PAD	— TP —	BY UTILITY
METER/CT PEDESTAL	— M/P —	N/A
UNDERGROUND TELEPHONE LINE	— UGT — UGT —	(4) 4" PVC
GENERAL UTILITY CONDUIT	— GU — GU —	(2) 2" PVC
GAS LINE	— G — G —	"
GAS METERS	— GM —	"

ALL UTILITIES SHALL BE INSTALLED ACCORDING TO UTILITY PROVIDERS AND JURISDICTION STANDARDS AND SPECIFICATIONS.



ingenium
PLANNING & ENGINEERING

1449 N DALE HARRY HWY
SUITE 250
TAMPA, FL 33606
813.307.0084
WWW.INGENIUMTEAM.COM



HILTON GARDEN INN
BUFORD, GEORGIA
MALL OF GEORGIA BLVD &
WOODWARD CROSSING BLVD



CLIENT:

PHG BUFORD, LLC
3500 LENOX ROAD, SUITE 625
ATLANTA, GEORGIA 30326
PHONE: (404) 497-4111

REVISION HISTORY

NO.	DATE	DESCRIPTION
1	11/06/2019	ISSUE FOR PERMIT

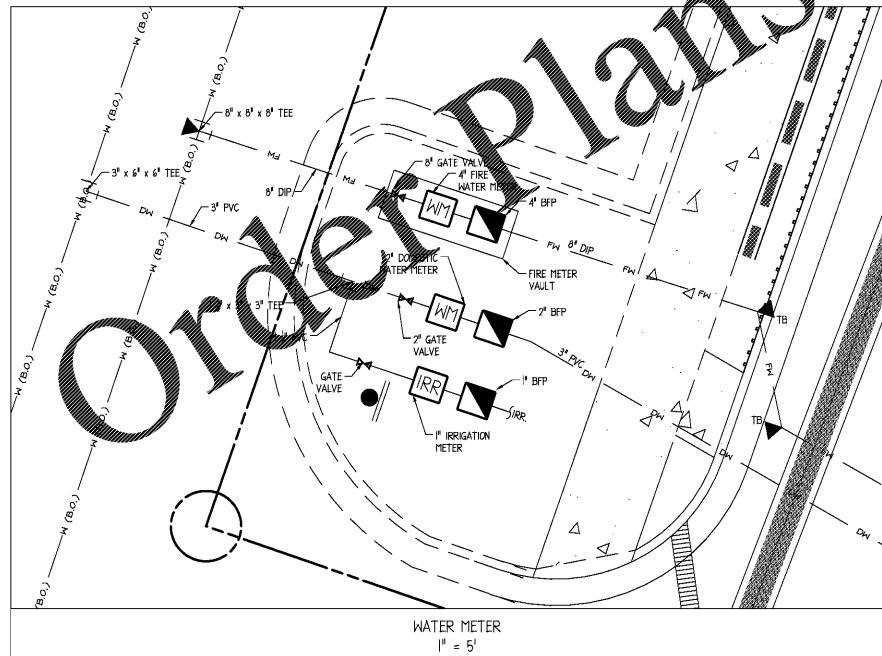
THE CIVIL ENGINEER REGULARLY UPDATES ELECTRONIC FILES DURING THE DEVELOPMENT OF A PROJECT. AS A RESULT, THE DATA INCLUDED IN ANY CAD FILE OR DRAWING PRIOR TO THIS FINAL RELEASE DOES NOT NECESSARILY REFLECT THE COMPLETE SCOPE OR CONTENT AS PROVIDED IN THE CONTRACT. THE CONTENTS IN THESE FILES MAY THEREFORE BE INCOMPLETE, INACCURATE, OR OTHERWISE SUBJECT TO CHANGE. FURTHERMORE, THE INFORMATION CONTAINED HEREIN IS THE SOLE PROPERTY OF THE CIVIL ENGINEER. THE ORIGINAL DESIGN REPRESENTED HEREIN BY THIS INFORMATION SHALL NOT BE USED, ALTERED, OR REPRODUCED IN ANY MANNER WITHOUT THE EXPRESS WRITTEN CONSENT OF THE CIVIL ENGINEER. THESE PLANS ARE SUBJECT TO FEDERAL COPYRIGHT LAWS. ANY USE OF THESE WITHOUT EXPRESS WRITTEN PERMISSION OF THE CIVIL ENGINEER IS PROHIBITED.

PROJ # 180662
ENGR NAME BOBBO GULDING
ISSUE DATE 11/06/2019
PROJ PGR # EF

**BUILDING UTILITY
DETAIL PLAN**

C04.1
SHEET NUMBER

ISSUE FOR PERMIT



SANITARY STRUCTURE TABLE				
STRUCTURE NAME	STRUCTURE TYPE	RIM ELEVATION	INVERT IN	INVERT OUT
S0	EXISTING MANHOLE (BY OTHERS)	1063.79	1056.91 (PEX51)	1056.50 (PEX10)
S1	EXISTING 6" CLEANOUT (BY OTHERS)	1064.43	1057.47 (PEX1)	1057.47 (PEX3)
S2	6" CLEANOUT DETAIL, SHEET C04.3	1067.16	1059.21 (P52)	1059.21 (P51)
S3	6" CLEANOUT DETAIL, SHEET C04.3	1067.82	1059.12 (P53)	1059.12 (P52)
S4	6" CLEANOUT DETAIL, SHEET C04.3	1067.05	1059.67 (P54)	1059.67 (P53)
S5	6" CLEANOUT DETAIL, SHEET C04.3	1065.73	1060.21 (P55)	1060.21 (P54)
S6	6" CLEANOUT DETAIL, SHEET C04.3	1065.74	1060.99 (P56)	1060.99 (P55)
S7	6" CLEANOUT DETAIL, SHEET C04.3	1066.68	1061.44 (P57)	1061.44 (P56)
S7.1	6" CLEANOUT DETAIL, SHEET C04.3	1066.75	1061.54 (P56.2)	1061.55 (P56.1)
S7.2	6" CLEANOUT DETAIL, SHEET C04.3	1067.02	1061.99 (P56.3)	1061.99 (P56.2)
S7.3	6" CLEANOUT DETAIL, SHEET C04.3	1067.66	1062.02 (P56.4)	1062.02 (P56.3)
S7.4	BUILDING STUB OUT	1067.68		1062.06 (P56.4)
S8	INSPECTION MANHOLE DETAIL 4, SHEET C04.3	1066.79	1061.54 (P58)	1061.54 (P57)
S9	1,500 GAL. GREASE TRAP DETAIL 2, SHEET C04.3	1066.70		
S9-IN	GREASE TRAP STUB IN	1066.75	1061.84 (P59)	
S9-OUT	GREASE TRAP STUB OUT	1066.65		1061.64 (P59)
S10	6" CLEANOUT DETAIL, SHEET C04.3	1067.05	1061.88 (P510)	1061.88 (P59)
S11	6" CLEANOUT DETAIL, SHEET C04.3	1067.70	1062.02 (P511)	1062.02 (P510)
S12	BUILDING STUB OUT	1067.71		1062.06 (P511)

SANITARY PIPE TABLE				
NAME	SIZE	LENGTH	SLOPE	MATERIAL
PEX10	10'	40'	16.84%	PVC
PEX51	6"	30'	1.50%	PVC
P51	6"	49'	1.50%	PVC
P52	6"	40'	1.50%	PVC
P53	6"	50'	1.50%	PVC
P54	6"	36'	1.50%	PVC
P55	6"	39'	2.20%	PVC
P56	6"	23'	2.20%	PVC
P56.1	6"	5'	2.20%	PVC
P56.2	6"	21'	2.20%	PVC
P56.3	6"	6'	2.20%	PVC
P56.4	6"	1'	3.20%	PVC
P57	6"	5'	2.20%	PVC
P58	6"	5'	2.20%	PVC
P59	6"	2'	2.20%	PVC
P510	6"	11'	2.26%	PVC
P511	6"	1'	3.20%	PVC

CONTRACTOR SHALL COORDINATE AND VERIFY LOCATION OF ALL SIGNAGE WITH OWNER PRIOR TO CONSTRUCTION.

CONTRACTOR SHALL COORDINATE AND ADJUST LOCATION OF LOOP DETECTORS TO AVOID UTILITY CONFLICTS PRIOR TO CONSTRUCTION.

CONTRACTOR SHALL INSTALL GENERAL UTILITY CONDUITS TO PLANTERS AROUND BUILDING AND PATIO. SEE ARCHITECTURAL/MEP PLANS FOR CONTINUATION.

CONTRACTOR SHALL PROTECT ALL ITEMS OUTSIDE LIMITS OF CONSTRUCTION UNLESS OTHERWISE NOTED IN THE CONSTRUCTION PLANS OR SPECIFICATIONS.

CONTRACTOR SHALL FIELD VERIFY ALL EXISTING UTILITIES (LOCATIONS AND ELEVATIONS) PRIOR TO STARTING CONSTRUCTION AND ALERT ENGINEER TO ANY DISCREPANCIES IMMEDIATELY.

24-HOUR CONTACT:
GREG FOX
(404) 754-8842



SCALE 1" = 5'