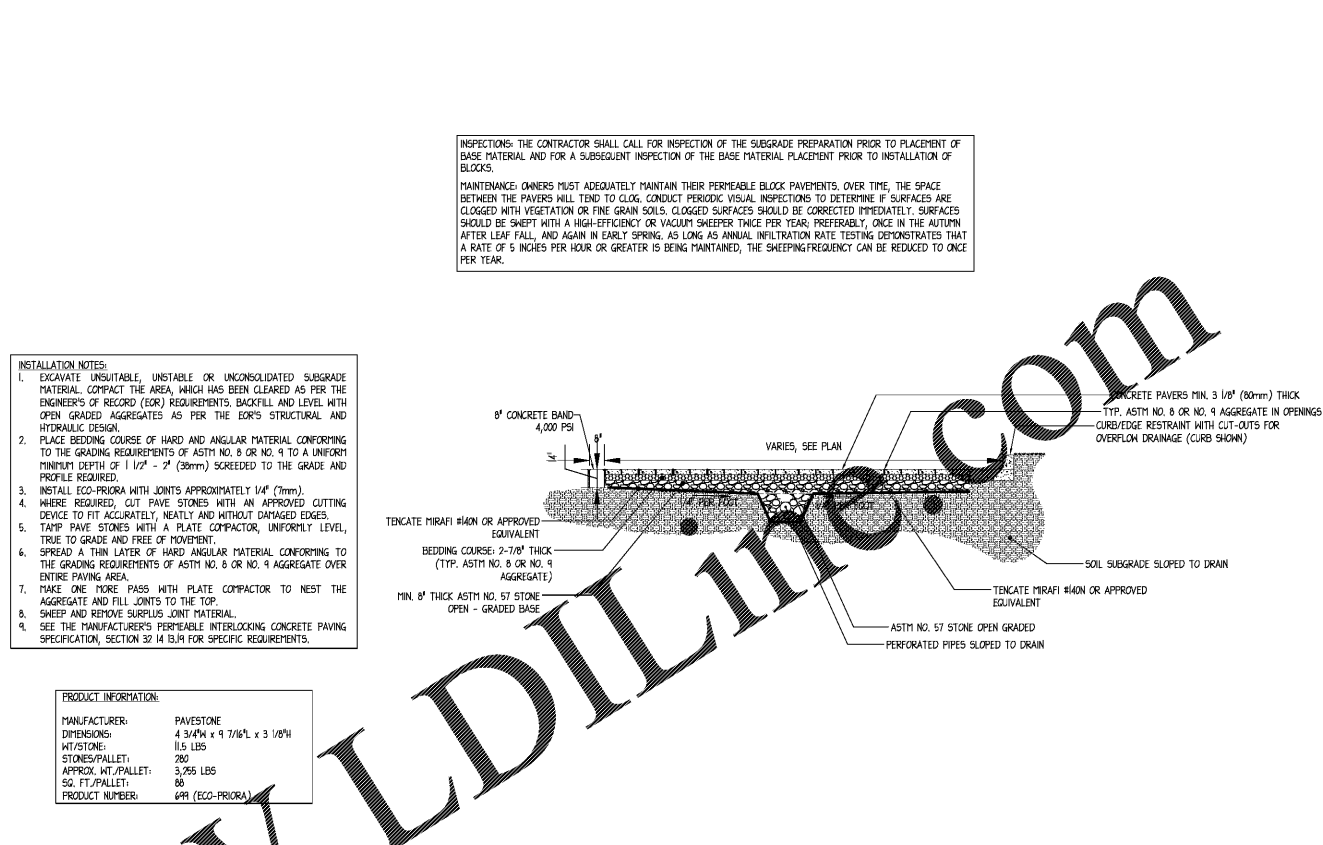
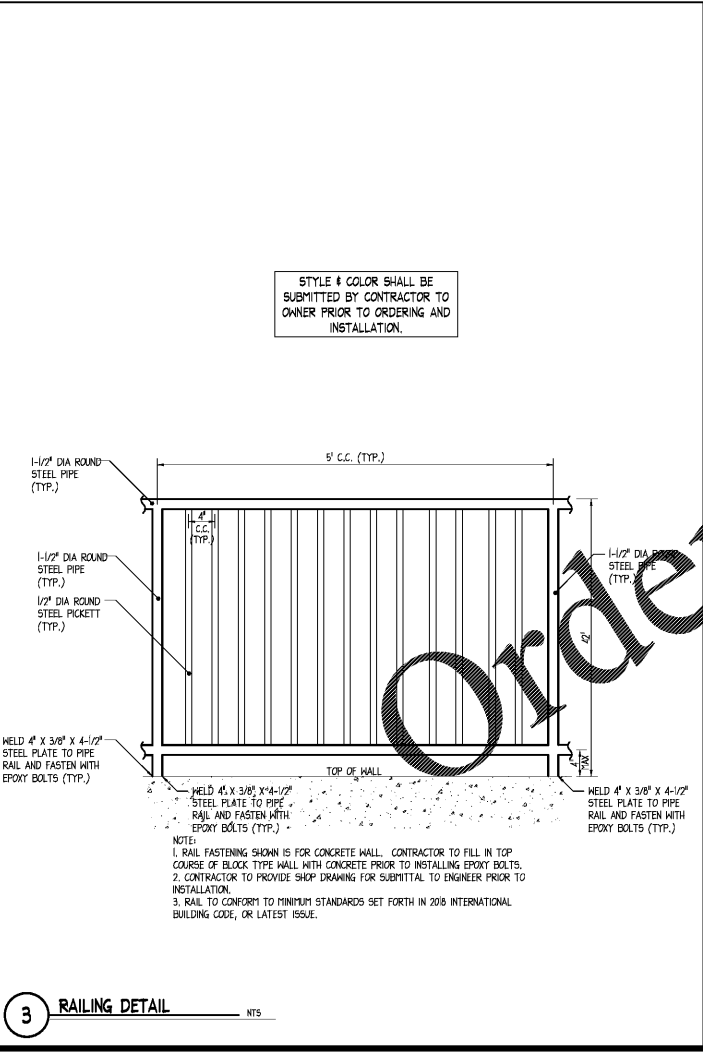


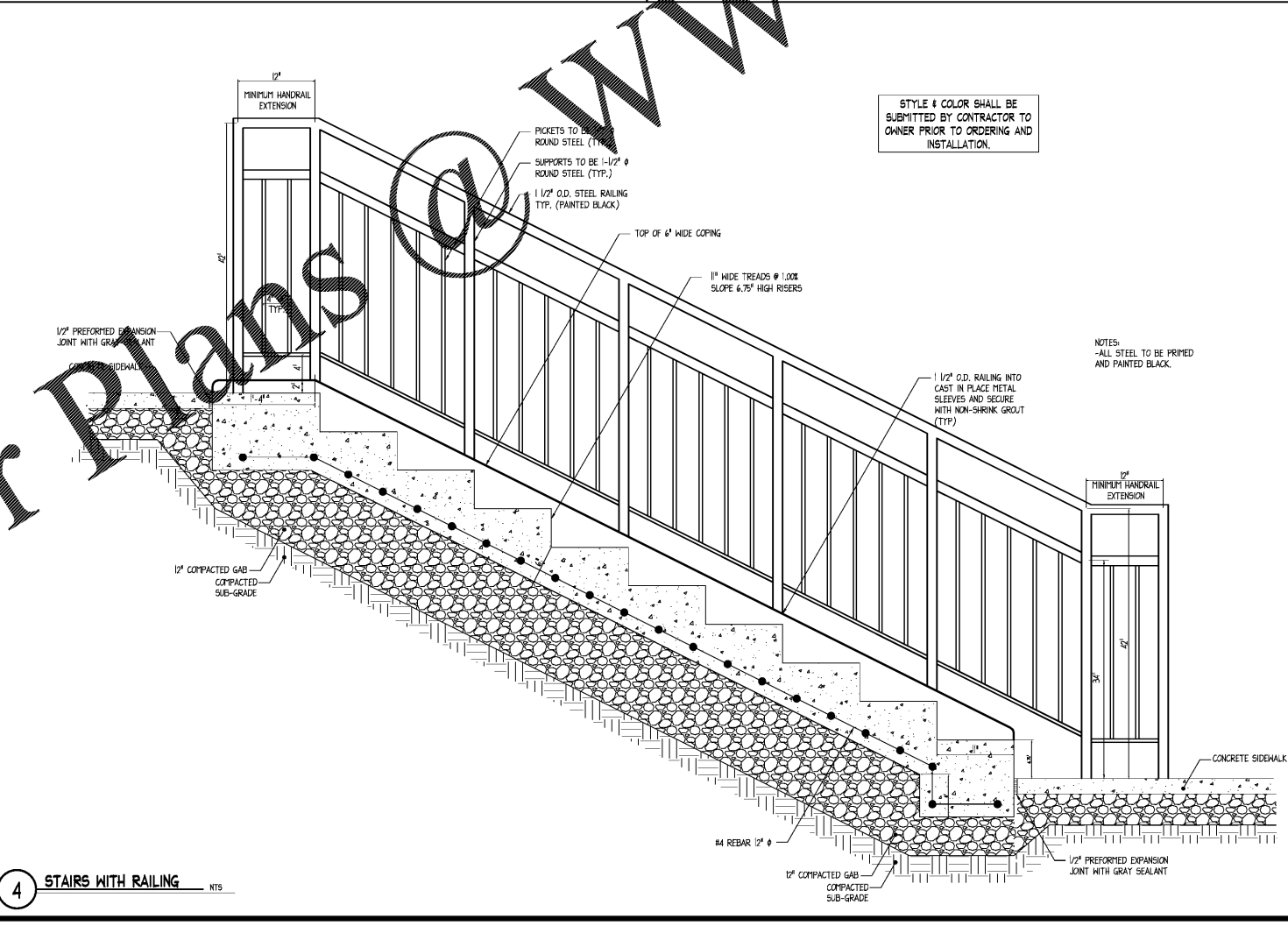
1 GUARDRAIL NTS



2 PERMEABLE PAVING NTS



3 RAILING DETAIL NTS



4 STAIRS WITH RAILING NTS

INSPECTIONS: THE CONTRACTOR SHALL CALL FOR INSPECTION OF THE SUBGRADE PREPARATION PRIOR TO PLACEMENT OF BASE MATERIAL AND FOR A SUBSEQUENT INSPECTION OF THE BASE MATERIAL PLACEMENT PRIOR TO INSTALLATION OF BLOCKS.
 MAINTENANCE: OWNERS MUST ADEQUATELY MAINTAIN THEIR PERMEABLE BLOCK PAVEMENTS. OVER TIME, THE SPACE BETWEEN THE PAVERS WILL TEND TO CLOG. CONDUCT PERIODIC VISUAL INSPECTIONS TO DETERMINE IF SURFACES ARE CLOGGED WITH VEGETATION OR FINE GRAIN SOILS. CLOGGED SURFACES SHOULD BE CORRECTED IMMEDIATELY. SURFACES SHOULD BE SHEPT WITH A HIGH-EFFICIENCY OR VACUUM SWEEPER TWICE PER YEAR, PREFERABLY, ONCE IN THE AUTUMN AFTER LEAF FALL, AND AGAIN IN EARLY SPRING. AS LONG AS ANNUAL INFILTRATION RATE TESTING DEMONSTRATES THAT A RATE OF 5 INCHES PER HOUR OR GREATER IS BEING MAINTAINED, THE SHEEPING/FREQUENCY CAN BE REDUCED TO ONE PER YEAR.

- INSTALLATION NOTES:
- EXCAVATE UNSUITABLE, UNSTABLE OR UNCONSOLIDATED SUBGRADE MATERIAL. COMPACT THE AREA, WHICH HAS BEEN CLEARED AS PER THE ENGINEERS OF RECORD (EOR) REQUIREMENTS. BACKFILL AND LEVEL WITH OPEN GRADED AGGREGATES AS PER THE EOR'S STRUCTURAL AND HYDRAULIC DESIGN.
 - PLACE BEDDING COURSE OF HARD AND ANGULAR MATERIAL CONFORMING TO THE GRADING REQUIREMENTS OF ASTM NO. 9 OR NO. 4 TO A UNIFORM MINIMUM DEPTH OF 1 1/2" - 2" (38mm) SCREENED TO THE GRADE AND PROFILE REQUIRED.
 - INSTALL ECO-PRICOR WITH JOINTS APPROXIMATELY 1/4" (7mm).
 - WHERE REQUIRED, CUT PAVE STONES WITH AN APPROVED CUTTING DEVICE TO FIT ACCURATELY, NEATLY AND WITHOUT DAMAGED EDGES.
 - TAMP PAVE STONES WITH A PLATE COMPACTOR, UNIFORMLY LEVEL, TRUE TO GRADE AND FREE OF MOVEMENT.
 - SPREAD A THIN LAYER OF HARD ANGULAR MATERIAL CONFORMING TO THE GRADING REQUIREMENTS OF ASTM NO. 8 OR NO. 4 AGGREGATE OVER ENTIRE PAVING AREA.
 - MAKE ONE MORE PASS WITH PLATE COMPACTOR TO NEST THE AGGREGATE AND FILL JOINTS TO THE TOP.
 - SHEEP AND REMOVE SURPLUS JOINT MATERIAL.
 - SEE THE MANUFACTURER'S PERMEABLE INTERLOCKING CONCRETE PAVING SPECIFICATION, SECTION 37 14 B.J.H FOR SPECIFIC REQUIREMENTS.

PRODUCT INFORMATION:

MANUFACTURER:	PAVESTONE
DIMENSIONS:	4 3/4" x 9 7/8" x 3 1/8"
WT/STONE:	11.5 LBS
STONES/PALLET:	260
APPROX. WT/PALLET:	3,355 LBS
SG. FT./PALLET:	65
PRODUCT NUMBER:	649 (ECO-PRICOR)

DEPARTMENT OF TRANSPORTATION
 STATE OF GEORGIA
 STANDARD
 "W" BEAM GUARDRAIL
 3" INCH GUARDRAIL HEIGHT
 NO. 4380
 AUGUST 2011

STYLE & COLOR SHALL BE SUBMITTED BY CONTRACTOR TO OWNER PRIOR TO ORDERING AND INSTALLATION.

STYLE & COLOR SHALL BE SUBMITTED BY CONTRACTOR TO OWNER PRIOR TO ORDERING AND INSTALLATION.



ingenium
 PLANNING & ENGINEERING
 4498 N DALE HARRY HWY
 SUITE 250
 TAMPA, FL 33634
 813.977.0064
 WWW.INGENIUMTEAM.COM



HILTON GARDEN INN
 BUFORD, GEORGIA
 MALL OF GEORGIA BLVD &
 WOODWARD CROSSING BLVD



CLIENT:
 PHG BUFORD, LLC
 3500 LENOX ROAD, SUITE 625
 ATLANTA, GEORGIA 30326
 PHONE: (404) 497-4111

REVISION HISTORY

NO.	DATE	DESCRIPTION
1	11/06/2019	ISSUE FOR PERMIT

THE CIVIL ENGINEER RELIABLY UPDATES ELECTRONIC FILES DURING THE DEVELOPMENT OF A PROJECT AS A RESULT, THE DATA INCLUDED IN ANY CAD FILE OR DRAWING PRIOR TO ITS FINAL RELEASE DOES NOT NECESSARILY REFLECT THE COMPLETE SCOPE OR CONTENT AS DEFINED IN THE CONTRACT. THE CONTENTS IN THESE FILES MAY THEREFORE BE PRELIMINARY, INCOMPLETE WORK IN PROGRESS, AND SUBJECT TO CHANGE. FURTHERMORE, THE INFORMATION CONTAINED HEREIN IS THE SOLE PROPERTY OF THE CIVIL ENGINEER. THE ORIGINAL DRAWING REPRESENTED HERE BY THIS INFORMATION SHALL NOT BE LOANED, ALTERED, OR REPRODUCED IN ANY FORMER WITHOUT THE EXPRESSED WRITTEN CONSENT OF THE CIVIL ENGINEER. THESE PLANS ARE SUBJECT TO FEDERAL COPYRIGHT LAWS. ANY USE OF THESE MATERIALS EXCEPTED WITHIN PERMISSION OF THE CIVIL ENGINEER IS PROHIBITED.

PROJ. #	180660
ENGR. NAME	180660 CSD.DWG
ISSUE DATE	11/06/2019
PROJ. MGR.	EF

HARDSCAPE DETAILS III
 C05.4
 SHEET NUMBER

SHEET FOR PERMIT