

DEMOLITION LEGEND

1. PROTECT ALL ITEMS DURING ALL PHASES OF CONSTRUCTION (SEE GENERAL DEMOLITION NOTE #1). THE CONTRACTOR SHALL ENSURE THE INTEGRITY OF ALL ITEMS DENOTED TO BE PROTECTED THAT ARE ADJACENT TO ITEMS DENTED TO BE DEMOLISHED AND WILL SAFELY REPAIR ANY SUCH ITEMS TO THE REQUIRED JURISDICTIONAL STANDARDS.
2. SAWCUT AND REMOVE EXISTING CONCRETE, SIDEWALK, CURB AND GUTTER AND ASSOCIATED APPURTENANCES INCLUDING, BUT NOT LIMITED TO, REINFORCEMENT AND STONE BASE.
3. REMOVE EXISTING ASPHALT AND ASSOCIATED APPURTENANCES INCLUDING, BUT LIMITED TO, REINFORCEMENT AND STONE BASE.
4. CONTRACTOR SHALL REMOVE GRATE, CLEAN OUT EXISTING INLET AND REPLACE WITH A MANHOLE TOP.

GENERAL DEMOLITION NOTES

1. ALL ITEMS TO BE PROTECTED SHALL BE PROTECTED THROUGH ALL THE PHASES OF CONSTRUCTION UNTIL FINAL ACCEPTANCE BY CITY OF BUFORD/GEORGETOWN COUNTY IS RECEIVED.
2. CONTRACTOR TO COMPLY WITH ALL LOCAL, STATE, AND FEDERAL REQUIREMENTS WITH ALL DEMOLITION ACTIVITIES. IF ADDITIONAL REQUIREMENTS ARE REQUIRED FOR HAZARDOUS WASTE REMOVAL INCLUDING BUT NOT LIMITED TO ASBESTOS, SEPTIC FIELDS, LEAD, PCB, TCE, OR OTHER WASTE OR CONTAMINANT, IT IS THE CONTRACTORS RESPONSIBILITY TO COMPLY WITH MANDATES PRIOR TO COMMENCEMENT OF CONSTRUCTION.
3. CONTRACTORS SHALL COORDINATE WITH ALL UTILITY COMPANIES CONCERNING THE ABANDONMENT, RELOCATION AND/OR DEMOLITION OF UTILITIES PRIOR TO CONSTRUCTION. NO WORK IS TO BE PERFORMED ON LIVE LINES UNLESS APPROVED IN WRITING BY THE UTILITY IN ALL CASES. A REPRESENTATIVE FROM THE UTILITY SHALL BE PRESENT FOR INITIAL ABANDONMENT AND/OR LIVE CUTS. CONTRACTOR SHALL USE EXTREME CAUTION WHEN WORKING NEAR UTILITIES AND SHALL PROTECT THEM AT ALL TIMES.
4. CONTRACTOR IS RESPONSIBLE FOR PROCUREMENT OF ALL NECESSARY PERMITS.
5. DEMOLITION SHALL INCLUDE ALL LABOR, EQUIPMENT, MATERIALS, HAULING, PERMITTING, FEES, AND COORDINATION WITH PUBLIC AND/OR PRIVATE UTILITY REQUIRED TO REMOVE AND PROPERLY DISPOSE OF ANY ITEM NECESSARY TO PERFORM THE REQUIRED DEMOLITION INDICATED ON THE PLANS.
6. RELOCATION SHALL INCLUDE ALL LABOR, EQUIPMENT, MATERIALS, HAULING, PERMITTING, FEES, AND COORDINATION WITH PUBLIC AND/OR PRIVATE UTILITY REQUIRED TO REMOVE, RELOCATE AND INSTALL NEW ITEMS AS INDICATED ON THE PLANS.
7. ABANDONMENT SHALL INCLUDE ALL LABOR, EQUIPMENT, MATERIALS, PERMITTING, FEES, AND COORDINATION WITH PUBLIC AND/OR PRIVATE UTILITY REQUIRED TO REMOVE AND ABANDON ITEMS AS INDICATED ON THE PLANS.
8. THE CONTRACTOR SHALL COORDINATE ALL TREE AND LANDSCAPE REMOVAL WITH THE LANDSCAPE PLANS. ANY DISCREPANCY BETWEEN THIS DEMOLITION PLAN AND THE LANDSCAPE PLANS SHALL BE BROUGHT TO THE ATTENTION OF THE OWNER PRIOR TO CONSTRUCTION.
9. THE CONTRACTOR IS FULLY AND COMPLETELY RESPONSIBLE FOR LOCATION, VERIFICATION, PROTECTION, STORAGE, MAINTENANCE, DEMOLITION, REMOVAL, RELOCATION OR ALTERATION OF ALL EXISTING SITE UTILITIES, SITE IMPROVEMENTS, STRUCTURES OR CONSTRUCTION ELEMENTS AS REQUIRED TO COMPLETE THE WORK THAT ARE SHOWN ON THE PLANS AND OR THAT ARE OBSERVABLE IN THE FIELD, WHETHER CONSPICUOUSLY VISIBLE OR NOT. THE CONTRACTOR SHALL VISIT THE SITE AND BECOME THOROUGHLY FAMILIAR WITH ALL EXISTING IMPROVEMENTS, UTILITIES, AND SITE CONDITIONS PRIOR TO BIDDING AND CONSTRUCTION.
10. THIS DEMOLITION PLAN IS FOR GRAPHICAL REFERENCE ONLY. ITEMS NOT DEPICTED ON THESE PLAN MAY BE REQUIRED TO BE PROTECTED, REMOVED, OR RELOCATED. THE CONTRACTOR IS RESPONSIBLE FOR FIELD VERIFYING THE LOCATIONS OF ALL EXISTING STRUCTURES, UTILITIES, AND APPURTENANCES WITHIN THE LIMITS OF CONSTRUCTION. DEMOLITION INCLUDES BUT IS NOT LIMITED TO THE ITEMS SHOWN ON THIS PLAN.
11. THE CONTRACTOR SHALL USE EXTREME CAUTION WHEN WORKING NEAR ANY EXISTING UNDERGROUND OR OVERHEAD UTILITIES.
12. SAWCUT DIMENSIONS SHOWN ARE APPROXIMATE. CONTRACTOR SHALL FIELD STAKE AND CONSULT ENGINEER TO VERIFY PRIOR TO CONSTRUCTION.



ingenium
PLANNING & ENGINEERING

1449 N DALE HARRY HWY
SUITE 250
TAYLOR, FL 32666
853.307.0084
WWW.INGENIUMTEAM.COM



HILTON GARDEN INN
BUFORD, GEORGIA
MALL OF GEORGIA BLVD &
WOODWARD CROSSING BLVD

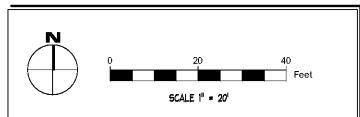
Hilton
Garden Inn

CLIENT:
PHG BUFORD, LLC
3500 LENOX ROAD, SUITE 625
ATLANTA, GEORGIA 30326
PHONE: (404) 497-4111

CONTRACTOR SHALL PROTECT ALL ITEMS OUTSIDE LIMITS OF CONSTRUCTION UNLESS OTHERWISE NOTED IN THE CONSTRUCTION PLANS OR SPECIFICATIONS.

CONTRACTOR SHALL FIELD VERIFY ALL EXISTING UTILITIES (LOCATIONS AND ELEVATIONS) PRIOR TO STARTING CONSTRUCTION AND ALERT ENGINEER TO ANY DISCREPANCIES IMMEDIATELY.

24-HOUR CONTACT:
GREG FOX
(404) 754-8842



REVISION HISTORY

NO.	DATE	DESCRIPTION

THE CIVIL ENGINEER REGULARLY UPDATES ELECTRONIC FILES DURING THE DEVELOPMENT OF A PROJECT AS A RESULT, THE DATA INCLUDED IN ANY CAD FILE OR DRAWING PRIOR TO ITS FINAL RELEASE DOES NOT NECESSARILY REFLECT THE COMPLETE SCOPE OR CONTENT AS DEFINED IN THE CONTRACT. THE CONTENTS IN THESE FILES MAY THEREFORE BE PRELIMINARY, INCOMPLETE, WORK IN PROGRESS, AND SUBJECT TO CHANGE. FURTHERMORE, THE INFORMATION CONTAINED HEREIN IS THE SOLE PROPERTY OF THE CIVIL ENGINEER. THE ORIGINAL DESIGN REPRESENTED HERE BY THIS INFORMATION SHALL NOT BE REPRODUCED, ALTERED, OR REPRODUCED IN ANY MANNER WITHOUT THE EXPRESSED WRITTEN CONSENT OF THE CIVIL ENGINEER. THESE PLANS ARE SUBJECT TO FEDERAL COPYRIGHT LAWS. ANY USE OF SAME WITHOUT EXPRESS WRITTEN PERMISSION OF THE CIVIL ENGINEER IS PROHIBITED.

PROJ #	180662
ENGR NAME	180662.C02.DWG
ISSUE DATE	11/06/2019
PROJ MGR	EF

DEMOLITION PLAN

CO2.1
SHEET NUMBER

ISSUE FOR PERMIT