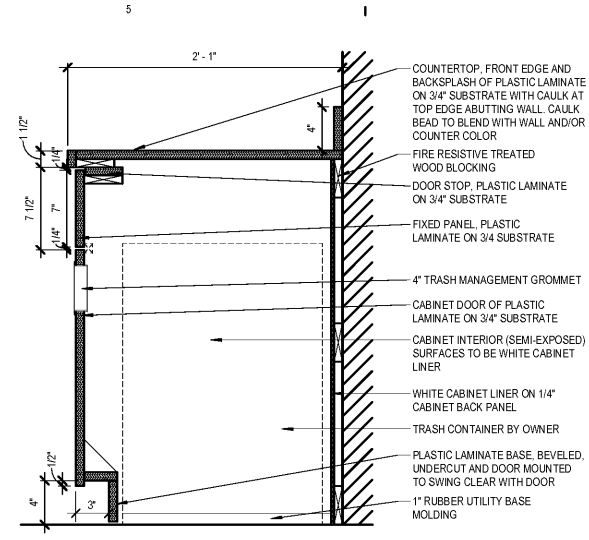
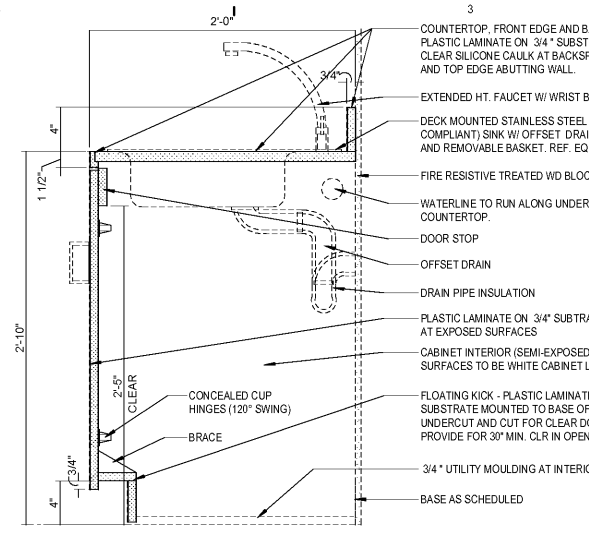


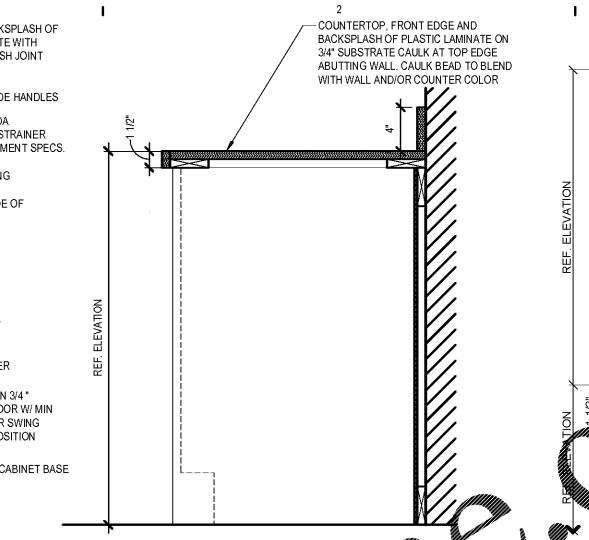
A6 DETAIL @ BASE CABINET, W/ DRAWER
1 1/2" = 1'-0"
C3 / A-211



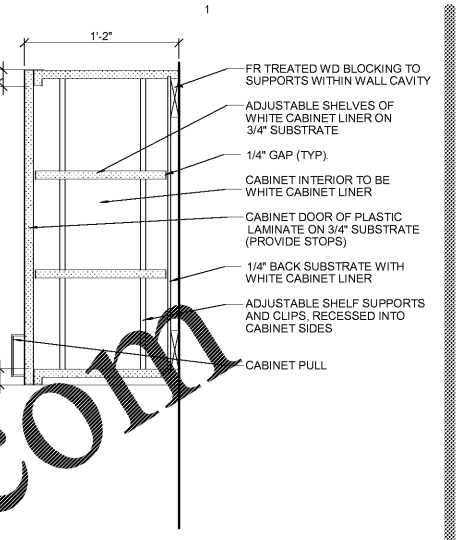
A5 DETAIL @ BASE CABINET, TRACH RECEPTACLE
1 1/2" = 1'-0"
B6 / A-211



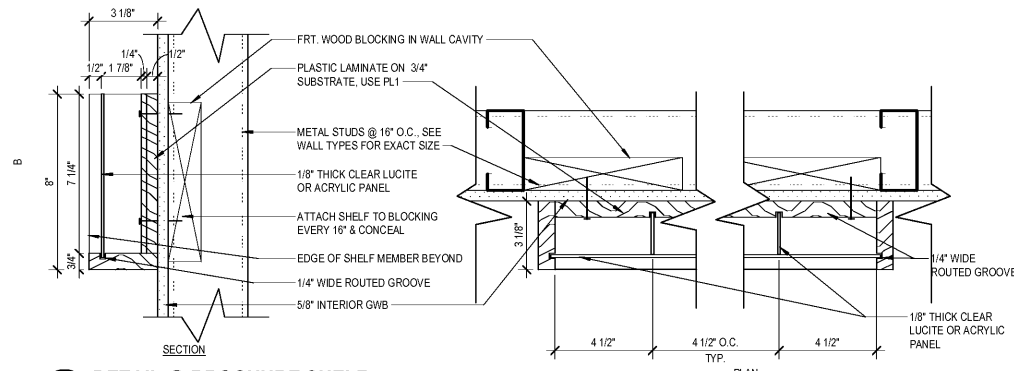
A4 DETAIL @ BASE CABINET, SINK
1 1/2" = 1'-0"
C3 / A-211



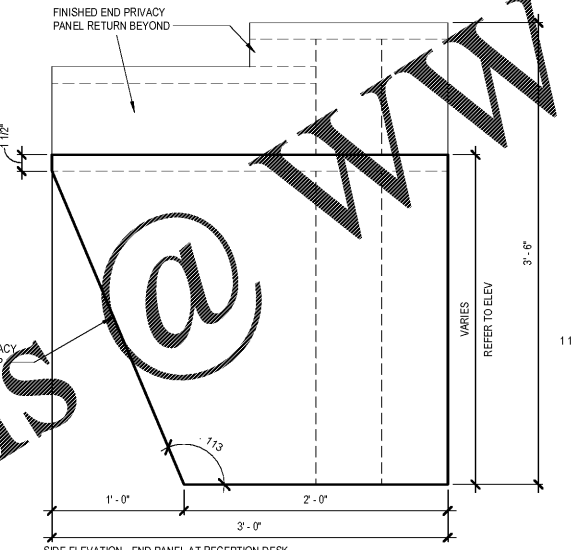
A3 DETAIL @ BASE CABINET, EQUIP.
1 1/2" = 1'-0"
B6 / A-211



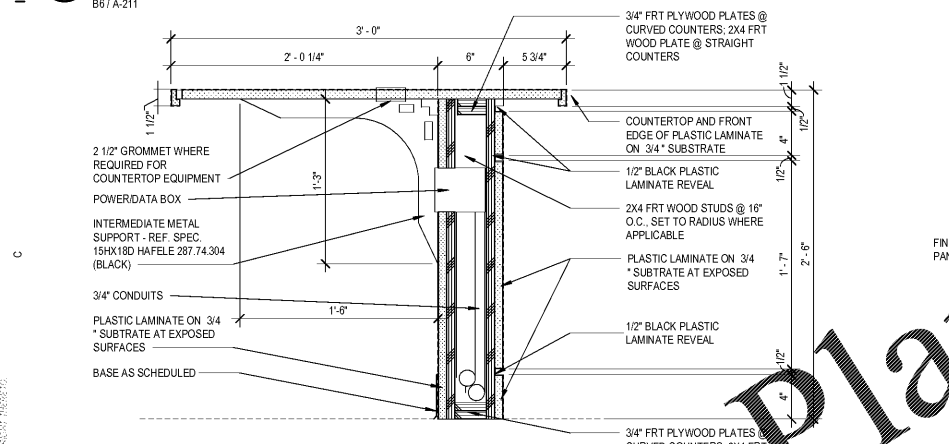
A2 DETAIL @ OVERHEAD CABINET, TYP.
1 1/2" = 1'-0"
C3 / A-211



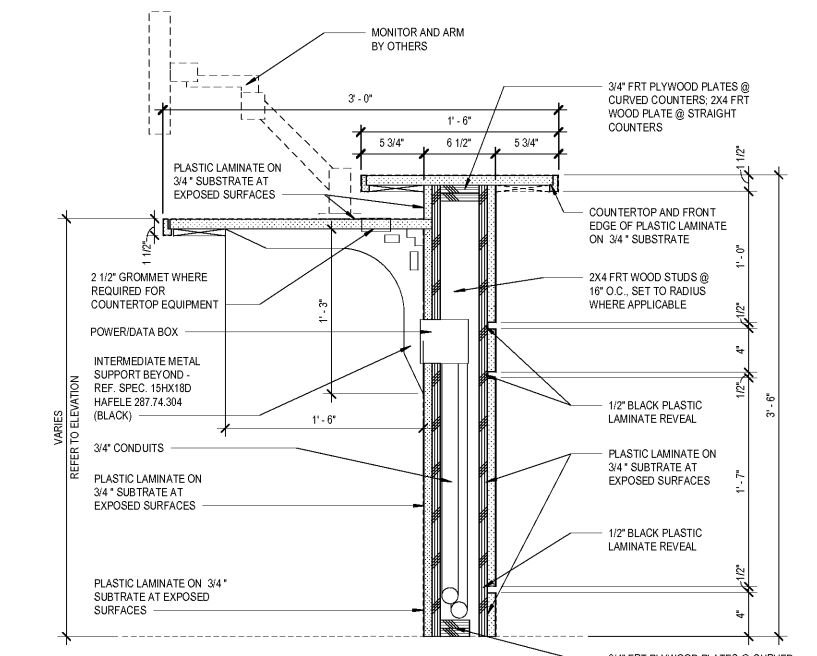
B6 DETAIL @ BROCHURE SHELF
3" = 1'-0"
B6 / A-211



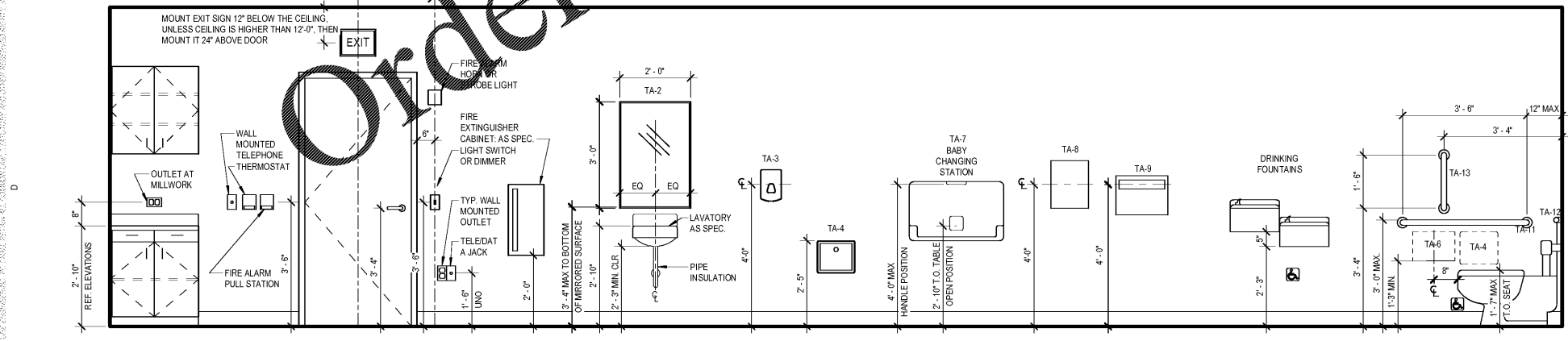
C4 DETAIL @ RECEPTION DESK END PANEL
1 1/2" = 1'-0"



C6 CASHIER COUNTER - LOWER
1 1/2" = 1'-0"
B3 / A-211



C2 CASHIER COUNTER - UPPER
1 1/2" = 1'-0"
B5 / A-211



D6 STANDARD MOUNTING HEIGHTS
1/2" = 1'-0"

progressive | ae
PROGRESSIVE ARCHITECTURE ENGINEERS, P.C.
330 South Tryon St., Suite 500 - Charlotte, NC 28202 - TEL: 704.751.8500 - WWW.PROGRESSIVEAE.COM

COLUMBUS, GA
AAA AUTO CLUB GROUP

6201 Veterans Pkwy., Suite C, Columbus, GA 31909

ISSUANCE

ISSUED FOR CONSTRUCTION
2019/11/13

REVISIONS

NO.	DATE	DESCRIPTION

FILE NUMBER 79890016
PROJECT MANAGER JE
PROFESSIONAL GWJ
DRAWN BY ME
CHECKED BY MB

DETAILS
A-231