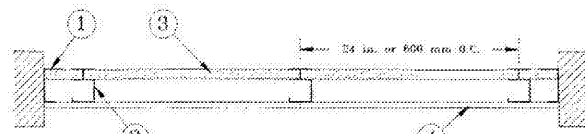
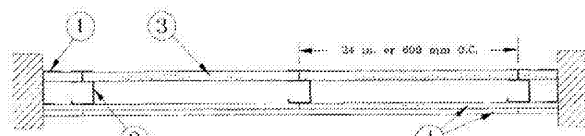


Nonbearing Wall Ratings — 1, 2, 3 or 4 Hr.

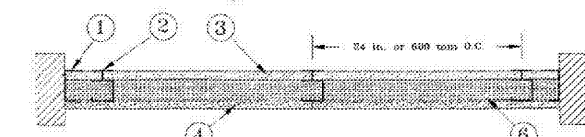
System A — 1 Hr.



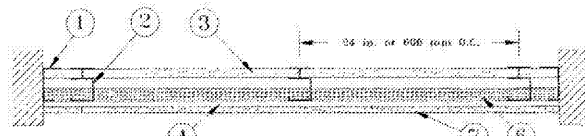
System B — 2 Hr.



System C — 2 Hr.



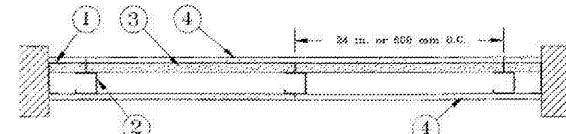
System D — 2 Hr.



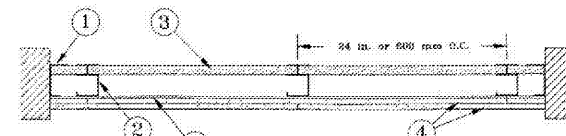
System I — 4 Hr.



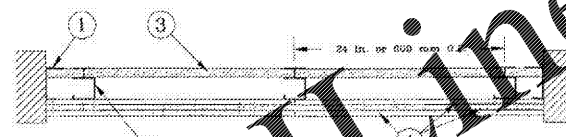
System E — 2 Hr.



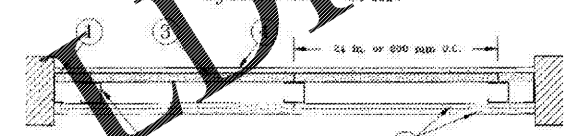
System F — 2 Hr.



System G — 3 Hr.



System H — 3 Hr.



System J — 3 Hr.



CANADIAN GYPSUM COMPANY — 1/2 in. Type C, IP-X2, IPC-AR or WRC
 UNITED STATES GYPSUM CO — 1/2 in. Types C, IP-X2, IPC-AR, or WRC
 USG MEXICO S A DE C V — 1/2 in. Types C, IP-X2, IPC-AR or WRC

5. Joint Tape and Compound — (Not Shown)
 Systems A, B, C, E, F, G, H, I

Joints on outer layers of gypsum boards covered with paper tape and joint compound. Paper tape and joint compound may be omitted when gypsum boards are supplied with square edges. Exposed screw heads covered with joint compound.

6. Batts and Blankets* —
 Systems A, B, E, F, G, H, I

Glass fiber batts partially or completely filling stud cavity. Any glass fiber batt mineral bearing the UL Classification Marking as to Fire Resistance.

*Bearing the UL Classification Mark

1. Floor, Sill and Wall Runners — "J" shaped runner, 4 in. deep with unequal legs of 1 in. and 2 in., fabricated from min 20 MSG galv steel. Runners positioned with short leg toward finish side of wall. Runners attached to structural supports with steel fasteners located not greater than 2 in. from ends and not greater than 24 in. OC.

2. Steel Studs — "C-H" shaped studs, 4 in. deep, fabricated from min 20 MSG galv steel. Cut to lengths 3/8 to 1/2 in. less than floor-to-ceiling height and spaced 24 in. or 600 mm OC.

3. Gypsum Board* — Gypsum liner panels, nom 1 in. thick, 24 in. or 600 mm (for metric spacing) wide. Panels cut 1 in. less in length than floor to ceiling height. Vertical edges inserted in "H" portion of "C-H" studs. Free edge of end panels attached to long leg of vertical "J" runners with 1-5/8 in. long Type S steel screws spaced not greater than 12 in. OC. When wall height exceeds liner panel length, liner panel may be butted to extend to the full height of the wall. Horizontal joints need not be backed by steel framing. Butt joints backed with 6 in. by 22 in. strips of 3/4 in. thick gypsum wallboard (Item 4). Wallboard strips centered over butt joints and secured to liner panels with six 1-1/2 in. long Type G steel screws, three screws along the 22 in. dimension at the top and bottom of the strips.

CANADIAN GYPSUM COMPANY — Type SLX

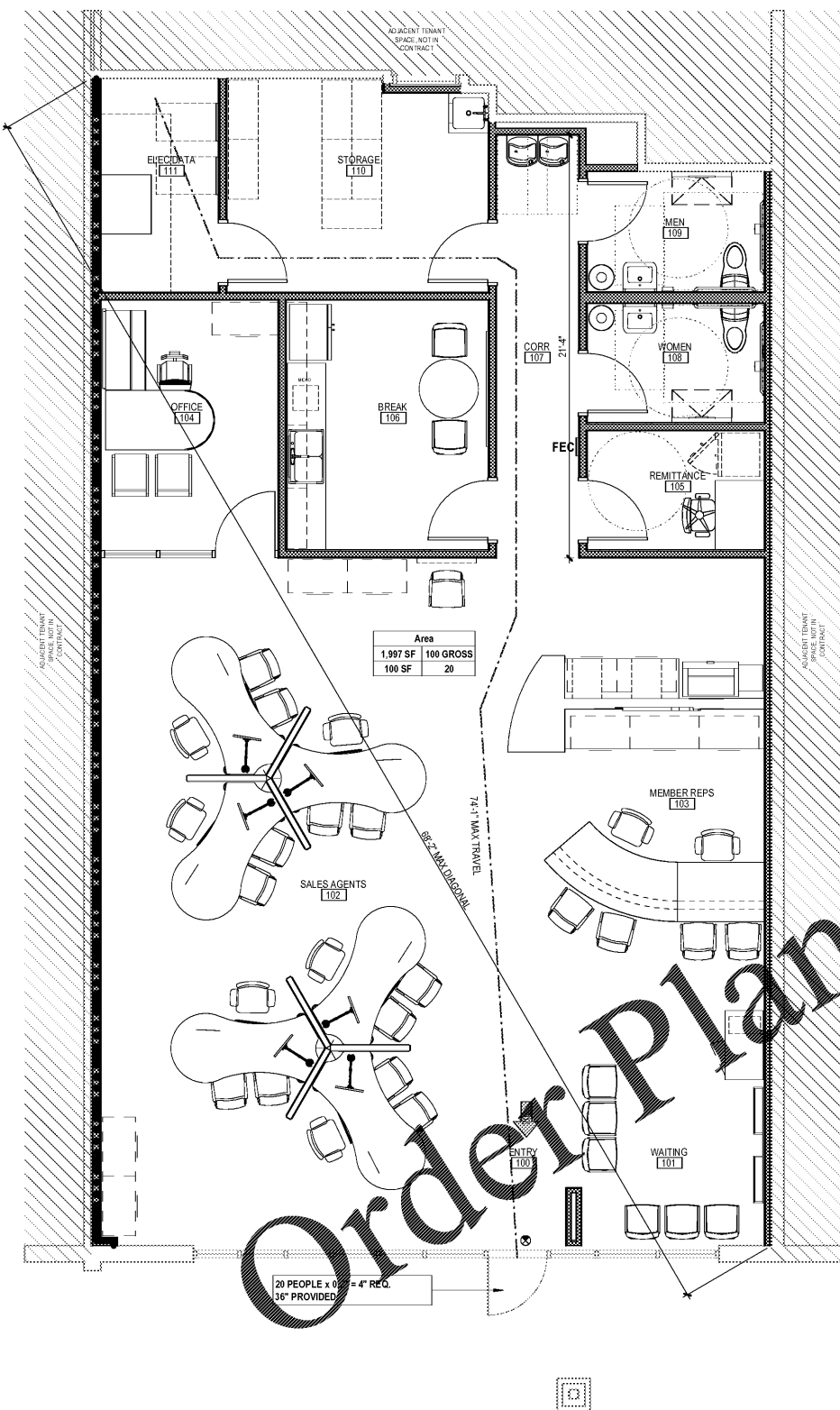
UNITED STATES GYPSUM CO — Type SLX

USG MEXICO S A DE C V — Type SLX

4. Gypsum Board* —

System B - 2 Hr

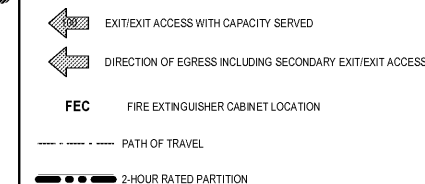
Gypsum panels, with beveled, square or tapered edges, nom 1/2 in. thick, 48 in. or 1200 mm wide, applied vertically or horizontally in two layers. Inner or base layer attached to studs with 1 in. long Type S steel screws spaced 24 in. OC when installed vertically or 16 in. OC when installed horizontally. Outer or face layer attached to studs with 1-5/8 in. long Type S steel screws spaced 12 in. OC when installed vertically and staggered 12 in. from base layer screws or 8 in. OC when installed horizontally and staggered 8 in. from base layer screws. Horizontal joints between inner and outer layers staggered a min of 12 in. Horizontal joints need not be backed by steel framing. Vertical joints centered over studs and staggered 24 in.



LIFE SAFETY PLAN NOTES

- G1. REFERENCE LEGEND SHEET G-002 AND / OR PROJECT MANUAL FOR GENERAL NOTES, RESPONSIBILITIES, AND PROCEDURES. EXECUTION OF CONSTRUCTION CONTRACT OR PERFORMING WORK ACCEPTS THE CONDITIONS AND PROVISIONS DOCUMENTED WITHIN SHEET G-002 AND CONSIDERS THE FOLLOWING NOTATION SUPPLEMENTAL TO THOSE CONDITIONS.
- G2. BRACE PARTITIONS TO STRUCTURE IN ACCORDANCE WITH APPLICABLE BUILDING CODE(S), COORDINATE WITH LOCAL JURISDICTION FOR RELEVANT ISSUE OF LISTED CODE REFERENCES AND FOR ANY LOCAL OR STATE CODE AMENDMENTS.
- G3. PARTITION COMPONENTS SHALL PROVIDE A FIRE RESISTIVE ASSEMBLY WITH FIRE RATINGS AS NOTED FOR EACH TYPE.
- G4. DOOR HARDWARE FUNCTION SHALL PROVIDE MECHANICAL FREE EGRESS TO EGRESS SIDE OF DOOR.
- G5. PROVIDE FIRE EXTINGUISHERS PER APPLICABLE FIRE CODE. COORDINATE WITH LOCAL JURISDICTION FOR RELEVANT ISSUE OF LISTED CODE REFERENCES AND FOR ANY LOCAL OR STATE CODE AMENDMENTS.
- G6. ALL ANGLES ARE TO BE 45 OR 90 DEGREES UNLESS NOTED OTHERWISE.
- G7. EXISTING BUILDING ELEMENTS / MATERIALS TO REMAIN SHOWN FADED OR NOTED, TYPICAL.
- G8. VERIFY DIMENSIONS REFERENCE TO EXISTING BUILDING ELEMENTS IN FIELD.
- G9. BUILDING ELEMENTS / MATERIALS TO BE NEW CONSTRUCTION, UNO.

LIFE SAFETY LEGEND



COLUMBUS, GA
AAA AUTO CLUB GROUP
 progressive | ae
 PROGRESSIVE ARCHITECTURE ENGINEERS, P.C.
 330 South Tyner St., Suite 503 • Columbus, GA 31906 • 704.735.6600 • www.progressiveae.com
 6201 Veterans Pkwy., Suite C, Columbus, GA 31909

ISSUANCE
 ISSUED FOR CONSTRUCTION
 201911/13
 REVISIONS
 NO. DATE DESCRIPTION
 FILE NUMBER 79890016
 PROJECT MANAGER JE
 PROFESSIONAL GWJ
 DRAWN BY ME
 CHECKED BY MB

LIFE SAFETY PLAN
G-101