

CODE SUMMARY

Name of Project: AAA RETAIL CENTER
Address: 6201 VETERANS PKWY, SUITE C, COLUMBUS, GA 31909
Proposed Use: BUSINESS
Owner or Authorized Agent: JUSTIN FAIRSHALL

PROJECT SUMMARY
Building Description: UPPIT OF TENANT SPACE IN EXISTING SHELL RETAIL BUILDING TO CREATE A NEW FACILITY FOR THE RETAIL SALES OF TRAVEL SERVICES AND INSURANCE WITH SUPPORTING BUSINESS OFFICES.

Does this project have air rights, easements, an assumed or deeded property line, no build easements or circumstances similar to the aforementioned? Yes No X
If yes, please provide a copy of the official documents.

Check if applicable to your project:
[ ] Industrial equipment with declaration document attached
[ ] RTAP (revisions approved plans)

Table with columns: LEAD DESIGN PROFESSIONAL, DESIGNER, FIRM, NAME, LICENSE, TELEPHONE, EMAIL. Includes contact info for Justin Fairshall.

- What type of work is being performed?
[ ] New Construction: (A project from the site work through the completion of work required for tenant occupancy)
[ ] Addition: (An Existing Building that is adding heated or unheated space.)
[ ] Upfit: (First Time Interior Completion)
[ ] Alteration: (Previously Occupied Space) This includes Change of Use.

Building Code:
[ ] 2012 International Building Code
[ ] 2012 International Mechanical Code
[ ] 2012 International Fuel and Gas Code
[ ] 2017 National Electrical Code
[ ] 2009 International Energy Conservation Code
[ ] 2012 International Fire Code

New Building:
[ ] New building
[ ] First time interior completion (upfit)
[ ] Shell Building

Existing Building:
[ ] Change of use/occupancy
[ ] Building/tenant space interior completion (Alteration / Renovation)

Year of construction: Previous use: BUSINESS

Table with columns: BUILDING DATA, Construction Type, Sprinklers, Fire Alarm, Building Height, Modernize (Part), etc.

Table with columns: ALLOWABLE AREA, Occupancy, Assembly, Business, Educational, Factory, etc.

Incidental Uses: If applicable.
[ ] Furnace Room where any piece of equipment is over 400,000 Btu per hour input
[ ] Rooms with boilers where the largest piece of equipment is over 15 psi and 10 horsepower

Special Uses: If Applicable.
[ ] 402 [ ] 403 [ ] 404 [ ] 405 [ ] 406 [ ] 408 [ ] 409 [ ] 411 [ ] 412 [ ] 413 [ ] 414 [ ] 415 [ ] 417 [ ] 418 [ ] 420 [ ] 421 [ ] 422 [ ] 423 [ ] 424 [ ] 426 [ ] 427

Special Provisions: If Applicable.
[ ] 509.2 [ ] 509.3 [ ] 509.4 [ ] 509.5 [ ] 509.6 [ ] 509.7 [ ] 509.8 [ ] 509.9

Mixed Occupancy: If Applicable
[ ] No [ ] Yes Separation: 2hr Exception: N/A
Incidental Use Separation: This separation is not exempt as Non-Separation Use (see exceptions)

EXIT REQUIREMENTS
THIS SECTION TO BE COMPLETED FOR ALL PROJECTS
NUMBER AND ARRANGEMENT OF EXITS

Table for EXIT REQUIREMENTS with columns: Floor, Room or Space Designation, Minimum Number of Exits, Travel Distance, etc.

OCCUPANT LOAD AND EXIT WIDTH
THIS SECTION TO BE COMPLETED FOR ALL PROJECTS

Table for OCCUPANT LOAD AND EXIT WIDTH with columns: Use Group or Space Designation, Area, Occupant Load, Egress Width, etc.

Table for ACCESSIBLE DWELLING UNITS with columns: Unit, Accessible, etc.

Table for ACCESSIBLE PARKING with columns: Unit, Accessible, etc.

Table for ALLOWABLE HEIGHT with columns: Type of Construction, Building Height, etc.

Table for FIRE PROTECTION REQUIREMENTS with columns: Building Element, Fire, Alarm, etc.

Table for SCHEDULE OF SPECIAL INSPECTION SERVICES with columns: Inspection, Frequency, etc.

Table for PLUMBING FIXTURE REQUIREMENTS with columns: Occupancy, Water, Wastewater, etc.

Table for SPECIAL APPROVALS with columns: Approval, Description, etc.

Table for STRUCTURAL DESIGN ENERGY SUMMARY with columns: Description, etc.

Table for ELECTRICAL SUMMARY with columns: Description, etc.

Table for MECHANICAL SUMMARY with columns: Description, etc.

WALL LEGENDS
CHECK IF THE FOLLOWING ARE PRESENT AND INDICATED BY A WALL LEGEND ON ALL PLANS

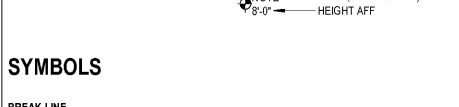
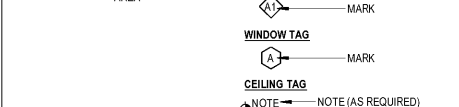
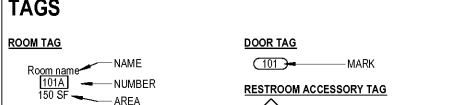
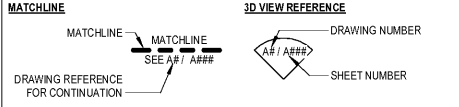
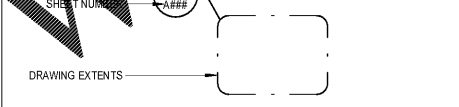
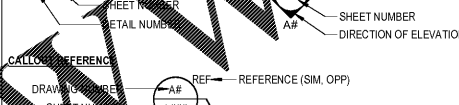
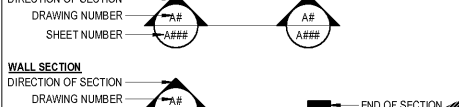
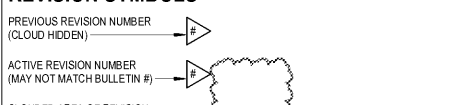
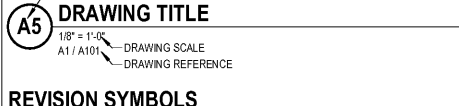
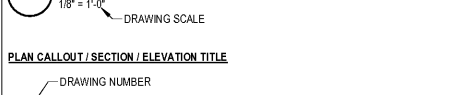
LIFE SAFETY SYSTEM REQUIREMENTS
THIS SECTION TO BE COMPLETED FOR ALL PROJECTS

LIFE SAFETY PLAN CHECKLIST FOR COMPLIANCE
THIS SECTION TO BE COMPLETED FOR ALL PROJECTS

Emergency Lighting:
[ ] No [ ] Yes
Exit Signs: [ ] No [ ] Yes
Fire Alarm: (NFPA 72-07) [ ] No [ ] Yes [ ] Partial
Smoke Detection Systems: [ ] No [ ] Yes [ ] Partial
Panic Hardware: [ ] No [ ] Yes
Life Safety Systems Generator: [ ] No [ ] Yes

PROGRESSIVE AE GENERAL SYMBOLOGY

DRAWING TITLES



PROGRESSIVE AE GENERAL ABBREVIATIONS

A/C AIR CONDITIONING
A/V AUDIO / VIDEO, AUDIO / VISUAL
ACC ACCESSIBLE, ACCESSIBILITY

MCM METAL COMPOSITE MATERIAL
MECH MECHANICAL
MFR MANUFACTURER, MANUFACTURED

OC ON CENTER
OD OUTSIDE DIAMETER
OF/CI OWNER FURNISHED, CONTRACTOR INSTALLED

PERF PERFORATED, PERFORATED
PERP PERPENDICULAR
PLAM PLASTIC LAMINATE

PRELIM PRELIMINARY
QUARRY TILE QUARRY TILE
R RISER

RD ROOF DRAIN, ROAD
REF REFRIGERATOR
REQ REQUIRED, REQUIREMENT

SCHED SCHEDULED
SH SHOWER
SIM SIMILAR

SIP STRUCTURAL INSULATED PANEL
SOG SLAB ON GRADE
SPEC SPECIFICATION

SPKLR SPRINKLER
SQA SQUARE
STC SOUND TRANSMISSION COEFFICIENT

STD STANDARD
STOR STORAGE
STR STRUCTURAL

T TREAD
T&G TONGUE AND GROOVED
TEMP TEMPORARY

THK THICK, THICKNESS
TO TOP OF
TYP TYPICAL

UC UNDER COUNTER
UL UNDERWRITERS LABORATORY
UNO UNLESS NOTED OTHERWISE

UR URINAL
VCT VINYL COMPOSITION TILE
VERT VERTICAL, VERTICALLY

VTR VENT THROUGH ROOF
WC WATER CLOSET
WD WOOD

WV WINDOW
WP WORK POINT, WORKING POINT
WT WEIGHT

AAA AUTO CLUB GROUP
COLUMBUS, GA
PROJECT INFORMATION
G-001

Vertical text on the left edge of the page.

Vertical text on the left edge of the page.

Vertical text on the left edge of the page.

Vertical text on the left edge of the page.

Vertical text on the left edge of the page.

Vertical text on the left edge of the page.

Vertical text on the left edge of the page.

Vertical text on the left edge of the page.

Vertical text on the left edge of the page.

Vertical text on the left edge of the page.

Vertical text on the left edge of the page.

Vertical text on the left edge of the page.

Vertical text on the left edge of the page.

Vertical text on the left edge of the page.

Vertical text on the left edge of the page.

Vertical text on the left edge of the page.

Vertical text on the left edge of the page.

Vertical text on the left edge of the page.

Vertical text on the left edge of the page.

Vertical text on the left edge of the page.

Vertical text on the left edge of the page.

Vertical text on the left edge of the page.

Vertical text on the left edge of the page.

Vertical text on the left edge of the page.

Vertical text on the left edge of the page.

Vertical text on the left edge of the page.

Vertical text on the left edge of the page.

Vertical text on the left edge of the page.

Vertical text on the left edge of the page.

Vertical text on the left edge of the page.

Vertical text on the left edge of the page.

Vertical text on the left edge of the page.

Vertical text on the left edge of the page.

Vertical text on the left edge of the page.

Vertical text on the left edge of the page.

Vertical text on the left edge of the page.

Vertical text on the left edge of the page.

Vertical text on the left edge of the page.

Vertical text on the left edge of the page.

Vertical text on the left edge of the page.

Vertical text on the left edge of the page.

Vertical text on the left edge of the page.

Vertical text on the left edge of the page.

Vertical text on the left edge of the page.

Vertical text on the left edge of the page.

Vertical text on the left edge of the page.

Vertical text on the left edge of the page.

Vertical text on the left edge of the page.

Vertical text on the left edge of the page.

Vertical text on the left edge of the page.