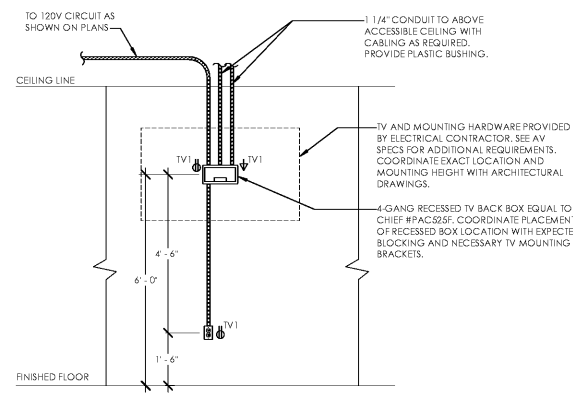
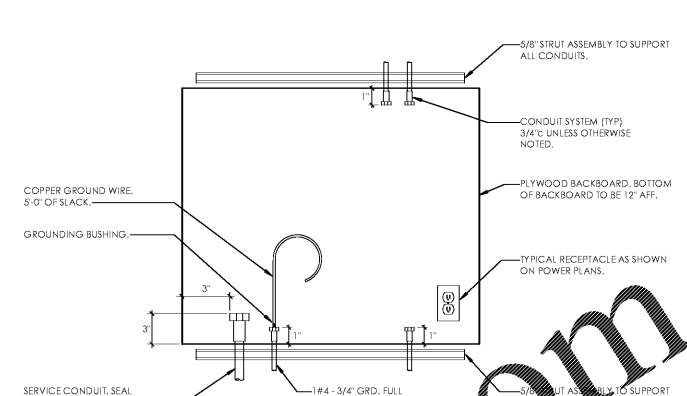


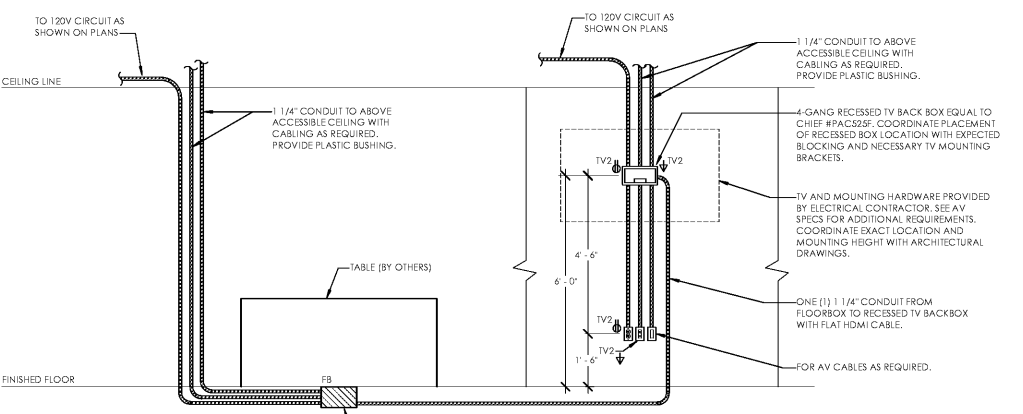
1 PROBATE JUDGE - AV DETAIL
 E0.5 NOT TO SCALE
 NOTES:
 1. VERIFY HEIGHT OF DISPLAY WITH ARCHITECT AN OWNER PRIOR TO ROUGH-IN.
 2. COORDINATE PLACEMENT OF RECESSED BOX LOCATION WITH EXPECTED BLOCKING AND NECESSARY TV MOUNTING BRACKETS.



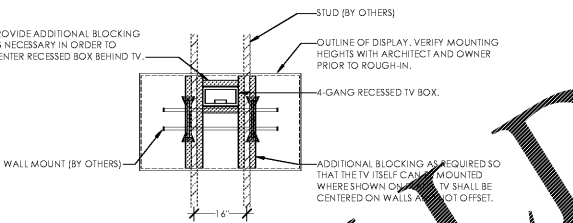
2 TYPICAL TV OUTLET DETAIL - 'TV1'
 E0.5 NOT TO SCALE
 NOTES:
 1. VERIFY HEIGHT OF DISPLAY WITH ARCHITECT AN OWNER PRIOR TO ROUGH-IN.
 2. COORDINATE PLACEMENT OF RECESSED BOX LOCATION WITH EXPECTED BLOCKING AND NECESSARY TV MOUNTING BRACKETS.



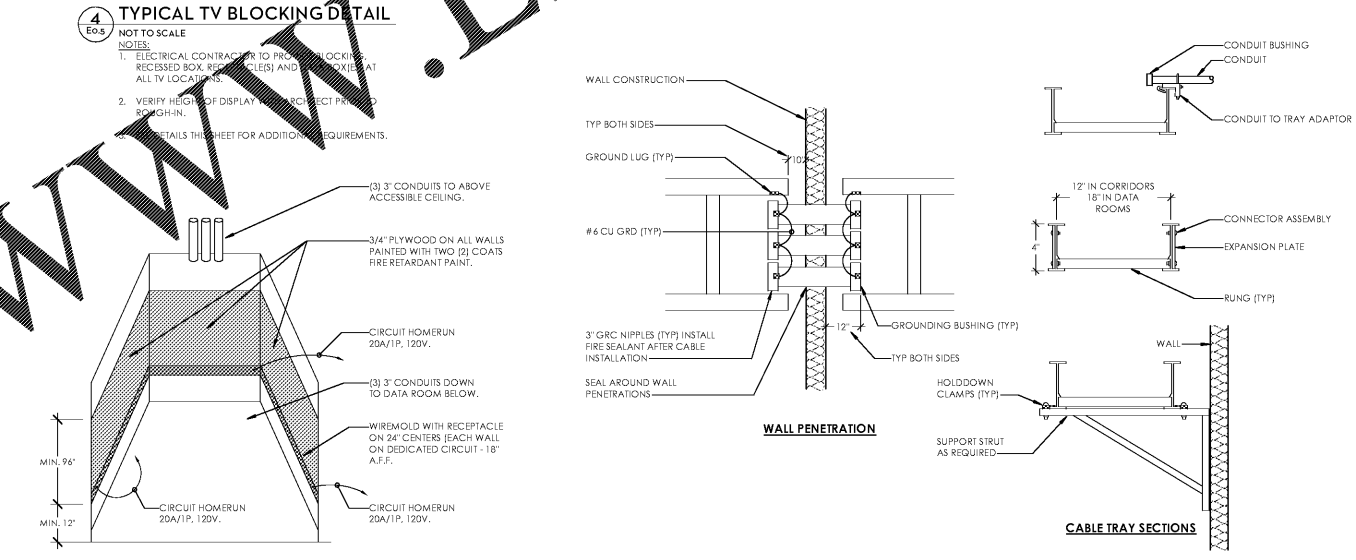
5 AUXILIARY SYSTEM BACKBOARD PROVISIONS DETAIL
 E0.5 NOT TO SCALE
 NOTES:
 1. ALL EMPTY CONDUITS SHALL BE FINISHED WITH PUTTY.
 2. ALL CONDUIT ENDS SHALL BE FINISHED WITH A PLASTIC BUSHING (CONNECTOR AND BUSHING ASSEMBLY SHALL BE USED).
 3. ALL CONDUITS FROM BELOW OR BELOW GRADE SHALL BE SEALED AFTER CABLE INSTALLATION. COMPPOUT FOR SEALING DUCTS AND CONDUIT SHALL HAVE A PUTTY-DRY CONSISTENT WORK WITH THE HANDS AT TEMPERATURES AS LOW AS 35 DEGREES F. SHALL NOT LEAK AT A TEMPERATURE OF 300 DEGREES F, AND SHALL NOT HARDEN MATERIAL WHEN EXPOSED TO THE AIR.
 4. PLYWOOD SHALL BE 3/4" EXTERIOR RATED AND CUT TO SIZE AS INDICATED. PAINT WITH 2 COATS OF FIRE-RETARDANT PAINT.
 5. THE GROUND CONNECTION SHALL BE MADE TO THE BUILDING GROUND SYSTEM TO ESTABLISH EQUAL POTENTIAL WITH THE GROUND ELECTRODE SYSTEM.



3 CONFERENCE ROOM - AV DETAIL
 E0.5 NOT TO SCALE
 NOTES:
 1. VERIFY HEIGHT OF DISPLAY WITH ARCHITECT AN OWNER PRIOR TO ROUGH-IN.
 2. COORDINATE PLACEMENT OF RECESSED BOX LOCATION WITH EXPECTED BLOCKING AND NECESSARY TV MOUNTING BRACKETS.

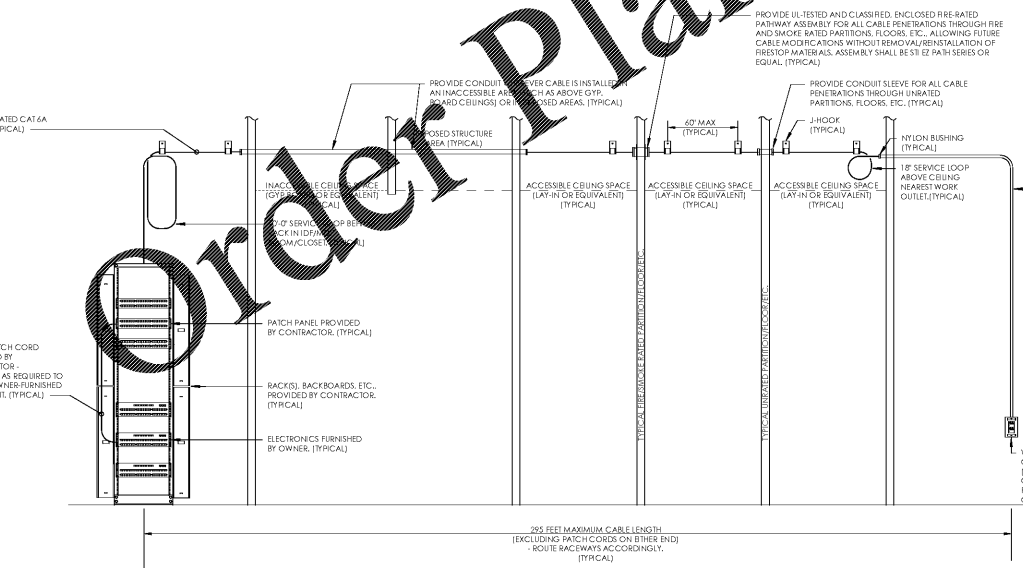


4 TYPICAL TV BLOCKING DETAIL
 E0.5 NOT TO SCALE
 NOTES:
 1. ELECTRICAL CONTRACTOR TO PROVIDE BLOCKING FOR RECESSED BOX RECEPTACLES AND ALL TV LOCATIONS.
 2. VERIFY HEIGHT OF DISPLAY WITH ARCHITECT PRIOR TO ROUGH-IN.
 3. DETAILS THIS SHEET FOR ADDITIONAL REQUIREMENTS.

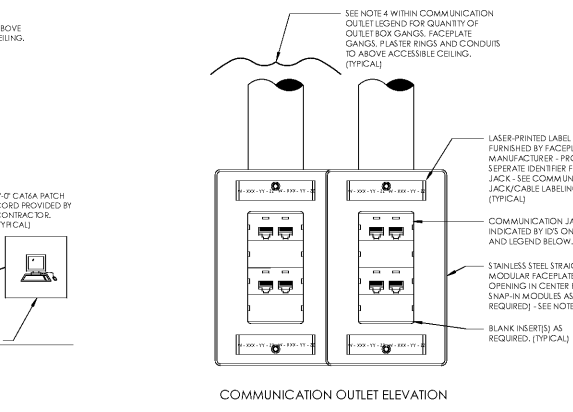


7 DATA ROOM TYPICAL LAYOUT
 E0.5 NOT TO SCALE

6 CABLE TRAY INSTALLATION DETAIL
 E0.5 NOT TO SCALE
 NOTE:
 1. PROVIDE THE PROPER FITTINGS, SPLICE & END PLATES, ELBOWS, OFFSETS, T-CONNECTIONS, DEVICES, ETC., AS REQUIRED FOR THE INSTALLATION SHOWN ON THE DRAWINGS.



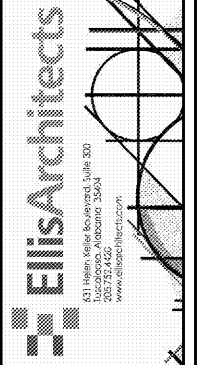
8 STRUCTURED CABLING HORIZONTAL TYPICAL WIRING DIAGRAM
 E0.5 NOT TO SCALE



9 COMMUNICATIONS OUTLET DETAIL
 E0.5 NOT TO SCALE



6 COMMUNICATION JACK/CABLE LABELING SCHEME



New Construction for:
BIBB COUNTY COURTHOUSE ANNEX
 8 Court Square West
 Centerville, Alabama



Copyright © 2019
 Elis Architects, Inc.
 Elis Architects, Inc. maintains all intellectual rights and ownership of all information contained on these documents. Elis Architects, Inc. and its consultants shall be deemed the authors and owners of their respective instruments of service and shall retain all common law, statutory and other reserved rights, including copyrights. This document shall not be reproduced without the written authorization of Elis Architects.
 Do Not Scale From Drawings.
 Contractor must verify all dimensions prior to construction.

JOB No.	18004
DOCUMENT	DATE
FINAL CDS	09/06/2019
DRAWN BY: JAM/JR	
ELECTRICAL DETAILS	
E0.5	

Order Plans @

WWW.WLDILLING.COM