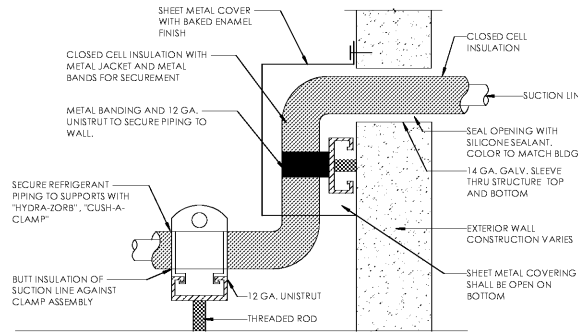


NOTE: PACKAGED UNIT TO BE MOUNTED ON 20" CURB FOR PROPER HORIZONTAL DISCHARGE DUCT CONNECTION. SEE DRAWINGS

1 PACKAGED HEAT PUMP UNIT INSTALLATION DETAIL
M1.3 NOT TO SCALE
(TYPICAL FOR PAC-1, PH-1 - THRU 3)

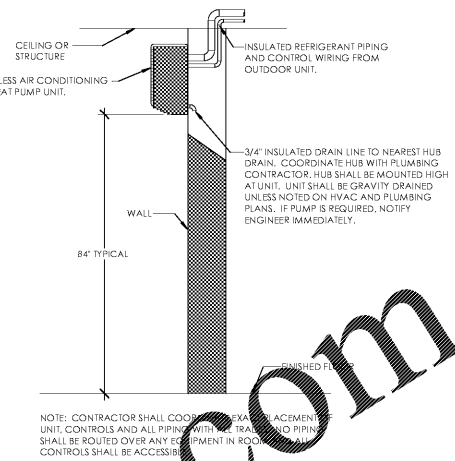
NOTE LEGEND: (THIS DETAIL ONLY)

- 4" LEVEL CONCRETE PAD BY GENERAL CONTRACTOR. COORDINATE EXACT LOCATION PRIOR TO INSTALLING EQUIPMENT.
- PROVIDE 1" COPPER CONDENSATE PIPE. CONDENSATE IS TO SPILL ON SPLASH BLOCK. SEE DETAIL FOR SPLASH BLOCK AND DRYWELL PIPING.
- UNISTRUT PIPE SUPPORT. SUPPORT PIPING EVERY 3'-0" MAX. SEE DETAIL.
- PACKAGED HEAT PUMP UNIT. (SEE SPECIFICATIONS)
- FLEXIBLE CONNECTOR FOR DUCTWORK. (MIN. 4 SLACK ACROSS)
- SMOKE DETECTOR. PROVIDE ON ALL UNITS 2000 CFM OR GREATER. UNIT SHALL BE WIRED TO SHUT DOWN UPON DETECTION OF SMOKE.
- SUPPLY AIR DUCTWORK. INTERNALLY LINED AND COVER WITH ALUMINUM JACKET. PROVIDE WATER TIGHT SEAL.
- RETURN AIR DUCTWORK. INTERNALLY LINED AND COVER WITH ALUMINUM JACKET. PROVIDE WATER TIGHT SEAL.



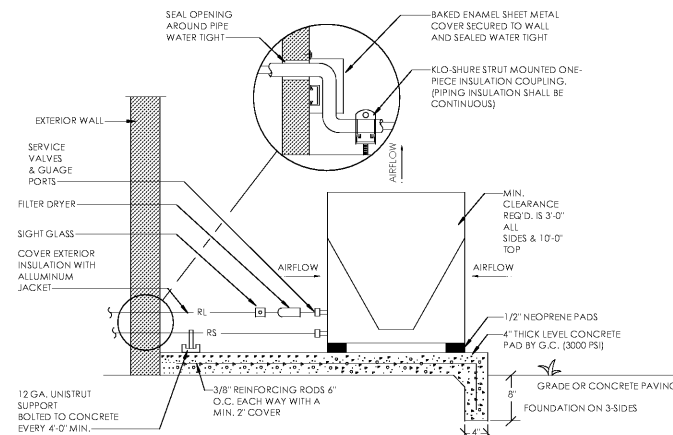
NOTE: LIQUID LINE SIMILAR

2 REFRIGERANT PIPE SUPPORT AT WALL DETAIL
M1.3 NOT TO SCALE

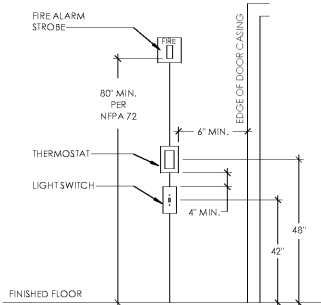


NOTE: CONTRACTOR SHALL COORDINATE WITH PLUMBING CONTRACTOR. ALL PIPING WITH TRAIL AND PIPING SHALL BE ROUTED OVER ANY EQUIPMENT IN ROOM. CONTROLS SHALL BE ACCESSIBLE.

3 AIR CONDITIONING UNIT DETAIL
M1.3 NOT TO SCALE

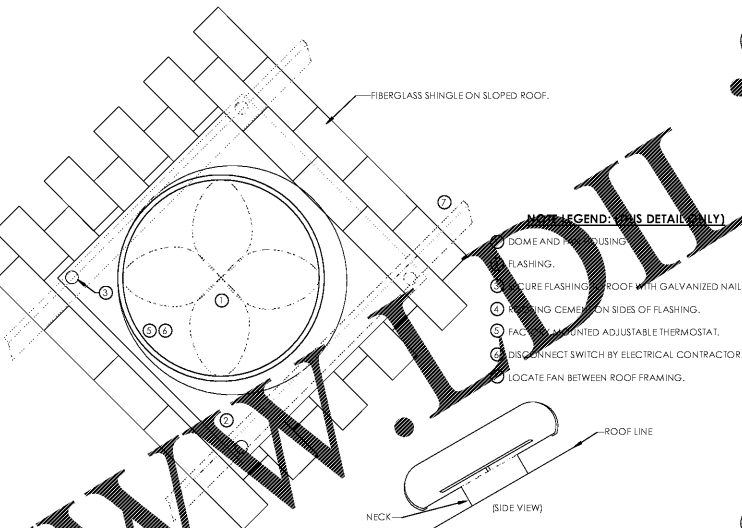


4 MOUNTED TO GRADE CONDENSING UNIT DETAIL
M1.3 NOT TO SCALE

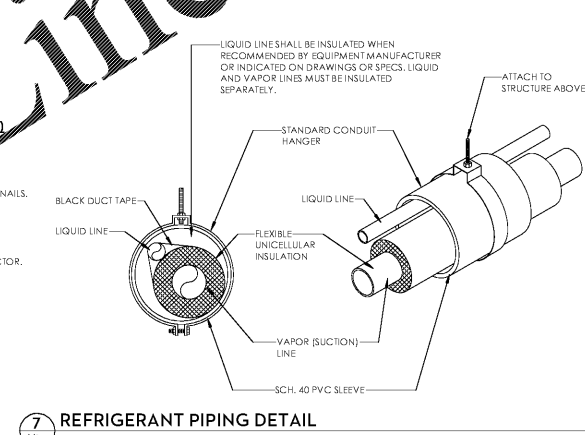


NOTES:
1. THERMOSTAT SHALL BE MOUNTED PER A.D.A. STANDARDS
2. THE LIGHT SWITCH MAY NOT APPLY IN ALL CASES
3. IF THE THERMOSTAT IS SHOWN NEAR A CORNER IN A ROOM, THEN THE DOOR EDGE REQUIREMENT MAY NOT APPLY AND THE THERMOSTAT SHALL BE 12" FROM THE CORNER TO THE CENTER OF THE THERMOSTAT.
4. CONTRACTOR SHALL ROUTE CONDUIT AS REQUIRED TO ALLOW BOXES TO BE STACKED AS SHOWN. CONNECT TO SIDE OF ROUGH-IN BOXES IF REQUIRED.

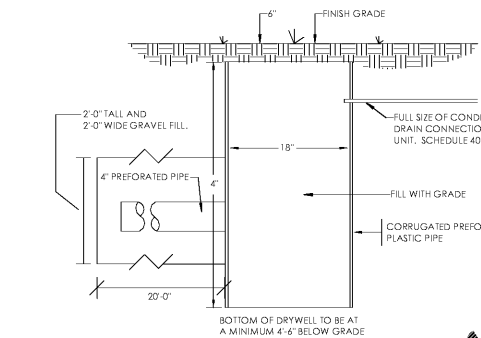
5 THERMOSTAT WALL MOUNTING DETAIL
M1.3 NOT TO SCALE



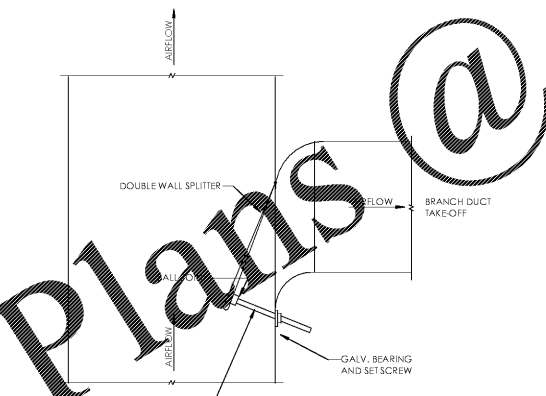
6 AIR VENTULATOR DETAIL
M1.3 NOT TO SCALE



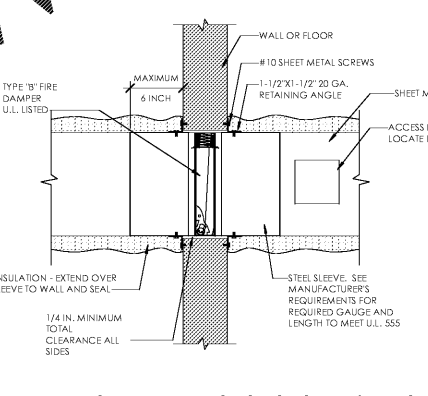
7 REFRIGERANT PIPING DETAIL
M1.3 NOT TO SCALE



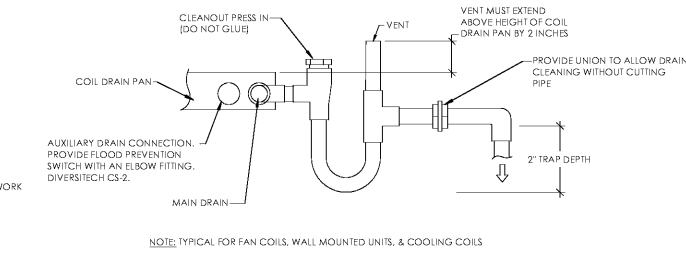
8 DRY WELL DETAIL
M1.3 NOT TO SCALE



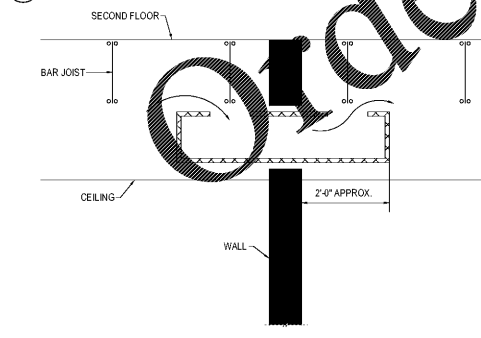
9 SPLITTER DAMPER DETAIL
M1.3 NOT TO SCALE



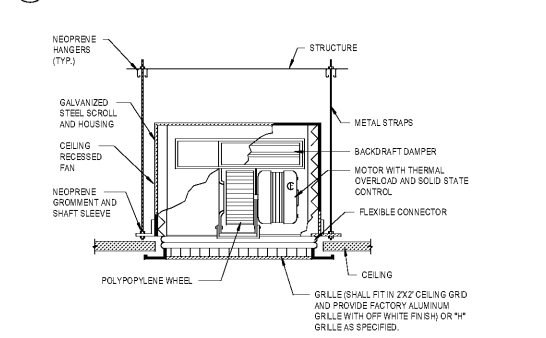
10 FIRE DAMPER DETAIL
M1.3 NOT TO SCALE



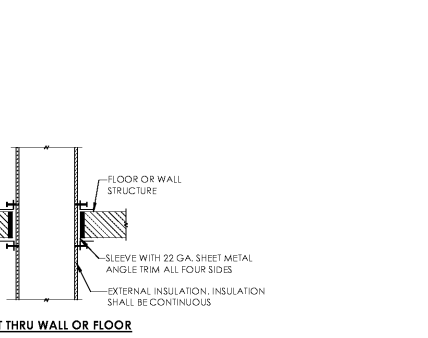
11 CONDENSATE DRAIN DETAIL
M1.3 NOT TO SCALE



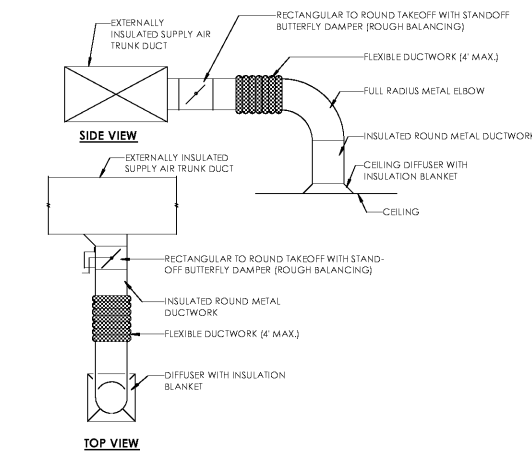
12 RETURN AIR JUMPER DUCT DETAIL
M1.3 NOT TO SCALE



13 CEILING EXHAUST FAN DETAIL
M1.3 NOT TO SCALE



14 DUCT THRU NON-RATED STRUCTURE DETAIL
M1.3 NOT TO SCALE



15 DIFFUSER RUNOUT DETAIL
M1.3 NOT TO SCALE



Copyright © 2019
Ellis Architects, Inc.
Ellis Architects, Inc. maintains all intellectual rights and ownership of all information contained on these documents. Ellis Architects, Inc. and its consultants shall be deemed the authors and owners of their respective instruments of service and shall retain all common law, statutory and other reserved rights, including copyrights. This document shall not be reproduced without the written authorization of Ellis Architects.
Do Not Scale From Drawings.
Contractor must verify all dimensions prior to construction.

JOB No.	18004
DOCUMENT	DATE
BID SET:	09/06/2019
DRAWN BY:	Author

MECHANICAL DETAILS
M1.3

Order Plans @

WWW.IDIline.com