

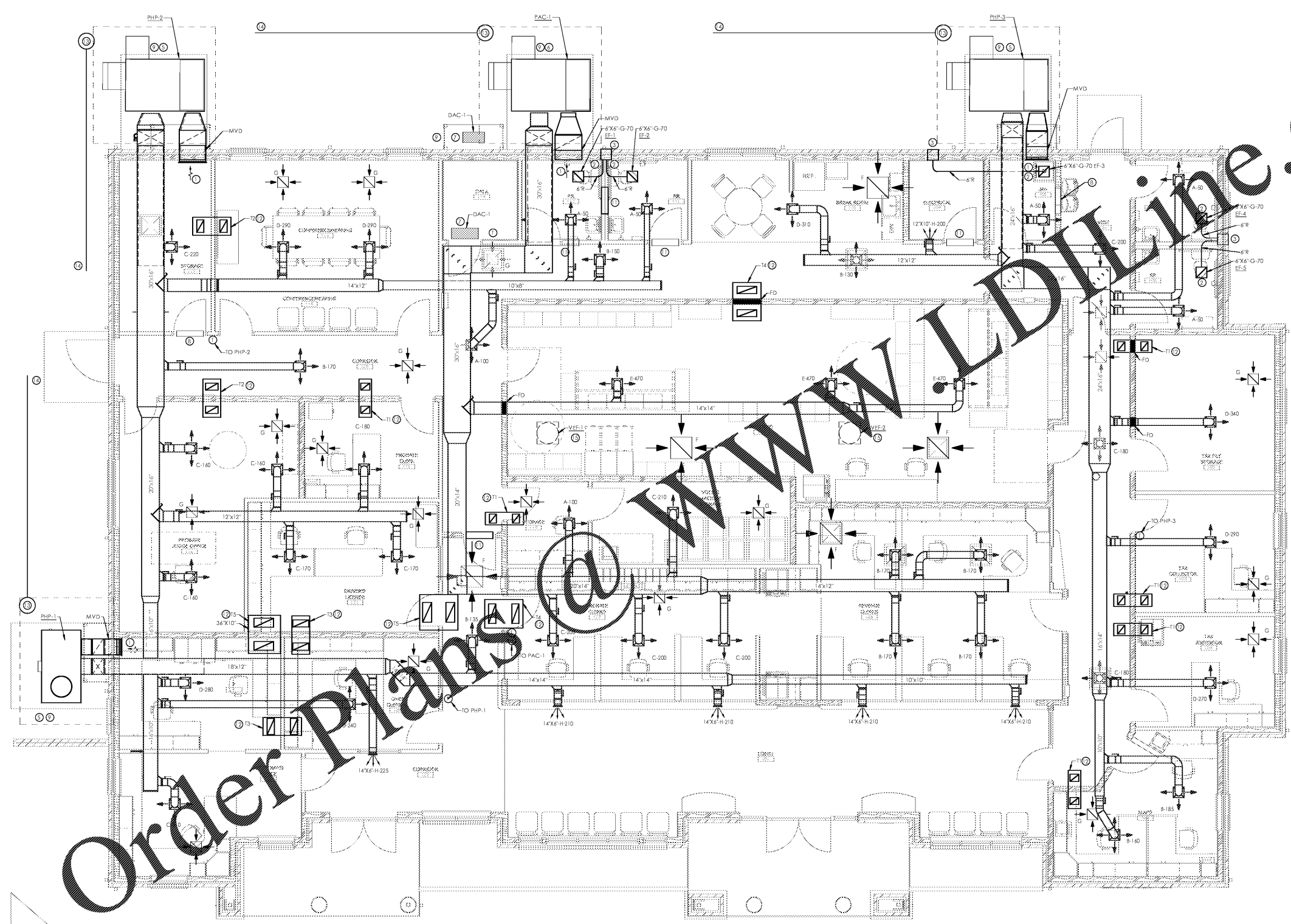
Copyright © 2019
 Ellis Architects, Inc.
 Ellis Architects, Inc. maintains all intellectual rights and ownership of all information contained on these documents. Ellis Architects, Inc. and its consultants shall be deemed the authors and owners of their respective instruments of service and shall retain all common law, statutory and other reserved rights, including copyrights. This document shall not be reproduced without the written authorization of Ellis Architects.

Do Not Scale From Drawings.
 Contractor must verify all dimensions prior to construction.

JOB No.	18004
DOCUMENT	DATE
BID SET:	09/06/2019
DRAWN BY:	WEC
FLOOR PLAN - MECHANICAL	

M1.1

- GENERAL NOTES:**
1. VERIFY LOCATION OF ALL THERMOSTATS AND WALL CONTROLS WITH ARCHITECT BEFORE INSTALLATION.
 2. COORDINATE DUCTWORK WITH ALL TRADES TO AVOID CONFLICT.
 3. MECHANICAL CONTRACTOR SHALL PROVIDE PROPER SERVICE CLEARANCE FOR EACH PIECE OF MECHANICAL EQUIPMENT REQUIRING SERVICE.
- KEYED NOTES:**
1. OPEN ENDED DUCT STUBBED INTO CEILING RETURN AIR PLENUM.
 2. COMPLETE AND OPERATIONAL CEILING EXHAUST FAN. BRICK VENT MOUNTED IN WALL WITH PLENUM CONNECTED TO BACK SIDE.
 3. CEILING EXHAUST FAN, 6" ROUND DUCT UP THRU ROOF WITH ROOF CAP.
 4. COMPLETE AND OPERATIONAL PACKAGED HEAT PUMP WITH AN OUTSIDE AIR ECONOMIZER.
 5. COMPLETE AND OPERATIONAL PACKAGED AIR CONDITIONING UNIT WITH HOT GAS REHEAT AND AN OUTSIDE AIR ECONOMIZER.
 6. COMPLETE AND OPERATIONAL SPLIT SYSTEM DUCTLESS AIR CONDITIONING UNIT.
 7. 30"X22" RETURN AIR OPENING ABOVE CEILING. VERIFY EXACT LOCATION WITH ARCHITECT BEFORE POURING. THICKEN PAD TO FILL WHERE THE GRADE SLOPES. REFER TO CIVIL DRAWINGS FOR ELEVATION CHANGES.
 8. NOT USED.
 9. 24"X12" OPENING IN WALL ABOVE CEILING.
 10. RETURN AIR TRANSFER DUCT ABOVE CEILING. SEE DETAIL.
 11. DRY WELL SEE DETAIL.
 12. FIELD LINE.
 13. COMPLETE AND OPERATIONAL PACKAGED AIR CONDITIONING UNIT WITH HOT GAS REHEAT AND AN OUTSIDE AIR ECONOMIZER. COILS SHALL BE DASHED. PERFORMANCE: 14.0 EER, 1.0 IN. STATIC PRESSURE. MIN. AN. 3.55. 120V - 1 PHASE. MOUNT IN COIL ROOM. TWO PLACES. SET THERMOSTAT TO 68 DEGREES. 90 DEGREES.



1 FLOOR PLAN - MECHANICAL
 1/4" = 1'-0"

