

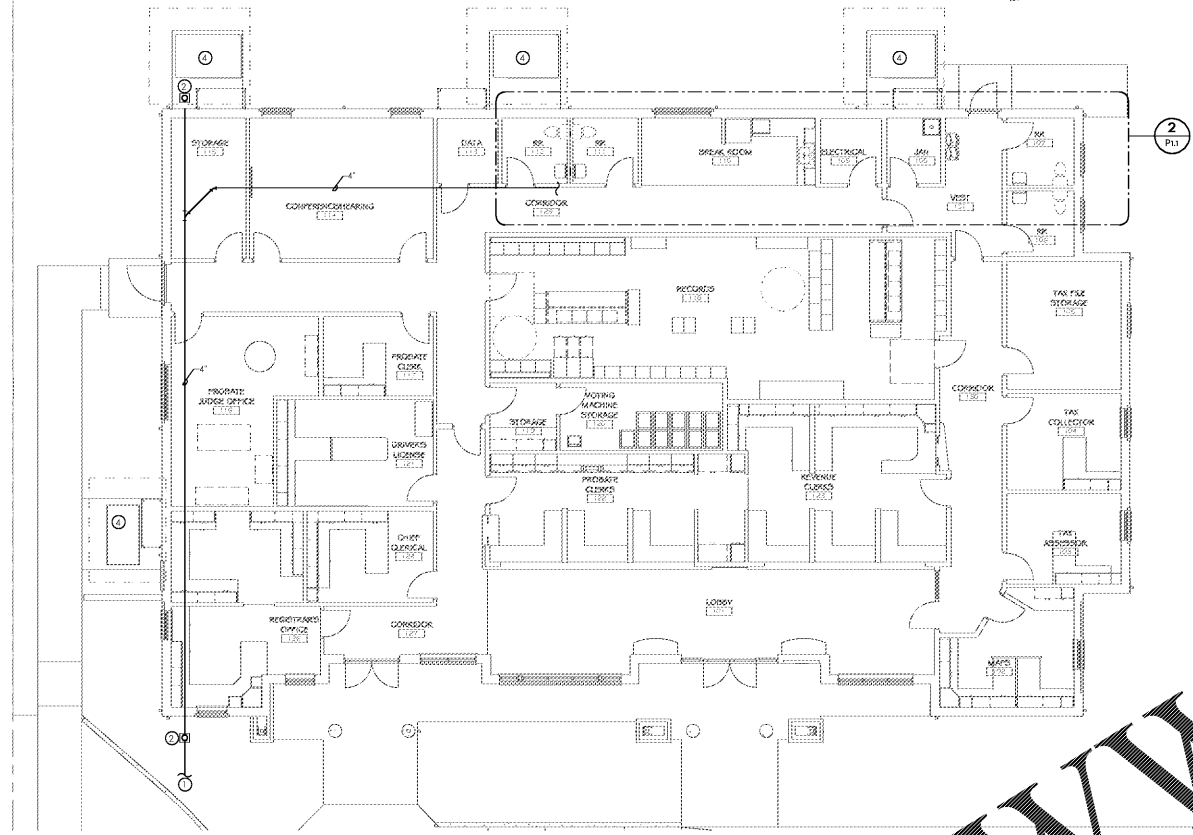
KEYED NOTES (THIS SHEET ONLY)

1. SEE SITE UTILITY PLAN FOR CONTINUATION.
2. C.O.T.G. (SET IN 18" X 18" X 6" CONCRETE PAD WITH TOOLED EDGES. PROVIDE BRASS PLUG.
3. W.C.O.
4. MECHANICAL UNIT (SEE MECHANICAL DRAWINGS), COORDINATE EXACT LOCATION WITH MECHANICAL CONTRACTOR.
5. ELECTRICAL PANEL, MAINTAIN MINIMUM 36" CLEARANCE IN FRONT OF PANELS. PIPING SHALL NOT RUN ABOVE PANEL. COORDINATE WITH ELECTRICAL CONTRACTOR. SEE ELECTRICAL DRAWINGS.
6. 3" F.D. PROVIDE TRAP GUARD.
7. 2" V.I.R.
8. 4" V.I.R.

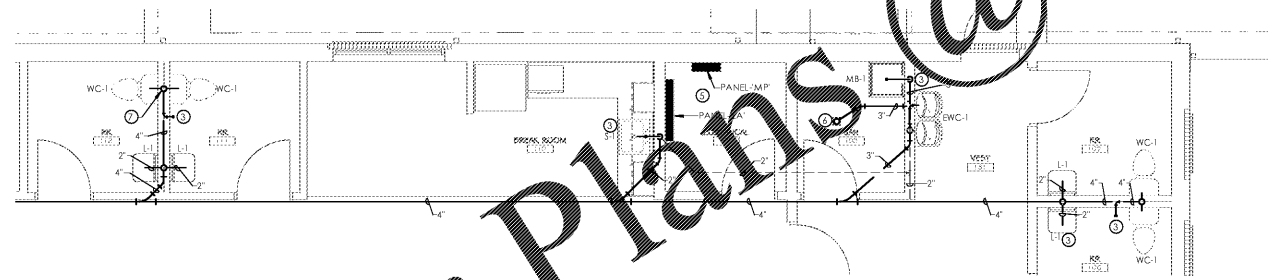
VENTS THROUGH ROOF MUST BE LOCATED MINIMUM OF 10'-0" FROM ANY OUTSIDE AIR INTAKE. COORDINATE WITH MECHANICAL CONTRACTOR AND WITH ROOFING CONTRACTOR.

PLUMBER SHALL COORDINATE WITH GENERAL CONTRACTOR ALL OPENINGS REQUIRED FOR PLUMBING SYSTEMS TO EXTEND FLOOR TO FLOOR.

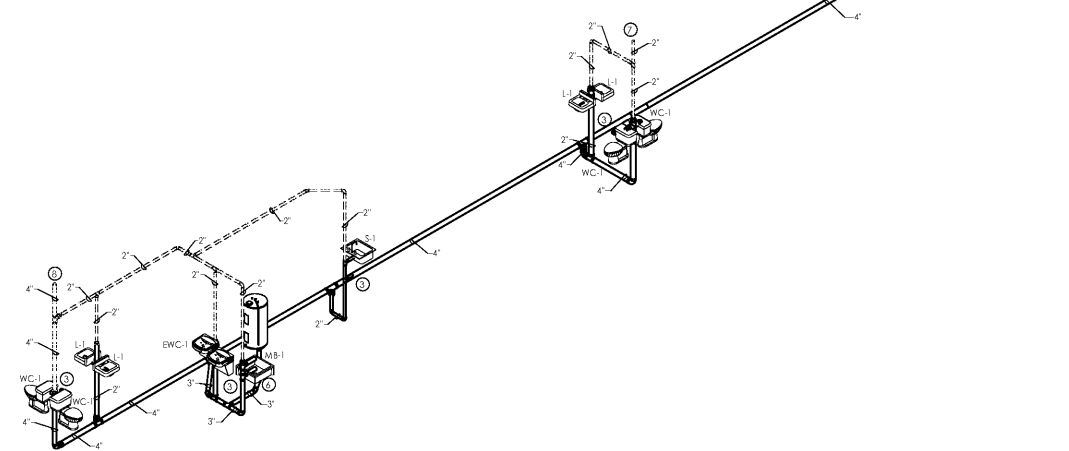
SLEEVE ALL PENETRATIONS OF STRUCTURE BELOW GRADE. PROVIDE CLEARANCE AROUND PIPES FOR BUILDING EXPANSION AND CONTRACTION. COORDINATE WITH STRUCTURAL CONTRACTOR AND GENERAL CONTRACTOR.



1 FLOOR PLAN - WASTE & VENT
1/8" = 1'-0"



2 ENLARGED FLOOR PLAN - WASTE & VENT
1/4" = 1'-0"



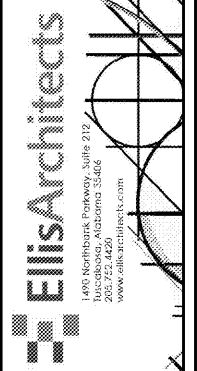
3 WASTE PIPING - RISER DIAGRAM - W1

SCALE: 1/8" = 1'-0"



WWW.LDILine.com

Order Plans @



New Construction for:
BIBB COUNTY COURTHOUSE ANNEX
8 Court Square West
Centreville, Alabama



Copyright © 2019
Ellis Architects, Inc.

Ellis Architects, Inc. maintains all intellectual rights and ownership of all information contained on these documents. Ellis Architects, Inc. and its consultants shall be deemed the authors and owners of their respective instruments of service and shall retain all common law, statutory and other reserved rights, including copyrights. This document shall not be reproduced without the written authorization of Ellis Architects.

Do Not Scale From Drawings.
Contractor must verify all dimensions prior to construction.

JOB No.	18004
DOCUMENT	DATE
BID SET:	09/06/2019

DRAWN BY: WEC
FLOOR PLAN - PLUMBING
WASTE AND VENT PIPING
PLAN

P1.1