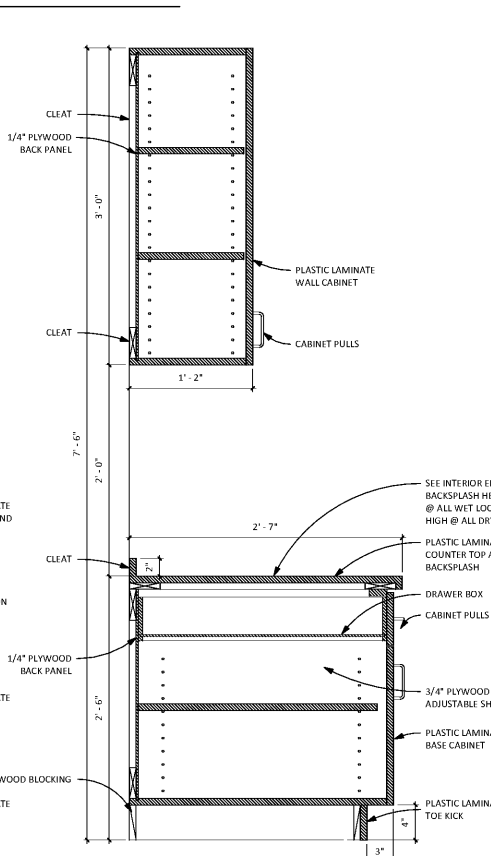
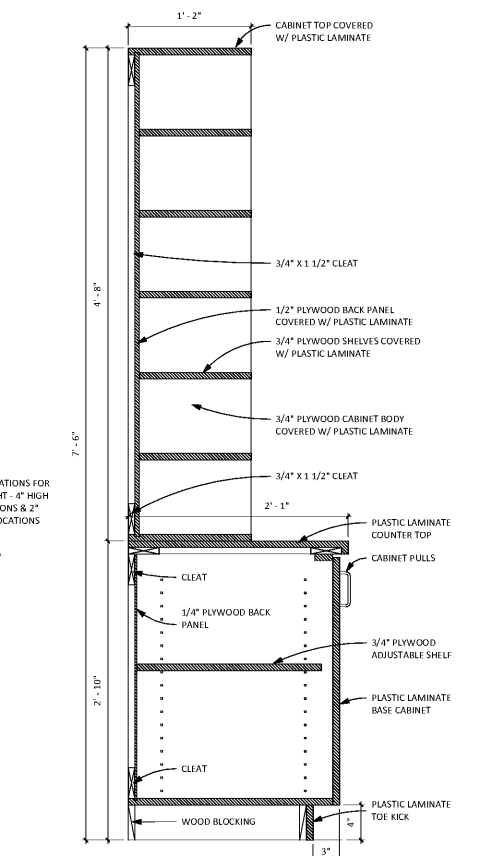


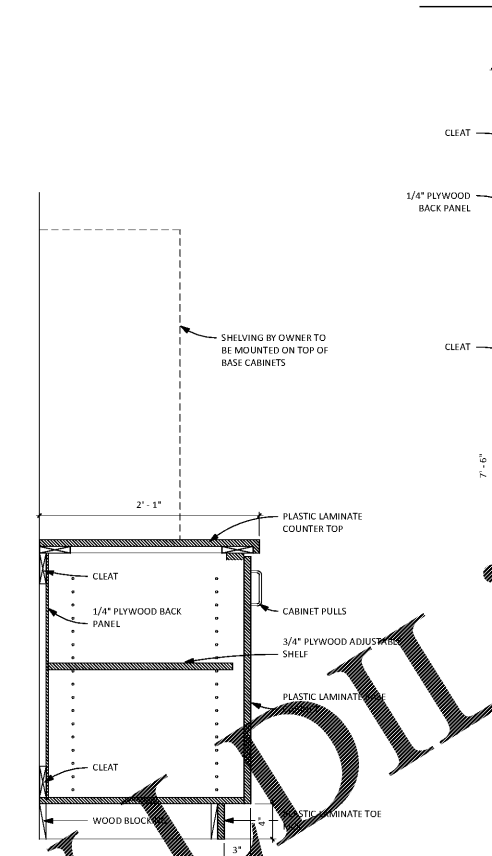
1 SINK CABINET @ BREAK ROOM 110  
 A11.1 1 1/2" = 1'-0"



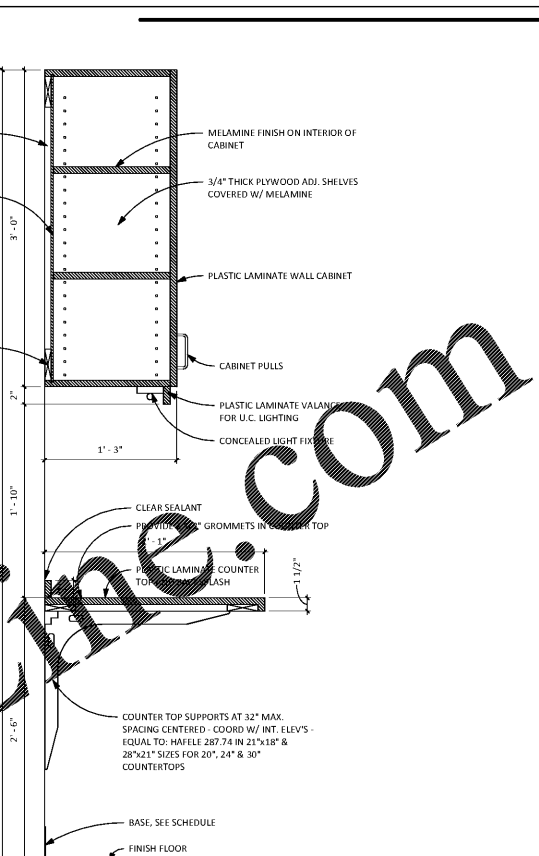
2 BASE/WALL CABINETS @ STORAGE 119  
 A11.1 1 1/2" = 1'-0"



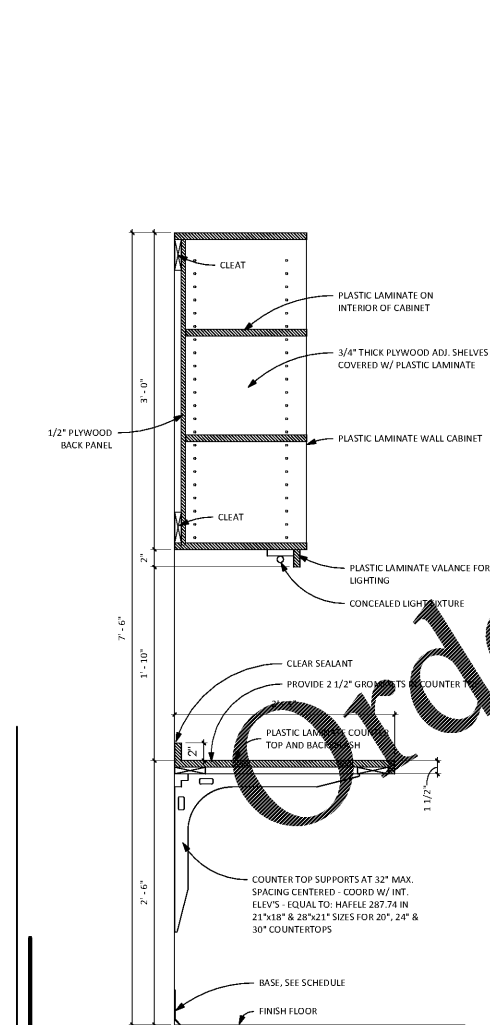
3 CABINET & CUBBIES @ PROBATE CLERKS  
 A11.1 1 1/2" = 1'-0"



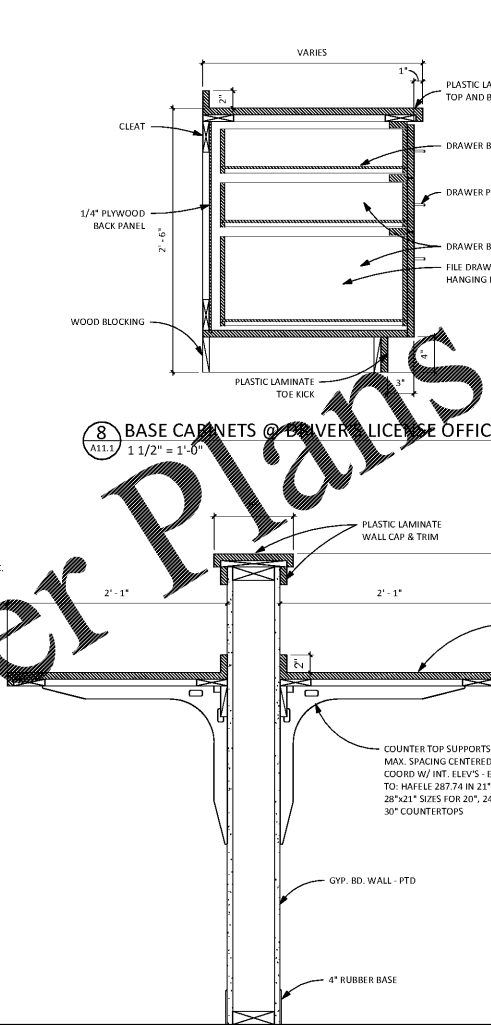
4 BASE CABINET @ RECORDS 118  
 A11.1 1 1/2" = 1'-0"



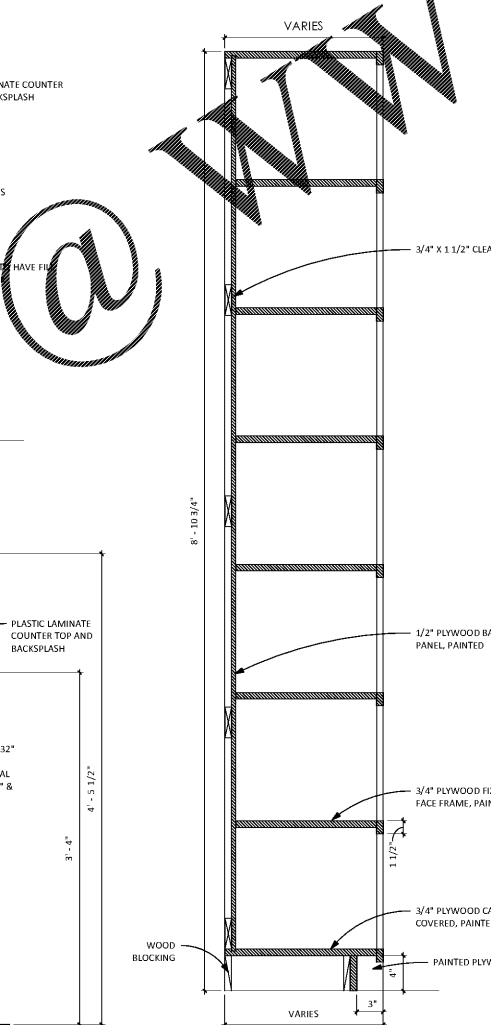
5 DESK & WALL CABINETS @ REGISTRAR'S OFFICE  
 A11.1 1 1/2" = 1'-0"



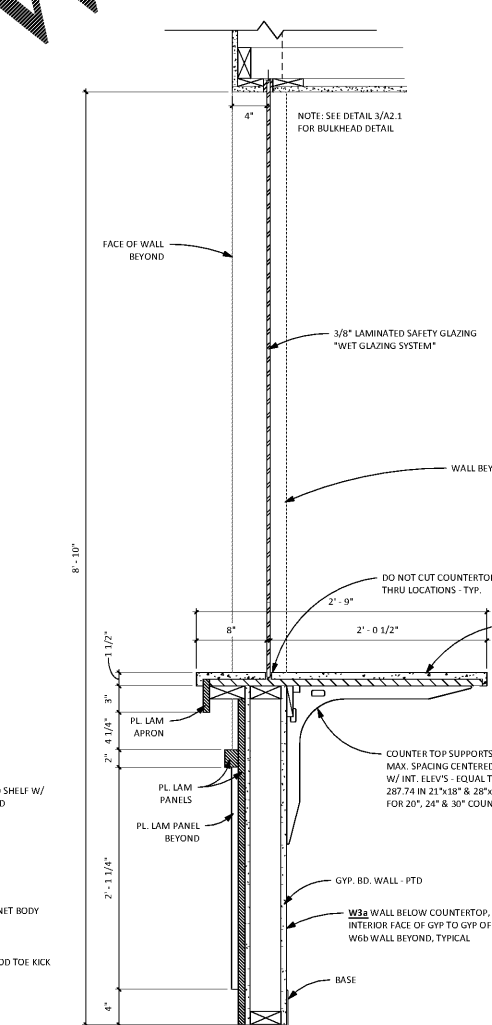
6 DESK & WALL SHELVES @ REGISTRAR'S OFFICE  
 A11.1 1 1/2" = 1'-0"



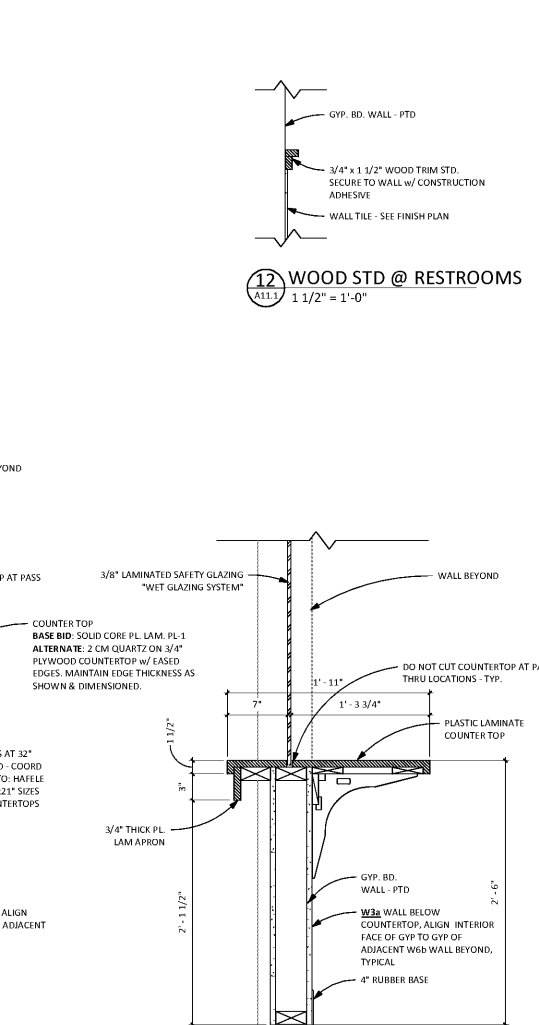
7 HALF WALL @ CLERK DESKS  
 A11.1 1 1/2" = 1'-0"



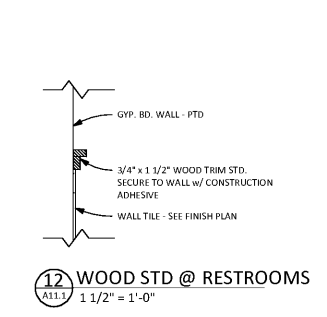
9 SHELVING @ TAX FILE STORAGE 105  
 A11.1 1 1/2" = 1'-0"



10 TRANSACTION COUNTER @ LOBBY 101  
 A11.1 1 1/2" = 1'-0"  
 NOTE: REFERENCE ALTERNATE FOR QUARTZ COUNTERTOP OPTION



11 TRANSACTION COUNTER @ CORRIDOR 130  
 A11.1 1 1/2" = 1'-0"



12 WOOD STD @ RESTROOMS  
 A11.1 1 1/2" = 1'-0"

Order Plans @ WWW.WJDILLINE.COM