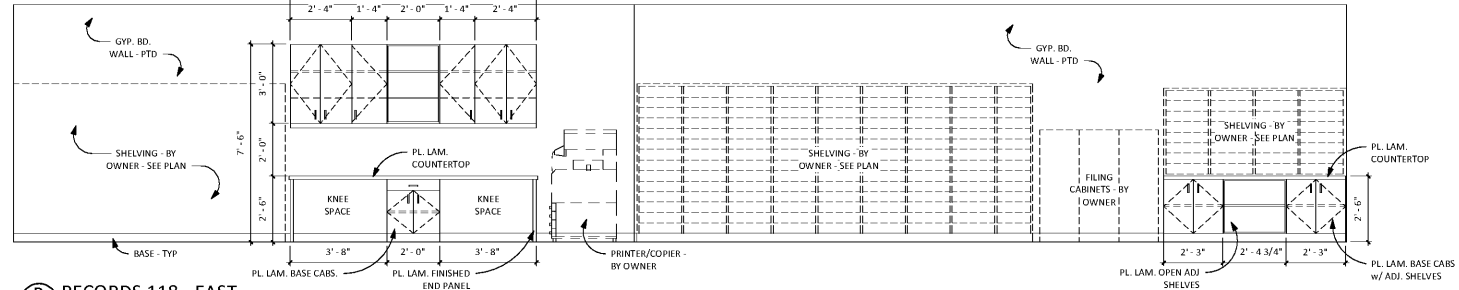
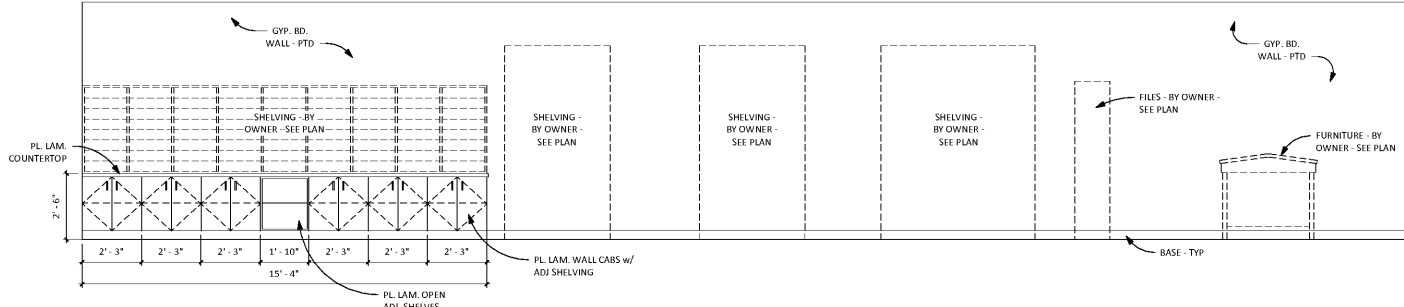


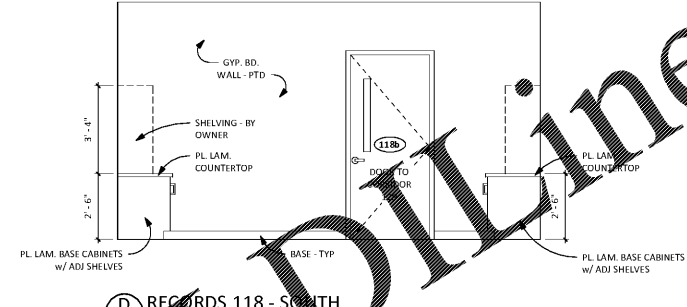
**A RECORD 118 - NORTH**  
A10.4 3/8" = 1'-0"



**B RECORDS 118 - EAST**  
A10.4 3/8" = 1'-0"

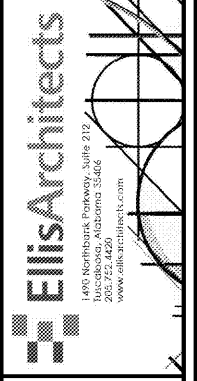


**C RECORDS 118 - WEST**  
A10.4 3/8" = 1'-0"



**D RECORDS 118 - SOUTH**  
A10.4 3/8" = 1'-0"

Order Plans @ www.LDOnline.com



New Construction for:  
**BIBB COUNTY COURTHOUSE ANNEX**  
8 Court Square West  
Centreville, Alabama



Copyright © 2019  
Ellis Architects, Inc.  
Ellis Architects, Inc. maintains all intellectual rights and ownership of all information contained on these documents. Ellis Architects, Inc. and its consultants shall be deemed the authors and owners of their respective instruments of service and shall retain all common law, statutory and other reserved rights, including copyrights. This document shall not be reproduced without the written authorization of Ellis Architects.  
Do Not Scale From Drawings.  
Contractor must verify all dimensions prior to construction.

JOB No.	18004
DOCUMENT	DATE
BID SET:	09/06/2019
DRAWN BY: Author	
INTERIOR ELEVATIONS	
<b>A10.4</b>	