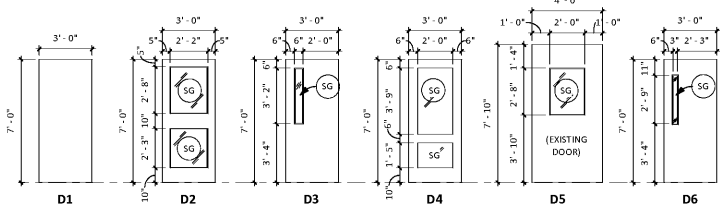
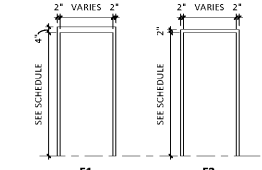


DOOR AND FRAME SCHEDULE											
DOOR NUMBER	DOOR			FRAME					FIRE RATING	REMARKS	
	WIDTH	HEIGHT	THICKNESS	DOOR TYPE	DOOR MATERIAL	DOOR FINISH	FRAME TYPE	FRAME MATERIAL			FRAME FINISH
101	6'-0" (DOUBLE)	7'-10"	1 3/4"	D4	ALUM	PRE	H	ALUM	TY		A,C,E,F
102	3'-0"	7'-0"	1 3/4"	D2	FWD	F-STAIN	F2	H.M.	PAINT		B,D
103	3'-0"	7'-0"	1 3/4"	D2	FWD	F-STAIN	F2	H.M.	PAINT		B,D
104	3'-0"	7'-0"	1 3/4"	D2	FWD	F-STAIN	F2	H.M.	PAINT		B,D
105	3'-0"	7'-0"	1 3/4"	D6	FWD	F-STAIN	F2	H.M.	PAINT	1-HR	B,D
106	3'-0"	7'-0"	1 3/4"	D1	FWD	F-STAIN	F2	H.M.	PAINT		D
107	3'-0"	7'-0"	1 3/4"	D1	FWD	F-STAIN	F2	H.M.	PAINT		D
108	3'-0"	7'-0"	1 3/4"	D1	FWD	F-STAIN	F2	H.M.	PAINT		D
109	3'-0"	7'-0"	1 3/4"	D1	FWD	F-STAIN	F2	H.M.	PAINT		D
111	3'-0"	7'-0"	1 3/4"	D1	FWD	F-STAIN	F2	H.M.	PAINT		D
112	3'-0"	7'-0"	1 3/4"	D1	FWD	F-STAIN	F2	H.M.	PAINT		D
113	3'-0"	7'-0"	1 3/4"	D1	FWD	F-STAIN	F2	H.M.	PAINT		D
114a	3'-0"	7'-0"	1 3/4"	D1	FWD	F-STAIN	F2	H.M.	PAINT		D
114b	3'-0"	7'-0"	1 3/4"	D1	FWD	F-STAIN	F2	H.M.	PAINT		D
115	3'-0"	7'-0"	1 3/4"	D1	FWD	F-STAIN	F2	H.M.	PAINT		D
116	3'-0"	7'-0"	1 3/4"	D1	FWD	F-STAIN	F2	H.M.	PAINT		D
117	3'-0"	7'-0"	1 3/4"	D1	FWD	F-STAIN	F2	H.M.	PAINT		D
118a	3'-0"	7'-0"	1 3/4"	D6	FWD	F-STAIN	F2	H.M.	PAINT	1-HR	B,D
118b	3'-0"	7'-0"	1 3/4"	D6	FWD	F-STAIN	F2	H.M.	PAINT	1-HR	B,D, DEG, EAC
119	3'-0"	7'-0"	1 3/4"	D1	FWD	F-STAIN	F2	H.M.	PAINT		D
120	3'-0"	7'-0"	1 3/4"	D1	FWD	F-STAIN	F2	H.M.	PAINT		D
121	3'-0"	7'-0"	1 3/4"	D2	FWD	F-STAIN	F2	H.M.	PAINT		B,D
122	3'-0"	7'-0"	1 3/4"	D2	FWD	F-STAIN	F2	H.M.	PAINT		B,D
123	3'-0"	7'-0"	1 3/4"	D2	FWD	F-STAIN	F2	H.M.	PAINT		B,D
124	3'-0"	7'-0"	1 3/4"	D2	FWD	F-STAIN	F2	H.M.	PAINT		B,D
126	3'-0"	7'-0"	1 3/4"	D2	FWD	F-STAIN	F2	H.M.	PAINT		B,D
127	3'-0"	7'-0"	1 3/4"	D3	FWD	F-STAIN	F2	H.M.	PAINT		B,D,H
128	6'-0" (DOUBLE)	7'-10"	1 3/4"	D4	ALUM	PRE	G	ALUM	TY		A,C,E,F
129a	3'-0"	7'-0"	1 3/4"	D3	FWD	F-STAIN	F2	H.M.	PAINT		B,D,H
129b	4'-0"	7'-10"	1 3/4"	D5 (EXIST)	H.M.	(EXISTING)	F2	H.M.	PAINT		A,L,G; (EXISTING KEY PAD ACCESS TO BE REUSED)
130a	3'-0"	7'-0"	1 3/4"	D4	FWD	F-STAIN	J	ALUM	TY		B,D,E
130b	3'-0"	7'-0"	1 3/4"	D2	FWD	F-STAIN	F2	H.M.	PAINT		B,D
131	3'-0"	7'-0"	1 3/4"	D3	H.M.	PTD	F1	H.M.-G	PTD		A,E,H



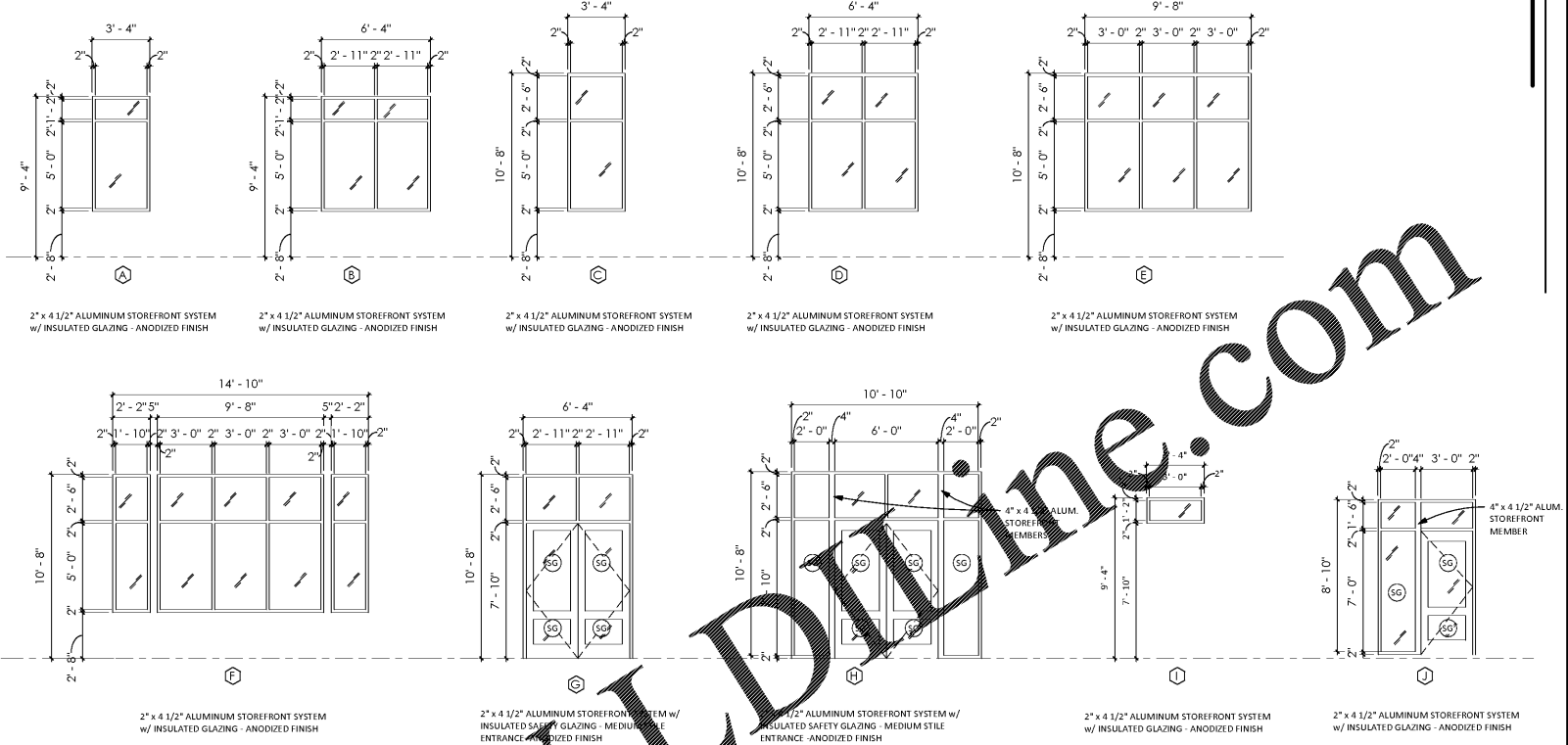
DOOR TYPES
 D1: 7'-0" x 3'-0"
 D2: 7'-0" x 3'-0" (with SG)
 D3: 7'-0" x 3'-0" (with SG)
 D4: 7'-0" x 3'-0" (with SG)
 D5: 7'-10" x 4'-0" (EXISTING DOOR)
 D6: 7'-0" x 3'-0" (FIRE RATED DOOR)



FRAME TYPES
 F1: 2" VARIES
 F2: 2" VARIES

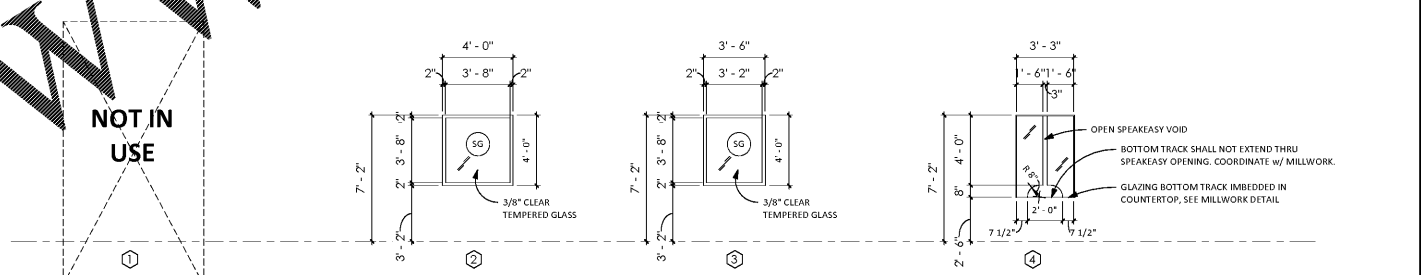
LEGEND & GENERAL NOTES	
ALUM - [ALUMINUM] ALUMINUM DOOR / ALUMINUM FRAME	DOOR AND FRAME GENERAL NOTES
HM - [HOLLOW METAL] PRIMED & PAINTED HOLLOW METAL DOORS & FRAMES	
HM-G - [HOLLOW METAL GALVANEAL] PRIMED & PAINTED HOLLOW METAL DOORS WITH GALVANEAL FINISH	A. ALL EXTERIOR DOORS SHALL BE INSULATED AND PROVIDED WITH THRESHOLDS AND WEATHERSTRIPPING.
FWD - [FLUSH WOOD DOOR] SOLID CORE WOOD DOOR	B. ALL GLASS IN INTERIOR WOOD DOORS SHALL BE FRAMED WITH WOOD STOP. SUNLESS METAL FRAMING IS REQUIRED FOR FIRE RATINGS.
PRE - [PRE-FINISHED] FACTORY APPLIED FINISH	C. ALL EXTERIOR ALUMINUM FRAMES SHALL BE PRE-FINISHED THERMALLY BROKEN WITH 1" INSULATED GLASS.
ANOD - [ANODIZED] FACTORY APPLIED FINISH	D. SEE INTERIOR FINISH SCHEDULE FOR WOOD DOOR STAIN COLOR AND HM FRAME PAINT COLOR.
PAINT - FIELD APPLIED PRIME AND PAINT FINISH	E. SEE EXTERIOR FINISH SCHEDULE FOR FRAME ANOD COLOR.
EAC - [ELECTRONIC ACCESS CONTROL KEYPAD] AT ALL DOORS INDICATED. PROVIDE DOOR HARDWARE FOR ELECTRONIC ACCESS CONTROL SYSTEM.	F. DOOR IS PART OF STOREFRONT SYSTEM.
TY - [FACTORY APPLIED FRAME FINISH]	G. EXISTING DOOR TO BE RECOVERED AND REFINISHED FROM EXISTING ANNEX BUILDING. FIELD VERIFY EXISTING FINISHES AND MATERIALS. FIELD VERIFY QUALITY OF USE. COORDINATE W/ OWNERS REPRESENTATIVE.
F-STAIN - [STAIN] FACTORY APPLIED STAIN	H. DOOR HARDWARE SHALL HAVE AGRATED CODES - B, C, D, E, F, G, I, J, K, L, M, N, O, P, Q, R, S, T, U, V, W, X, Y, Z, AA, AB, AC, AD, AE, AF, AG, AH, AI, AJ, AK, AL, AM, AN, AO, AP, AQ, AR, AS, AT, AU, AV, AW, AX, AY, AZ, BA, BB, BC, BD, BE, BF, BG, BH, BI, BJ, BK, BL, BM, BN, BO, BP, BQ, BR, BS, BT, BU, BV, BW, BX, BY, BZ, CA, CB, CC, CD, CE, CF, CG, CH, CI, CJ, CK, CL, CM, CN, CO, CP, CQ, CR, CS, CT, CU, CV, CW, CX, CY, CZ, DA, DB, DC, DD, DE, DF, DG, DH, DI, DJ, DK, DL, DM, DN, DO, DP, DQ, DR, DS, DT, DU, DV, DW, DX, DY, DZ, EA, EB, EC, ED, EE, EF, EG, EH, EI, EJ, EK, EL, EM, EN, EO, EP, EQ, ER, ES, ET, EU, EV, EW, EX, EY, EZ, FA, FB, FC, FD, FE, FF, FG, FH, FI, FJ, FK, FL, FM, FN, FO, FP, FQ, FR, FS, FT, FU, FV, FW, FX, FY, FZ, GA, GB, GC, GD, GE, GF, GG, GH, GI, GJ, GK, GL, GM, GN, GO, GP, GQ, GR, GS, GT, GU, GV, GW, GX, GY, GZ, HA, HB, HC, HD, HE, HF, HG, HH, HI, HJ, HK, HL, HM, HN, HO, HP, HQ, HR, HS, HT, HU, HV, HW, HX, HY, HZ, IA, IB, IC, ID, IE, IF, IG, IH, II, IJ, IK, IL, IM, IN, IO, IP, IQ, IR, IS, IT, IU, IV, IW, IX, IY, IZ, JA, JB, JC, JD, JE, JF, JG, JH, JI, JJ, JK, JL, JM, JN, JO, JP, JQ, JR, JS, JT, JU, JV, JW, JX, JY, JZ, KA, KB, KC, KD, KE, KF, KG, KH, KI, KJ, KK, KL, KM, KN, KO, KP, KQ, KR, KS, KT, KU, KV, KW, KX, KY, KZ, LA, LB, LC, LD, LE, LF, LG, LH, LI, LJ, LK, LL, LM, LN, LO, LP, LQ, LR, LS, LT, LU, LV, LW, LX, LY, LZ, MA, MB, MC, MD, ME, MF, MG, MH, MI, MJ, MK, ML, MM, MN, MO, MP, MQ, MR, MS, MT, MU, MV, MW, MX, MY, MZ, NA, NB, NC, ND, NE, NF, NG, NH, NI, NJ, NK, NL, NM, NN, NO, NP, NQ, NR, NS, NT, NU, NV, NW, NX, NY, NZ, OA, OB, OC, OD, OE, OF, OG, OH, OI, OJ, OK, OL, OM, ON, OO, OP, OQ, OR, OS, OT, OU, OV, OW, OX, OY, OZ, PA, PB, PC, PD, PE, PF, PG, PH, PI, PJ, PK, PL, PM, PN, PO, PP, PQ, PR, PS, PT, PU, PV, PW, PX, PY, PZ, QA, QB, QC, QD, QE, QF, QG, QH, QI, QJ, QK, QL, QM, QN, QO, QP, QQ, QR, QS, QT, QU, QV, QW, QX, QY, QZ, RA, RB, RC, RD, RE, RF, RG, RH, RI, RJ, RK, RL, RM, RN, RO, RP, RQ, RR, RS, RT, RU, RV, RW, RX, RY, RZ, SA, SB, SC, SD, SE, SF, SG, SH, SI, SJ, SK, SL, SM, SN, SO, SP, SQ, SR, SS, ST, SU, SV, SW, SX, SY, SZ, TA, TB, TC, TD, TE, TF, TG, TH, TI, TJ, TK, TL, TM, TN, TO, TP, TQ, TR, TS, TT, TU, TV, TW, TX, TY, TZ, UA, UB, UC, UD, UE, UF, UG, UH, UI, UJ, UK, UL, UM, UN, UO, UP, UQ, UR, US, UT, UY, UZ, VA, VB, VC, VD, VE, VF, VG, VH, VI, VJ, VK, VL, VM, VN, VO, VP, VQ, VR, VS, VT, VU, VV, VW, VX, VY, VZ, WA, WB, WC, WD, WE, WF, WG, WH, WI, WJ, WK, WL, WM, WN, WO, WP, WQ, WR, WS, WT, WU, WV, WW, WX, WY, WZ, XA, XB, XC, XD, XE, XF, XG, XH, XI, XJ, XK, XL, XM, XN, XO, XP, XQ, XR, XS, XT, XU, XV, XW, XX, XY, XZ, YA, YB, YC, YD, YE, YF, YG, YH, YI, YJ, YK, YL, YM, YN, YO, YP, YQ, YR, YS, YT, YU, YV, YW, YX, YZ, ZA, ZB, ZC, ZD, ZE, ZF, ZG, ZH, ZI, ZJ, ZK, ZL, ZM, ZN, ZO, ZP, ZQ, ZR, ZS, ZT, ZU, ZV, ZW, ZX, ZY, ZZ

ALUMINUM STOREFRONT SCHEDULE

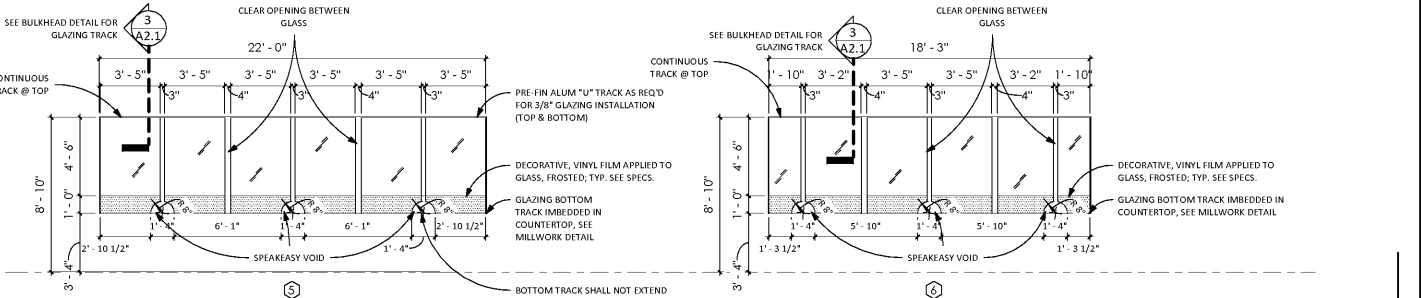


ALUMINUM STOREFRONT SCHEDULE
 A: 2" x 4 1/2" ALUMINUM STOREFRONT SYSTEM w/ INSULATED GLAZING - ANODIZED FINISH
 B: 2" x 4 1/2" ALUMINUM STOREFRONT SYSTEM w/ INSULATED GLAZING - ANODIZED FINISH
 C: 2" x 4 1/2" ALUMINUM STOREFRONT SYSTEM w/ INSULATED GLAZING - ANODIZED FINISH
 D: 2" x 4 1/2" ALUMINUM STOREFRONT SYSTEM w/ INSULATED GLAZING - ANODIZED FINISH
 E: 2" x 4 1/2" ALUMINUM STOREFRONT SYSTEM w/ INSULATED GLAZING - ANODIZED FINISH
 F: 2" x 4 1/2" ALUMINUM STOREFRONT SYSTEM w/ INSULATED GLAZING - ANODIZED FINISH
 G: 2" x 4 1/2" ALUMINUM STOREFRONT SYSTEM w/ INSULATED SAFETY GLAZING - MEDIUM STILE ENTRANCE - ANODIZED FINISH
 H: 2" x 4 1/2" ALUMINUM STOREFRONT SYSTEM w/ INSULATED SAFETY GLAZING - MEDIUM STILE ENTRANCE - ANODIZED FINISH
 I: 2" x 4 1/2" ALUMINUM STOREFRONT SYSTEM w/ INSULATED GLAZING - ANODIZED FINISH

INTERIOR WINDOW SCHEDULE



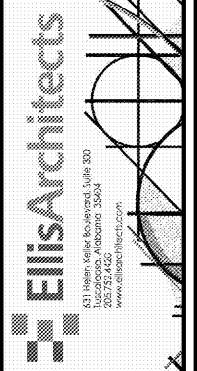
INTERIOR WINDOW SCHEDULE
 1: NOT IN USE
 2: HM FRAME W/ GLAZING AS SPECIFIED; SEE SPECS - PAINTED
 3: 2" HM FRAME W/ GLAZING AS SPECIFIED; SEE SPECS - PAINTED (PROVIDE W/ REMOVABLE STOP ON INTERIOR SIDE)
 4: 1 1/8" x 1 1/2" PREFINISHED ALUMINUM GLAZING TRACK CHANNEL (TOP) - 1 1/8" x 1 1/2" PREFINISHED ALUMINUM GLAZING TRACK CHANNEL (BOTTOM) w/ 3/8" LAMINATED SAFETY GLAZING (SEE BELOW FOR PRODUCT INFO) AS SPECIFIED - ANODIZED FINISH



WINDOW TRACK DETAILS
 5: 1 1/8" x 1 1/2" PREFINISHED ALUMINUM GLAZING TRACK CHANNEL (TOP) - 1 1/8" x 1 1/2" PREFINISHED ALUMINUM GLAZING TRACK CHANNEL (BOTTOM) w/ 3/8" LAMINATED SAFETY GLAZING "WET GLAZING SYSTEM" I.Q. TO WUISACL TRACK FOR LIFT & DROP APPLICATIONS. FIELD VERIFY DIMENSIONS.
 6: 1 1/8" x 1 1/2" PREFINISHED ALUMINUM GLAZING TRACK CHANNEL (TOP) - 1 1/8" x 1 1/2" PREFINISHED ALUMINUM GLAZING TRACK CHANNEL (BOTTOM) w/ 3/8" LAMINATED SAFETY GLAZING "WET GLAZING SYSTEM" I.Q. TO WUISACL TRACK FOR LIFT & DROP APPLICATIONS. FIELD VERIFY DIMENSIONS.

CRJ-C.R. LAWRENCE, INC.
 clawrence.com
 PH: 800-421-6144

Order Plans @ WWW.LDLINE.COM



New Construction for:
BIBB COUNTY COURTHOUSE ANNEX
 8 Court Square West
 Centreville, Alabama



Copyright © 2019
 Elis Architects, Inc.
 Elis Architects, Inc. maintains all intellectual rights and ownership of all information contained on these documents. Elis Architects, Inc. and its consultants shall be deemed the authors and owners of their respective instruments of service and shall retain all common law, statutory and other reserved rights, including copyrights. This document shall not be reproduced without the written authorization of Elis Architects.
 Do Not Scale From Drawings.
 Contractor must verify all dimensions prior to construction.

JOB No.	18004
DOCUMENT	DATE
DESIGN DEV.	09/06/2019
DRAWN BY: CJH	
DOOR/WINDOW SCHEDULE	
A5.1	