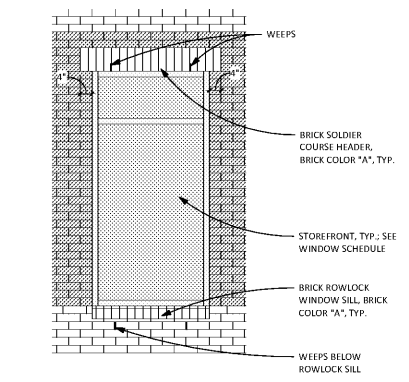
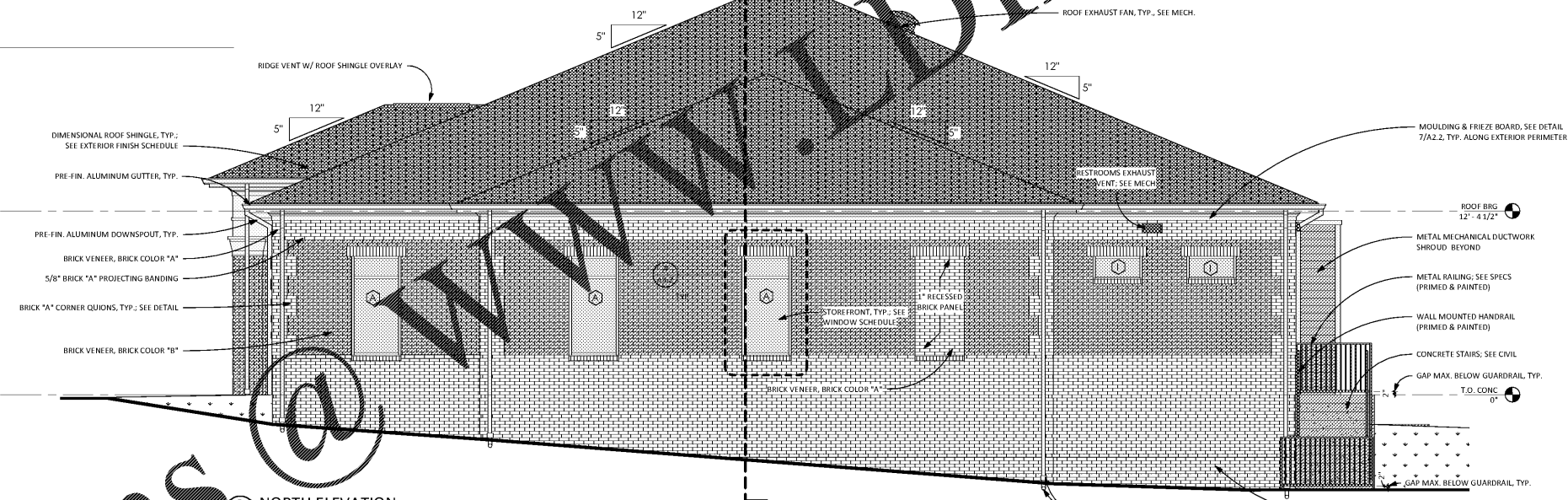


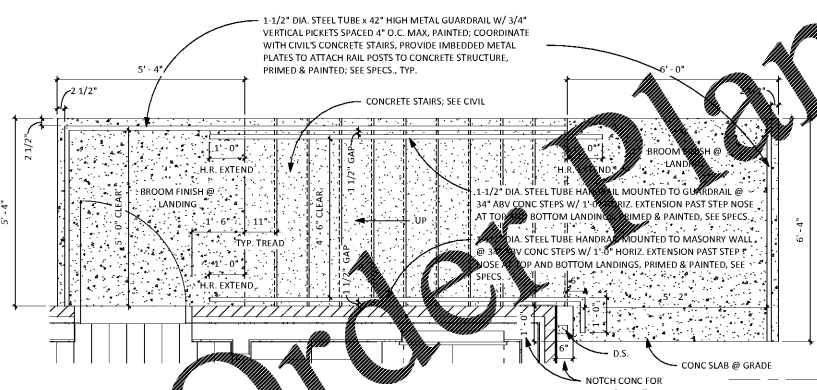
1 WEST ELEVATION
 1/4" = 1'-0"



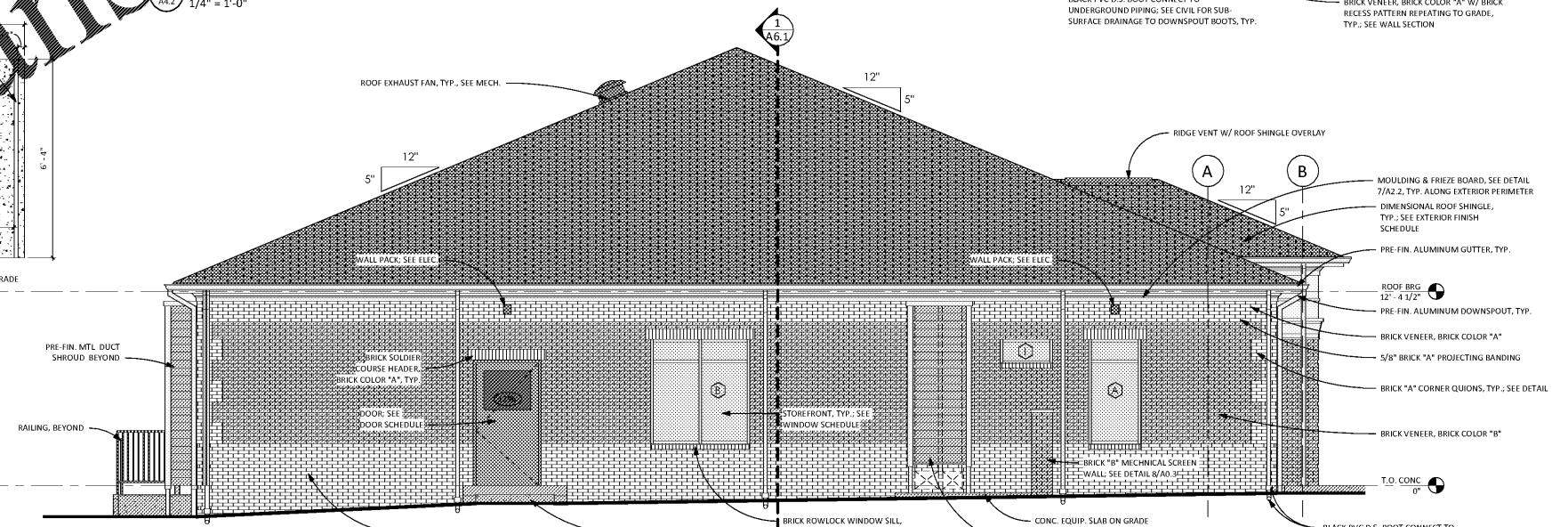
4 TYPICAL WINDOW ELEVATION
 1/2" = 1'-0"



2 NORTH ELEVATION
 1/4" = 1'-0"



5 ENLARGED PLAN - STAIRS
 1/2" = 1'-0"



3 SOUTH ELEVATION
 1/4" = 1'-0"