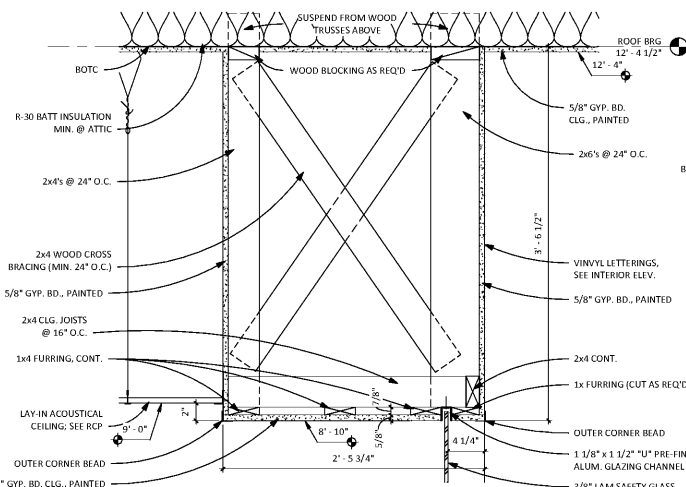
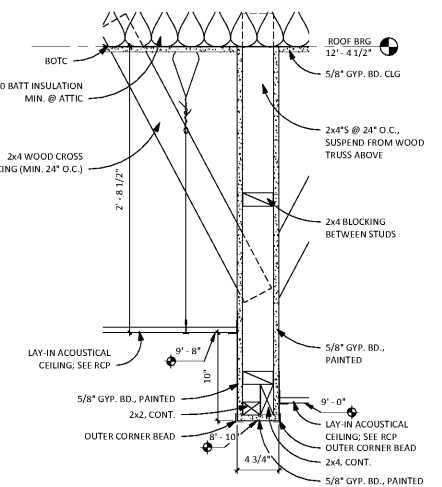


2 RCP DETAIL - BULKHEAD @ LOBBY
A2.1 1 1/2" = 1'-0"



3 RCP DETAIL - BULKHEAD ABV TELLER WINDOW
A2.1 1 1/2" = 1'-0"



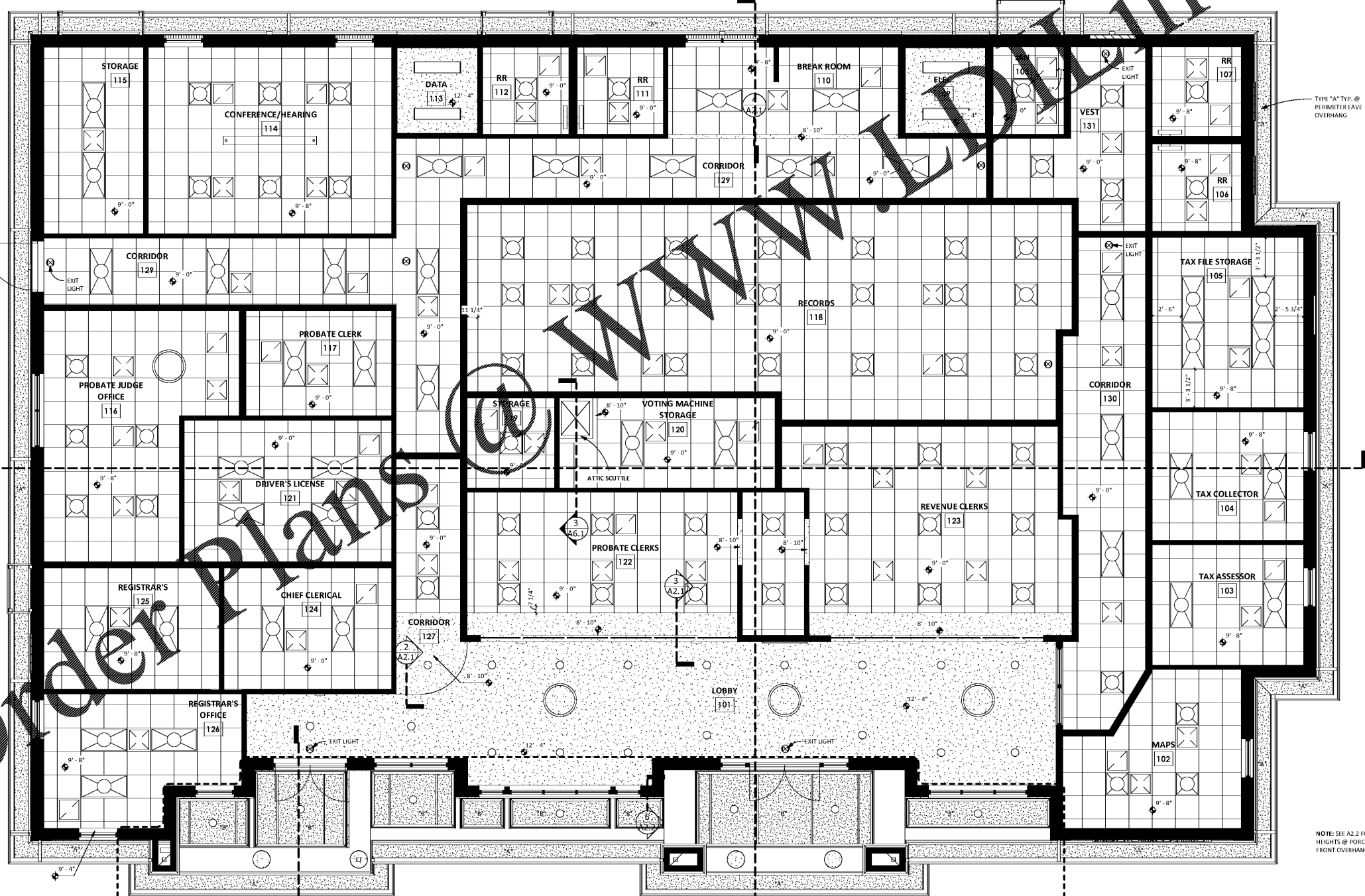
4 RCP DETAIL - FURR DOWN @ BREAK ROOM
A2.1 1 1/2" = 1'-0"

NOTES

- COORDINATE ALL LIGHT FIXTURE PLACEMENT WITH PLUMBING, MECHANICAL, AND ELECTRICAL DRAWINGS.
- ALL WALL MOUNTED LIGHT FIXTURES SHALL BE CENTERED ABOVE LAVATORIES.
- BOTC = BOTTOM OF TRUSS CHORD

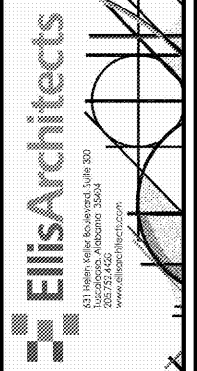
LEGEND

ARCHITECTURAL	ELECTRICAL	MECHANICAL
2" O.P. x 2-1/4" SUSPENDED ACOUSTICAL TILE CEILING IN PREFINISHED METAL GRID, SEE SPECIFICATIONS.	2'x2' LED LIGHT FIXTURE	HVAC SUPPLY DIFFUSER
GYP/SUM WALL BOARD, PAINT	2'x4' LED LIGHT FIXTURE	HVAC RETURN DIFFUSER
CEMENTITIOUS SOFFIT	SURFACE MOUNTED CEILING LIGHT FIXTURE	ATTIC SCUTTLE
TYPE "A" - VENTED SOFFIT AT ROOF EAVES	WALL LIGHT FIXTURE	
TYPE "B" - NON-VENTED SOFFIT AT EXTERIOR CEILINGS	RECESSED LIGHT FIXTURE	
	PLF, INTERIOR PENDANT LIGHT FIXTURE	
	EXIT LIGHT	
9'-4" TYPICAL CEILING HEIGHT DESIGNATOR		



1 REFLECTED CEILING PLAN
A2.1 1/4" = 1'-0"

NOTE: SEE A2.2 FOR CLG HEIGHTS @ PORCHES & FRONT OVERHANGS



New Construction for:
BIBB COUNTY COURTHOUSE ANNEX
8 Court Square West
Centreville, Alabama



Copyright © 2019
Elis Architects, Inc.
Elis Architects, Inc. maintains all intellectual rights and ownership of all information contained on these documents. Elis Architects, Inc. and its consultants shall be deemed the authors and owners of their respective instruments of service and shall retain all common law, statutory and other reserved rights, including copyrights. This document shall not be reproduced without the written authorization of Elis Architects.
Do Not Scale From Drawings.
Contractor must verify all dimensions prior to construction.

JOB No.	18004
DOCUMENT	DATE
DESIGN DEV.	09/06/2019

DRAWN BY: Author
REFLECTED CEILING PLAN
A2.1