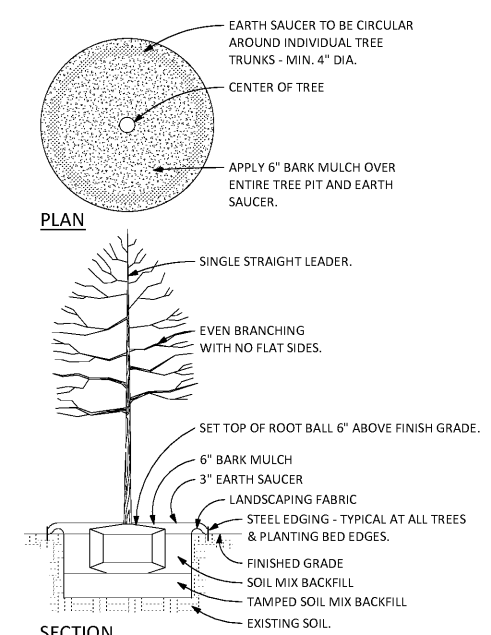


PLANT SCHEDULE						
SYMBOL	COMMON NAME	MARK	BOTANICAL NAME	VARIETY	SIZE	SPACING
	Willow Oak	OAK	Quercus Phellos	Cathedral Live Oak	12'-14" Tall	As Shown
	October Glory Maple	OG	Acer Rubrum	October Glory	8'-10" Tall	As Shown
	White Crape Myrtle	CM	Lagerstroemia Indica - Alba	Natchez	8'-10" Tall	As Shown
	Wax Leaf Ligustrum	WL	Ligustrum Japonicum	Northern Bayberry	5'-6" (3 gal)	As Shown
	White Azalea	WA	Azalea Hybrida	Satsuki Hybrid Azalea	24" Spread	As Shown
	Indian Hawthorn	IA	Raphiolepis Indica		24" Spread	As Shown
	Emerald Green Arborvitae	EA	Thuja Occidentalis		12'-15" (4' Spread)	As Shown
	Dwarf Mondo Grass	DM	Ophiopogon Japonicum 'Nana'		4" Pots	6" Spacing
	Zoysia Sod	SOD	Eremochloa Buse		Sod	

GENERAL NOTE:
 1. COORDINATE WITH CIVIL, MEP&E DRAWINGS FOR FULL SCOPE OF SITE DEMOLITION AND NEW SITE CONSTRUCTION ITEMS.

LANDSCAPING NOTES:
 1. LANDSCAPE CONTRACTOR SHALL REVIEW LANDSCAPING PLAN WITH OWNER BEFORE PURCHASING AND INSTALLING ANY LANDSCAPING MATERIALS.
 2. PROVIDE 4" OF TOPSOIL MATERIAL AT ALL LANDSCAPED AREAS INCLUDING ALL GRASS SOD AND PLANTING BED AREAS.
 3. INSTALL WEED FABRIC AT ALL MULCHED AREAS.
 4. COORDINATE THE LANDSCAPING DESIGN AND INSTALLATION WITH ALL UNDERGROUND AND OVERHEAD SITE UTILITIES.
 5. ALL MULCH BEDS SHALL BE PROVIDED WITH MINIMUM 2" DEPTH OF MULCH - SEE SPECS FOR MULCHING REQUIREMENTS.
 6. ALL CANOPY TREES TO HAVE A 2" CALIPER SIZE.
 7. PROVIDE PRE-FIN METAL EDGING AT ALL SOD TO MULCH TRANSITIONS.

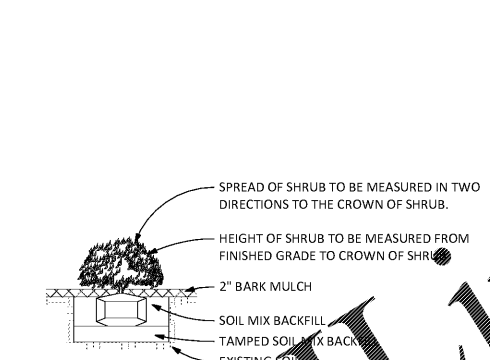
SIDEWALK NOTES:
 1. ALL SIDEWALKS SHALL BE MINIMUM 4" THICK CONCRETE.
 2. ALL SIDEWALKS SHALL HAVE CONTROL JOINTS, MINIMUM EVERY 5'-0".
 3. ALL SIDEWALKS SHALL HAVE EXPANDING JOINTS EVERY 20'-0", AT EVERY CHANGE IN DIRECTION, AND AS SPECIFICALLY NOTED ON THE PLAN.
 4. COORDINATE LOCATION OF ALL NEW WALKS WITH CIVIL DRAWINGS.



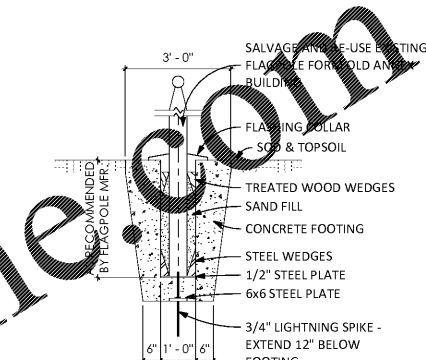
2 TYPICAL TREE DETAIL
 1" = 10'-0"

PARKING LEGEND		
PARKING	REQUIRED	PROVIDED
TOTAL SPACES (1 per 500 SF Gross)	14	38
ACCESSIBLE * VAN	1	1

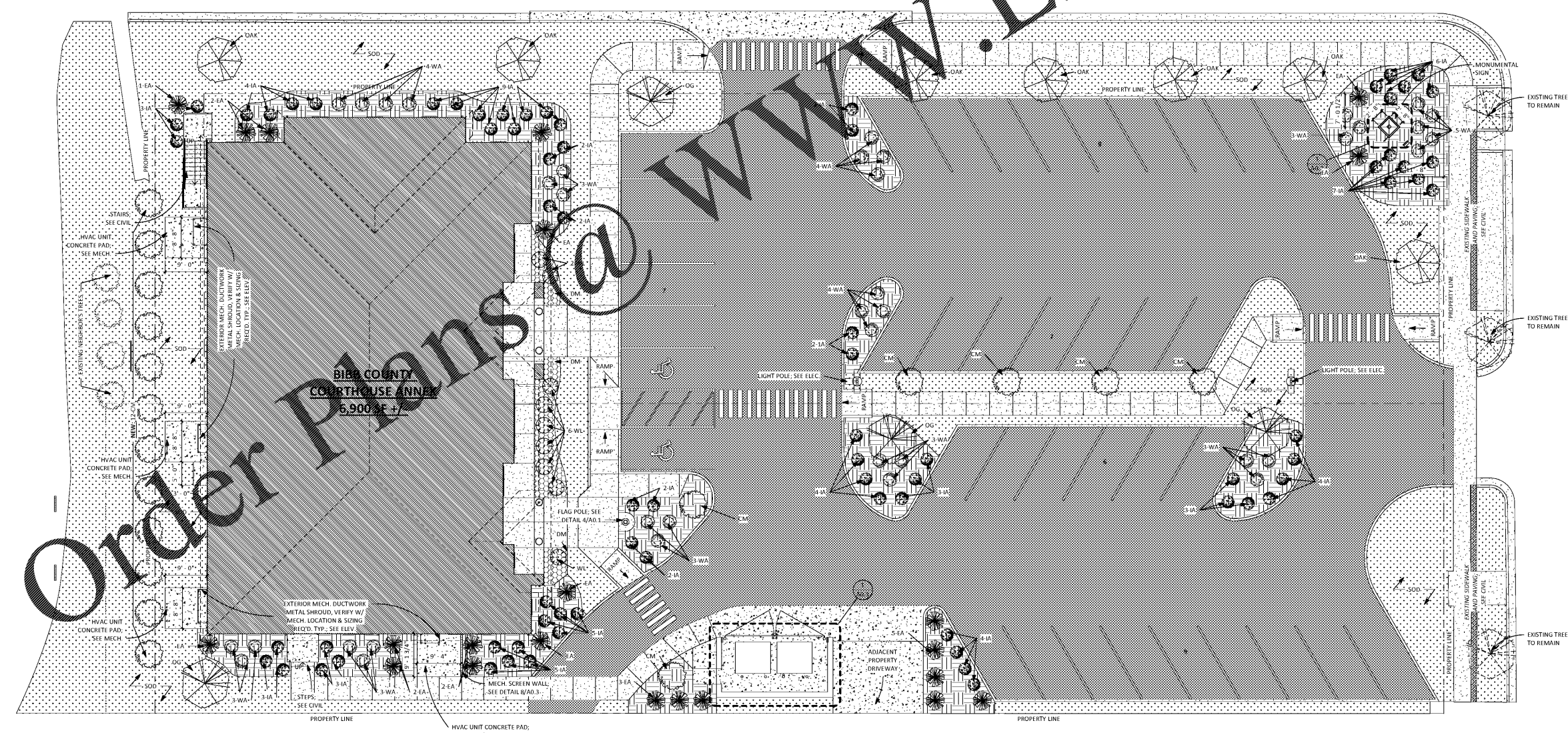
SITE MATERIAL LEGEND	
	REINFORCED CONCRETE SIDEWALK
	REINFORCED ASPHALT PAVING
	MULCH
	SOD



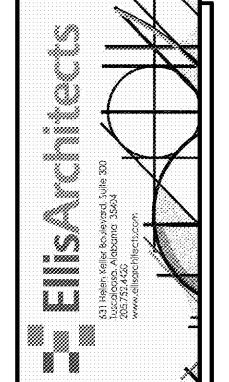
3 TYPICAL SHRUB DETAIL
 1" = 10'-0"



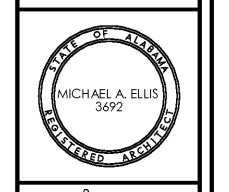
4 TYPICAL FLAGPOLE DETAIL
 1/2" = 1'-0"



1 ARCHITECTURAL SITE PLAN
 1" = 10'-0"



New Construction for:
BIBB COUNTY COURTHOUSE ANNEX
 8 Court Square West
 Centreville, Alabama



Copyright © 2019
 Ellis Architects, Inc.
 Ellis Architects, Inc. maintains all intellectual rights and ownership of all information contained on these documents. Ellis Architects, Inc. and its consultants shall be deemed the authors and owners of their respective instruments of service and shall retain all common law, statutory and other reserved rights, including copyrights. This document shall not be reproduced without the written authorization of Ellis Architects.
 Do Not Scale From Drawings.
 Contractor must verify all dimensions prior to construction.

JOB No.	18004
DOCUMENT	DATE
DESIGN DEV.	09/06/2019
DRAWN BY: ---	
ARCHITECTURAL SITE PLAN	
A0.1	