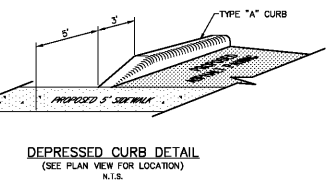
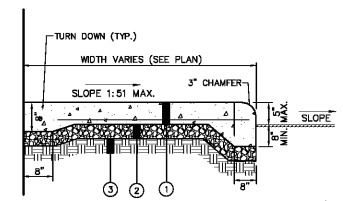
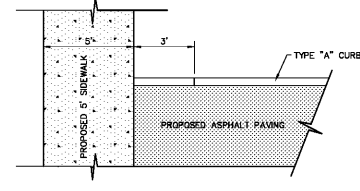
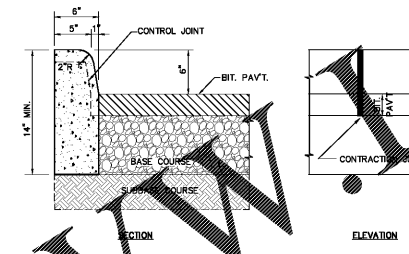
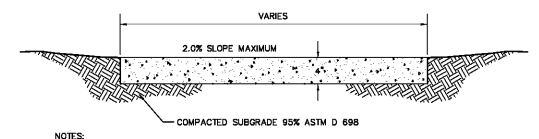
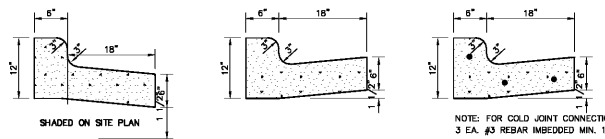
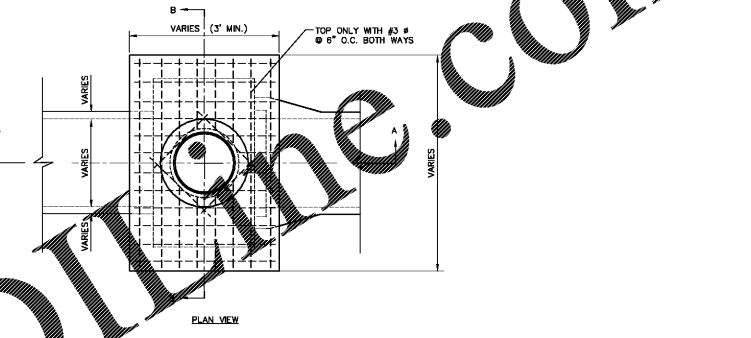
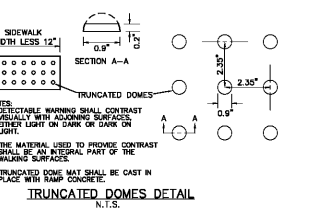
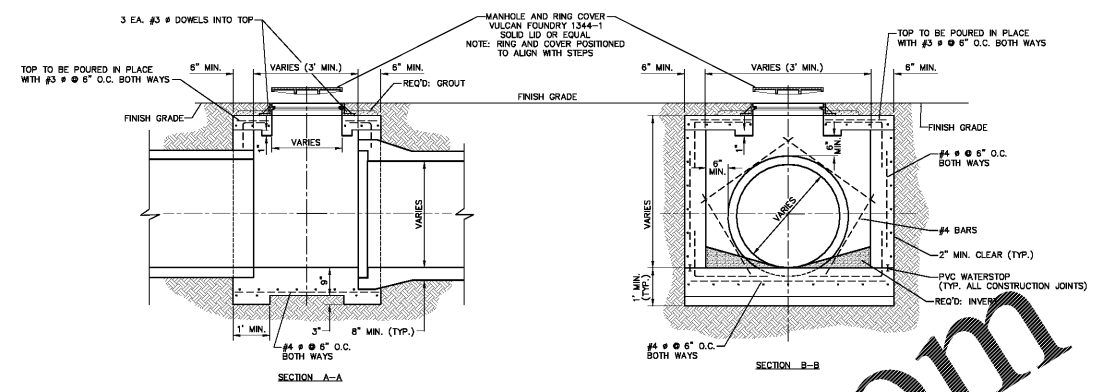
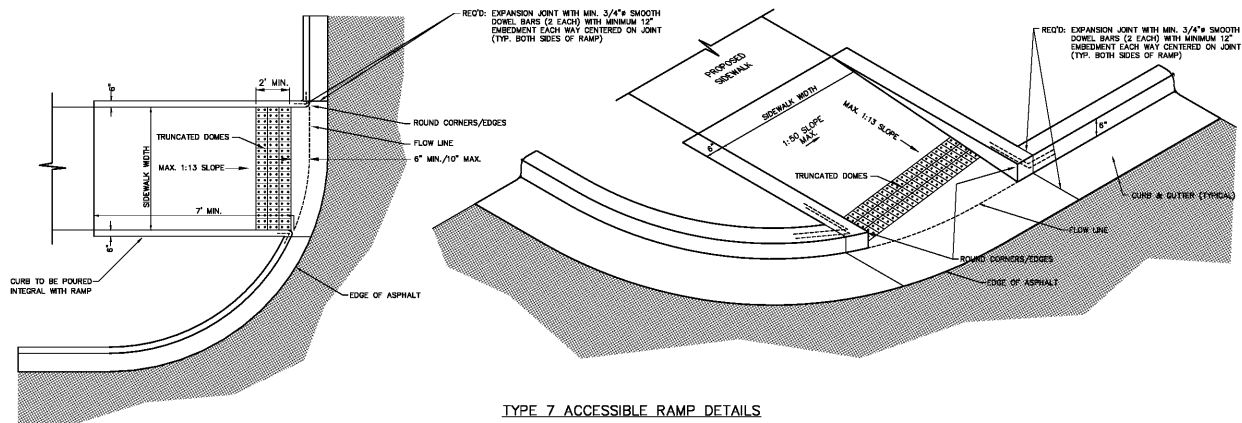
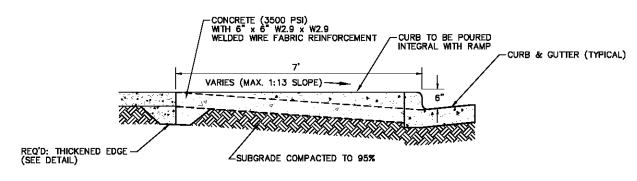
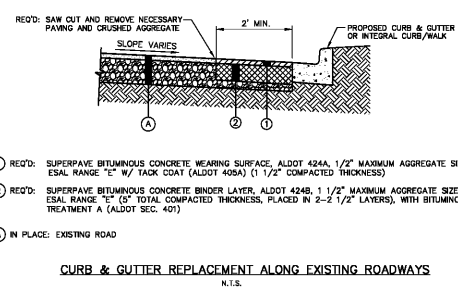
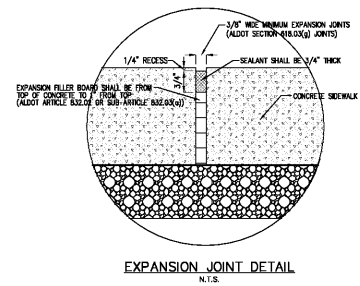
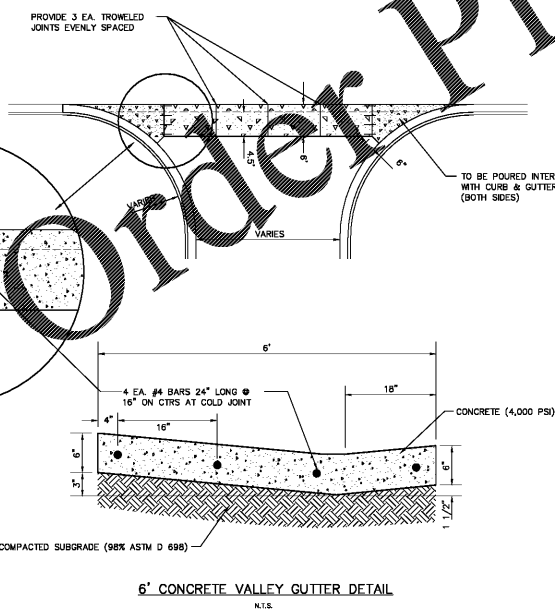
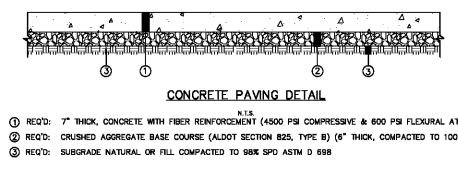
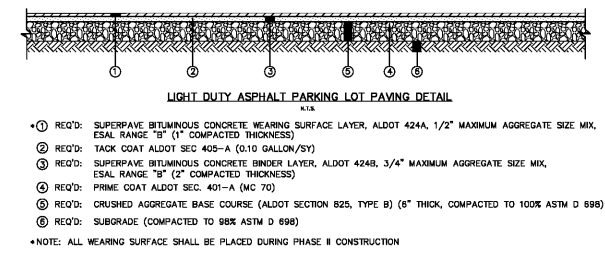
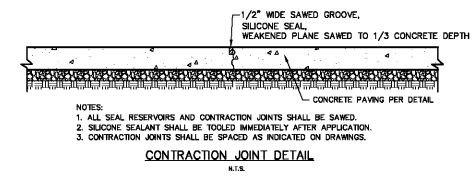
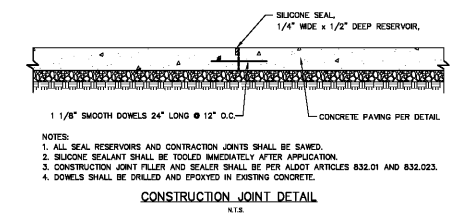
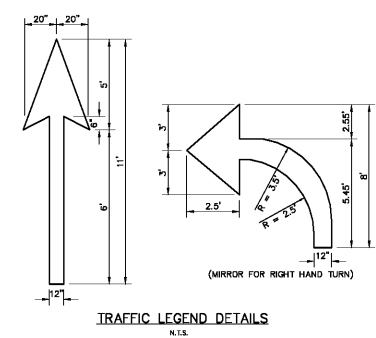
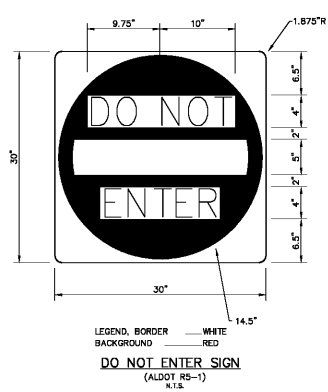


**PEDESTRIAN FACILITIES GENERAL NOTES:**

1. LANDINGS SHALL BE THE WIDTH OF THE SIDEWALK AND HAVE A DEPTH OF 5' MINIMUM WIDTH. A MAXIMUM 2% SLOPE IN ANY DIRECTION. A DESIGN MAX SLOPE OF 1.5% IS ENCOURAGED.
2. MANEUVERING SPACE AT THE BOTTOM OF CURB RAMPS SHALL BE A MINIMUM OF 4' X 4' WHOLLY CONTAINED WITHIN THE CROSSWALK AND WHOLLY OUTSIDE THE PARALLEL VEHICULAR TRAVEL PATH.
3. PROVIDE SMOOTH TRANSITIONS WHERE CURB RAMPS CONNECT TO THE STREET.
4. CROSS SLOPE NOT TO EXCEED 2% ON ANY PORTION OF RAMP OR TRANSITION TO STREET.
5. CURB RAMPS MUST CONTAIN A DETECTABLE WARNING SURFACE THAT CONSISTS OF RAISING TRUNCATED DOMES COMPLYING WITH ALDOT SPECIAL DRAWING NO. SW-518. THE SURFACE MUST CONTRAST VISUALLY WITH ADJOINING SURFACES, INCLUDING SIDE FLARES, FINISH DARK BROWN OR DARK RED DETECTABLE WARNING SURFACE ADJACENT TO UNCOLORED CONCRETE, UNLESS SPECIFIED ELSEWHERE IN THE PLANS.
6. DETECTABLE WARNING SURFACES MUST BE SLIP RESISTANT AND NOT ALLOW WATER TO ACCUMULATE.
7. ALIGN TRUNCATED DOMES IN THE DIRECTION OF PEDESTRIAN TRAVEL WHEN ENTERING THE STREET.
8. DETECTABLE WARNING SURFACES SHALL HAVE A MINIMUM DEPTH OF 2 1/4" IN THE DIRECTION OF PEDESTRIAN TRAVEL AND EXTEND THE FULL WIDTH OF THE CURB RAMP OR LANDING WHERE THE PEDESTRIAN ACCESS ROUTE ENTERS THE STREET.
9. DETECTABLE WARNING SURFACES SHALL BE LOCATED SO THAT THE EDGE NEAREST THE CURB IS A MINIMUM OF 6" AND A MAXIMUM OF 10" FROM THE EXTENSION OF THE FACE OF CURB.



1. REQ'D: SIDEWALK, 6" THICK, 4000 PSI CONCRETE WITH W2.9 X W2.9 WELDED WIRE FABRIC
2. REQ'D: CRUSHED AGGREGATE BASE COURSE ALDOT SECTION 825 TYPE "B", 4" COMPACTED THICKNESS COMPACTED TO 98% SPD ASTM D 698
3. REQ'D: SUBGRADE NATURAL OR FILL COMPACTED TO 98% SPD ASTM D 698



**McGiffert and Associates, LLC** DWG No. 262-19  
 CIVIL ENGINEERS  
 FILENAME: Bibb-Courthouse-Annex-DETAILS  
 DRAWN BY: D. W. H.  
 CHECKED BY: J. L. D.  
 COPYRIGHT © 2019 MCGIFFERT AND ASSOCIATES, LLC JOB No. 18-2083

Order Plans @