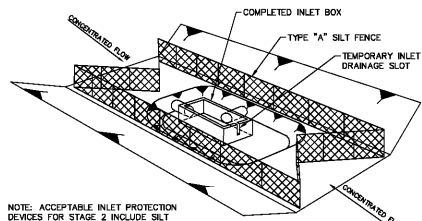


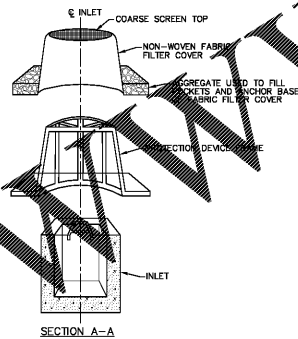
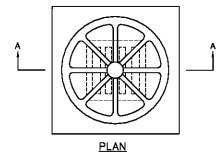
INLET PROTECTION CONSTRUCTION STAGES NOTES:

- INLET PROTECTION SHALL BE INSTALLED AT LOCATIONS AND IN ACCORDANCE WITH REQUIREMENTS SHOWN ON THE PLANS FOR THE APPROPRIATE STAGES OF CONSTRUCTION OR AS DIRECTED BY THE OWNER'S REPRESENTATIVE. APPROVED MANUFACTURED PRODUCTS SHALL BE INSTALLED AS PER MANUFACTURER'S RECOMMENDATIONS. SITE CONSTRUCTED PROTECTION SHALL BE IMPLEMENTED IN ACCORDANCE WITH THE APPROPRIATE STAGE OF CONSTRUCTION OR AS DIRECTED BY THE OWNER'S REPRESENTATIVE.
 - STAGE 1 INLET PROTECTION SHALL BE INSTALLED AFTER THE OUTFLOW DRAINAGE HAS BEEN INSTALLED AND PRIOR TO THE CONSTRUCTION OF THE INLET.
 - STAGE 2 INLET PROTECTION SHALL BE INSTALLED AFTER THE INLET IS CONSTRUCTED AND PRIOR TO BACKFILLING.
 - STAGE 3 INLET PROTECTION SHALL BE INSTALLED AFTER THE BACKFILLING IS COMPLETED AROUND THE INLET STRUCTURE.
 - STAGE 4 PROTECTION IS REQUIRED AFTER INLETS ARE COMPLETE BUT PRIOR TO FINAL STABILIZATION OF THE AREA SURROUNDING THE INLET. STAGE 4 INLET PROTECTION FOR DROP INLETS SHALL BE IN ACCORDANCE WITH REQUIREMENTS AND DETAILS SHOWN ON THE PLANS. ACCEPTABLE PROTECTION MAY BE CONSTRUCTED WITH MANUFACTURED INLET DEVICES, OR WATTLES.
- ALL INLET PROTECTION INSTALLATIONS SHALL BE CONSTRUCTED TO ENSURE THAT RUNOFF DOES NOT BYPASS THE INLET.
- INLET CONSTRUCTION SHOULD COMMENCE AS SOON AS POSSIBLE AND BE CONTINUOUS THROUGH COMPLETION OF THE PROJECT.
- CONFIGURATIONS MAY BE ADJUSTED BECAUSE OF WATER FLOW, SOIL, OR INSTALLATION CHALLENGES, WITH APPROVAL OF THE OWNER'S REPRESENTATIVE.
- DURING STAGE 1 AND STAGE 2, SILT FENCE MAY BE REQUIRED UP-SLOPE OF THE INLET EXCAVATION AS DIRECTED BY THE OWNER'S REPRESENTATIVE.
- IF SILT FENCING IS INSTALLED AROUND THE INLET EXCAVATION, IT SHOULD BE PLACED IN A CONFIGURATION THAT WILL ALLOW INLET CONSTRUCTION.
- PAYMENT FOR ITEMS USED TO CONSTRUCT STAGE 1, STAGE 2, STAGE 3, AND STAGE 4 INLET PROTECTIONS WILL BE MEASURED FOR PAYMENT APPROPRIATELY AS PER UNIT PRICE BID SCHEDULE, I.E., SILT FENCE, WATTLES, ETC. PAYMENT SHALL INCLUDE ALL MAINTENANCE, REPLACEMENT, REPAIR, ETC.



NOTE: ACCEPTABLE INLET PROTECTION DEVICES FOR STAGE 2 INCLUDE SILT FENCE, HAY BALE PROTECTION NOT ACCEPTABLE THIS STAGE.

INLET BOX CONSTRUCTED BUT NOT BACKFILLED
N.I.S.



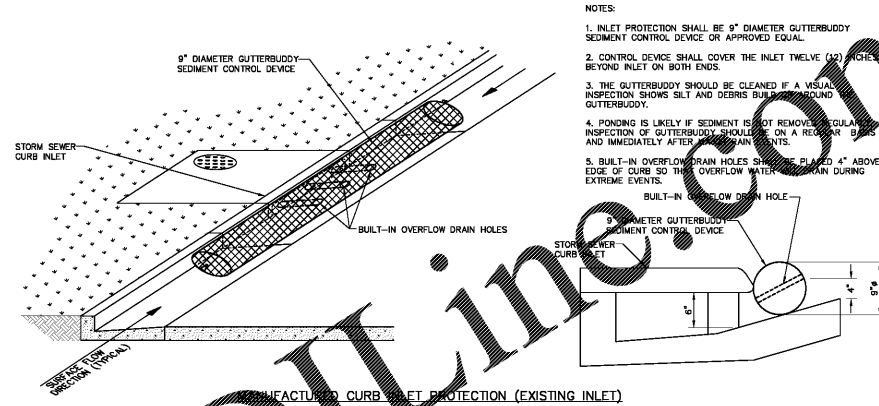
MANUFACTURED DEVICE INLET PROTECTION DETAILS
N.I.S.

STAGE 3 NOTES:

- FRAMES WITH EITHER SQUARE OR CIRCULAR BASES MAY BE USED. SELECTED FRAME BASE SHOULD PROVIDE BEST SEAL AROUND INLET AS DIRECTED BY OWNER'S REPRESENTATIVE.
- FILL POCKETS AROUND BASE OF FILTER COVER WITH ALDOT #57 STONE OR SOIL. STONE IS REQUIRED WHEN ANCHORING THE MANUFACTURED INLET PROTECTION DEVICE OVER PAVED DITCH OR FLUME.
- USE ONLY DURING STAGE 3 AND 4 INLET CONSTRUCTION.
- REMOVE SEDIMENT FROM AROUND THE MANUFACTURED INLET PROTECTION DEVICE WHEN SEDIMENT HAS REACHED 1/2 THE FABRIC HEIGHT TAKING CARE NOT TO DAMAGE THE FABRIC DURING SEDIMENT REMOVAL.
- REPLACE FABRIC WHEN DAMAGED OR BECOMES CLOGGED WITH SEDIMENT AND DOES NOT DRAIN PROPERLY.

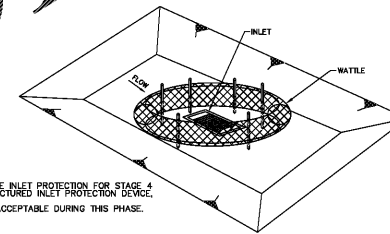
STAGE 3

INLET PROTECTION



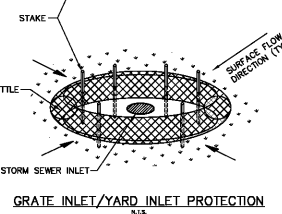
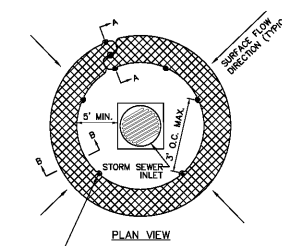
NOTES:

- INLET PROTECTION SHALL BE 9" DIAMETER GUTTERBUDDY SEDIMENT CONTROL DEVICE OR APPROVED EQUAL.
- CONTROL DEVICE SHALL COVER THE INLET TWELVE (12) INCHES BEYOND INLET ON BOTH ENDS.
- THE GUTTERBUDDY SHOULD BE CLEANED IF A VISUAL INSPECTION SHOWS SILT AND DEBRIS BUILD UP AROUND GUTTERBUDDY.
- PONDING IS LIKELY IF SEDIMENT IS NOT REMOVED. REGULAR INSPECTION OF GUTTERBUDDY SHOULD BE ON A REGULAR BASIS AND IMMEDIATELY AFTER RAIN EVENTS.
- BUILT-IN OVERFLOW DRAIN HOLES SHALL BE PLACED 4" ABOVE EDGE OF CURB SO THAT OVERFLOW WATER CAN DRAIN DURING EXTREME EVENTS.

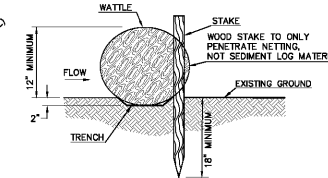


NOTE: ACCEPTABLE INLET PROTECTION FOR STAGE 4 INCLUDES MANUFACTURED INLET PROTECTION DEVICE, OR WATTLES. HAY BALES NOT ACCEPTABLE DURING THIS PHASE.

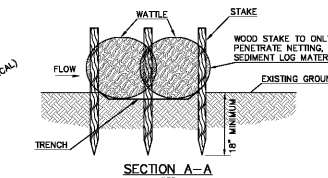
INLET CONSTRUCTED & BACKFILLED WITH FINAL GRADING OPERATIONS COMPLETED OR IN PROGRESS
N.I.S.



GRATE INLET/YARD INLET PROTECTION
N.I.S.



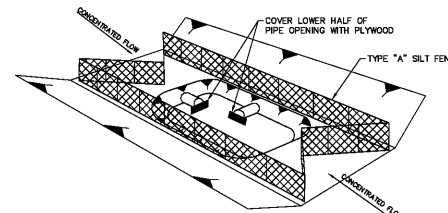
WATTLE INSTALLATION DETAIL (SECTION B-B)
N.I.S.



STAGE 4 NOTES:

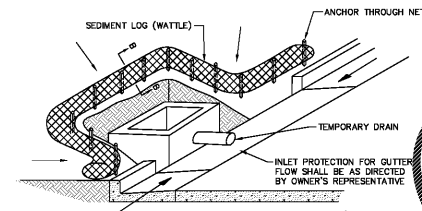
- ANCHORING STAKES SHALL BE SIZED, SPACED, AND BE A MATERIAL THAT EFFECTIVELY SECURES THE WATTLE. STAKE SPACING SHALL BE A MAXIMUM OF THREE FEET.
- OVERLAP ENDS OF WATTLES PER MANUFACTURER'S RECOMMENDATIONS (1" MIN., 3" MAX.).
- TRENCHING OF WATTLES SHALL BE REQUIRED TO CREATE A KEYWAY AND AVOID UNDERMINING.
- SEDIMENT DEPOSITS MUST BE REMOVED AND STABILIZED WHEN THEY REACH A DEPTH OF 1/2 THE HEIGHT OF THE WATTLE TO PROVIDE ADEQUATE STORAGE VOLUME FOR THE NEXT RAIN EVENT.
- WORN, DAMAGED, OR ROTTEN WATTLES MUST BE REPLACED.

STAGE 4



INLET BOX LOCATION EXCAVATED
N.I.S.

STAGE 1



STAGE 2 NOTES:

- ACCEPTABLE INLET PROTECTION DEVICES FOR STAGE 2 INCLUDE SILT FENCE AND SEDIMENT LOGS. WATTLES/HAY BALE PROTECTION IS NOT ACCEPTABLE FOR THIS PHASE.
- REMOVE SEDIMENT DEPOSITS WHEN THEY REACH A DEPTH OF 15" OR 1/2 THE HEIGHT OF THE FENCE AS INSTALLED TO PROVIDE ADEQUATE STORAGE VOLUME FOR THE NEXT RAIN EVENT AND TO REDUCE PRESSURE ON THE FENCE.
- IF THE SILT FENCE BECOMES DAMAGED OR OTHERWISE INEFFECTIVE WHILE THE INLET PROTECTION IS STILL NECESSARY, IT SHALL BE REPAIRED PROMPTLY WITH A NEW SECTION OF FILTER OVERLAPPING A MINIMUM OF 12 INCHES ON EACH SIDE OF A BREAK.
- INSTALLATION OF WATTLE CURB INLET PROTECTION SHALL BE REQUIRED AS SHOWN IN THE STAGE 4 WATTLE INSTALLATION DETAIL (SECTION B-B).

STAGE 2

Order Plans @ WWW.LDILLINE.COM

JOB No.	18004
DOCUMENT	DATE
DRAWN BY:	D. HIGDON
STANDARD DETAILS	
C6.0	

