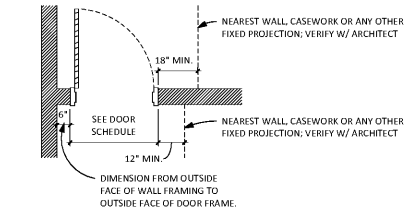


WWW.LDILine.com



2 TYPICAL INTERIOR DOOR CLEARANCES
 60.1 3/8" = 1'-0"

STANDARD INSTALLATION GUIDELINE DETAILS

FRONT APPROACH MANEUVERING CLEARANCES AT DOORS

2010 ADA STANDARDS FOR ACCESSIBLE DESIGN: CLEAR FLOOR SPACE AT WATER CLOSETS

2010 ADA STANDARDS FOR ACCESSIBLE DESIGN: SIZE OF WHEELCHAIR ACCESSIBLE TOILET COMPARTMENT

ADAAG FIG. 30E: SIZE AND SPACING OF GRAB BARS

ACCESSIBLE ACCESSORY HEIGHTS

ADAAG FIG. 29: GRAB BARS AT WATER CLOSETS

ADAAG FIG. 31: LAVATORY CLEARANCES

TACTILE SIGNS **DIRECTORIES & DIRECTIONAL SIGNS**

INTERIOR SIGNAGE
 SIGN INSTALLATION MUST COMPLY WITH 2010 ADA STANDARDS, 703 SIGNS

MOUNTING HEIGHT: AT ACCESSIBLE FOUNTAIN, THE SPOUT OUTLET BE NO MORE THAN 36\"/>

DIMENSION IS SHOWN TO THE CARRYING HANDLE OR THE CENTERLINE OF THE CABINET HANDLE. FOR SEMI-RECESSED CABINET LOCATIONS, INSTALL SUCH THAT THE BOTTOM OF THE RECESSED PORTION OF THE CABINET IS 28\"/>

FIRE EXTINGUISHER MOUNTING HEIGHT
 SEE OSHA INSTALLATION GUIDELINES AT WWW.OSHA.GOV FOR PROPER PLACEMENT AND SPACING.

PROTRUDING DISPENSER BELOW GRAB BAR

PROTRUDING DISPENSER ABOVE GRAB BAR

RECESSED DISPENSER

LATCH SIDE APPROACH MANEUVERING CLEARANCES AT DOORS

HINGE SIDE APPROACH MANEUVERING CLEARANCES AT DOORS

Order Plans @