

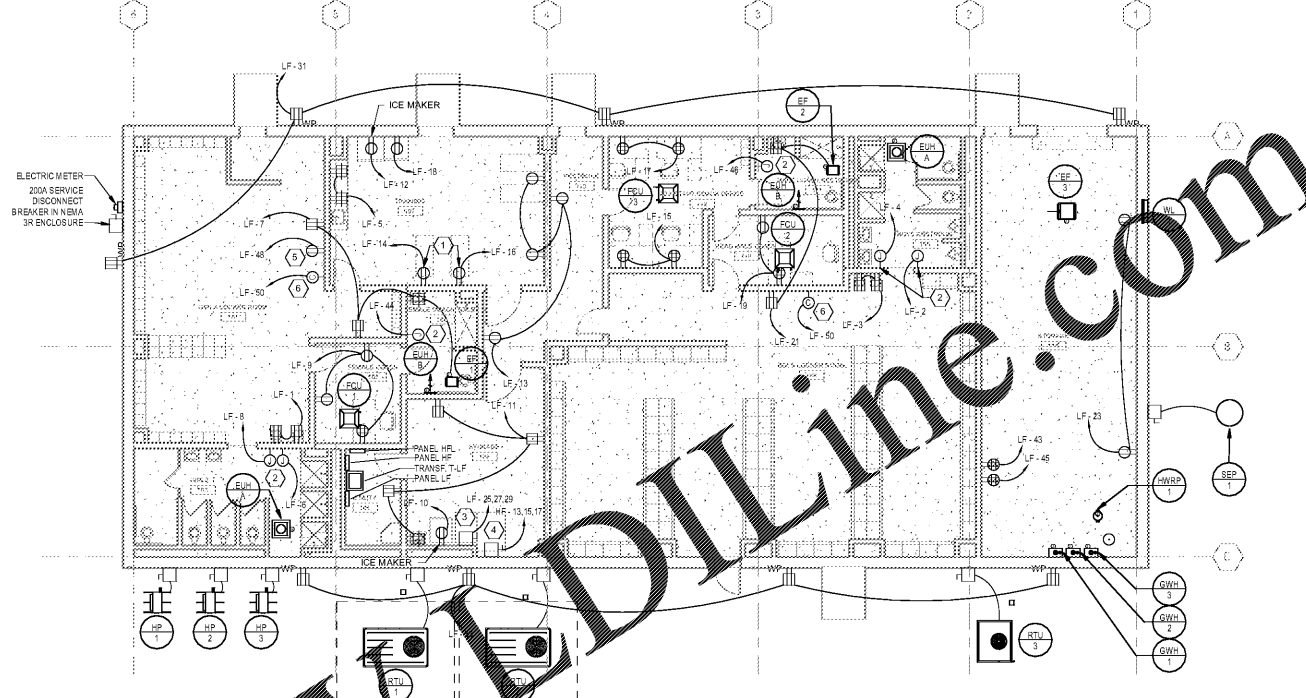


ISSUANCES		
No.	Drawing Issue Description	Date
1	ISSUED FOR R/D	11/04/19

GENERAL NOTES (ELECTRICAL):

- COORDINATE EXACT LOCATION AND INSTALLATION REQUIREMENTS OF ALL MECHANICAL EQUIPMENTS WITH MECHANICAL CONTRACTOR BEFORE ROUGH-IN. SEE MECHANICAL EQUIPMENT CONNECTION SCHEDULE ON SHEET EF02.
- COORDINATE EXACT LOCATION AND INSTALLATION REQUIREMENTS OF ALL PUMPS & WATER HEATER WITH PLUMBING CONTRACTOR BEFORE ROUGH-IN.
- ALL GROUND FAULT PROTECTION IS PROVIDED VIA GFCI BREAKER.
- ALL WEATHER-PROOF RECEPTACLE TO HAVE SELF-CLOSING WATERPROOF COVER.
- ALL GENERAL RECEPTACLE TO BE MOUNTED VERTICALLY, GROUND HOLE DOWN, BOTTOMS OF OUTLET BOXES AT 16" AFF ON TOP OF SECOND CMU COURSE. ALL ADJACENT ITEMS ALIGNED.
- ALL RECEPTACLE ABOVE COUNTERTOPS TO BE MOUNTED HORIZONTALLY; LOCATE BOTTOM OF BOX AT FIRST CMU COURSE LINE ABOVE TOP OF SPLASH. ALL ADJACENT ITEMS ALIGNED.

KEYNOTE	DESCRIPTION
1	HOSPITAL GRADE RECEPTACLES FOR WHIRLPOOL. PROVIDE 2#12, 2#12G-3/4" FOR EACH RECEPTACLE.
2	JUNCTION BOX TO PROVIDE POWER FOR ELECTRIC HAND DRYER.
3	100/3/1 DISCONNECT SWITCH FOR WASHING MACHINE. PROVIDE 3#4, 1#9G-1.25" C
4	60/3/1 DISCONNECT SWITCH FOR DRYER. PROVIDE 3#6, 1#10G-1" C
5	RECEPTACLE FOR 70" INTERACTIVE FLAT PANEL SCREEN. FIELD COORDINATE EXACT LOCATION AND MOUNTING HEIGHT SO THAT THE RECEPTACLE WILL NOT BE VISIBLE.
6	POWERED CLOCK PER CCSD REQUIREMENTS. COORDINATE DEVICE MOUNTING HEIGHT WITH ARCHITECT BEFORE ROUGH-IN AS REQUIRED.



1 1st FLOOR PLAN - ELECTRICAL

Scale: 1/8" = 1'-0"

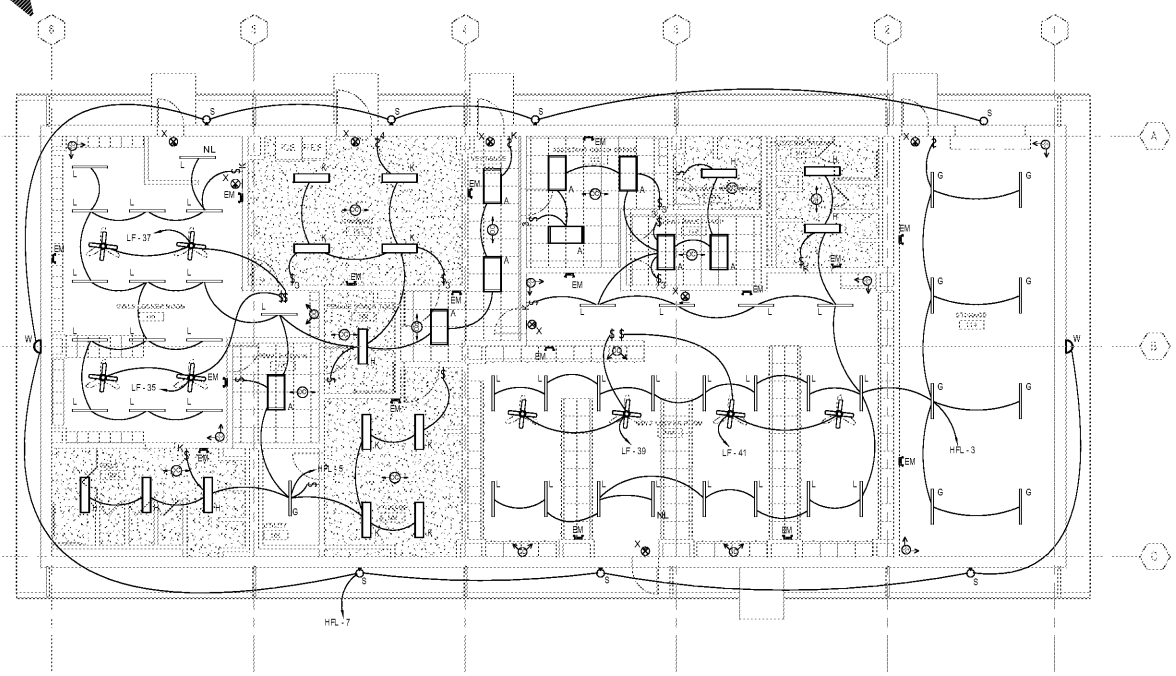
MECHANICAL EQUIPMENT CONNECTION SCHEDULE							
UNIT TAG	UNIT DESCRIPTION	LOAD	PANEL	CIRCUIT #	FEEDER SIZE	DISCONNECT	REMARK
EF-1	EXHAUST FAN	1.2KW	LF 7	LF 7	2#12, 1#12G-3/4"	MOTOR RATED SWITCH	SEE PLAN
EF-2	EXHAUST FAN	1.2KW	LF 21	LF 21	2#12, 1#12G-3/4"	MOTOR RATED SWITCH	SEE PLAN
EF-3	EXHAUST FAN	1/2HP	LF 26	LF 26	2#12, 1#12G-3/4"	MOTOR RATED SWITCH	SEE PLAN
EUHA	CEILING HEATER	1.9KW	HF 19	HF 19	2#12, 1#12G-3/4"	INTEGRAL DISCONNECT SWITCH	
EUHA	CEILING HEATER	1.9KW	HF 21	HF 21	2#12, 1#12G-3/4"	INTEGRAL DISCONNECT SWITCH	
EUHB	WALL HEATER	2KW	HF 23	HF 23	2#12, 1#12G-3/4"	INTEGRAL DISCONNECT SWITCH	
EUHB	WALL HEATER	2KW	HF 25	HF 25	2#12, 1#12G-3/4"	INTEGRAL DISCONNECT SWITCH	
FCU-1HP-1	DUCTLESS SPLIT SYSTEM	2.9KW	LF 28,30	LF 28,30	2#12, 1#12G-3/4"	DIVISION 23	
FCU-2HP-2	DUCTLESS SPLIT SYSTEM	2.9KW	LF 32,34	LF 32,34	2#12, 1#12G-3/4"	DIVISION 23	
FCU-3HP-3	DUCTLESS SPLIT SYSTEM	2.9KW	LF 36,38	LF 36,38	2#12, 1#12G-3/4"	DIVISION 23	
GW-1	GAS WATER HEATER	4A	LF 40	LF 40	2#12, 1#12G-3/4"	SWITCH	
GW-2	GAS WATER HEATER	4A	LF 40	LF 40	2#12, 1#12G-3/4"	SWITCH	
GW-3	GAS WATER HEATER	4A	LF 40	LF 40	2#12, 1#12G-3/4"	SWITCH	
HWRP-1	IN-LINE PUMP	1/8HP	LF 42	LF 42	2#12, 1#12G-3/4"	SWITCH	
RTU-1	AIR CONDITIONING	19KW	HF 27,29,31	HF 27,29,31	3#10, 1#10G-3/4"	DIVISION 23	
RTU-2	AIR CONDITIONING	19KW	HF 33,35,37	HF 33,35,37	3#10, 1#10G-3/4"	DIVISION 23	
RTU-3	AIR CONDITIONING	3.3KW	LF 22,24	LF 22,24	2#10, 1#10G-3/4"	DIVISION 23	
SEP-1	SUMP PUMP	3HP	HF 2,4,6	HF 2,4,6	3#12, 1#12G-3/4"	30/3/5R	

LIGHTING FIXTURE SCHEDULE				
TYPE	DESCRIPTION	MANUFACTURER CATALOG NO.	LAMPS	NOTES
A	RECESSED 2x4 LED	GREEN CREATIVE 307R0F2401W-8-40-277	LED	
EM	BUG-EYE EMERGENCY LIGHTING	DUAL LITE L22-50L SURE-LITE BL25E	LED	
G	LED STRIP LIGHT	LITHONIA BLW2 LED COLUMBIA LCS4-40ML METALUX WNL-LED-L1-49-LC-UNV-840-CD1	LED	
H	VAPOR TIGHT, VANDAL-PROOF, SURFACE MOUNTED LED AT RESTROOM	NBW STAR 51CB4-L2-1JN-UN-AL	LED	
K	SURFACE MOUNTED LED	COLUMBIA LW4 40LV METALUX WNL LED SERIES	LED	
L	VANDAL-PROOF PENDANT LED WRAPAROUND AT LOCKER ROOM	NBW STAR VIC49V-L2-40-1C-RW-UN-WH-PM	LED	
S	EXTERIOR WALL SCONCE, VANDAL-PROOF	HUBBELL TRP2-24-30-47-UNV	LED	
W	EXTERIOR LED WALLPACK, VANDAL-PROOF	HUBBELL TRP2-24-30-47-UNV MCGRAW HILL LED-LED-1-49-LC-UNV-840-CD1	LED	
X	EXIT SIGN, POLYCARBONATE HOUSING, RED LETTER	DUAL LITE L22-50L SURE-LITE BL25E	LED	

NOTE: CONTRACTOR SHALL PROVIDE "ATTIC STOCK" FOR ALL LIGHTING FIXTURES. SEE SPECIFICATIONS FOR DETAIL.

GENERAL NOTES (LIGHTING):

- EXIT SIGN AND BUG-EYES EMERGENCY LIGHTING TO BE CONNECTED TO CIRCUIT HFL-1 P
- NIGHT LIGHT FIXTURE 'NL' TO BE 24/7 FOR SECURITY.
- LIGHTING SYSTEM SHALL BE CAPABLE FOR TOTAL DARKNESS. ALL LIGHTING SHALL BE CONNECTED, INCLUDING EMERGENCY LIGHTS PROVIDE A PHASE MONITOR ON THE LINE SIDE OF LIGHTING CONTACTOR WITH DRY CONTACTS THAT WILL OPERATE EMERGENCY LIGHTING OR CONTROL IN THE EVENT OF POWER LOSS, LOW POWER OR LOSS OF PHASE IN LIGHTING PANEL.
- EXTERIOR LIGHTING TO BE CONTROLLED (VIA LIGHTING CONTACTOR) BY SPRING-WOUND TIMER, NO HOLD, SIX-HOUR MAXIMUM THAT IS LOCATED IN ASSISTANT COACH OFFICE. PROVIDE OVENRIDE SWITCH IN THE SAME LOCATION AS LIGHTING PANEL. INTERFACE WITH BUILDING AUTOMATION SYSTEM (BAS) AS REQUIRED.
- ELECTRICAL CONTRACTOR TO BE RESPONSIBLE FOR INSTALLING MOTION SENSORS AND RUNNING CABLEING FROM SENSORS TO BAS FOR LIGHTING CONTROL.
- SWITCHES TO BE MOUNTED VERTICALLY; ONE-WAY SWITCHES SHALL HAVE "ON" POSITION UP. MOUNT AT 48" AFF TO BOTTOM OF SWITCH BOX (BOX BOTTOM AT TOP OF SIXTH CMU COURSE).



2 CEILING PLAN - ELECTRICAL

Scale: 1/8" = 1'-0"

Order Plans @

WWW.AEDLINE.com

PROJECT NUMBER: 20190224.01 PROJECT NAME: PEBBLEBROOK HS B007 - FIELDHOUSE
SHEET NUMBER: EF1.01 - FIELDHOUSE - ELECTRICAL
D:\Revit Projects\1810370_Pebblebrook B007_Fieldhouse_MEP_r19_Central_DuvV.rvt
10/31/2019 12:06:06 PM

JSE Jordan & Skala Engineers
4275 Shackleford Road, Suite 200 • Norcross, GA 30093
p. 770.447.8547 • f. 770.448.0262
Project Number: 1810370 Drawn By: DV Checked By: WRB

PEBBLEBROOK HS B007 - FIELDHOUSE
DOE Facility Code 4066
FTE = 2787
IU = 143
991 OLD ALABAMA ROAD
MABLETON, GA 30126
COBB COUNTY SCHOOL DISTRICT
FIELDHOUSE - ELECTRICAL

TW	20190224.01
Principal Charge	
DWG	10/25/19
Project Manager	
WRB	
Project Architect	
DV	
Staff Architect	
	EF1.01