



COOPER CARRY
THE CENTER FOR CONNECTIVE ARCHITECTURE

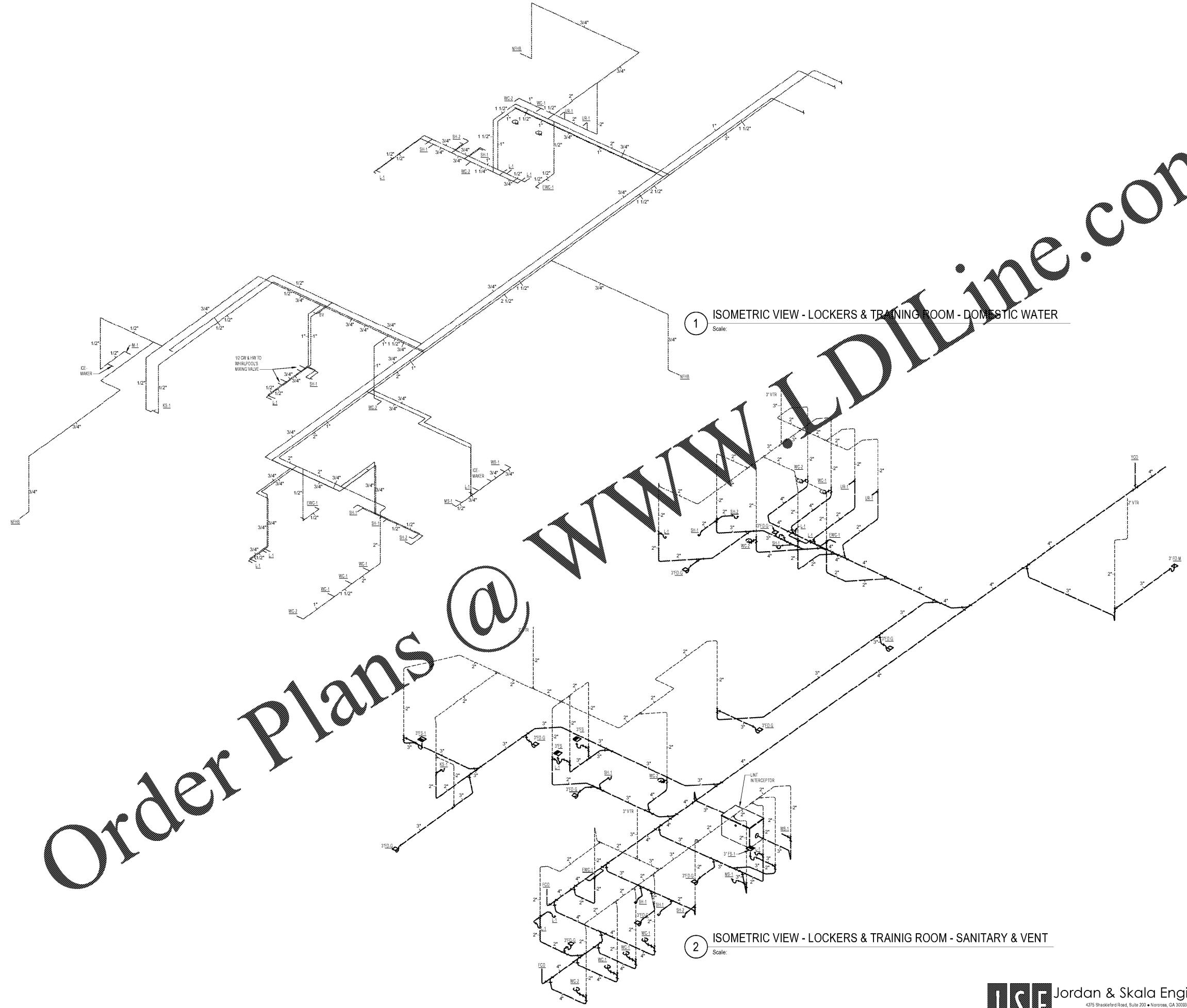
191 Peachtree Street NE
Suite 2400
Atlanta, GA 30303-1770
(404) 237-2000
coopercarry.com

©2019 COOPER CARRY



ISSUANCES		
No.	Drawing Issue Description	Date
1	ISSUED FOR BID	11/04/19

Order Plans @ www.DIline.com



1 ISOMETRIC VIEW - LOCKERS & TRAINING ROOM - DOMESTIC WATER
Scale:

2 ISOMETRIC VIEW - LOCKERS & TRAINING ROOM - SANITARY & VENT
Scale:

PROJECT NUMBER: 20190224.01 PROJECT NAME: PEBBLEBROOK HS B007 - FIELDHOUSE
SHEET NUMBER: PF2.03 - ISOMETRIC VIEWS - PLUMBING
D:\Revit Projects\1810370_Pebblebrook B007_Fieldhouse_MEP_19_Central_EsterA.rvt
10/31/2019 10:28:41 AM

PEBBLEBROOK HS B007 -
FIELDHOUSE
DOE Facility Code 4066
FTE = 2787
IU = 143
991 OLD ALABAMA ROAD
MABLETON, GA 30126
COBB COUNTY SCHOOL DISTRICT
ISOMETRIC VIEWS -
PLUMBING

JSE Jordan & Skala Engineers
4275 Shalkeford Road, Suite 200 • Norcross, GA 30093
p 770 447 5547 • f 770 448 0262
Project Number: 1810370 Drawn By: EIA Checked By: JMW

DHS 20190224.01
Principal Charge
DWG 11/04/19
Project Manager
JMW
Project Architect
EIA
Staff Architect
PF2.03
ISSUED FOR CONSTRUCTION