



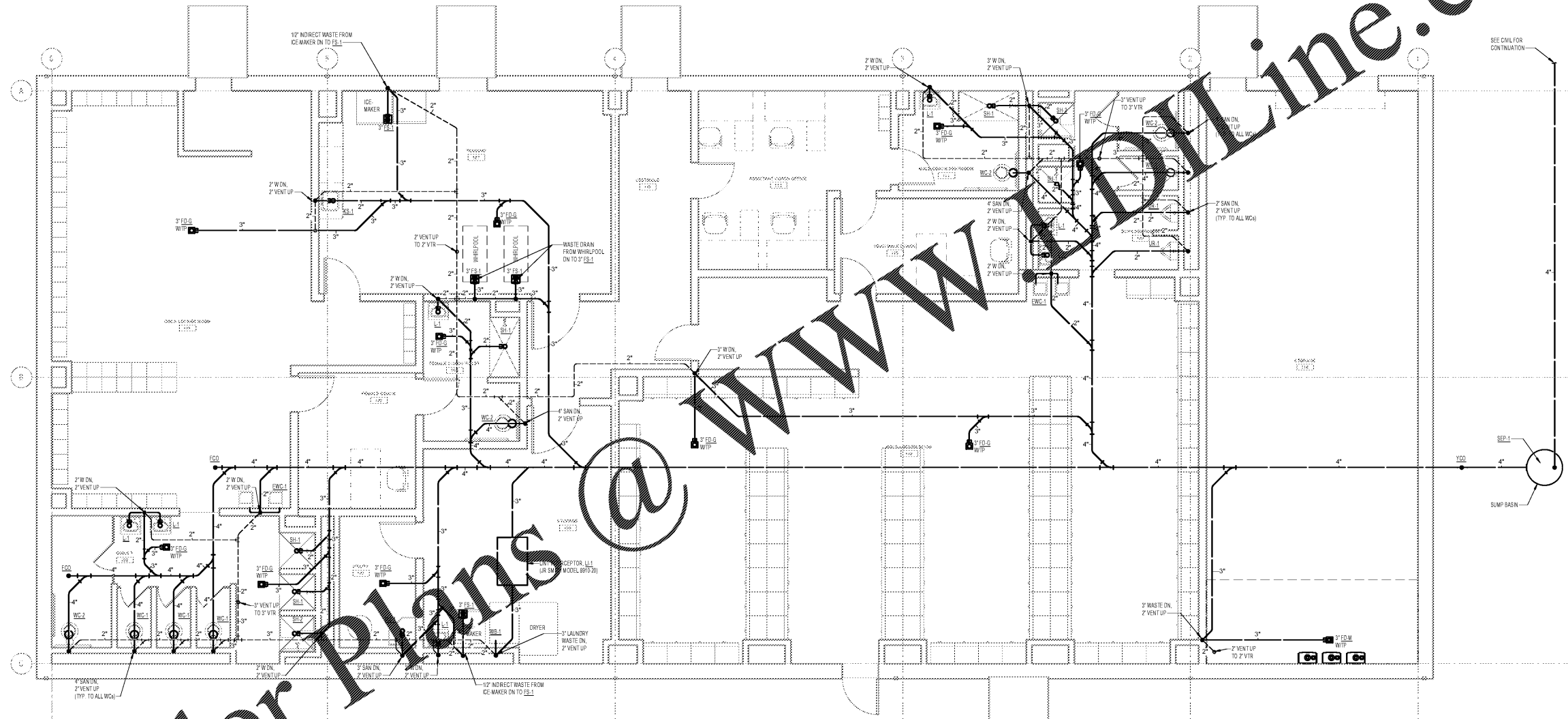
**COOPER CARRY**  
THE CENTER FOR CONNECTIVE ARCHITECTURE

191 Peachtree Street NE  
Suite 2400  
Atlanta, GA 30303-1770  
(404) 237-2000  
coopercarry.com

00219 COOPER CARRY



ISSUANCES		
No.	Drawing Issue Description	Date
1	ISSUED FOR BID	11/04/19



Order Plans @ [www.dolline.com](http://www.dolline.com)

**1 FLOOR PLAN - FIELDHOUSE - SANITARY & VENT**  
Scale: 1/4" = 1'-0"

PROJECT NUMBER: 20190224.01 PROJECT NAME: PEBBLEBROOK HS B007 - FIELDHOUSE  
SHEET NUMBER: PF2.02 - ENLARGED PLANS - PLUMBING  
DIR/Revit Projects/1810370\_Pebblebrook B007\_Fieldhouse\_MEP\_19\_Central\_EsterA.rvt  
10/31/2019 10:28:09 AM

**PEBBLEBROOK HS B007 -  
FIELDHOUSE**  
DOE Facility Code 4066  
FTE = 2787  
IU = 143  
991 OLD ALABAMA ROAD  
MABLETON, GA 30126  
COBB COUNTY SCHOOL DISTRICT  
ENLARGED PLANS  
PLUMBING

DHS	20190224.01
Principal Charge	Project No.
DWG	11/04/19
Project Manager	Date
JMW	
Project Architect	
EIA	
Staff Architect	

**PF2.02**

**JSE** Jordan & Skala Engineers  
4275 Shalkeford Road, Suite 200 • Norcross, GA 30093  
p 770 447 5547 • f 770 448 0262  
Project Number: 1810370 Drawn By: EIA Checked By: JMW

ISSUED FOR CONSTRUCTION