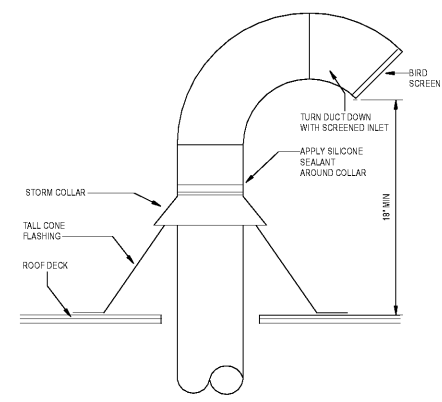


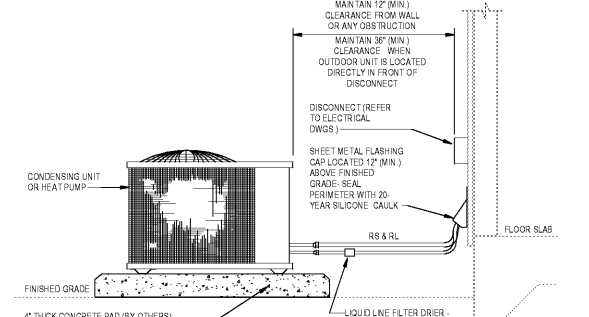


ISSUANCES		
No.	Drawing Issue Description	Date
1	ISSUED FOR BD	11/04/19



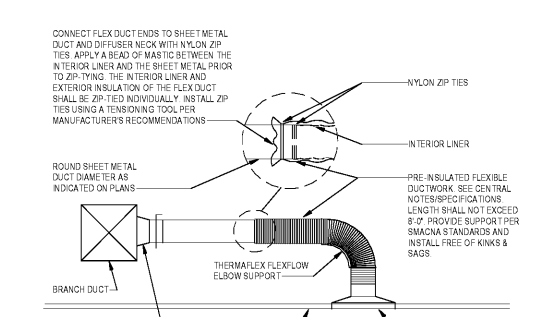
- NOTES:
1. ALL EXPOSED METAL SHALL HAVE A PINT GRIP FINISH FOR FIELD APPLIED PAINTING (PAINTING BY OTHERS)
 2. FOR SLOPED ROOFS USE ADJUSTABLE FLASHING IN LIEU OF TALL CONE FLASHING

DRYER VENT GOOSENECK THRU ROOF DETAIL
SCALE: NTS



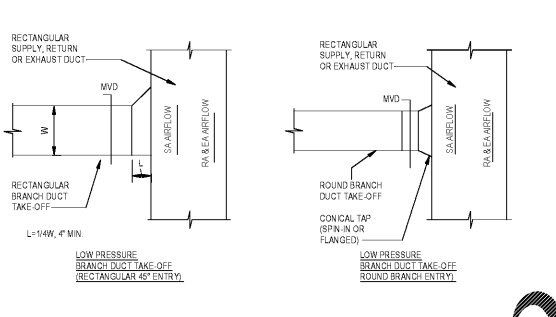
- NOTES:
1. MAINTAIN 30"x30" CLEARANCE ON SERVICE SIDE OF ALL OUTDOOR UNITS OR MINIMUM AS RECOMMENDED BY THE MANUFACTURER
 2. IF REQUIRED BY LOCAL CODE, SECURE UNIT TO CONCRETE PAD PER MANUFACTURER'S RECOMMENDATIONS
 3. SEAL SPACE BETWEEN PIPING AND FLASHING CAP WEATHER TIGHT WITH EXPANDING FOAM INSULATION
 4. ALL REFRIGERANT LINE SET PENETRATIONS SHALL BE LOCATED AT THE SAME ELEVATION AROUND THE BUILDING
 5. ALL ELECTRICAL SAFETY DISCONNECTS SHALL BE LOCATED AT THE SAME ELEVATION AROUND THE BUILDING (COORDINATE WITH ELECTRICAL CONTRACTOR)
 6. AS AN ALTERNATE TO THE SHEET METAL FLASHING CAP, PROVIDE THE TITAN OUTLET AS MANUFACTURED BY AIREX

GRADE MOUNTED OUTDOOR UNIT DETAIL
SCALE: NTS



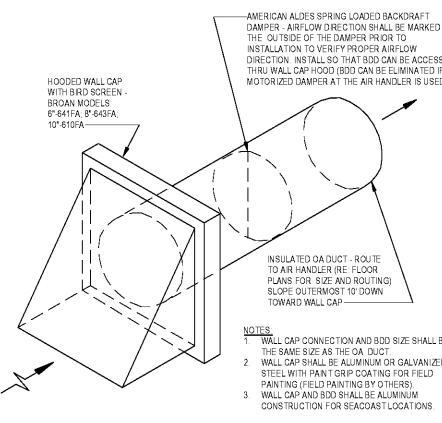
- NOTES:
1. TAPES AND MASTICS USED TO SEAL FIBROUS GLASS DUCTWORK SHALL BE LISTED AND LABELED IN ACCORDANCE WITH UL 181A AND SHALL BE MARKED "181 A" FOR PRESSURE SENSITIVE TAPE, "181 A M" FOR MASTIC OR "181 A H" FOR HEAT SENSITIVE TAPE
 2. TAPES AND MASTICS USED TO SEAL METALLIC AND FLEXIBLE AIR DUCTS AND FLEXIBLE AIR CONNECTORS SHALL COMPLY WITH UL 181B AND SHALL BE MARKED "181 B-FX" FOR PRESSURE SENSITIVE TAPE OR "181 B-M" FOR MASTIC
 3. MECHANICAL FASTENERS FOR USE WITH FLEXIBLE NONMETALLIC AIR DUCTS SHALL COMPLY WITH UL 181B AND SHALL BE MARKED "181 B-C"

COMMERCIAL FLEXIBLE DUCT TAKE-OFF DETAIL
SCALE: NTS



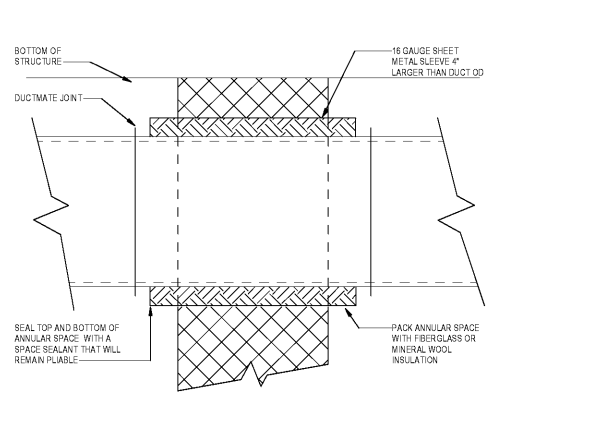
- NOTE:
1. ACCEPTABLE ALTERNATIVES ARE CONICAL TAP AND SADDLE TAPS PER SMACNA HVAC DUCT CONSTRUCTION STANDARDS

BRANCH DUCT TAKE-OFF DETAIL
SCALE: NTS

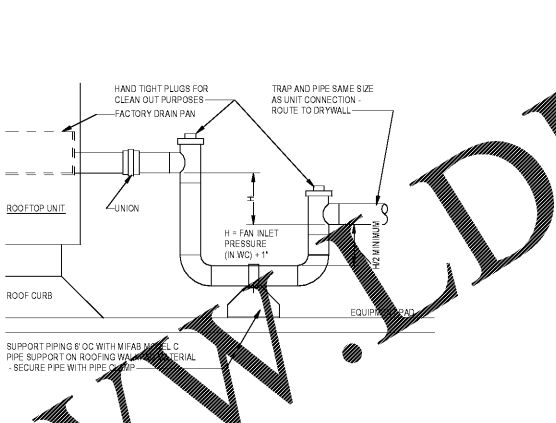


- NOTES:
1. WALL CAP CONNECTION AND BDD SIZE SHALL BE THE SAME SIZE AS THE OA DUCT
 2. WALL CAP SHALL BE ALUMINUM OR GALVANIZED STEEL WITH PAINT GRIP COATING FOR FIELD PAINTING (FIELD PAINTING BY OTHERS)
 3. WALL CAP AND BDD SHALL BE ALUMINUM CONSTRUCTION FOR SEACOAST LOCATIONS

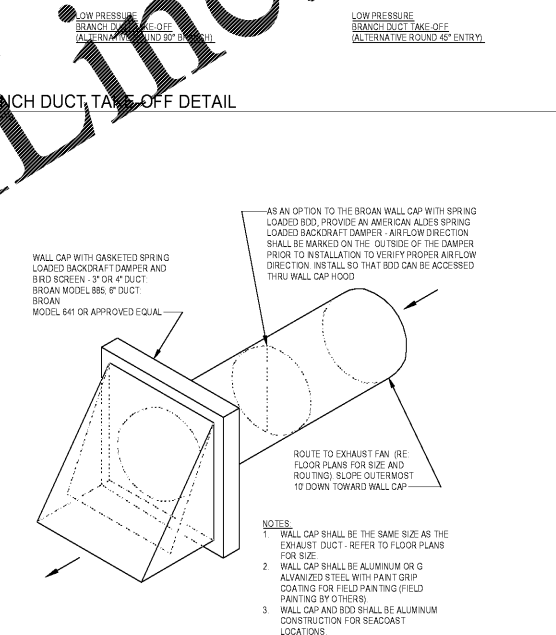
OUTSIDE AIR INTAKE WALL CAP DETAIL
SCALE: NTS



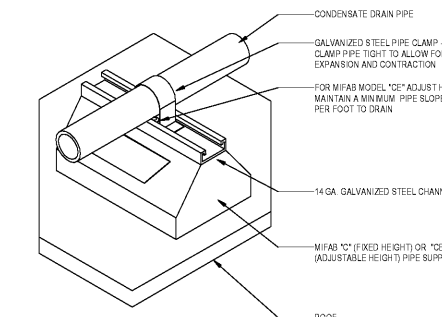
DUCTWORK THRU WALL PENETRATION DETAIL (NON-RATED)
SCALE: NTS



R-15 CONDENSATE DRAIN TRAP DETAIL
SCALE: NTS

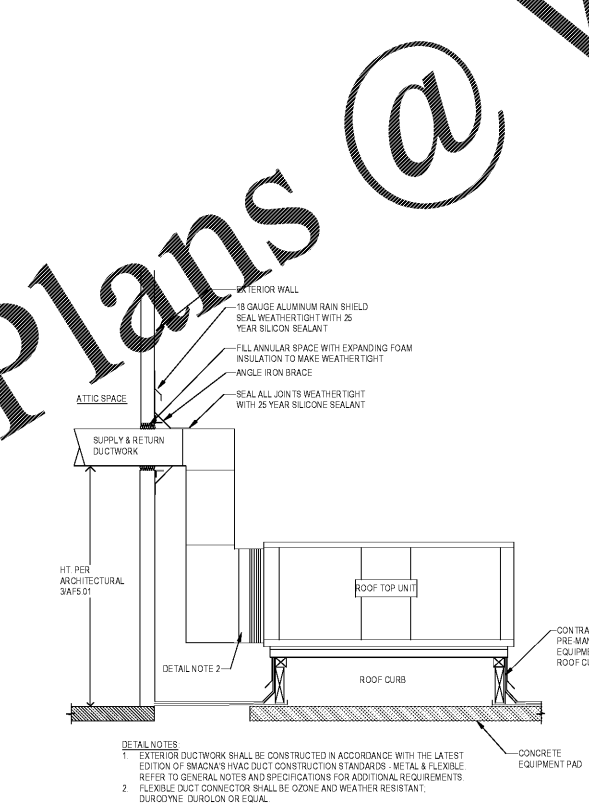


BATH EXHAUST WALL CAP DETAIL
SCALE: NTS



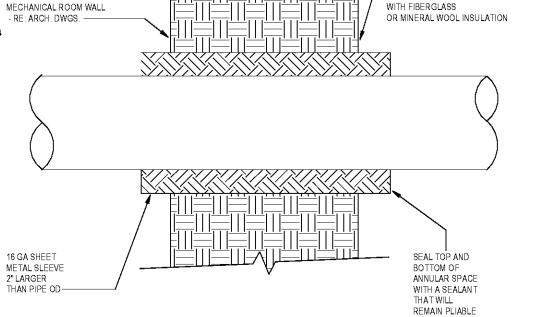
- NOTES:
1. SUPPORTS SHALL BE SPACED 6' ON CENTER (BASE ON SCHEDULE 40 PVC)
 2. PLACE WALKPAD MATERIAL SHEETS BENEATH SUPPORT (MIN. 1" LARGER THAN SUPPORT ALL AROUND)

CONDENSATE DRAIN PIPING SUPPORT DETAIL
SCALE: NTS

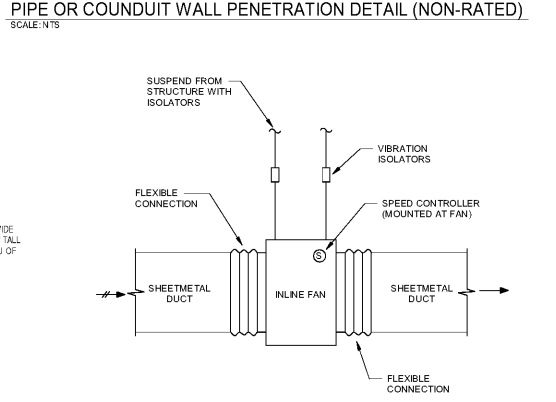


- DETAIL NOTES:
1. EXTERIOR DUCTWORK SHALL BE CONSTRUCTED IN ACCORDANCE WITH THE LATEST EDITION OF SMACNA'S HVAC DUCT CONSTRUCTION STANDARDS - METAL & FLEXIBLE. REFER TO GENERAL NOTES AND SPECIFICATIONS FOR ADDITIONAL REQUIREMENTS
 2. FLEXIBLE DUCT CONNECTOR SHALL BE OZONE AND WEATHER RESISTANT, DURODYNE DUROLON OR EQUAL

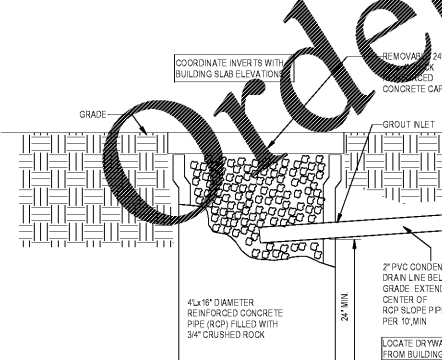
EXTERIOR WALL DUCT PENETRATION DETAIL
SCALE: NTS



PIPE OR CONDUIT WALL PENETRATION DETAIL (NON-RATED)
SCALE: NTS



SUSPENDED IN-LINE FAN DETAIL
SCALE: NTS



CONDENSATE DRYWALL
SCALE: NTS

Order Plans @ WWW.LDILLINE.COM

PROJECT NUMBER: 20190224.01 PROJECT NAME: PEBBLEBROOK HS B007 - FIELDHOUSE
SHEET NUMBER: 181 OF 181 DRAWING TITLE: B007_Fieldhouse_MEP_r19_Revant.rvt
10/30/2019 4:29:55 PM

PEBBLEBROOK HS B007 -
FIELDHOUSE
DOE Facility Code 4066
FTE = 2787
IU = 143
991 OLD ALABAMA ROAD
MABLETON, GA 30126
COBB COUNTY SCHOOL DISTRICT
DETAILS - MECHANICAL