



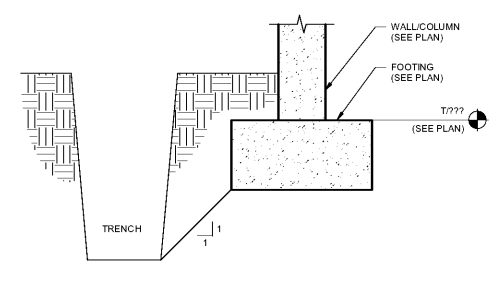
**COOPER CARRY**  
THE CENTER FOR CONNECTIVE ARCHITECTURE

191 Peachtree Street NE  
Suite 2400  
Atlanta, GA 30303-1770  
(404) 237-2000  
coopercarry.com

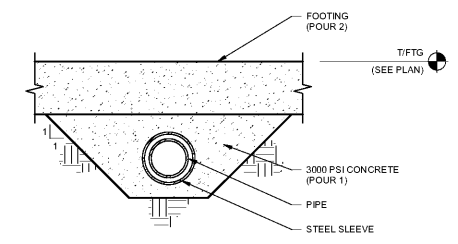
©2019 COOPER CARRY



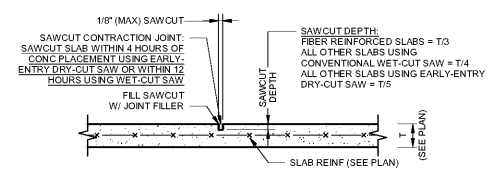
ISSUANCES		
No.	Drawing Issue Description	Date
1	ISSUED FOR B/D	11/04/19



**TYPICAL FOOTING ADJACENT TO TRENCH - SECTION**  
SCALE: 1" = 1'-0"  
SF3.02

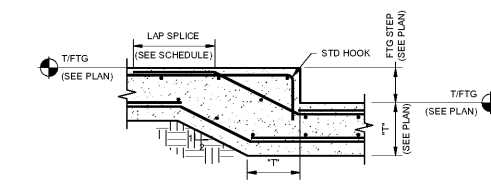


**TYPICAL PIPE UNDER FOOTING - SECTION**  
SCALE: 3/4" = 1'-0"  
SF3.02

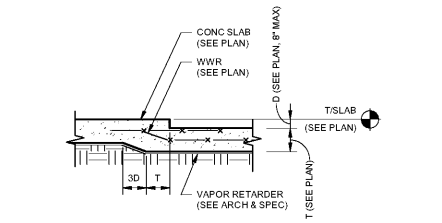


**SAWCUT CONTRACTION JOINT**  
NOTE:  
1. APPLY A SPRAY-ON BOND BREAKER TO THE FIRST POUR PRIOR TO PLACING THE SECOND POUR. APPLY A SPRAY-ON BOND BREAKER TO THE FIRST POUR PRIOR TO PLACING THE SECOND POUR.

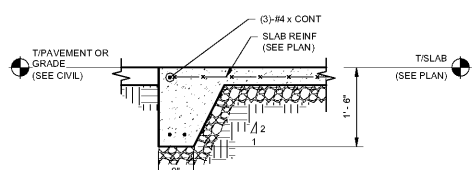
**TYPICAL CONSTRUCTION/CONTRACTION JOINT DETAILS - SECTION**  
SCALE: 1" = 1'-0"  
SF3.02



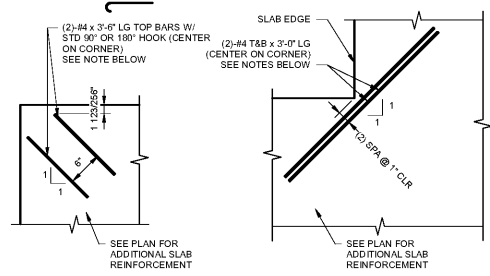
**TYPICAL FOOTING STEP - SECTION**  
SCALE: 3/4" = 1'-0"  
SF3.02



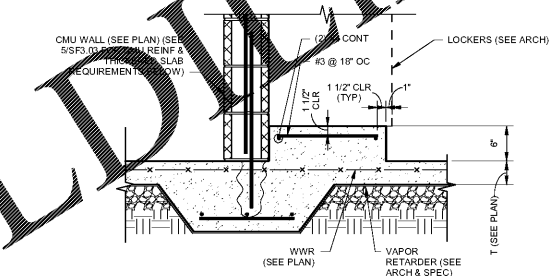
**TYPICAL DEPRESSED SLAB - SECTION**  
SCALE: 1" = 1'-0"  
SF3.02



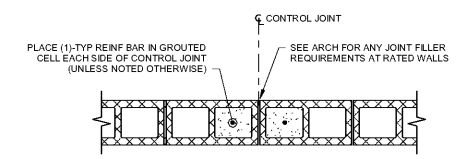
**TURNDOWN SLAB EDGE - SECTION**  
SCALE: 3/4" = 1'-0"  
SF3.02



**TYPICAL ADDITIONAL SLAB CORNER REINFORCING - PLAN**  
SCALE: 1" = 1'-0"  
SF3.02

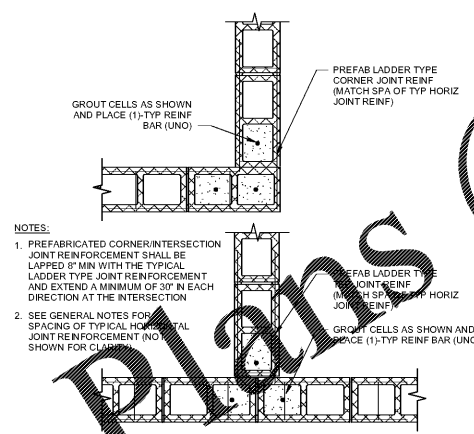


**TYPICAL LOCKER RAISED SLAB DETAIL**  
SCALE: 1" = 1'-0"  
SF3.02



- NOTES:**
- CONTROL JOINTS SHALL BE LOCATED PER ARCHITECTURAL DRAWINGS AND SHALL MATCH VENEER CONTROL JOINTS WHERE APPLICABLE
  - CONTROL JOINTS SHALL NOT BE LOCATED THROUGH BEAMS OR LINTELS, THEIR BEARING DISTANCE, OR THE REQUIRED JAMB ON EITHER SIDE OF THE OPENING
  - CONTROL JOINTS SHALL NOT BE LOCATED WITHIN A WALL DESIGNATED ON THE STRUCTURAL PLANS AS A SHEAR WALL WITHOUT WRITTEN APPROVAL FROM THE STRUCTURAL ENGINEER OF RECORD
  - HORIZONTAL JOINT REINFORCEMENT TO STOP AT EACH SIDE OF CONTROL JOINT. TYPICAL HORIZONTAL JOINT REINFORCEMENT NOT SHOWN FOR CLARITY
  - DO NOT CUT CONTINUOUS BOND BEAMS OR BOND BEAM REINFORCEMENT AT CONTROL JOINTS. PROVIDE APPEARANCE OF CONTROL JOINT IN BOND BEAM WHERE JOINT IS EXPOSED (SEE ARCH)
  - WHERE NOT EXPLICITLY NOTED OR SHOWN OTHERWISE, GC SHALL INSTALL CONTROL JOINTS AS FOLLOWS:
    - SPACING NOT TO EXCEED 25'-0" IN CONTINUOUS WALLS
    - LOCATED NOT CLOSER THAN 5'-0" AND NOT FURTHER THAN 12'-0" FROM WALL CORNERS
    - AT LOCATIONS WHERE WALL HEIGHT CHANGES
    - AT LOCATIONS WHERE WALL THICKNESS CHANGES

**TYPICAL CMU WALL CONTROL JOINT - PLAN**  
SCALE: 1" = 1'-0"  
SF3.02



**TYPICAL CMU WALL CORNER/INTERSECTION REINFORCEMENT - PLAN**  
SCALE: 1" = 1'-0"  
SF3.02

Order Plans @ WWW.LDWLine.com

PROJECT NUMBER: 20190224.01 PROJECT NAME: PEBBLEBROOK HS S5B007 - FIELDHOUSE SHEET NUMBER: 10-FOUNDATION/STRUCTURE/SECTION/DETAILS/PEBBLEBROOK HS Addition-Fieldhouse-R19-STRUCT\_asellers.nt 10/31/2019 12:17:58 PM

**PES STRUCTURAL ENGINEERS**

ADDRESS: 1852 Century Plaza NE, Suite 2011, Atlanta, Georgia 30345  
PHONE: 770-457-5223 FAX: 770-457-9893 WEB: www.pesengineers.com  
PES PROJECT NUMBER: 0218128

**PEBBLEBROOK HS S5B007 - FIELDHOUSE**  
DOE Facility Code 7010  
FTE = 2787  
IU = 143  
991 OLD ALABAMA ROAD  
MABLETON, GA 30126  
COBB COUNTY SCHOOL DISTRICT

**FOUNDATION SECTIONS & DETAILS**

Designer: 20190224.01  
Project No.:  
Approver: 06/05/17  
Issue Manager: Date:  
Checker:  
Project Address:  
Author: SF3.02  
Staff Assigned:

ISSUED FOR CONSTRUCTION