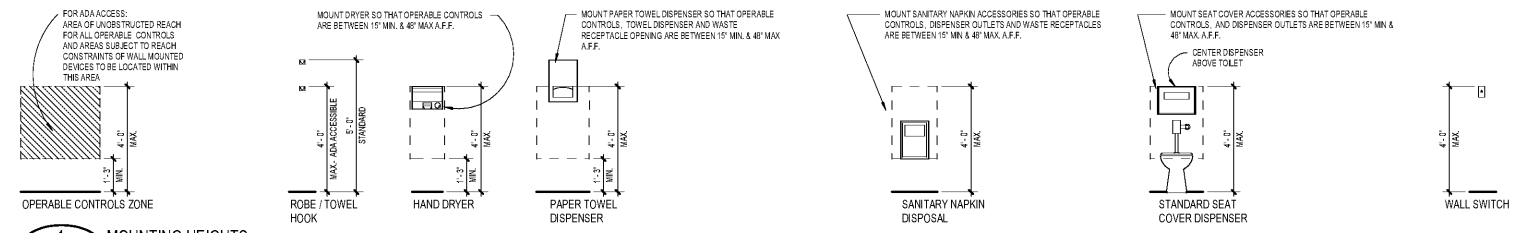
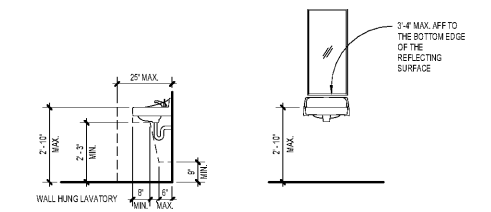




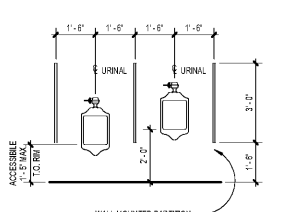
ISSUANCES		
No.	Drawing Issue Description	Date
1	ISSUED FOR BID	11/04/19



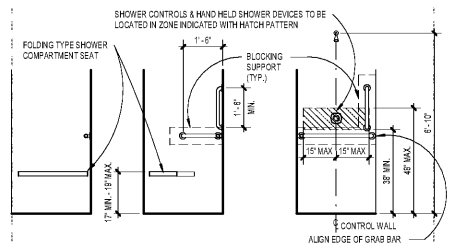
1 MOUNTING HEIGHTS  
SCALE: 3/8" = 1'-0"



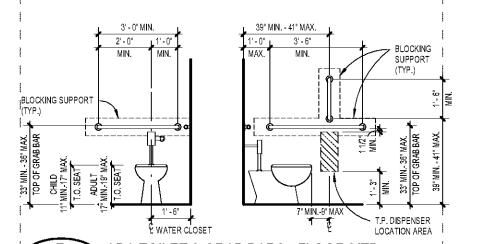
3 ADA SINK  
SCALE: 3/8" = 1'-0"



4 URINAL / URINAL SCREEN  
SCALE: 3/8" = 1'-0"



5 SHOWER / ADA SHOWER  
SCALE: 3/8" = 1'-0"



7 ADA TOILET & GRAB BARS - FLOOR MTD.  
SCALE: 3/8" = 1'-0"

Order Plans @ www.LDILine.com

PROJECT NUMBER: 20190224.01 PROJECT NAME: PEBBLEBROOK HS S5B007 - FIELDHOUSE  
SHEET NUMBER: AF9.20 - PLUMBING FIXTURES  
M:\2018\20180008\7 drawings\4-7-1 rev\Users\20180008\_Pebblebrook B007\_Fieldhouse\_2019\_Callahan\01947.rvt  
11/1/2019 10:42:57 AM

PEBBLEBROOK HS S5B007 -  
FIELDHOUSE  
DOE Facility Code 7010  
FTE = 2787  
IU = 143  
991 OLD ALABAMA ROAD  
MABLETON, GA 30126  
COBB COUNTY SCHOOL DISTRICT  
PLUMBING FIXTURES

ROBERT JUST	20190224.01
Principal/Designer	Project No.
SOPHIA TARKHAN	11.04.19
Project Manager	Date
MARC NUNES	
Project Architect	
WILLIAM CALLAHAN	
Staff Architect	

AF9.20